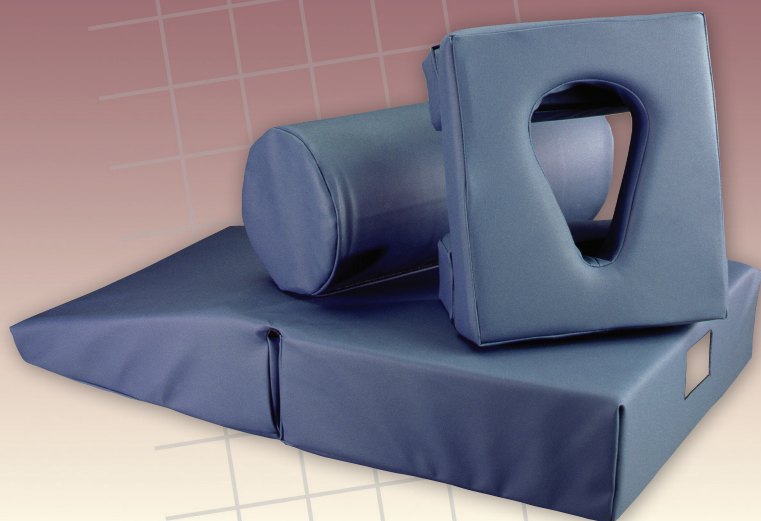


The M.A.T.™

The Medical And Therapy Body Positioning System



- Provides long-term face down comfort during and after treatment.
- Face rest has teardrop-shaped face cradle and large breathing channel.
- Pelvic tilt body section provides passive traction.

Comfortable Face Down Treatment

Now you can provide face down comfort superior to that of a traditional flat table. The M.A.T. is designed to be used for prolonged face-down time during and after treatment. Thanks to its special features, the M.A.T. provides complete muscular-skeletal alignment. The pelvic tilt feature reduces spinal compression in the lower back. Uniquely shaped teardrop opening face rest ensures proper cervical posture and support in addition to a large breathing channel. Bolster section reduces stress on the hips, knees and ankles.

High Quality Material

Our cushions are made from precision-cut, high-quality foam. The soft vinyl cover provides a long-lasting, easy-to-clean surface. The tapered end and wide surface ensures proper positioning and provides reassuring comfort.

Versatility

The M.A.T. is designed to be used when a patient is lying on his or her stomach or back. Simply rearrange the pieces to accommodate either position. The M.A.T. can be used with any treatment table system, and folded for easy storage or carrying.

Specifications

Weight

- 5 lbs.

Color

- Black
- Blue
- Gray
- Natural

Material Content

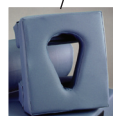
- Precision-cut Polyurethane Foam
- Vinyl or Cloth Cover

Care of Product

- Wipe vinyl surface to clean.
- Remove cloth cover to machine wash.

Product Number

- #5600 MAT Cloth Cover, Natural
- #5601 MAT Vinyl Cover, Black, Blue, Gray
- #5602 Face Cradle Only, Cloth Natural



Teardrop shape face cradle and large breathing channel



Pelvic tilt body section accommodates all positions



American Manufacturing Co. 
Core Products
 INTERNATIONAL, INC.
Making Your Life More Comfortable.

800-365-3047 • 715-294-2050
www.coreproducts.com

The M.A.T.™

The Medical And Therapy Body Positioning System



- Provides long term comfort for at-home massage
- Provides proper muscular-skeletal support while laying prone.
- Soft cotton cover can be removed for washing.

Long-Term Face Down Comfort After Treatment

Now you can comply with doctor's orders to stay face down after treatments such as macula hole, vitrectomy, detached retina, back surgery, severe burns, or sciatic nerve therapy. Same great features as the professional M.A.T. in a cloth cover. Soft, breathable cover is removable for washing. The M.A.T. can be placed on any bed, sofa or on a sheet on the floor. Comfortable while patient is awake and sleeping.

At Home Massage

The M.A.T. can be used for at home massage by placing it on a sheet on the floor, on a bed, or on a sofa. Now you can enjoy a relaxing, healing massage in your home without having to twist and strain your neck.

High Quality Material

Our cushions are made from precision-cut, high-quality foam. The soft cloth cover provides a long-lasting, easy-to-clean surface. The tapered end and wide surface ensures proper positioning and provides reassuring comfort during recovery.

Versatility

The M.A.T. is designed to be used when a patient is lying face down for an extended period of time. The large breathing channel is large enough for a patient to eat through, read a book, and other activities during their recovery time. The M.A.T. folds up for easy carrying and storage.



Specifications

Weight

- 5 lbs.

Color

- Black
- Blue
- Gray
- Natural

Material Content

- Precision-cut Polyurethane Foam
- Vinyl or Cloth Cover

Care of Product

- Wipe vinyl surface to clean.
- Remove cloth cover to machine wash.

Product Number

- #5600 MAT Cloth Cover, Natural
- #5601 MAT Vinyl Cover, Black, Blue, Gray
- #5602 Face Cradle Only, Cloth Natural



American Manufacturing Co. 
Core Products
 INTERNATIONAL, INC.

Making Your Life More Comfortable.

800-365-3047 • 715-294-2050

www.coreproducts.com