

**SPEAKMAN COMPANY**  
**S-3231 Installation, Maintenance & Operation Instructions**  
**COMMANDER® HEALTHCARE**  
**BEDPAN WASHER**

**DESCRIPTION**

Speakman chrome plated brass bedpan washer combination. Wall mounted double pedal self-closing mixing valve. Renewable operating units. ½” NPTF inlet. ½” NPTF outlet. Elevated vacuum breaker. Supply ell with ½” NPTF inlet and wall flange. 69” white vinyl reinforced hose. Insulated handle, spray outlet and wall hook.

**SPECIFICATIONS**

VALVE SUPPLIES: ½” NPT FEMALE.  
SHIPPING WEIGHT: XXX LBS.

**OPTIONS**

◇ IVB – Inline Vacuum Breaker	◇ SCV – Self Closing Valve on Handle with Elevated Vacuum Breaker
◇ USS- Union Separate Stops	◇ UAS- Union Angle Stops

**INSTALLATION**

NOTE: Reference the rough-in for supply pipe installation. Use pipe sealant on all pipe threads. Finished wall must be supported where mixing valve mounts.  
Install the rough (behind the wall) piping and valve mounting support. Complete the finished wall construction. For ease of installation, it is recommended that union connections (not supplied) be installed on the inlet supply piping. With unions installed, connect mixing valve to the supply lines. Hand tighten coupling nuts of unions. Mark the finished wall for the mixing valve mounting screws. Remove mixing valve from the supply lines. Drill necessary holes for mounting screws. Reconnect valve to supply lines and wrench tighten. Attach valve to wall using mounting screws (not provided). Connect outlet piping to the mixing valve. With the necessary openings in the finished wall, assemble the supply ell, vacuum breaker and spray hose assembly to the rough piping. (See separate IMO and roughing-in sheets for detailed installation instructions on the supply ell, vacuum breaker, and spray hose assembly.) Once the installation has been completed, turn water supplies on and check all connections for leaks.

**OPERATION**

Holding the spray hose assembly, simply press the foot pedal(s) to operate the bedpan washer.

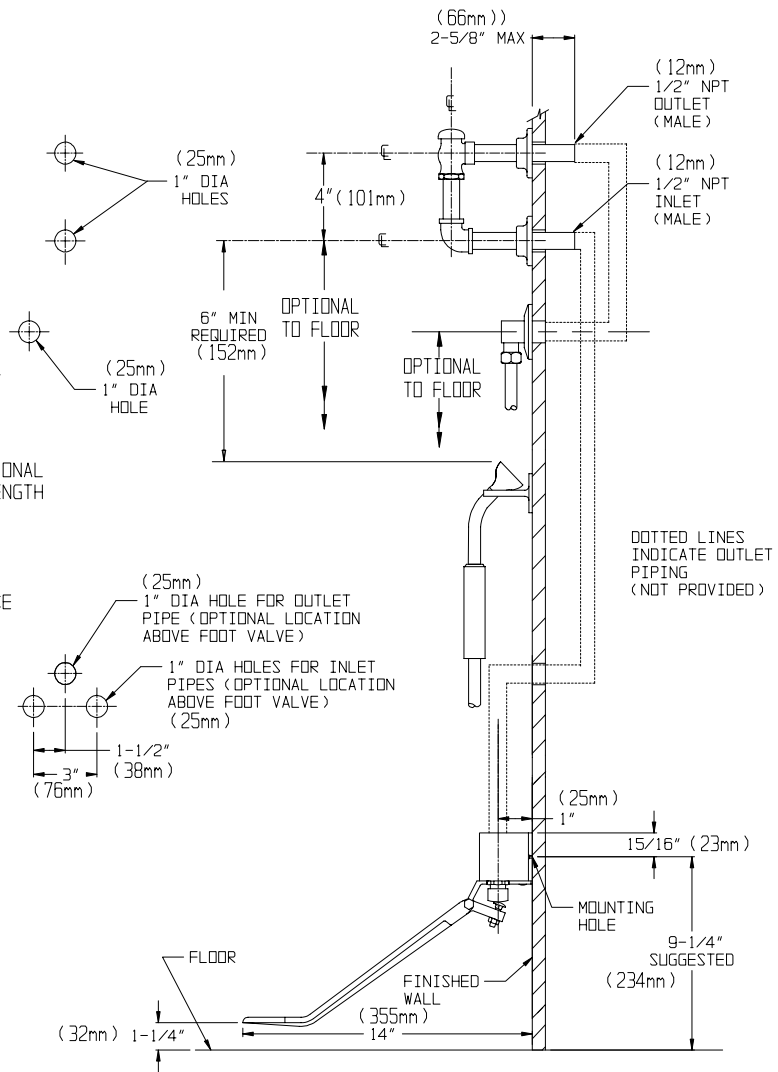
**MAINTENANCE** (CARE and CLEANING)

Periodically remove spray face and clean out any clogged holes. The gleaming finish on your SPEAKMAN COMMANDER HEALTHCARE bedpan washer can be cleaned by using mild soap and warm water. Dry immediately with a soft, clean cloth for best results.

**ROUGH-IN MEASUREMENTS**  
(SEE FOLLOWING PAGE)

NOTE:

1. INLETS & OUTLETS ARE 1/2" NPT FEMALE UNLESS OTHERWISE SPECIFIED.
2. LOCATION OF WALL HOOK IS OPTIONAL BUT RESTRICTED BY 69" HOSE LENGTH RUNNING FROM SUPPLY ELL TO INSULATED HANDLE.
3. ALL DIMENSIONS ARE IN INCHES (MILLIMETERS) UNLESS OTHERWISE SPECIFIED AND ARE SUBJECT TO CHANGE WITHOUT NOTICE.
4. SEE S-3219 IMD SHEET FOR COMPLETE FOOT PEDAL VALVE ROUGH-IN DETAILS.



**REPAIR / REPLACEMENT PARTS**

<u>ITEM NUMBER</u>	<u>PART OR GROUP NUMBER</u>	<u>DESCRIPTION</u>
1	G63-0055	SPRAY HOSE ASSEMBLY

**SPEAKMAN®**

PO Box 191 Wilmington, DE 19899

Phone: 800-537-2107 Fax: 800-977-2747

Visit us on the web at [www.speakmancompany.com](http://www.speakmancompany.com)