

SENTINEL MARK II®

SM-4050



Shower Combination

GENERAL SPECIFICATION

Versatile shower system includes Sentinel Mark II® concealed anti-scald balanced pressure valve and hand held spray combination. Chrome plated brass wall plate with metal index. Chrome plated brass lever handle. Independent center sleeve allows up to 1" of rough-in variation. Adjustable temperature limit stop. Brass body. Pressure balancing module. Ceramic temperature regulating module. Can be installed back-to-back. Roughing-in template. Four port valve with 1/2" inlets and outlets. Furnished with 1/2" pipe plug. Chrome plated brass supply ell with wall flange. 69" square lock stainless steel hose with rubber liner. Swivel connector. In-line vacuum breaker. 30" chrome plated brass slide bar with mounting screws. VS-100-AF handshower with flow control device reduces flow to 2.5 gpm/9.46 lpm maximum, to exceed existing ASME A112.18.1/CSA B125.1 standard. Non-positive shut-off meets ICC/ANSI A117.1 SEC. 608.6 and ADAAG. Meets ASSE 1016, 1989 standard.

SM-4050

Anti-scald shower and bath with decorative index.

SM-4051

Anti-scald shower and bath with decorative index and Revere handle.

SM-4051



OPTIONS

SUFFIX	DESCRIPTION
--------	-------------

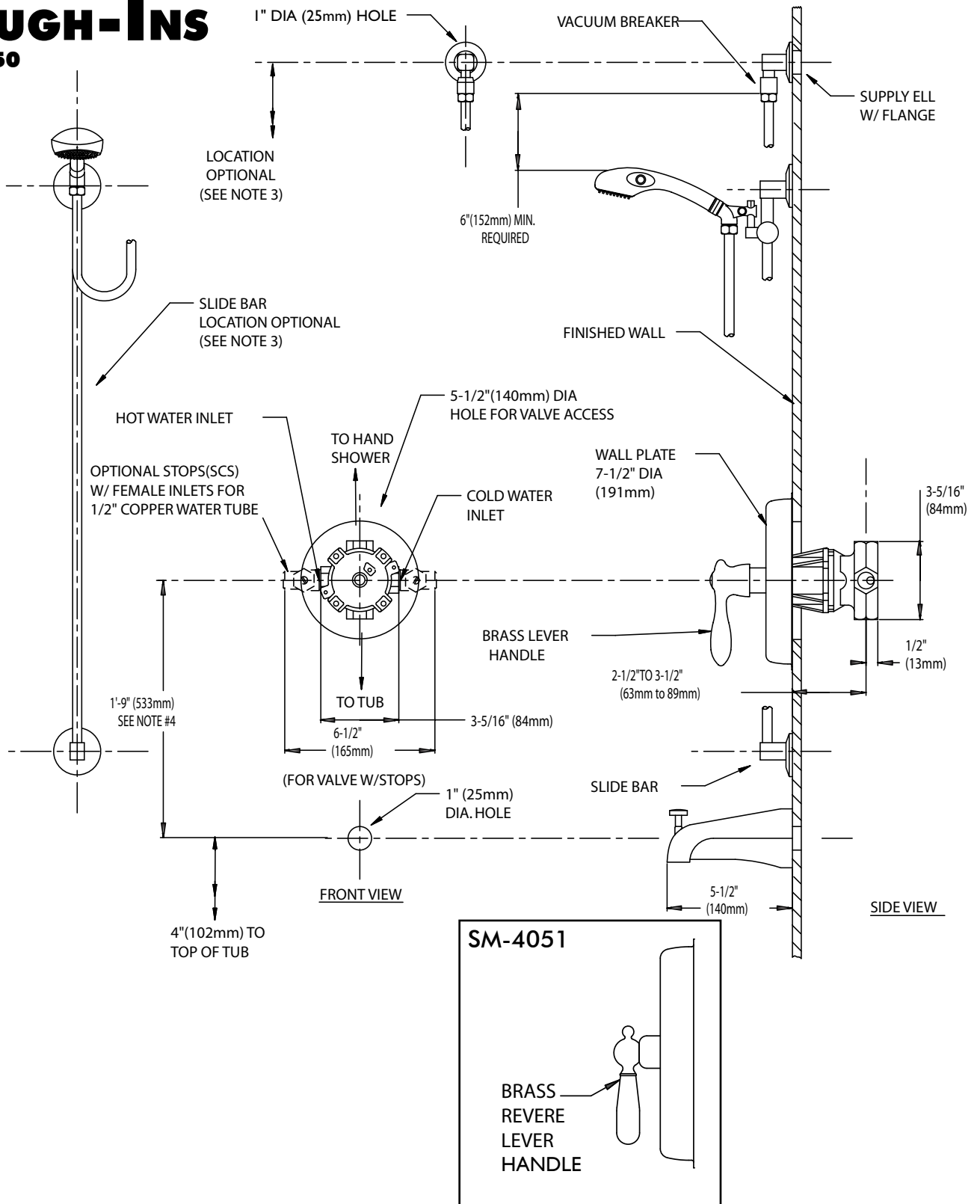
- | | |
|------------------------------|--|
| <input type="checkbox"/> PC | VS-100-PC handheld shower, chrome finish |
| <input type="checkbox"/> VH | 69" white vinyl hose |
| <input type="checkbox"/> SCS | Spring check stops |

This space for Architect/Engineer approval.



Rough-Ins

SM-4050



NOTE: Unless otherwise specified, all inlets and outlets are 1/2" NPTF. Locations of shower hangers are optional, but restricted by 69" hose length running from shower arm diverter connection to hand shower. Unless otherwise specified, all dimensions are in inches and are subject to change without notice. For ADA mounting locations consult ADAAG, ANSI A117.1, or state regulations.