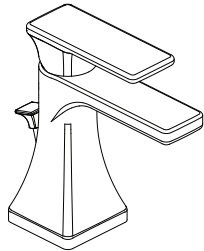
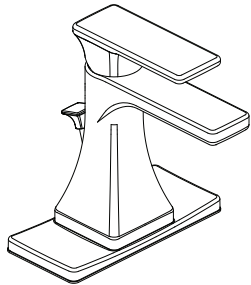


## Instructions for Models:

SB-1511  
SB-1511-BN  
SB-1511-PN



### Need Help?

For additional assistance or service call:

**SPEAKMAN** Company  
400 Anchor Mill Road  
New Castle, DE 19720

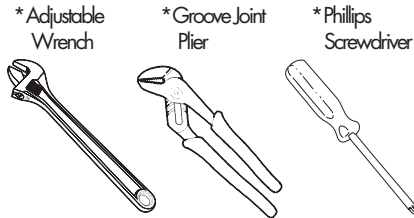
PHONE: 800-537-2107  
EMAIL: [customerservice@speakmancompany.com](mailto:customerservice@speakmancompany.com)  
WEB: [www.speakmancompany.com](http://www.speakmancompany.com)

92-SB-1511-R1

## What You Need To Know:

### Tools:

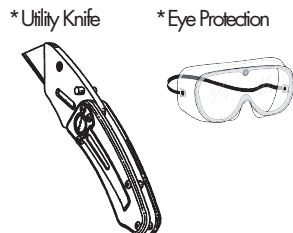
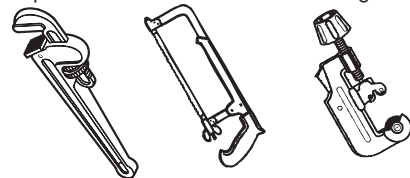
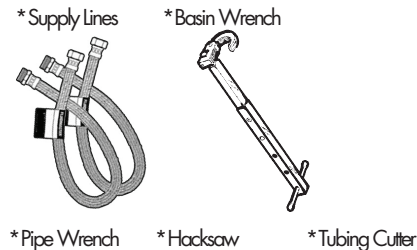
#### Required:



#### \*Teflon Tape



### Helpful:



## What You Need To Know: Important Notes:

Be sure to read instructions thoroughly before beginning installation. Do not overtighten any connections or damage may occur. This faucet has an operating range of 20-80 psi.

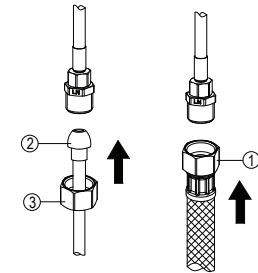
### Safety Tips:

Cover your drain to prevent loss of parts.  
Be sure to wear eye protection while cutting pipe.

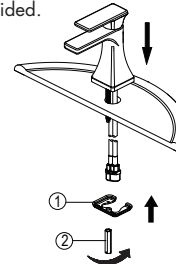
### Maintenance:

Your new Lavatory Faucet is designed for years of trouble-free performance. Keep it looking new by cleaning it periodically with a soft cloth. Avoid abrasive cleaners, steel wool and harsh chemicals as these will dull the finish and void your warranty.

- ② Make connections to water lines. Use 1/2" IPS faucet connections (1) or use the supplied coupling nuts (3) with 3/8" O.D. ball-nose risers (2). Use wrenches to tighten connections. Do not overtighten.



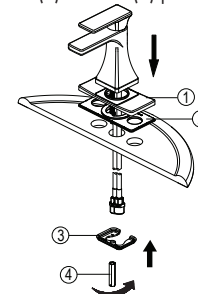
- ①A Shut off water supply. Remove old faucet. Clean sink surface in preparation for new faucet. No Deckplate Installation (optional). Place faucet through mounting holes in sink. Secure faucet to sink using washer (1) and nut (2) provided.



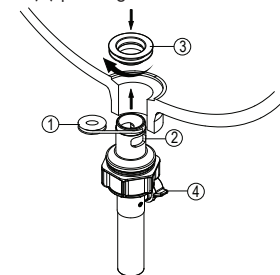
- ③ Remove flange (1) and rubber washer (2) from pop-up drain assembly.



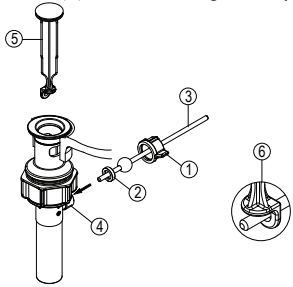
- ①B Deckplate Installation (optional). Place deckplate (1) and gasket (2) on bottom of new faucet. Place faucet through mounting holes in sink. Secure faucet to sink using washer (3) and nut (4) provided.



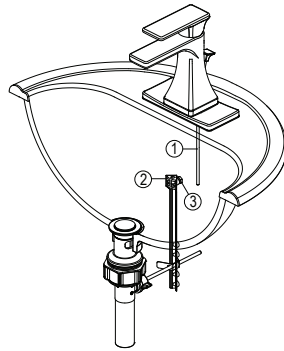
- ④ Add Teflon tape (1) to the drain body (2). Apply the provided gasket or plumber's putty to the underside of the flange (3). Insert the threaded end of the drain body up through the drain hole and attach flange to the body with the pivot (4) pointing to the rear of the sink.



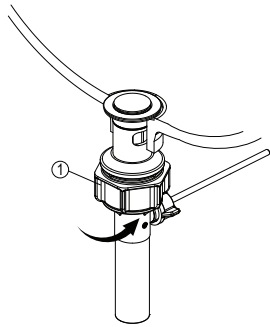
**5** Unscrew the nut (1) from the pop-up body.  
 Note: retain the seal (2) on the horizontal rod (3). Place the nut onto the horizontal rod and insert the rod and seal (2) into the pivot hole (4). Install stopper (5) as non-removable (6). Slide nut (1) on and hand tighten only.



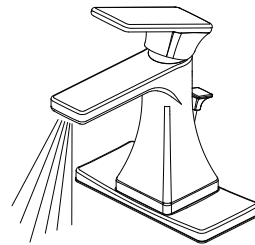
**8** Insert lift rod (1) into strap (2) and tighten screw (3).



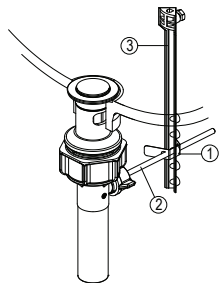
**6** Tighten nut (1) clockwise until the pop-up drain assembly is secure.



**9** **IMPORTANT:**  
 After installation is completed, turn on water supply and allow both hot and cold water to run for at least one minute each. While water is running, check for leaks.



**7** Place one end of spring clip (1) on the end of horizontal rod (2). Insert rod through hole in lift rod strap (3). Secure with spring clip (1).



**10** **NOTE:** Due to open trough design, the aeration/filtration has been added to the supply lines. If flow becomes restricted or pressure reduced, please proceed as follows:  
 Shut off water supply at angle stop and unscrew the hose from water supply lines. Remove screen filter (1) from hose (2) and clean/rinse off any debris. Reinstall (1) into (2) in original direction, reconnect supply lines and turn water on.

