

**Ella™ Single Handle Kitchen Faucet  
Models LK7720****FEATURES**

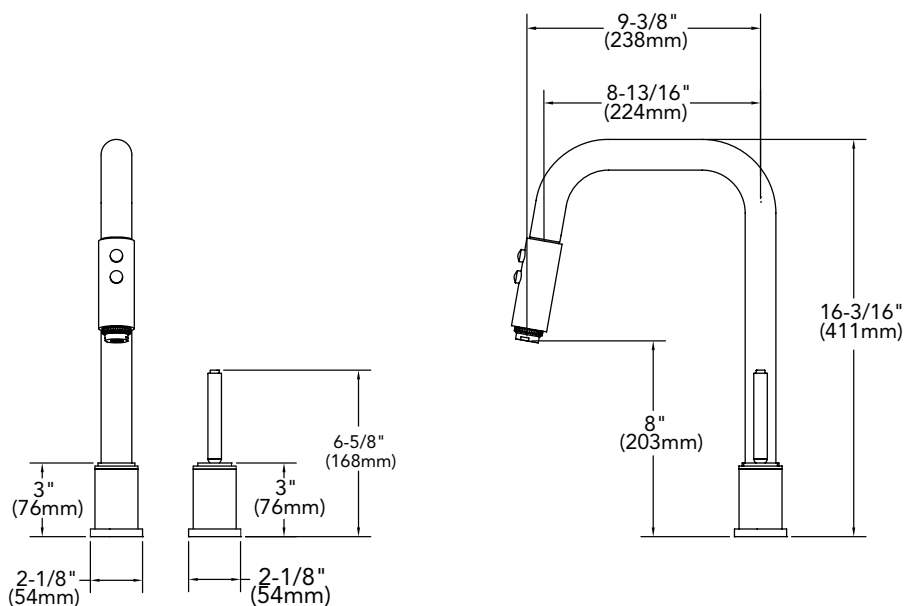
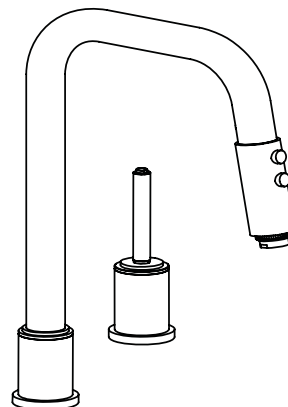
- Single-lever faucet
- Pull-down dual spray
  - Two 1-1/2" (38mm) diameter faucet holes required
  - Maximum countertop thickness is 2" (51mm)
- Stainless steel construction (spout, body, and handle)
- 360° swing spout
- Available in the following finishes
  - Polished stainless steel **LK7720PSS**
  - Satin stainless steel **LK7720SSS**
- Ceramic disc cartridge
- 3/8 female compression
- Ship Wt. 7-3/4 lbs. (3.5Kg)
- Due to the weight of this faucet, Elkay recommends that it be installed to an 18 gauge stainless steel sink (or heavier) or to a solid surface counter top
- Maximum flow rate
  - 2.5 GPM/9.5 L/min at 80 P.S.I.G.
  - 2.2 GPM/8.3 L/min at 60 P.S.I.G.

**WARRANTY**

- Limited Lifetime

**COMPLIES WITH:**

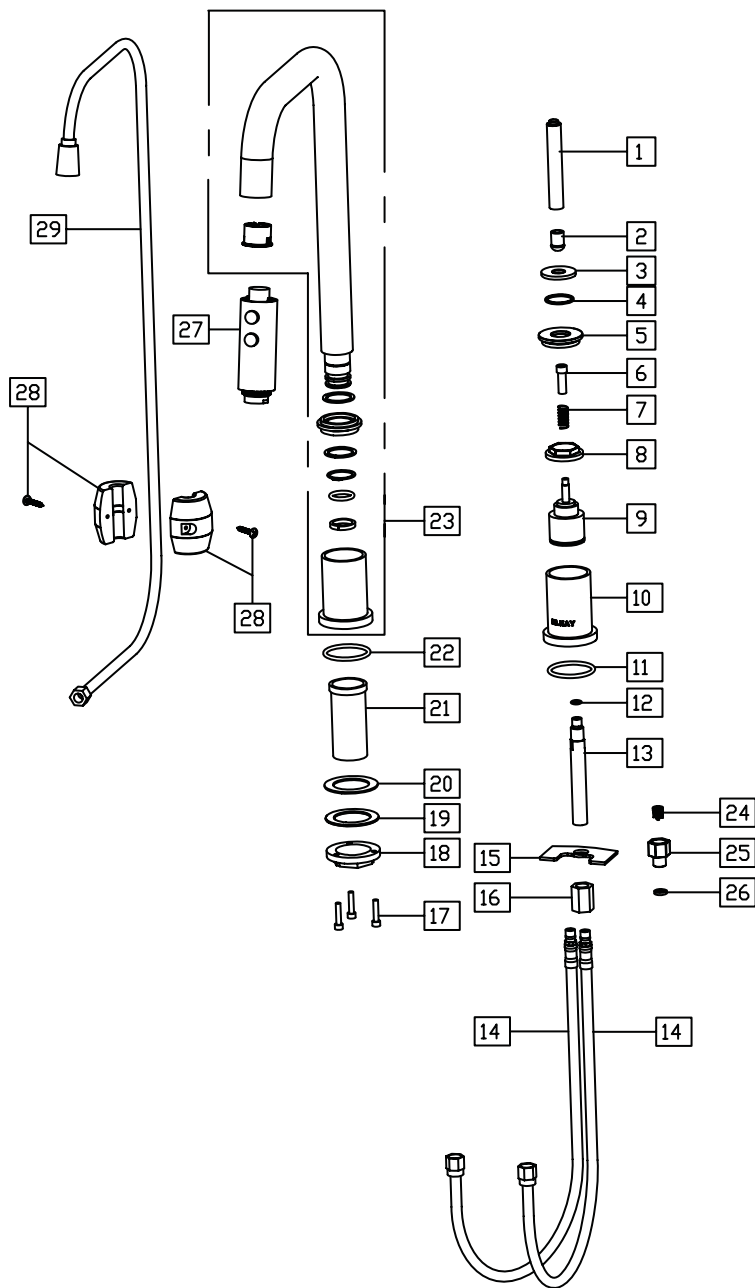
- ADA
- ANSI/NSF61 - Certified
- ASME A112.18.1/CSA B125.1
- CA AB1953/VT S152



SEE OTHER SIDE FOR REPLACEMENT PARTS

### Ella™ Single Handle Kitchen Faucet Model LK7720

FINISH CODE	FINISH
PSS	POLISHED
SSS	SATIN



ITEM	IND. PART	KIT. PART	DESCRIPTION
1	P01251*	N/A	HANDLE
2	P01252	N/A	HANDLE HEAD
3	P46032*	N/A	VALVE COVER PLATE
4	P35242	N/A	PLASTIC RING
5	P02154*	N/A	VALVE CAP
6	P36113	N/A	SCREW
7	P35156	N/A	SPRING
8	P01255	N/A	NUT
9	P29119	N/A	CARTRIDGE
10	P47085*	N/A	VALVE BODY
11	P37122	N/A	O-RING
12	P37102	N/A	O-RING
13	P48016	N/A	SHANK HOSE
14	P47001XX	N/A	SUPPLY HOSE
15	P35179	LK772	MOUNTING HARDWARE
16	P02157		
17	P36132	LK773	AERATOR ASSEMBLY
18	P02156		
19	P35147		
20	P35148		
21	P35238	N/A	MOUNTING SHANK
22	P37122	N/A	O-RING
23	N/A	LK782*	SPOUT ASSEMBLY
24	P28114	LK774*	PULL DOWN ASSEMBLY
25	P46047		
26	P35181		
27	P44308*		
28	P44309		
29	P45001XX	N/A	SUPPLY HOSE

\*-DESIGNATES A PART THAT WILL NEED THE FINISH CODE (FROM THE TOP CHART) ADDED TO THE END FOR ORDERING. I.E. LK778PSS