

ELKAY[®]

SPECIFICATIONS

Gourmet[®] Undermount Single Bowl Sink Model ELU2115 and ELUH2115 Series

GENERAL

Highest quality sink formed of #18 (1.2mm) gauge, type 304 (18-8) nickel bearing stainless steel. Select models available with Statement feature. Undermount.

DESIGN FEATURES

Bowl Depth: 7-1/2" (191mm) (ELU[H]2115), 10" (254mm) (ELU[H]211510).

Coved Corners: 1-3/4" (44mm) vertical and horizontal radius.

Finish ELU2115: Exposed surfaces are hand blended to a Lustrous Satin finish.

Finish ELUH2115: Exposed surfaces are hand blended to a Lustrous Highlighted Satin finish.

Underside: Underside of sink is fully protected by heavy duty Sound Guard[®] undercoating to reduce condensation and dampen sound.

OTHER

Drain Opening: 3-1/2" (89mm).

Note: All Elkay undermount sinks are designed to affix to the underside of any solid surface countertop.

Sink complies with ASME A112.19.3-2008 / CSA B45.4-08.



These sinks are listed by the International Association of Plumbing and Mechanical Officials as meeting the requirements of the Uniform Plumbing Code.

OPTIONAL ACCESSORIES

Bottom Grid: LKWOBG2115SS

Cutting Board (ELUH model only): CB1516

Drain: LK99

Rinsing Baskets: LKWRB2115SS, LKWERBSS

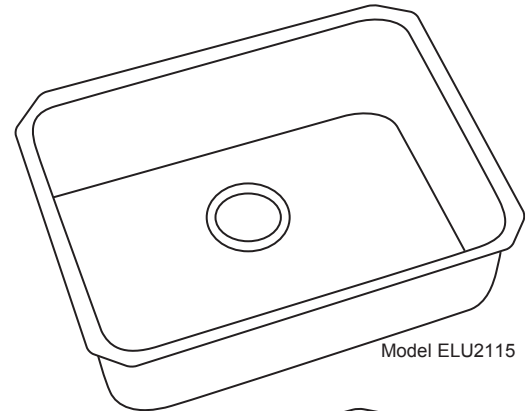
Utensil Caddy for Rinsing Basket: LKWUCSS

Mounting Clip: LKUCLIP8

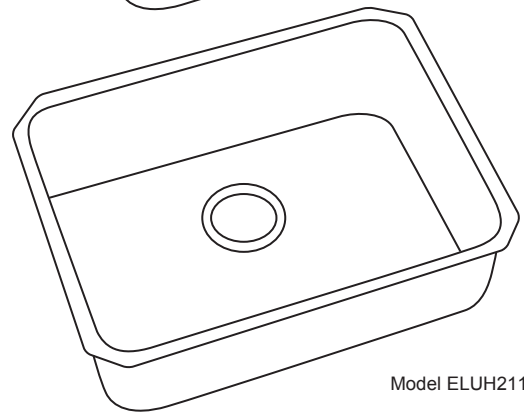
SINK PACKAGE(S)

MODEL	SINK	BOTTOM GRID	QTY	DRAIN	QTY
ELU2115DBG	ELU2115	LKWOBG2115SS	1	LK99	1
ELU211510DBG	ELU211510	LKWOBG2115SS	1	LK99	1
ELUH2115DBG	ELUH2115	LKWOBG2115SS	1	LK99	1
ELUH211510DBG	ELUH211510	LKWOBG2115SS	1	LK99	1

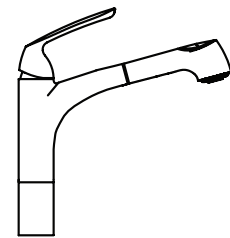
MODEL	SINK	FAUCET	QTY
LKGTPKG1CR	ELU2115	LKGT1041CR	1
LKGTPKG1NK	ELU2115	LKGT1041NK	1



Model ELU2115



Model ELUH2115

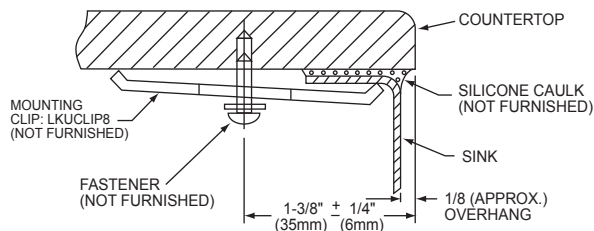


Model LKGT1041

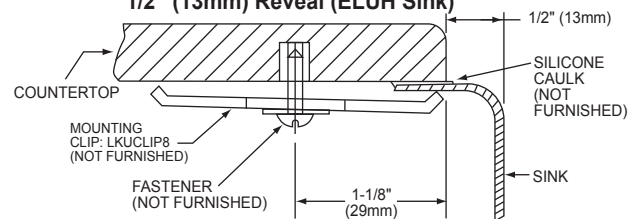
Installation Profile of ELU and ELUH Single Bowl Models

The template provided with each ELU/ELUH sink provides the only type of installation recommended by Elkay.

1/8" (3mm) Overhang (ELU Sink)



1/2" (13mm) Reveal (ELUH Sink)



In keeping with our policy of continuing product improvement, Elkay reserves the right to change product specifications without notice. Please visit elkay.com for the most current version of Elkay product specification sheets.

This specification describes an Elkay product with design, quality, and functional benefits to the user. When making a comparison of others producers offerings, be certain these features are not overlooked.

**Gourmet® Undermount Single Bowl Sink
Models ELU2115 and ELUH2115 Series**

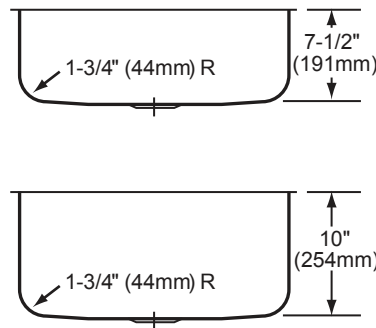
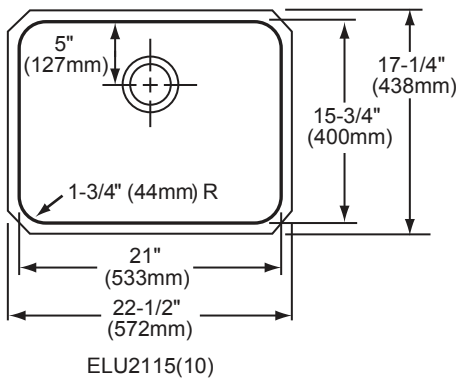
**ELKAY®
SPECIFICATIONS**

SINK DIMENSIONS*

Model Number	Overall		Inside Bowl			Cutout in Countertop	Minimum Cabinet Size
	L	W	L	W	D		
ELU2115	22 ¹ / ₂ (572mm)	17 ¹ / ₄ (438mm)	21 (533mm)	15 ³ / ₄ (400mm)	7 ¹ / ₂ (191mm)	See Template**	27 (686mm)
ELU211510	22 ¹ / ₂ (572mm)	17 ¹ / ₄ (438mm)	21 (533mm)	15 ³ / ₄ (400mm)	10 (254mm)		27 (686mm)
ELUH2115	23 ¹ / ₂ (597mm)	18 ¹ / ₄ (464mm)	21 (533mm)	15 ³ / ₄ (400mm)	7 ¹ / ₂ (191mm)		27 (686mm)
ELUH211510	23 ¹ / ₂ (597mm)	18 ¹ / ₄ (464mm)	21 (533mm)	15 ³ / ₄ (400mm)	10 (254mm)		27 (686mm)

*Length is left to right. Width is front to back.

**Template #74180162 (ELU2115(10)) or #74180250 (ELUH2115(10)) is packed with every sink.



In keeping with our policy of continuing product improvement, Elkay reserves the right to change product specifications without notice. Please visit elkay.com for the most current version of Elkay product specification sheets.

This specification describes an Elkay product with design, quality, and functional benefits to the user. When making a comparison of others producers offerings, be certain these features are not overlooked.