

ELKAY[®]

SPECIFICATIONS

elumina™ by Elkay Undermount Single Bowl Sink Model EGUH2115

GENERAL

Fine quality sink bowl seamlessly formed of #18 gauge, type 304 nickel bearing stainless steel.

DESIGN FEATURES

Bowl Depth: 8".

Coved Corners: 3" vertical and 2-1/4" horizontal radius.

Finish: Exposed surfaces are polished to a non-directional soft satin finish.

Underside: Sound absorbing pads applied to dampen sound.

OTHER

Drain Opening: 3-1/2".

Note: All Elkay undermount sinks are designed to affix easily to the underside of any solid surface countertop.

OPTIONAL ACCESSORIES

Rinsing Baskets: LKRB1520 or LKERBSS.

Cutting Boards: CB1516 or CB1713.

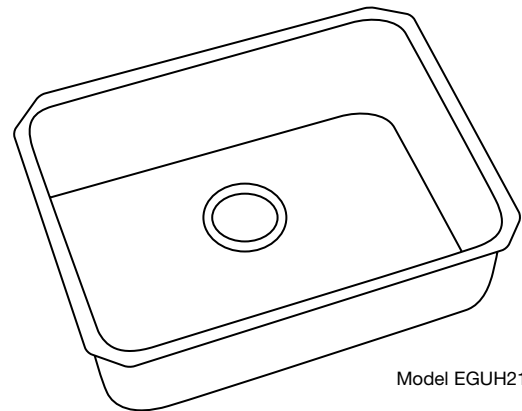
This sink complies with ANSI Standard A112.19.3M.

SINK DIMENSIONS (INCHES)*

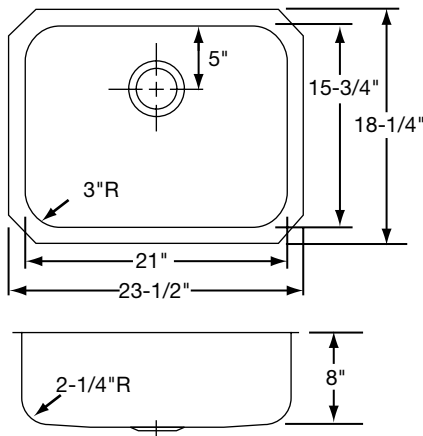
Model Number	Overall		Inside Bowl			Cutout in Countertop See Template**	Minimum Cabinet Size	Ship. Wt. Lbs.
	L	W	L	W	D			
EGUH2115	23 1/2	18 1/4	21	15 3/4	8		27	15 1/2

*Length is left to right. Width is front to back.

**Template and countertop mounting clips are packed with every sink.



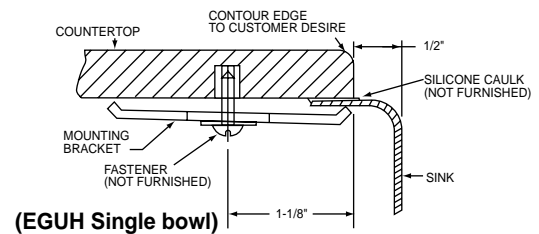
Model EGUH2115



Model EGUH2115 Illustrated

Installation Profile of EGUH Single Bowl Models

The template provided with each EGUH sink provides the only type of installation recommended by Elkay.



ALL DIMENSIONS IN INCHES, TO CONVERT TO MILLIMETERS MULTIPLY BY 25.4.

In keeping with our policy of continuing product improvement, Elkay reserves the right to change product specifications without notice.

This specification describes an Elkay product with design, quality and functional benefits to the user. When making a comparison of other producers' offerings, be certain these features are not overlooked.