

**Lustertone® Spacious Single Bowl  
Model LR Series Sinks  
Model LRAD – A.D.A. Compliant Series Sinks**



**SPECIFICATIONS**

**GENERAL**

Lustertone sink with spacious sink bowl. Highest quality sink seamlessly drawn of #18 gauge, type 304 (18-8) nickel bearing stainless steel. Self-rimming.

**DESIGN FEATURES**

LR Bowl Depth: 8" (LR2521), 7-1/2" (all others).

LRAD Bowl Depth: 5-1/2", 6" or 6-1/2".

Coved Corners: 1-3/4" radius.

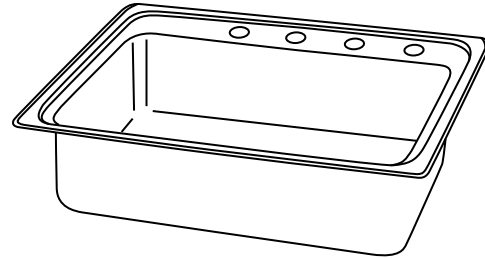
Bowl and Faucet Deck Recess: 3/16" below outside edge of sink.

Finish: Exposed surfaces are hand blended to a lustrous high-lighted satin finish.

Underside: Fully undercoated to dampen sound and prevent condensation. LR2521 is fully protected by heavy duty Sound Guard™ undercoating.

**OTHER**

Drain Opening: LR Series drain opening is 3-1/2" and centered in bowl as illustrated. LRAD1517, LRAD1716, LRAD1720 and LRAD1919 drain opening is 3-1/2" and centered in the bowl. LRAD1522, LRAD1722, LRAD2022, LRAD2222 and LRAD3122 drain opening is 3-1/2" and located centered right-to-left and off-center front-to-back in bowl as illustrated.



Model LR25214

NOTE: Unless otherwise specified, models with one, two or three faucet hole option are shipped with 3 faucet holes standard; models with choice of one, two, three, four or five faucet hole option are shipped with 4 faucet holes standard.

**SINK DIMENSIONS (INCHES)\***

Model Number	Overall		Inside Bowl			Cutout in Countertop (1 1/2" Radius Corners)		No. of 1 1/2" Dia. Faucet Holes 4" Centers	Ship. Wt. Lbs.	3 1/2" Drain Opening (see above for details)
	L	W	L	W	D	L	W			
	A	B	C	D		L	W			
<b>LR Series</b>										
LR1517	15	17 1/2	12	12	7 1/2	14 3/8	16 7/8	1, 2 or 3	10	Centered
LR1522	15	22	11 1/2	16	7 1/2	14 3/8	21 3/8	1, 2 or 3	12	Centered
LR1716	17	16	14	10	7 1/2	16 3/8	15 3/8	1, 2 or 3	12	Centered
LR1720	17	20	14	14	7 1/2	16 3/8	19 3/8	1, 2 or 3	12	Centered
LR1722	17	22	13 1/2	16	7 1/2	16 3/8	21 3/8	1, 2 or 3	13	Centered
LR1918	19	18	16	11 1/2	7 1/2	18 3/8	17 3/8	1, 2 or 3	13	Centered
LR1919	19 1/2	19	16	13 1/2	7 1/2	18 7/8	18 5/8	1, 2 or 3	13	Centered
LR2022	19 1/2	22	16	16	7 1/2	18 7/8	21 3/8	1, 2 or 3	13	Centered
LR2219	22	19 1/2	18	14	7 1/2	21 3/8	18 7/8	***	13	Centered
LR2222	22	22	19	16	7 1/2	21 3/8	21 3/8	***	13	Centered
LR2521	25	21 1/4	21	15 3/4	8	24 3/8	20 5/8	***	15	Centered
LR3122	31	22	28	16	7 1/2	30 3/8	21 3/8	***	19	Centered
<b>LRAD Series</b>										
LRAD1517	15	17 1/2	12	12	**	14 3/8	16 7/8	1, 2 or 3	10	Centered
LRAD1522	15	22	11 1/2	16	**	14 3/8	21 3/8	1, 2 or 3	12	Off-Centered
LRAD1716	17	16	14	10	**	16 3/8	15 3/8	1, 2 or 3	12	Centered
LRAD1720	17	20	14	14	**	16 3/8	19 3/8	1, 2 or 3	12	Centered
LRAD1722	17	22	13 1/2	16	**	16 3/8	21 3/8	1, 2 or 3	13	Off-Centered
LRAD1919	19 1/2	19	16	13 1/2	**	18 7/8	18 5/8	1, 2 or 3	13	Centered
LRAD2022	19 1/2	22	16	16	**	18 7/8	21 3/8	1, 2 or 3	13	Off-Centered
LRAD2222	22	22	19	16	**	21 3/8	21 3/8	***	13	Off-Centered
LRAD3122	31	22	28	16	**	30 3/8	21 3/8	***	19	Off-Centered

\*Length is left to right. Width is front to back.

\*\*Available in 5 1/2", 6" and 6 1/2" depths. Please consult your sales representative for other depths or modifications.

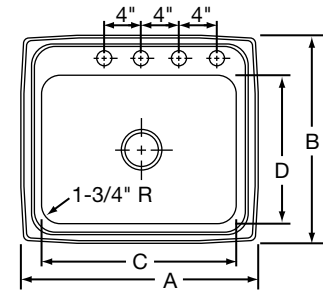
\*\*\*1, 2, 3, 4 or 5 holes.

THIS PRODUCT, AS CONSTRUCTED IS SUBJECT TO INTERPRETATION OF A.D.A. REQUIREMENTS. THE UNOBSTRUCTED KNEE SPACE REQUIRED TO SATISFY A.D.A. STANDARDS MAY NOT BE DESIRABLE.

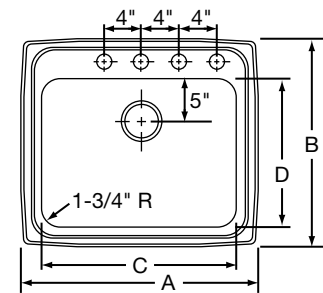
ALL DIMENSIONS IN INCHES, TO CONVERT TO MILLIMETERS MULTIPLY BY 25.4.

In keeping with our policy of continuing product improvement, Elkay reserves the right to change product specifications without notice.

This specification describes an Elkay product with design, quality and functional benefits to the user. When making a comparison of other producers' offerings, be certain these features are not overlooked.



LR Series Illustrated



LRAD Series Off-Center Drain Model Illustrated  
LRAD1522 Drain Off-Centered 4-1/2" From Back