

ELKAY® SPECIFICATIONS

Gourmet Single Bowl Sinks Models PSR and PSRQ Series, and PSRADQ – A.D.A. Compliant Series

GENERAL

Fine quality sink formed of #20 gauge, type 304 (18-8) nickel bearing stainless steel. Top mount.

DESIGN FEATURES

Bowl Depth: 7-1/4" (184mm) (PSRS(Q)3322), 7-1/2" (191mm) (PSR(Q)2521 and PSR(Q)2522), 5-1/2" (140mm) (PSRADQ1919), 7-1/8" (181mm) (all others).

Coved Corners: 1-3/4" (44mm) vertical and horizontal radius.

Rim Height: 3/8" (10mm) PSR(Q)2522; 5/32" (4mm) all others

Finish: Exposed surfaces are polished to a Bright Satin finish.

Underside: Fully undercoated to dampen sound and reduce condensation.

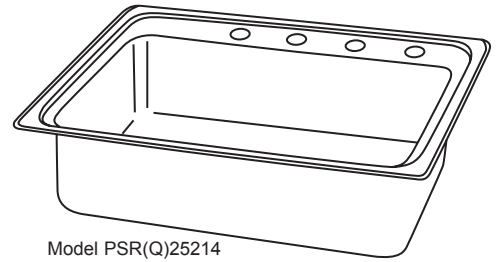
OTHER

Drain Opening: 3-1/2" (89mm) (see back page for location).

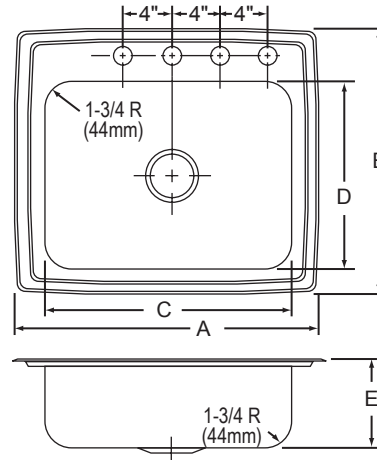
Sink complies with ASME A112.19.3-2008 / CSA B45.4-08.



These sinks are listed by the International Association of Plumbing and Mechanical Officials as meeting the requirements of the Uniform Plumbing Code.



Model PSR(Q)25214



SINK DIMENSIONS (INCHES)*

U-Channel Model Number	Quick-Clip® Model Number	Overall		Inside Each Bowl			Cutout in Countertop (1-1/2" (38mm) Radius Corners)		No. of 1-1/2" (38mm) Dia. Faucet Holes 4" (102mm) Center	Minimum Cabinet Size
		L	W	L	W	D	L	W		
		A	B	C	D	E	L	W		
PSR1517	PSRQ1517	15 (381mm)	17-1/2 (445mm)	12 (305mm)	12 (305mm)	7-1/8 (181mm)	14-3/8 (365mm)	16-7/8 (429mm)	1, 2, MR2 or 3	18
PSR1716	PSRQ1716	17 (432mm)	16 (406mm)	14 (356mm)	10 (254mm)	7-1/8 (181mm)	16-3/8 (416mm)	15-3/8 (391mm)	1, 2, MR2, 3 or OS4	21
PSR1720	PSRQ1720	17 (432mm)	20 (508mm)	14 (356mm)	14 (356mm)	7-1/8 (181mm)	16-3/8 (416mm)	19-3/8 (492mm)	1, 2, MR2, 3 or OS4	21
PSR1722	PSRQ1722	17 (432mm)	22 (559mm)	13-1/2 (343mm)	16 (406mm)	7-1/8 (181mm)	16-3/8 (416mm)	21-3/8 (543mm)	1, 2, MR2, 3 or OS4	21
PSR1918	PSRQ1918	19 (483mm)	18 (457mm)	16 (406mm)	11-1/2 (292mm)	7-1/8 (181mm)	18-3/8 (467mm)	17-3/8 (441mm)	1, 2, MR2, 3 or OS4	24
PSR2219	PSRQ2219	22 (559mm)	19-1/2 (495mm)	18 (457mm)	14 (356mm)	7-1/8 (181mm)	21-3/8 (543mm)	18-7/8 (479mm)	1, 2, MR2, 3, 4 or 5	27
PSR2222	PSRQ2222	22 (559mm)	22 (559mm)	19 (483mm)	16 (406mm)	7-1/8 (181mm)	21-3/8 (543mm)	21-3/8 (543mm)	1, 2, MR2, 3, 4 or 5	27
PSR2521	PSRQ2521	25 (635mm)	21-1/4 (540mm)	21 (533mm)	15-3/4 (400mm)	7-1/2 (191mm)	24-3/8 (619mm)	20-5/8 (524mm)	1, 2, MR2, 3, 4 or 5	30
PSR2522	PSRQ2522	25 (635mm)	22 (559mm)	21 (533mm)	15-3/4 (400mm)	7-1/2 (191mm)	24-3/8 (619mm)	21-3/8 (543mm)	1, 2, MR2, 3, 4 or 5	30
PSR3122	PSRQ3122	31 (787mm)	22 (559mm)	28 (711mm)	16 (406mm)	7-1/8 (181mm)	30-3/8 (772mm)	21-3/8 (543mm)	1, 2, MR2, 3, 4 or 5	36
Not Available	PSRADQ191955L	19-1/2 (495mm)	19 (483mm)	16 (406mm)	13-1/2 (343mm)	5-1/2 (140mm)	18-7/8 (479mm)	18-3/8 (467mm)	1, 2, MR2, 3 or OS4	24
Not Available	PSRADQ191955R	19-1/2 (495mm)	19 (483mm)	16 (406mm)	13-1/2 (343mm)	5-1/2 (140mm)	18-7/8 (479mm)	18-3/8 (467mm)	1, 2, MR2, 3 or OS4	24
PSRS3322	PSRSQ3322	33 (838mm)	22 (559mm)	28 (711mm)	16 (406mm)	7-1/4 (184mm)	32-3/8 (822mm)	21-3/8 (543mm)	1, 2, MR2, 3, 4 or 5	36

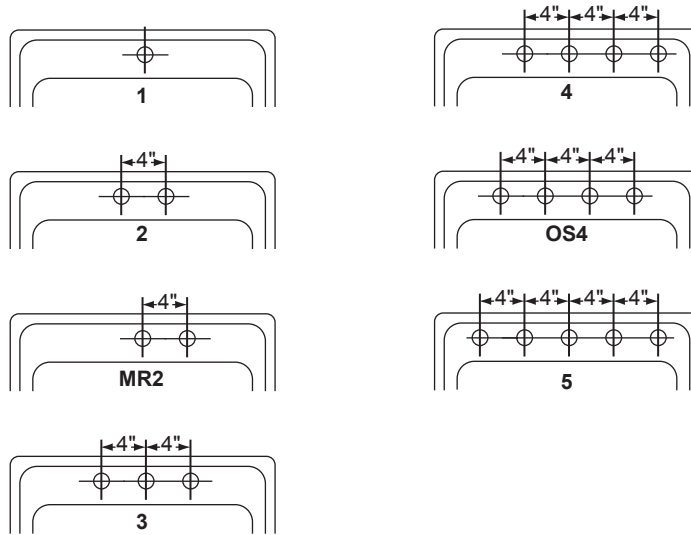
*Length is left to right. Width is front to back.

THIS PRODUCT AS CONSTRUCTED IS SUBJECT TO INTERPRETATION OF A.D.A. REQUIREMENTS.
THE UNOBSTRUCTED KNEE SPACE REQUIRED TO SATISFY A.D.A. STANDARDS MAY NOT BE DESIRABLE.

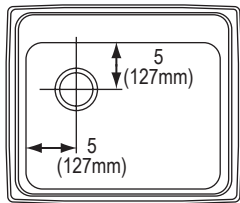
In keeping with our policy of continuing product improvement, Elkay reserves the right to change product specifications without notice.

This specification describes an Elkay product with design, quality and functional benefits to the user. When making a comparison of other producers' offerings, be certain these features are not overlooked.

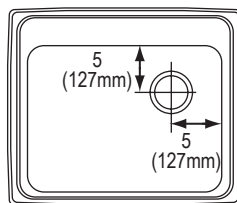
HOLE DRILLING CONFIGURATIONS



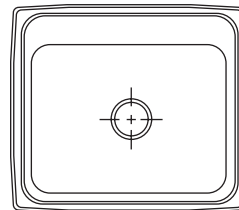
DRAIN OPENING LOCATIONS



Off-Centered Left
PSRADQ191955L Model Only

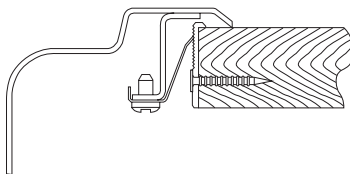


Off-Centered Right
PSRADQ191955R Model Only



Centered
(All Other Models)

Quick-Clip® Mounting System



U-Channel Type Mounting System

