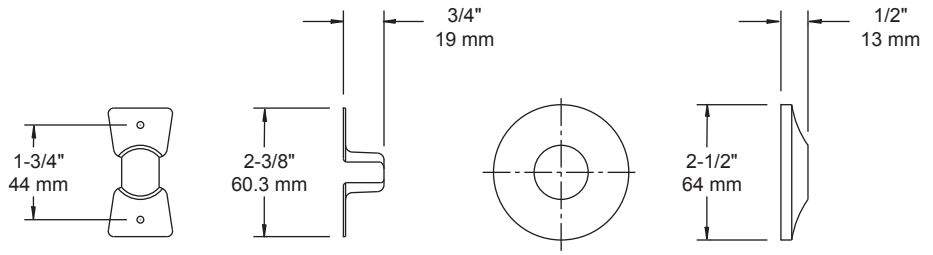


# TECHNICAL DATA

## Shower Rods

E176FL



- MATERIALS:** Flanges are galvanized steel hanger type with concealed screw type 430 polished stainless steel covers.
- INSTALLATION:** Install hanger type flanges with 4 - #8 X 1-1/4" round head zinc plated steel screws provided. Cover flanges to be on rod before installation of hangers and rod. Slide cover flanges over hangers to complete installation. Wood blocking is preferable behind all wall surfaces. If wood blocking is not available, the following optional fasteners are suggested:
- Tile/Masonry - Plastic or Lead Anchors
  - Plaster/Drywall - Toggle Bolts.
- SPECIFICATION:** Surface mounted shower rod shall be model \_\_\_\_\_ (fill in model number and length) by Liberty Hardware Manufacturing Corporation.