

TECHNICAL DATA

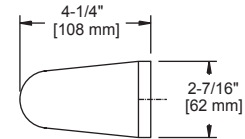
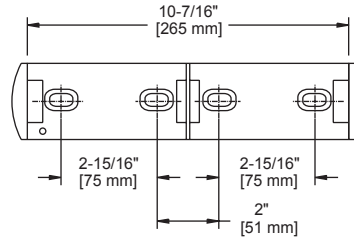
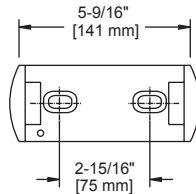
Public Washroom

1974, 1976

(1974)



(1976)



MATERIALS:

Paper holder back plate and projecting arms are heavy duty die cast zinc (Zamak), highly polished and chrome plated. Fixed arm is secured to back plate with 2 machine screws and lock washers. Hinged arm is secured to back plate with a steel pin. Push button is plastic. Spring catch is 22 gauge galvanized steel.

INSTALLATION:

1974 - Mount paper holder to wall surface through 2 holes in back plate (2-15/16" C-C) with 2 - #9 x 1-1/2" round head zinc plated steel screws provided.

1976 - Mount paper holder to wall surface through 4 holes in back plate (2-15/16" C-C each side set; 2" C-C between side sets; 7-7/8" C-C outside holes) with 4 - #9 x 1-1/2" round head zinc plated steel screws provided. Wood blocking is preferable behind all wall surfaces. If wood blocking is not available, the following fasteners are suggested: Tile/Masonry - Plastic or Lead Anchors, Plaster/Drywall - Toggle Bolts.

SPECIFICATION:

Surface mounted toilet paper holder shall be model _____
(fill in model number) by Liberty Hardware Manufacturing Corporation.