



### Features:

- Cast brass valves
- Ceramic disc valve cartridge
- Adjustable hot limit safety stop
- Pressure Balance cartridge maintains constant output temperature in response to changes in relative hot and cold supply pressures
- Multi-functional showerhead

Pictured: 816/450 Shower Set

Showerhead Maximum Flow Rate: 2.5 GPM (9.5L/min)

Kit Options	Handle Type	Product Number	
Shower Set	Lever	816/450	♿
PB Shower Valve Set	Lever	816/130	♿

Rough & Trim Options	Handle Type	Product Number	
Shower Set Trim Only*	Lever	816/485	♿
PB Shower Valve Set Trim Only**	Lever	816/535	♿
Shower Head Only		816/082	
Rough Only		899/260/191	

\* Includes Pressure Balance Shower Valve Trim & Shower Head

\*\* Pressure Balance Shower Valve Trim Only

Available Finishes:	Finish Code
Old Bronze	105
UltraBrass	113
Brushed Nickel	144
Platinum Nickel	150
Diamond (PVD)	167

ROUGH-IN DIAGRAM SHOWN ON REVERSE SIDE


### CODES & STANDARDS

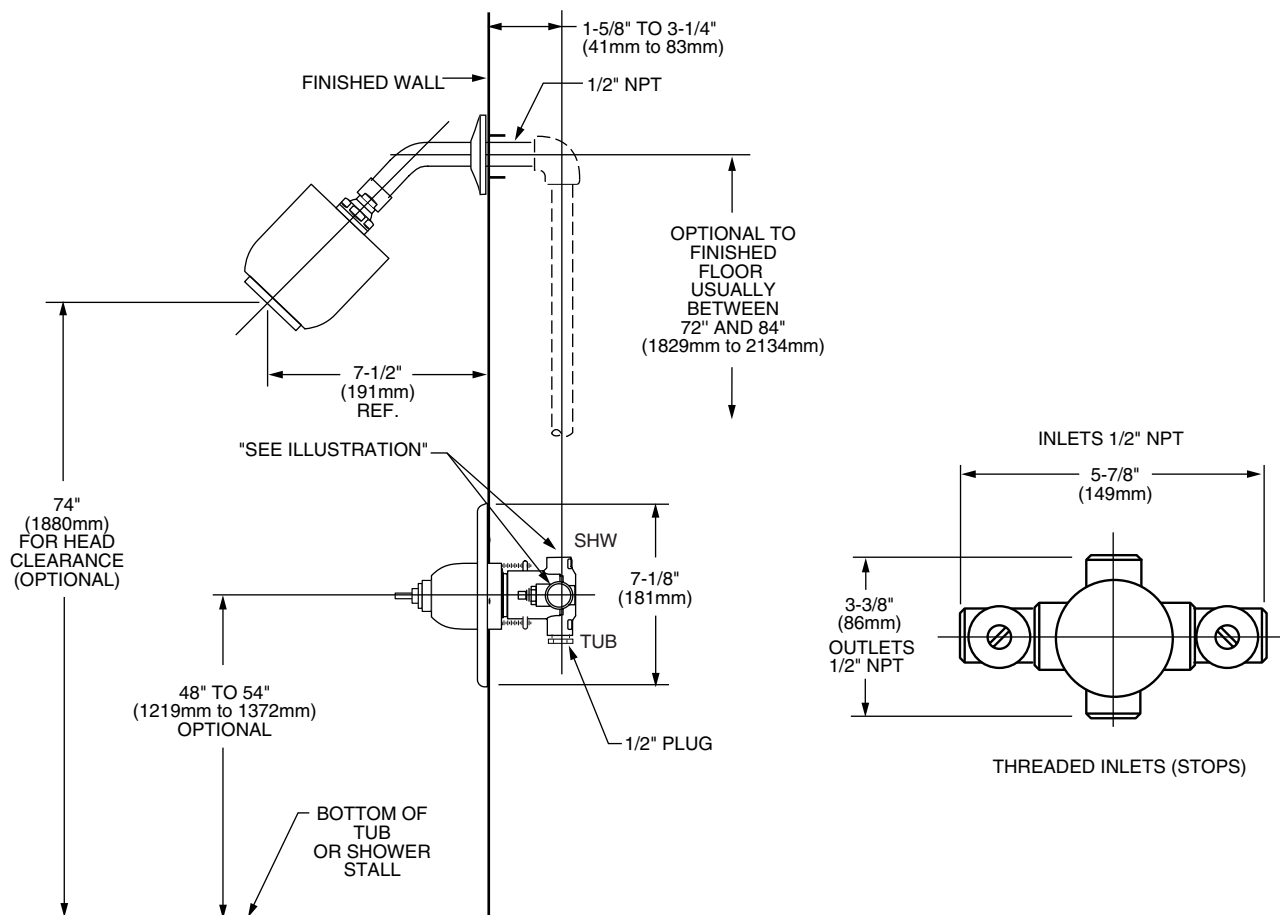
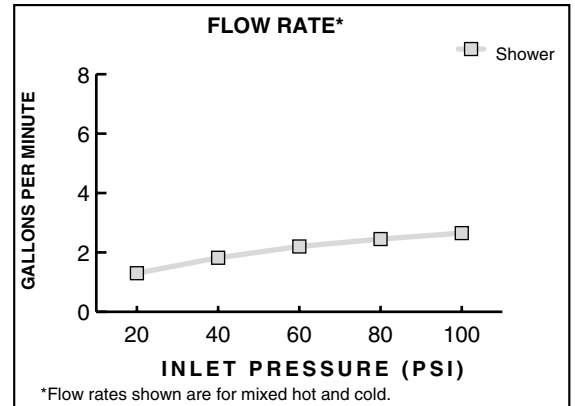
These products meet and exceed the following codes and standards:

**ASME A112.18.1**

**CSA B125**

**ASSE 1016**

 Meets the American Disabilities Act Guidelines and **ANSI A117.1** Requirements for the physically challenged.



**IMPORTANT:** These measurements are subject to change or cancellation. No responsibility is assumed for use of superseded or voided pages.