




**Pictured:**  
845/O28 Wall Mount Tub Filler with Cross Handles

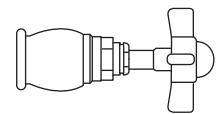
### Features:

- Five-Function Traditional Hand Shower
- 6" center-to-center spread installation
- Hand Shower features 5 ft (1.5m) decorative metal hose
- Drain not included
- Available with Cross or Lever Handles
- Porcelain handle buttons
- Maximum Hand Shower Flow Rate: 2.5 GPM (9.5L/min)

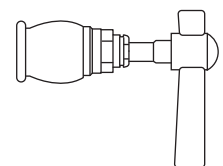
Description	Handle Type	Product Number	Available Finishes	Finish Code
Wall Mount Tub Filler with Hand Shower	Cross	845/O28	Polished Chrome	100
Wall Mount Tub Filler with Hand Shower	Lever	845/O38 	Brushed Nickel	144
			Platinum Nickel	150

ROUGH-IN DIAGRAM  
SHOWN ON REVERSE SIDE

### Handle Options:



Cross Handle

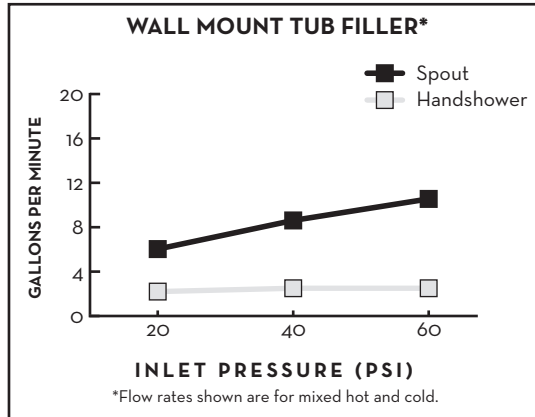



Lever Handle

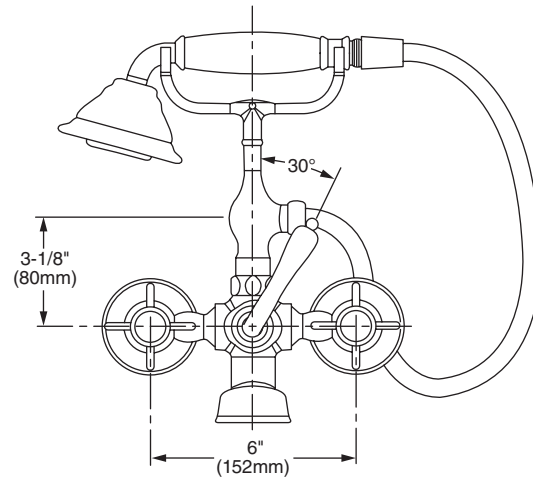
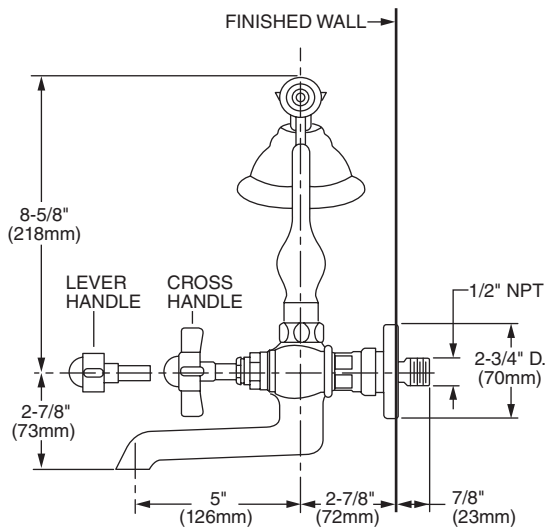
## CODES & STANDARDS

These products meet and exceed the following codes and standards:

- ASME A112.18.1
- CSA B125.1



 Meets the American Disabilities Act Guidelines and ANSI A117.1 Requirements for the physically challenged.



NOTE: MOUNTING HOLES ARE 1-3/8" D. (35mm)

IMPORTANT: These measurements are subject to change or cancellation. No responsibility is assumed for use of superseded or voided pages.

