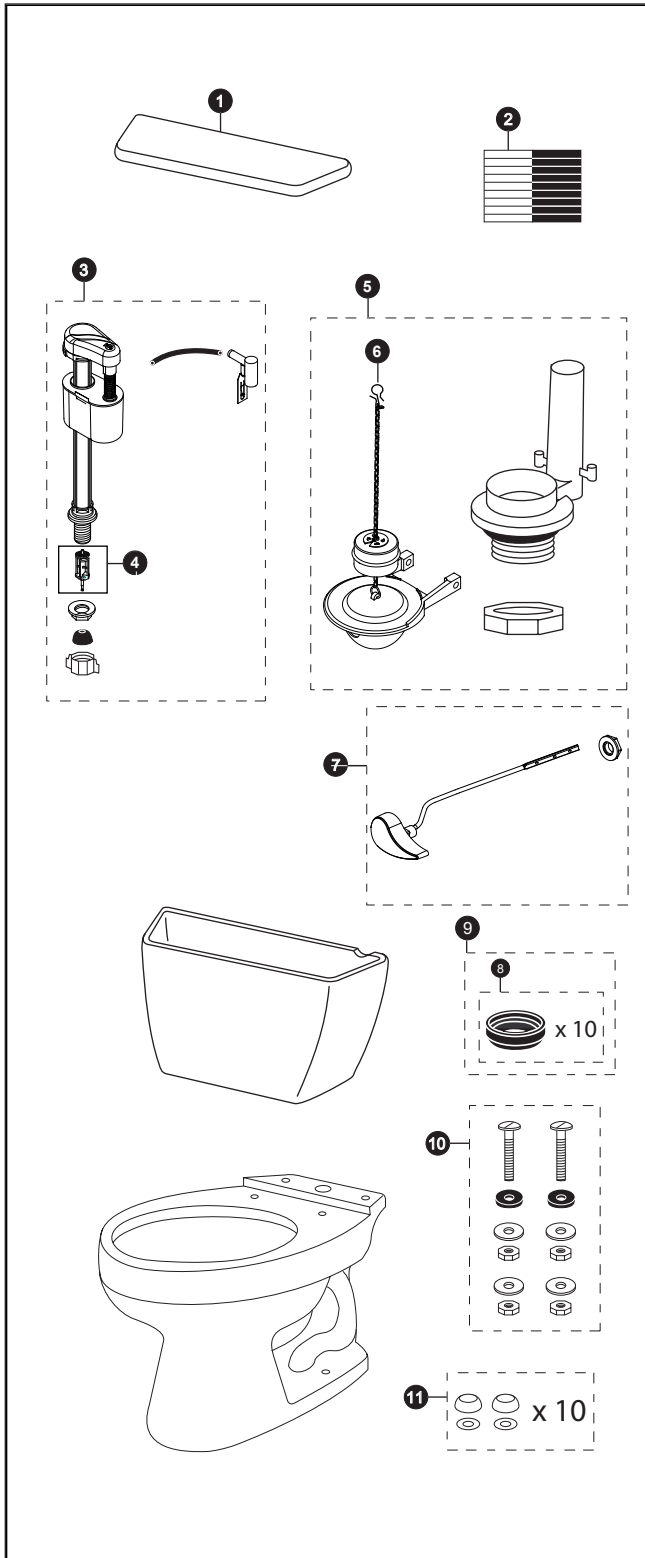


# CST744EF.10

CST744EF.10  
ST743E  
C744EF.10

## Drake® 1.28 Gpf Toilet, Elongated, E-Max®, 10" Rough-In Universal Height



Item	Part	Description
1	TCU743CRE#01	Tank Lid w/ Velcro Tape
2	THU107	Velcro Tape
3	TSU33A	Fill Valve
4	THU229	Fill Valve Filter
5	THU252W-A	Flush Valve Assembly w/Flapper
6	THU277S	Flapper w/ Float & Chain
7	THU068#01 THU068#CP THU068#BN THU068#PN	Trip Lever Trip Lever Trip Lever Trip Lever
8	THU131	Tank to Bowl Gaskets (for 10 toilets)
9	9BU024E	3" Tank to Bowl Gasket
10	TSU01D	Tank Mounting Kit
11	THU098#01	Bolt Cap Sets (for 10 toilets) for #01 & #11

### Product Number Explanations

#### Two-Piece Toilet

(CST) Gravity Type Toilet  
(744) Model  
(E) E-Max®  
(F) Universal Height  
(.10) 10" Rough In

#### Colors

(#01) Cotton

#### Tank

(ST) Tank  
(743) Model  
(E) E-Max®

#### Finishes

(#CP) Chrome Plated  
(#BN) PVD Brushed Nickel  
(#PN) PVD Polished Nickel

#### Bowl

(C) Bowl  
(744) Model  
(E) E-Max®  
(F) Universal Height  
(.10) 10" Rough-In