

980-WS909AGVCP

Combo Valve & Turret

PRODUCT TYPE

Combo valve & turret

FEATURES & SPECIFICATIONS

- Polished chrome plated finish
- Solid brass construction
- Turret with one ball valve
- Lever handle with air, gas and vac service buttons
- Removable serrated hose nozzle, catalog #E7T
- 3/8" NPT inlet shank, catalog #979-003K

PERFORMANCE SPECIFICATION

- Rated Operating Pressure: 20-125 PSI
- Rated Operating Temperature: 40-140° F

WARRANTY

- Lifetime Limited Warranty
- 1-Year Limited Finish Warranty

COMPLIANT TO

- ANSI Z21.5a
- CGA 9.1M

| | |
|---|--|
| Job Name | _____ |
| Item Number | _____ |
| Section/Tag | _____ |
| Model Specified | _____ |
| Architect | _____ |
| Engineer | _____ |
| Contractor | _____ |
| <input type="checkbox"/> Submitted as Shown | <input type="checkbox"/> Submitted with Variations |
| Date | _____ |



980-WS909AGVCP

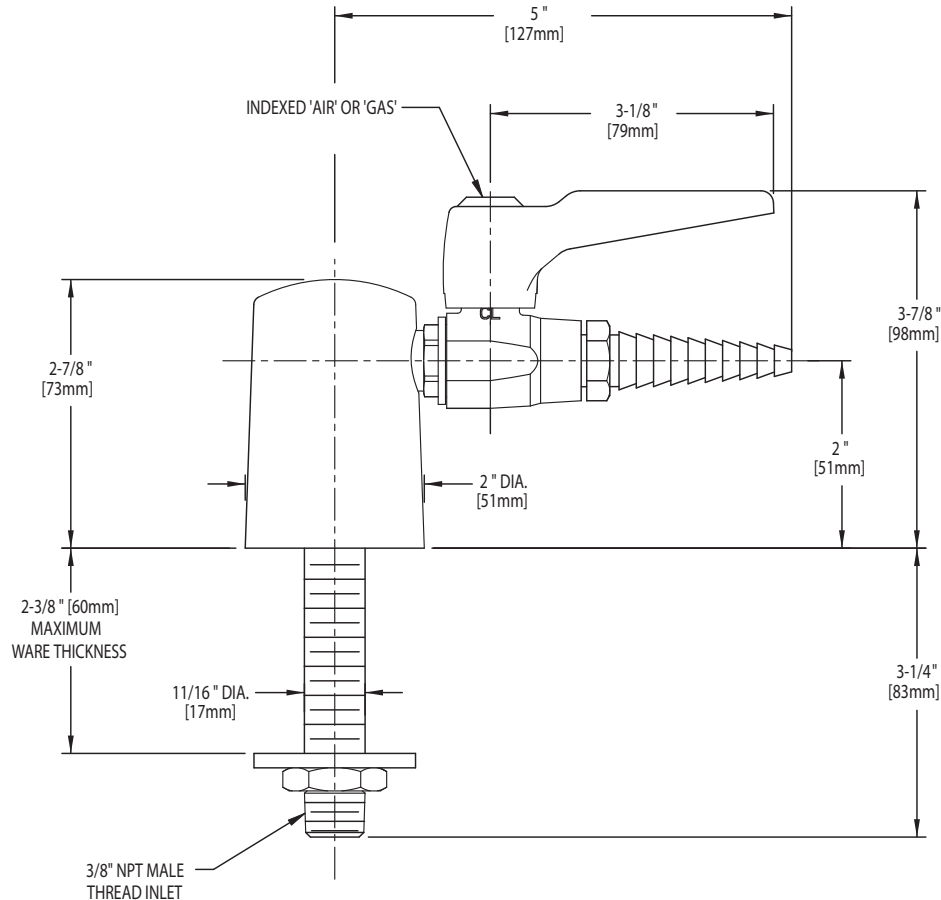
Combo Valve & Turret

**CHICAGO
FAUCETS**

a Geberit company

ARCHITECT/ENGINEER SPECIFICATION

Chicago Faucets No. 980-WS909AGVCP, Polished chrome plated solid brass construction. Turret with one ball valve. Lever handle with air, gas and vac service button. Removable serrated hose nozzle and 3/8" NPT inlet shank. This product is tested and certified to industry standards: ANSI Z21.5a and CGA 9.1M.



OPERATION AND MAINTENANCE

Installation should be in accordance with local plumbing codes. Flush all pipes thoroughly before installation. After installation, remove spout outlet or flow control and flush faucet thoroughly to clear any debris. Care should be taken when cleaning this product. Do not use abrasive cleaners, chemicals or solvents as they can result in surface damage. Use mild soap and warm water for cleaning and protecting the life of Chicago Faucet products. For specific operation and maintenance refer to the installation instructions and repair parts documents that are located at www.chicagofaucets.com.

Chicago Faucets, member of the Geberit Group, is the leading brand of commercial faucets and fittings in the United States, offering a complete range of products for schools, laboratories, hospitals, office buildings, food service, airports and sport facilities. Call 1.800.TECTRUE or 1.847.803.5000 Option 1 for installation or other technical assistance.

2100 South Clearwater Drive
Des Plaines, IL 60018
P: 847/803-5000
F: 847/803-5454
Technical: 800/TEC-TRUE
www.chicagofaucets.com