

CHICAGO[®] FAUCETS

2100 SOUTH CLEARWATER DRIVE
DES PLAINES, ILLINOIS 60018-5999

FITTING NO.

940

SUBMITTED MODEL NO.

JOB NAME

ITEM NO.

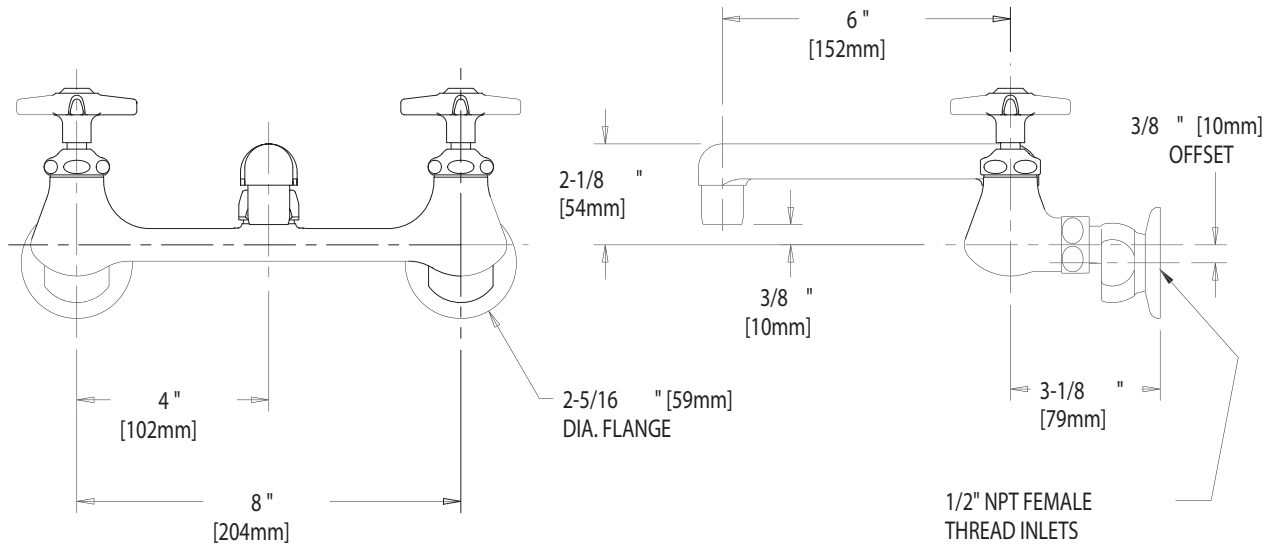
SUBMITTED AS SHOWN

SUBMITTED AS NOTED

SEE ATTACHED FOR
SUBMITTED MODIFICATION

IS ASSUMED FOR USE OF SUPERCEDED OR VOIDED DATA. (0192-1)

ROUGHING IN DIMENSIONS MAY VARY AND ARE SUBJECT TO CHANGE. NO RESPONSIBILITY



DIMENSIONS IN INCHES AND [MILLIMETERS].

TECHNICAL DATA

- WALL MOUNTED LABORATORY FITTING
- S6 SWING SPOUT
- 204 INDEXED 4-ARM HANDLES
- SLO-COMPRESSION UNITS
- POLISHED CHROME FINISH OR AS SPECIFIED

- 'G' ADJUSTABLE SUPPLY ARMS
- E3 SOFTFLO OUTLET
- 2.0 GPM [7.6 L/min.]
- ANSI A112.18.1 COMPLIANT
- CSA B125 COMPLIANT

@ 80 PSI

DATE: 05-22-97

BY: MGM

CHK'D:

APP'D:

REV: 05-22-97

940