

PARTS LIST

BY: JAR
CHK'D:



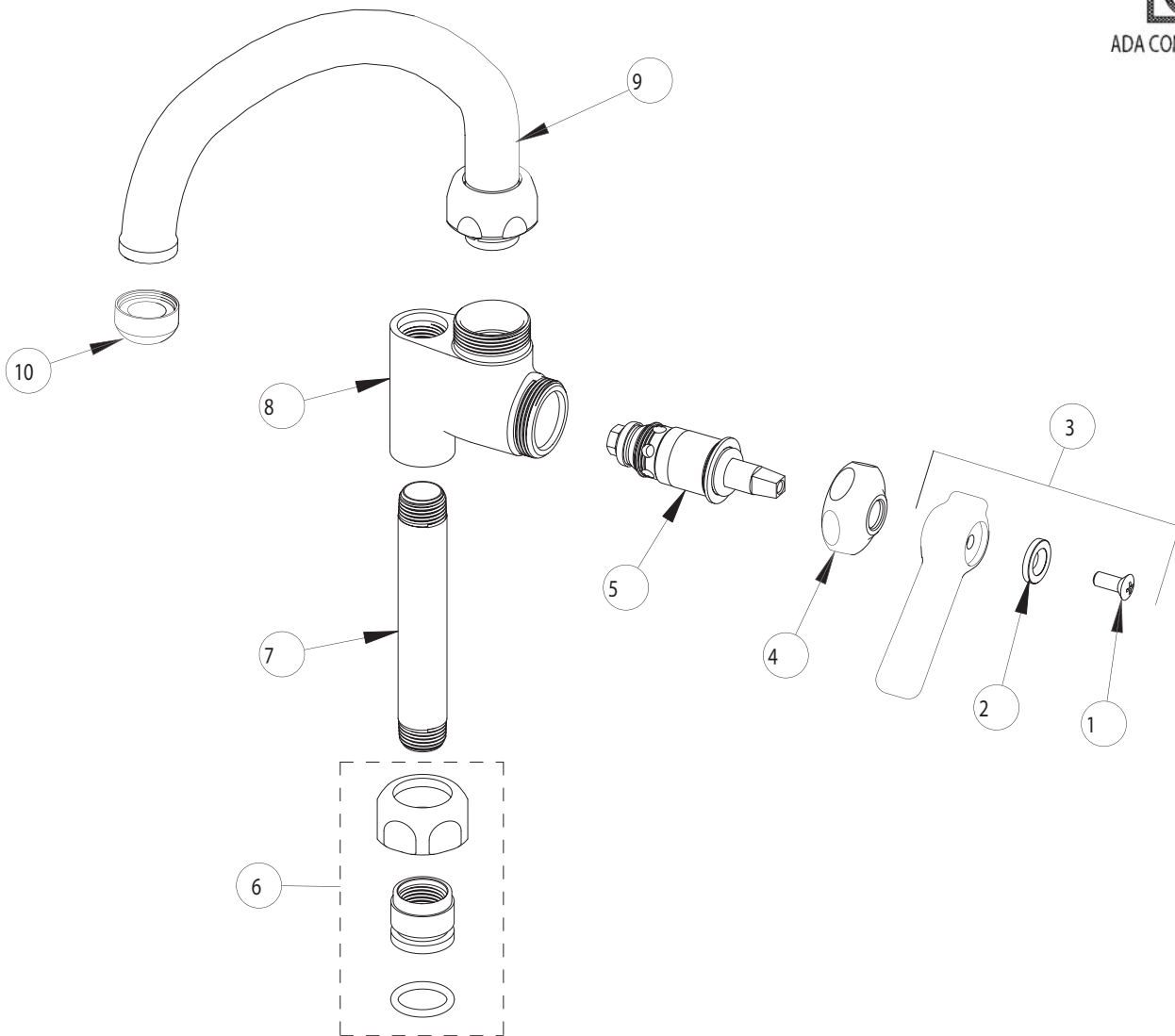
FINISH:
DATE:

CP
10-10-01

613-A



ADA COMPLIANT



NOTE:
ITEMS 7 IS ADHESIVED TO
ITEM 8 AT THE FACTORY BUT
IS AVAILABLE AS A 'JK' PART.

ITEM NO.	PART NO.	DESCRIPTION
1	420-010	SCREW
2	633-223	INDEX BUTTON (WHITE)
3	369-PL	PLAIN LEVER HANDLE
4	1-214	CAP
5	1-099XT	QUATURN UNIT (RH)
6	143-PP	PRE-PACK
7	906-002	NIPPLE (3/8" X 4")
8	-----	VALVE BODY (NOT SOLD SEPERATELY)
9	L9E1	FOR PARTS SEE L9E1
10	E1	QUIXTOP OUTLET