

PARTS LIST

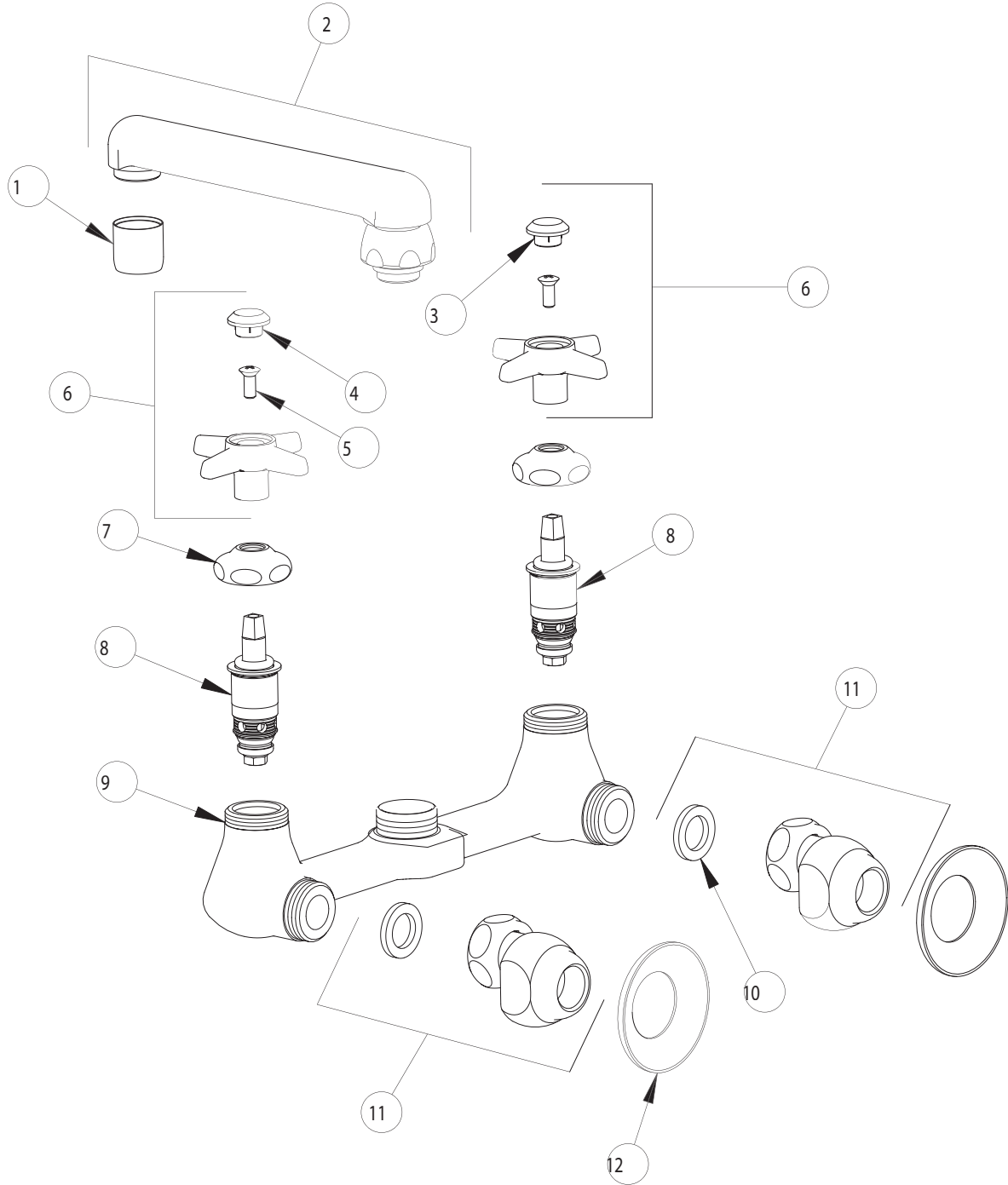
BY: SID
CHK'D:



FINISH:
DATE:

AS SPECIFIED
10-29-01

940



ITEM NO.	PART NO.	DESCRIPTION	ITEM NO.	PART NO.	DESCRIPTION
1	E3	SOFTFLO OUTLET	7	1-214	CAP
2	S6	FOR PARTS SEE S6 INCLUDES E3	8	217XTLH	SLO-COMPRESSION UNIT (LH)
3	216-128	'HW' INDEX BUTTON	9	-----	VALVE BODY (NOT SOLD SEPARATELY)
4	216-178	'CW' INDEX BUTTON	10	1-011	WASHER
5	420-010	SCREW	11	G	'G' ARM (INCLUDES WASHER)
6	204PR	4-ARM HANDLE ASSEMBLY	12	1-055	FLANGE