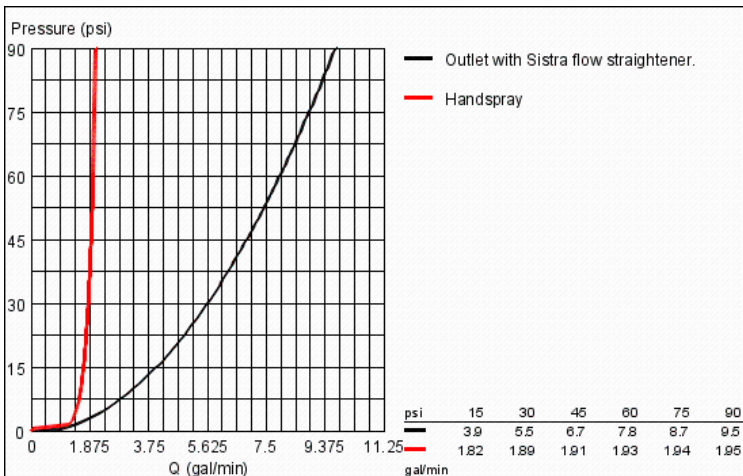
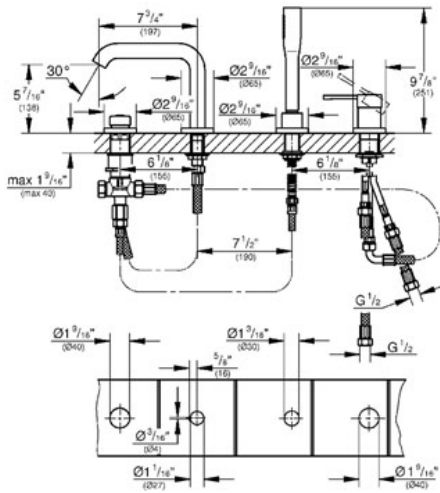


# ESSENCE Four-hole Single-lever Bath Combination

MODEL # 19578

GROHE America, Inc | 200 North Gary Avenue, Suite G, Roselle, IL 60172  
Phone: +1 (800) 444-7643 | Fax: +1 (800) 225-2778 | us-customerservice@grohe.com

Pure Freude an Wasser



## ADA

### Product Description: Four-hole Single-lever Bath Combination

#### Standard Specification:

- GROHE StarLight® finish
- GROHE SilkMove® ceramic cartridge
- Pre-assembled spout mounting
- OHM operating element
- Swivel bath inlet with flow control
- Diverter bath/shower
- Handshower
- 79" metal shower hose
- Stainless Steel Braided Flexible Supplies
- Connection for shower hose
- **Protected against backflow**
- Without baseframe
- Trim set for 29 037 000
- Max Flow Rate 6.3 gpm (23.8 L/min), 2.5 gpm (9.5 L/min) for Hand Shower

#### Applicable Codes & Standards:

- Energy Policy Act of 1992
- ASME A112.18.1/CSA B125.1
- ICC/ANSI A117.1

#### Color:

- 19578 000 chrome
- 19578 EN0 Brushed Nickel