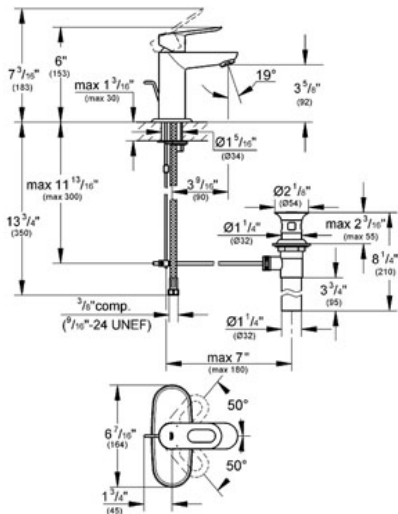


BAULOOP  
Lavatory Centerset  
MODEL # 20333

Pure Freude an Wasser



GROHE America, Inc | 200 North Gary Avenue, Suite G, Roselle, IL 60172  
Phone: +1 (800) 444-7643 | Fax: +1 (800) 225-2778 | us-customerservice@grohe.com



**Product Description:**  
Lavatory Centerset

**Standard Specification:**

- Single hole installation
- Metal lever
- 1 1/8" ceramic cartridge
- Chrome Finish
- Flow control
- 1 1/4" pop-up waste set
- 6" escutcheon
- Stainless Steel Braided Flexible Supplies
- Quick installation system
- Max Flow Rate 1.5 gpm (5.7 L/min)

**Applicable Codes & Standards:**

- Energy Policy Act of 1992
- NSF 61
- ASME A112.18.1/CSA B125.1
- US Federal and State material regulations
- EPA WaterSense®
- ICC/ANSI A117.1

**Color:**

- 20333 000 chrome