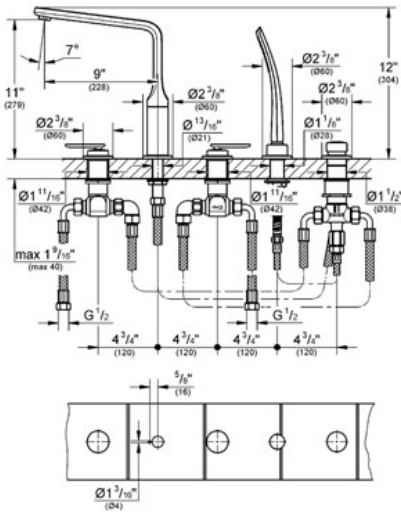


VERIS
5-Hole Bath Combination
MODEL # 19363

Pure Freude an Wasser



GROHE America, Inc | 200 North Gary Avenue, Suite G, Roselle, IL 60172
Phone: +1 (800) 444-7643 | Fax: +1 (800) 225-2778 | us-customerservice@grohe.com



Product Description:
5-Hole Bath Combination

Standard Specification:

- GROHE StarLight® finish

Consisting of:

- Mounting plate and base frame
- 3/4" ceramic cartridges (90° turn)
- Swivel bath inlet with flow control
- Diverter bath/shower
- GROHE Ondus hand shower 27 185 000
- 79" metal shower hose
- Stainless Steel Braided Flexible Supplies
- Connection for shower hose
- Max Flow Rate 12.6 gpm at 45 psi

Applicable Codes & Standards:

- Energy Policy Act of 1992
- ASME A112.18.1/CSA B125.1

Color:

- 19363 000 chrome