

❖ **26010 - Center Hole Lavatory**

- Designed for small and unique spaces
- Fine Fire Clay construction
- Includes overflow
- Available as center hole only
- ADA compliant

**Nominal Dimensions:**

17" x 17" x 4-3/4"  
 (430 x 430 x 121mm)

**Bowl Inside Dimensions:**

13-1/4" (336mm) wide  
 9-1/4" (235mm) front to back  
 3-1/2" (90mm) depth

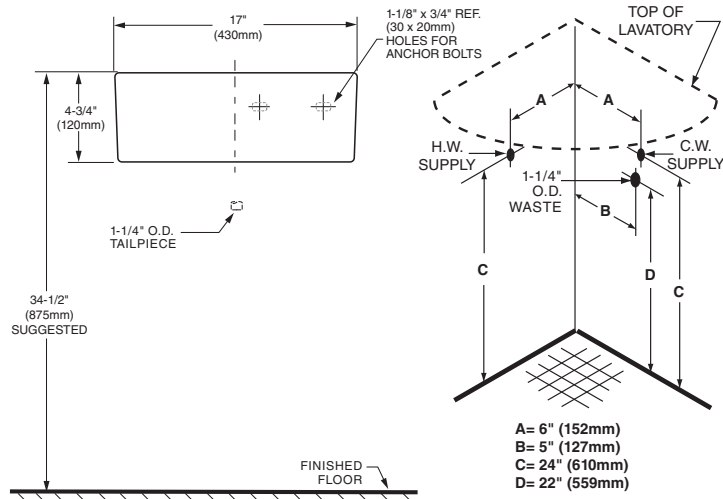
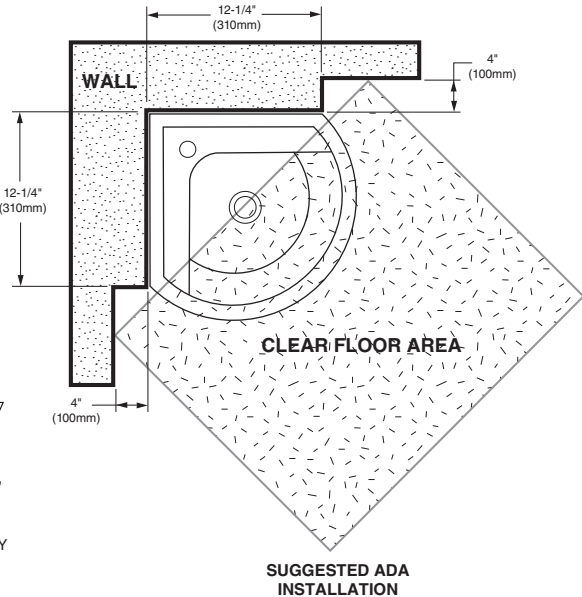
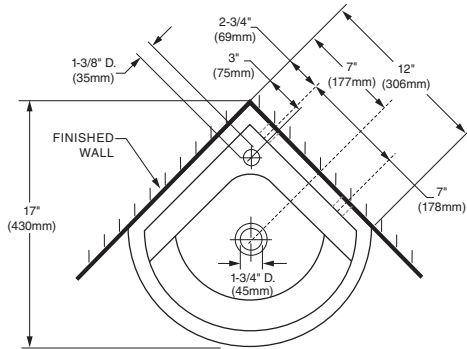
**Basin Colors:**



White  
 001



ROUGH IN DIAGRAM SHOWN  
 ON REVERSE SIDE



### NOTES:

DIMENSIONS SHOWN FOR LOCATION OF SUPPLIES AND "P" TRAP ARE SUGGESTED.

PROVIDE SUITABLE REINFORCEMENT FOR ALL WALL SUPPORTS.

BRACKET SUPPORTS AND MOUNTING FEATURES TO BE FURNISHED BY OTHERS.

FITTINGS NOT INCLUDED AND MUST BE ORDERED SEPARATELY.

TO BE ADA COMPLIANT A CLEAR FLOOR AREA MUST GUARANTEED. SEE GRAPHIC OF TOP VIEW ON THIS PAGE FOR A SUGGESTED ADA INSTALLATION. THE TYPICAL INSTALLATION OF THIS LAVATORY ON A PLAIN CORNER WILL NOT BE ADA COMPLIANT. CHECK ADA STANDARD BEFORE INSTALLATION.

IMPORTANT: Dimensions of fixtures are nominal and may vary within the range of tolerances established by applicable ASME standards. These measurements are subject to change or cancellation. No responsibility is assumed for use of superseded or voided pages.

### To Be Specified:

- ☐ Color:
- ☐ Faucet:
- ☐ Faucet Finish:
- ☐ Supplies:
- ☐ 1-1/4" Trap:

### Compliance Certifications:

- Meets or Exceeds ASME A112.19.2 / CSA B45.1