



MTM Hydro Inc.

Components and accessories for high pressure cleaners and car wash
 7430 Washington Ave So. - Eden Prairie Minnesota 55344
 phone 952.746.4825 - 866.MTM.4020 - fax 952.746.4829 - 866.MTM.4021
 www.mtmhydro.com - info@mtmhydro.com

PROFESSIONAL FOAM LANCE - USERS MANUAL

The Professional Foam Lance combines a high pressure water flow mixed with detergent and air to produce thick clinging foam. With the adjustable intake you can increase or decrease the amount of detergent drawn into the water flow adjusting the amount of foam created. Furthermore, the professional foam lance has a variable angle spray pattern that with a simple twist goes from a 0 degree focused jet to 50 degree fan pattern.

Technical Chart

Part#	Max Pressure (psi)	Max Flow (US gpm)	Max Temperature (°F)	INLET	Ø Nozzle (mm)
14.0349	2,600 psi	2.4 gpm	140°	1/4 F	1.1mm

Product's Use

A pressure washer with a minimum of 1.4 GPM flow and 1,100 PSI is required for the product to operate correctly.

Use fresh clear water, with common detergents. We recommend that any impure fluid be adequately filtered before it is used. Detergents with suspended particles can clog the filter and the product will fail to operate properly.

MTM Hydro, Inc. does not manufacture or supply any of the chemicals used with our product and is not responsible for their effects. Because of the large number of chemicals that could be used (and their different chemical reactions), the buyer and user of this equipment should determine compatibility of the materials used and any of the potential hazards involved.

NOTE: Always remember to carefully read the chemical manufacturer's label and follow all directions.

After every usage prior to storage, rinse and thoroughly flush with clear water. Failure to thoroughly rinse and flush chemicals will cause the filter to clog and the product will fail to operate properly. This failure can occur after the first use.

WARNING: Check to ensure that the product is compatible with the system's operating specifications do not exceed the maximum flow, pressure, and temperature ratings of the product that are listed in this manual (see Technical Chart).

Installation must be done exclusively by skilled workers. The Manufacturer is not responsible or liable for any loss or damage arising from improper installation or installation done by unskilled workers.

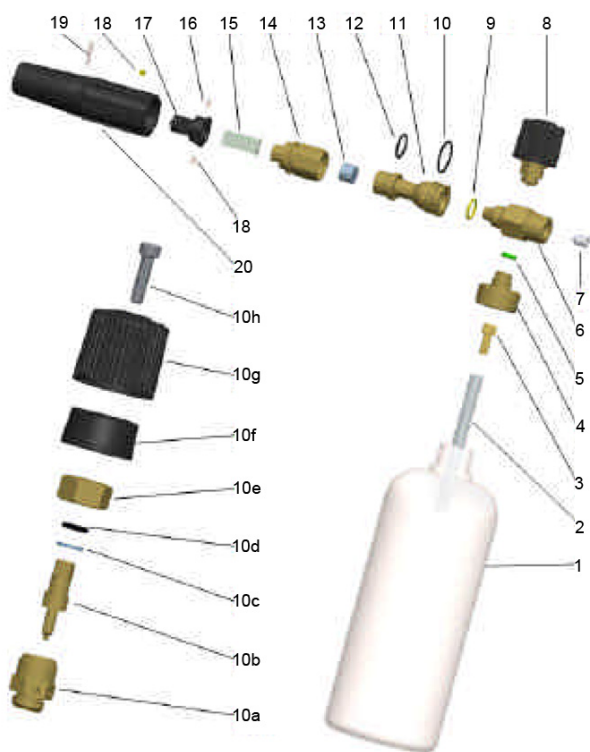
Service

Service must be done exclusively by skilled workers using only original MTM Hydro replacement parts.

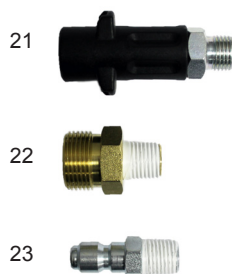
To correctly reassemble, follow the drawing listed in the exploded view in this manual.

WARNING: The components need to be properly reassembled to restore the original conditions of the product. The Manufacturer is not responsible or liable for any loss or damage arising from improper reassembly or service by unskilled workers.

Professional Foam Lance Exploded View and Components List



Position	Qty	Part Number	Description
1	1	37.0253	Tank
2	1	37.0254	Suction Draught Tube
3	1	35.0181	Hose barb Ø6 1/8M
4	1	35.0292	Bottle Connection
5	1	39.0156	Viton O-Ring OR0366 Green
6	1	35.0291	Central Body
7	1	-	Special Nozzle Ø1.1mm
8	1	-	Mechanical Part Air Intake
9	1	39.0014	NBR O-Ring OR2050 Yellow
10	1	39.0321	NRB O-Ring OR2087 70Sh
10a	1	35.0293	Plunger Coupling
10b	1	35.0294	Plunger
10c	1	35.0295	Plunger Washer
10d	1	39.0144	NBR O-Ring OR2031 70Sh
10e	1	35.0296	Plunger Ring Nut
10f	1	37.0156	Plastic Knob Postioning
10g	1	37.0154	Black Plastic Knob
10h	1	38.0115	Screw T.C.E.I. M5x20 Burnished
11	1	35.0290	Upcoming Body
12	1	39.0016	NBR O-Ring OR2062 70Sh
13	1	36.0226	Stainless Steel Filter
14	1	35.0385	Deflector Coupling
15	1	36.0138	Thin Fan Layer Stainless Steel
16	2	36.0140	Pin 3x8
17	1	37.0217	Deflector
18	1	16.0038	Yellow Dot For Ø1.25 Nozzle Identification
19	1	36.0599	Stainless Steel Pin Ø3x20
20	1	37.0408	External Plastic Body
41.0400 Repair Kit - Includes part(s) 39.0014 39.0144 39.0321 39.0016 36.0226			



INCLUDED ATTACHMENT COMPONENTS			
Position	Qty	Description	
21	1	Bayonet Fitting	INSTALLED
22	1	M22 M - 14mm	Included
23	1	1/4" QC Plug	Included

Further Instructions

To correctly install, use, and service this product, carefully read and follow the instructions and warnings contained in this manual. Ensure these instructions are included in the final user's manual of any machine in which the product is assembled.

Any improper use of or alteration of this product may cause loss or injury. The Manufacturer is not responsible or liable for any loss, damage, or injury arising from improper use or alteration and declines all liability for its functioning and safety.

The product described here complies with the rules and the lines in force that you can find in the MTM Hydro, Inc. CONFORMITY DECLARATION.

MTM Hydro declines all responsibility and liability in the case that the compliance and regulations stated in this manual are not followed or respected.

MTM Hydro reserves the right to make any modification to both products and manuals without notice.

MTM Hydro Inc.

Components and accessories for high pressure cleaners and car wash
 7430 Washington Ave So. - Eden Prairie Minnesota 55344
 phone 952.746.4825 - 866.MTM.4020 - fax 952.746.4829 - 866.MTM.4021
 www.mtmhydro.com - info@mtmhydro.com