

LOCATION		DATE
PREPARED BY		QUANTITY
COMMENTS		FIXTURE TYPE
CATALOG NUMBER		

## Dayton Penant DYP Series

### Features

Transitional shaded pendant is available in 24" and 30" diameters. Pendant has a satin nickel finish and includes a hard backed cream linen shade with white acrylic bottom diffuser; open top and center lock up. Pendant is cable mounted and fully adjustable to 4' long. Fixture mounts to a standard junction box (not included).

### Construction

Gear plate is die-formed of 20-gauge steel. Trim ring is 22-gauge steel and finial is die cast aluminum. Power supply connections must be made inside a junction box (not included).

### Finish

Gear plate is finished in lighting grade white baked gloss enamel paint. Trim ring and finial have an applied satin nickel finish with a clear lacquer topcoat.

### Diffuser

Diffuser consists of 24" or 30" hard backed cream linen shade and .090" thick matte white acrylic bottom.

### Electrical

UL listed electronic high power factor instant start ballast for 120-277V 50/60 Hz AC operation.

### Lamping

Universal ballast lamping is ballasted for 4/18 watt for the 24" diameter and 6/18 watt for the 30" diameter; lamps are supplied by others.

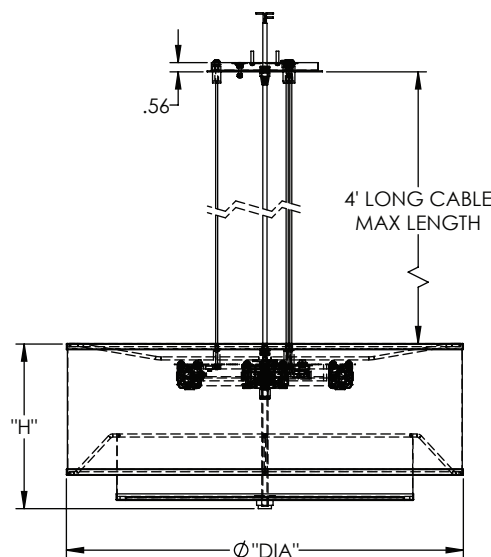
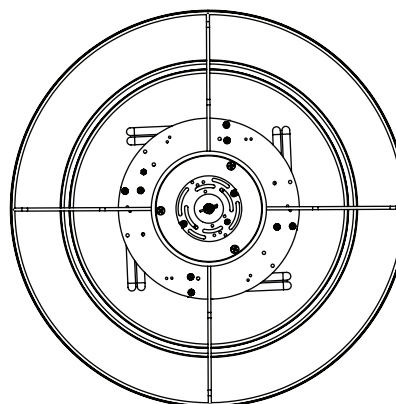
### Certification

All fixtures are cULus listed for damp locations.

### Options

26 watt CFQ 4-pin lamping  
Custom finishes  
24" stem/canopy kit (2) 6" & (1) 12" stems available, Model #DYKR24SN

**Specifications and dimensions**  
subject to change without notice.



## Ordering Information:

Model No.	Finish	Lamps		Dimensions	
120-277V		Qty	Type	H	DIA
DYP418SNMV	Satin Nickel	4	18W CFQ 4-PIN	9"	24"
DYP618SNMV	Satin Nickel	6	18W CFQ 4-PIN	12"	30"