

### Safety Precautions

Read all safety precautions and installation instructions carefully before installing or servicing this fixture. Failure to comply with these instructions could result in potentially fatal electric shock and/or property damage.

It is recommended that a qualified electrician perform all wiring. This fixture must be wired in accordance with all national and local electrical codes.

Do not handle any energized fixture or attempt to energize any fixture with wet hands or while standing on a wet or damp surface or in water.

Make sure that the power source conforms to the requirements of the

fixture. (See labels on fixture housing).

**Models ending in MV power source 120-277V Non-dimmable**

**Models ending in SCTD power source 120V (Self Ballasted dimmable CFL) Usable on a dimming circuit with dimmable lamps**

To reduce the risk of electrical shock, and to assure proper operation, this fixture must be adequately grounded. To accomplish proper grounding there must be a separate ground wire (green) or bare metal contact (metal conduit) between this fixture and the ground connection of your main power supply panel.

This fixture is intended for use as general lighting in dry or damp locations.

### Assembly Instructions

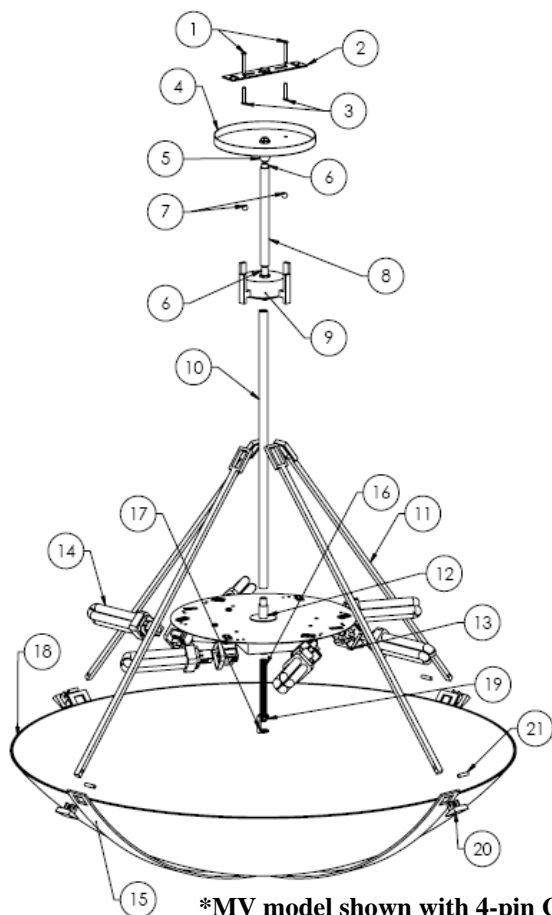
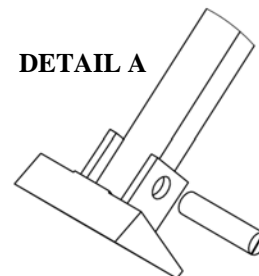
#### 1. Preparing for installation.

- A. **Disconnect electrical power** before installing or servicing any part of this fixture.
- B. Unpack and lay out all of the fixture components in a manner that you can see that you have everything that you need to fully assemble the fixture.

#### 2. Fixture assembly - Lighting fixture is partially assembled

- A. Disassemble entire center section; stems (8, 10), threaded nipples (6), swivel (5) and hanger assembly (9).
  - B. Take the fixture power wires (black and white) and feed them through the nipples (6) and stems (8, 10). Thread the stem/nipple onto the fitting on top of the socket plate (12) until secure.
  - C. Please loctite all stems with supplied loctite to prevent stems from coming undone.
  - D. Insert the wires through a  $\frac{3}{4}$ " nipple at the top of the socket/ballast plate and through the 16" stem (10). Slide wires through  $1\frac{3}{4}$ " threaded nipple inside the hanger assembly (9) and thread nipple  $\frac{1}{4}$ " into stems.
- NOTE: Two 6" and two 12" stems included for desired height between hanger assembly and canopy.**
- E. Insert wire through stem (8) and secure stem to  $\frac{3}{4}$ " nipple (6). Slide wires through top swivel (5), canopy (4) and canopy nut. Loctite and tighten all stems and nipples.
- NOTE: It will be easiest to slide the wire through each stem if the threaded nipples at the top of each item are removed.**
- F. **(See Detail A)** Remove the screw (21) from the decorative arm (11). Insert the arm through the opening with the square hanger on the inside of the diffuser (15). Reattach the screw through the decorative cap (20) and arm and repeat until all 4 arms have been completed.

**DETAIL A**



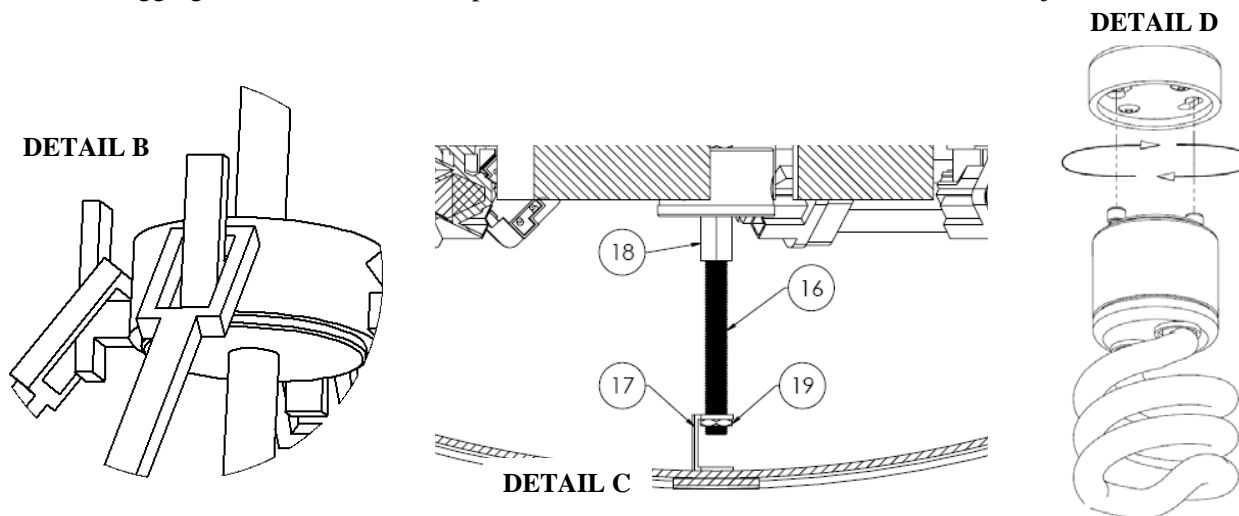
\*MV model shown with 4-pin CFL's

#### 3. Fixture mounting.

- A. Insert  $1\frac{1}{2}$ " screws (3) through offset cross bar (2) and secure to junction box in ceiling (not provided). Be sure that the two screws (1) mounted to the bracket line up with the holes in the canopy (4), and point towards the floor. Slide supply wires

through the center hole of the mounting bracket. **(See Detail B)** Once the fixture has been mounted, attach the hangers to the hooks on the hanger assembly.

- B. **(See Detail C)** Place nipple (16) into open hickey (17) and thread on hexnut (19). Thread top of nipple (16) into hickey (18) and tighten. Adjust height of bowl by adjusting hexnut (19) height on nipple (16) to proper height to avoid sagging of the diffuser. Push up on bottom of diffuser to desired tension and adjust with hexnut.



#### 4. Wiring.

**Caution:** Make sure power is off at fuse or circuit breaker box. Check power wires for damage or scrapes. If power supply wires are within three inches of ballast, use wire suitable for at least 90C (194F). **Note:** Most dwellings built before 1985 have supply wire rated to 60C. Consult a qualified electrician before installing.

- A. This unit will not operate properly unless connected to a “grounded” electrical circuit. Electrical shock, over heating, low or now light output, and shortened lamp life can result if proper grounding is not done. Securely attach green (or green and yellow) wire to provided green ground screw.
- B. Using wire connectors provided, connect white supply wire to white ballast lead. Connect black hot supply wire to black ballast lead. **Do not mix wires.** Pull on each wire to make sure connections are secure. Make certain no bare wires are exposed outside of wire connectors.
- C. Line up the two holes in the canopy (4) with the two screws (1) in the mounting bracket (2). Secure fixture to screws with the two thumb nuts (7) provided.

#### 5. Lamp Installation (Lamps included on models ending with “SCTD”).

- A. For model ending in MV, use only 18 watt fluorescent, quad 4-pin lamps (10). To install, line lamp pins with the corresponding holes in the lamp socket (13) and push lamp into place until a click is heard. Repeat for each lamp.
- B. For models ending in SCTD **(See Detail D) usable on dimming circuit with dimmable GU24 base lamps**, use only GU24 base lamps only (26W max.). To install, line up lamp pins with the corresponding holes in lamp socket and turn clockwise until a click is heard. Repeat for each lamp.

**NOTE: BE CAREFUL NOT TO ROTATE PENDANT DURING LAMP INSTALLATION/REPLACEMENT**

#### Limited Factory Warranty

American Fluorescent Corporation hereby warranty that this fixture is free from defects in materials and workmanship when installed and used under normal operating conditions for a period of 2 years from date of purchase. This warranty covers all component parts and extends only to replacement of defective fixture or components; it does not cover failure due to improper installation, misuse, mishandling or damage incurred in transit.