

**Hudson Series
HZP420/413 & HZP620/613**

Features

Transitional bowl pendant with an interweaving laser cut ornamental element. Pendant is available in 25" and 31" diameters. This product has a satin nickel finish and includes a textured linen acrylic patterned shade with center lock up. Two lamping options are available; universal voltage or line voltage 120V self ballasted dimmable lamps. Pendant is mounted by a stem with an overall height of 23" (minimum dimension). Stem kit includes 12" and 24" increments, which can produce an overall height of up to 59". Product is provided with a swivel hang straight to accommodate up to a 15-degree slope ceiling. Fixture mounts to a standard junction box (not included).

Construction

Gear plate is die-formed of 20-gauge steel. Top/bottom trim ring and decorative laser cut detail are one-piece construction of 22-gauge steel and integrate the linen acrylic diffuser. Finial is die cast aluminum. Power supply connections must be made inside a junction box (not included).

Finish

Gear plate is finished in lighting grade white baked gloss enamel paint. All metal parts are plated satin nickel with a clear lacquer topcoat.

Diffuser

Diffuser consists of 25" or 31" white linen acrylic pattern on vertical sides and bottom.

Electrical

This unit can be ordered in one of two options: a UL listed electronic high power factor instant start ballast for 120-277V 50/60 Hz AC operation or line voltage socket for GU24 self-ballast dimmable lamps.

Lamping

Universal ballast lamping is ballasted for 4/13 watt for the 25" diameter and 6/13 watt for the 31" diameter; lamps are supplied by others. Line voltage version includes lamps and is provided with 4/20 watt self ballasted 2700K spring lamps for the 25" diameter and 6/20 watt for the 31" diameter.

Certification

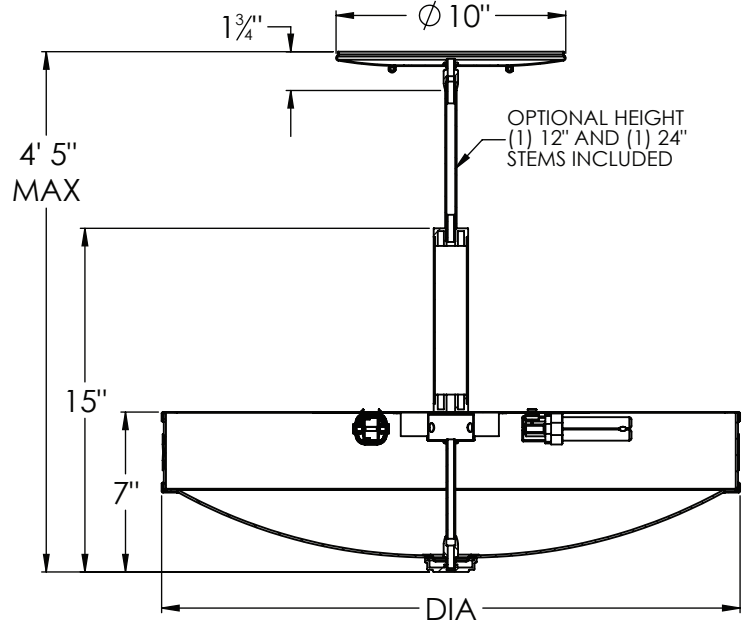
All fixtures are cULus listed for damp locations.

Options

- 18 or 26 watt lamping
- Custom finishes
- ENERGY STAR qualified with GU24 non-dimmable lamps

Specifications and dimensions
subject to change without notice.

Project		Fixture Type
Location		Quantity
Approved By	Date	Catalog Number



Ordering Information:

Model No.	Lamps		Dimensions		
Finish	120V	Qty	Lamp	H	DIA
Satin Nickel	HZP420SNSCTD	4	20W GU24 SELF-BALLAST DIM CFL	28"	25"
Satin Nickel	HZP620SNSCTD	6	20W GU24 SELF-BALLAST DIM CFL	28"	31"
Finish	120-277V	Qty	Lamp	H	DIA
Satin Nickel	HZP413SNMV	4	13W CFQ 4 PIN	28"	25"
Satin Nickel	HZP613SNMV	6	13W CFQ 4 PIN	28"	31"