



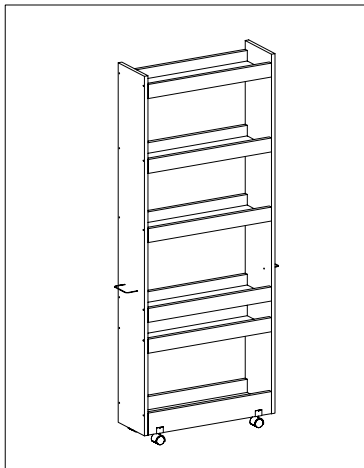
IF PARTS ARE MISSING AND OR DEFECTIVE, IF INSTRUCTIONS ARE NOT CLEAR  
OR IF YOU ARE EXPERIENCING PROBLEMS ASSEMBLING OUR PRODUCT.

**BEFORE YOU RETURN THE PRODUCT TO THE STORE,  
PLEASE CALL US TOLL FREE FOR CUSTOMER SERVICE ASSISTANCE  
(888) 777-8250**

**OR SEND US EMAIL AT**

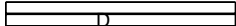
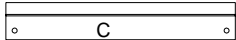
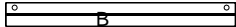
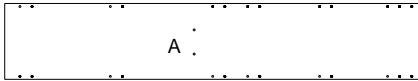
**[help@spartakent.com](mailto:help@spartakent.com)**

PLEASE HAVE ITEM NUMBER READY, AND A REPRESENTATIVE WILL GLADLY ASSIST YOU



# PARTS IDENTIFICATION

NOTE: FIRST MAKE SURE THAT YOU HAVE ALL OF THE PARTS LISTED ON THIS SHEET. IF YOU ARE MISSING ANY PIECE(S), DO NOT ASSEMBLE THE UNIT. INSTEAD, CALL CUSTOMER SERVICE NUMBER AT: (888) 777-8250. WE WILL BE HAPPY TO ASSIST YOU.



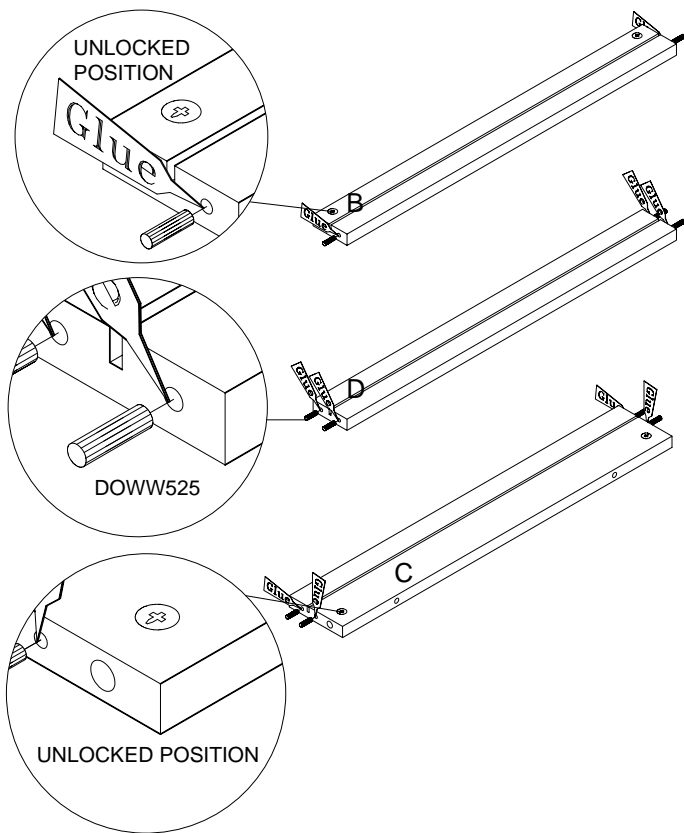
4036A-Side 2pcs  
4010B-Rail 4pcs

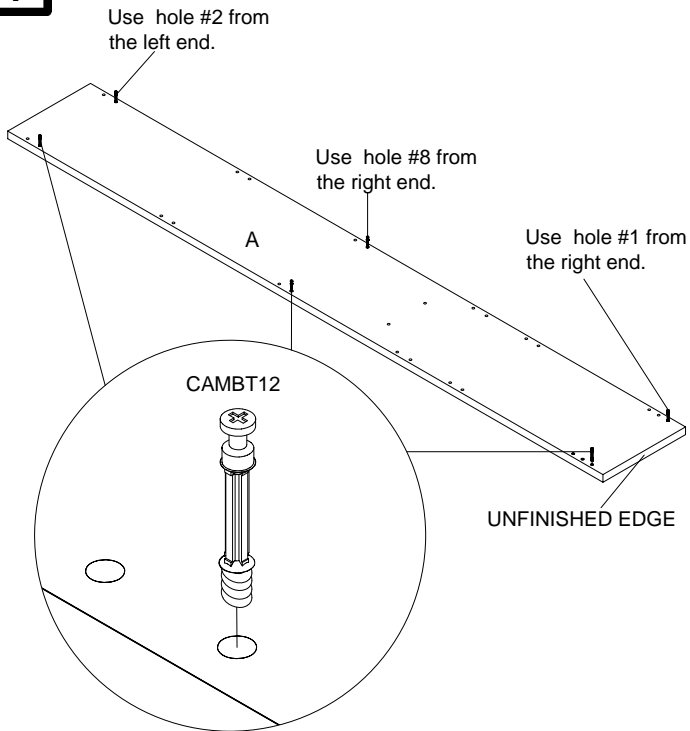
4010C-Bottom Rail 2pcs  
4010D-Rail 6pcs  
4036I-Shelf 6pcs

HARDWARE	PART #	DESCRIPTION	QTY
	UCHAN12	U-CHANNEL	4
	CAS40S	40MM CASTER	4
	PUPL128WH	HANDLE	2
	SP825BL	HANDLE SCREW	4
	CAMLT12	CAMLOCK	12
	CAMBT12	BOLT	12
	DOWW525	WOOD DOWEL	40
	GLUEWD	GLUE	2

**2**

Read the rest of the manual through before you continue assembling. Make sure to put dowels in as far as possible (they should not extend out for more than 3/8).



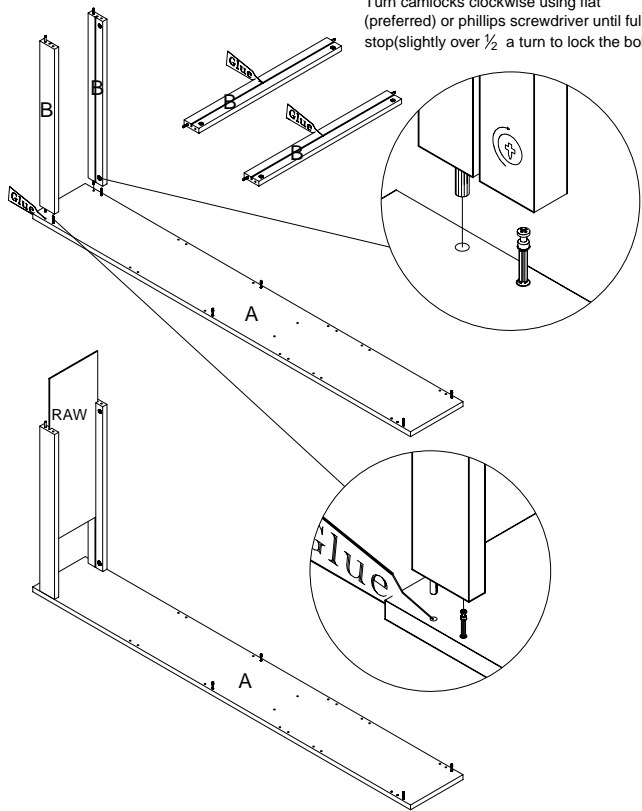
**1**

Install bolts only in the locations indicated on the diagram in both sides A.

**3**

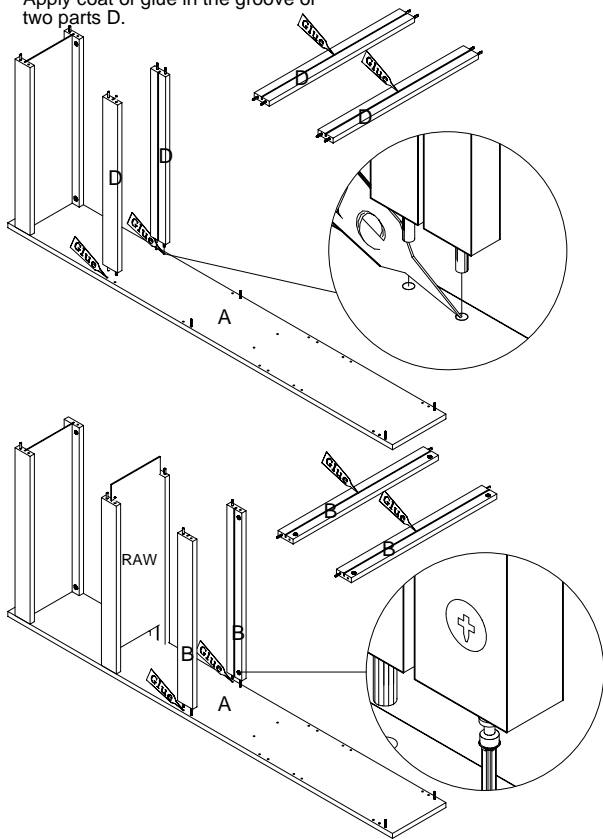
Apply coat of glue in the groove of two parts B.

Turn camlocks clockwise using flat (preferred) or phillips screwdriver until full stop (slightly over  $\frac{1}{2}$  a turn to lock the bolt)



**4**

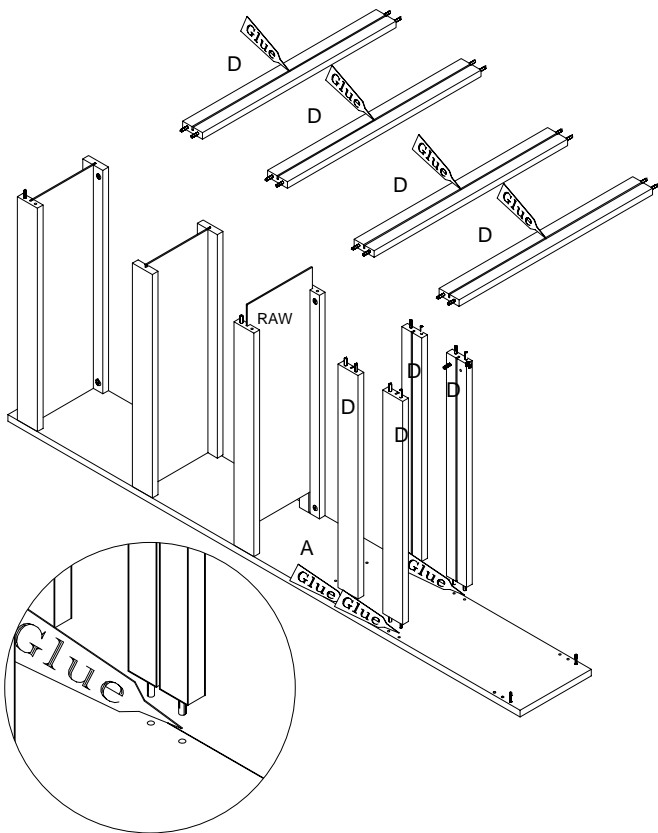
Apply coat of glue in the groove of two parts D.



Turn camlocks clockwise using flat (preferred) or phillips screwdriver until full stop (slightly over  $\frac{1}{2}$  a turn to lock the bolt)

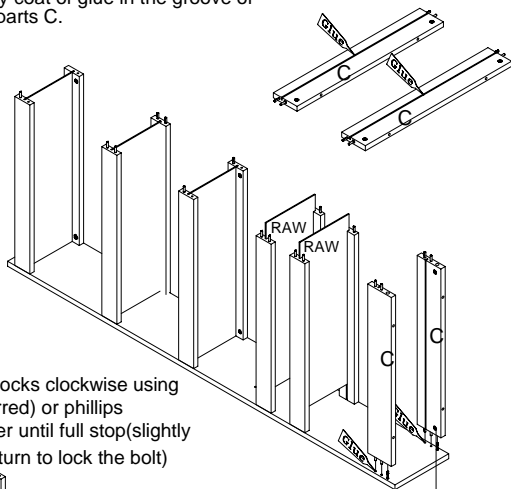
**5**

Apply coat of glue in the groove of four parts D.

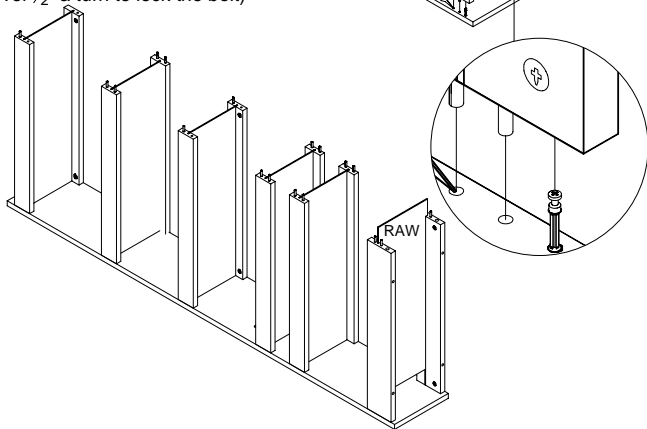


**6**

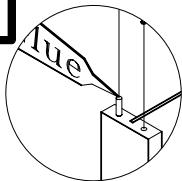
Apply coat of glue in the groove of two parts C.



Turn camlocks clockwise using flat (preferred) or phillips screwdriver until full stop (slightly over  $\frac{1}{2}$  a turn to lock the bolt)

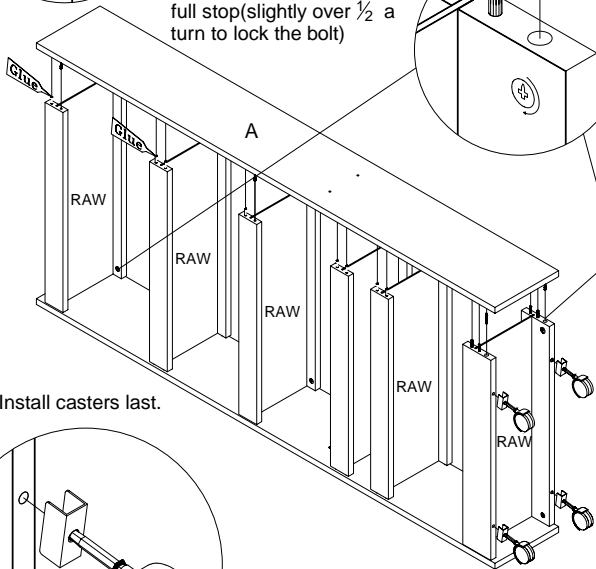
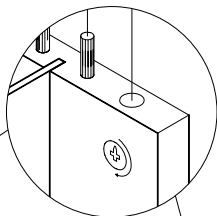




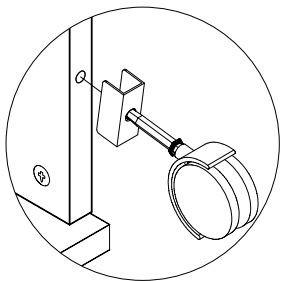
**7**

Align the other side A over the assembly, press down to make sure you leave no gap between any connecting parts then lock all camlocks.

Turn camlocks clockwise using flat (preferred) or phillips screwdriver until full stop (slightly over  $\frac{1}{2}$  a turn to lock the bolt)



Install casters last.



8

Allow at least two hours for glue to set before you start loading or using the unit

**SAFETY LOADING INSTRUCTION.** Start loading the lower shelves first. Keep heavy items on the bottom shelves in order to maintain stability.

