

**SELECTRONIC™ FloWise®  
DUAL FLUSH TOILET FLUSH VALVE**  
BATTERY POWERED, SENSOR OPERATED, 1.28/1.1 GPF



**GENERAL DESCRIPTION:**

Exposed, Battery Powered, Sensor Operated Selectronic™ Dual Flush Water Closet Flush Valve for floor-mounted or wall-hung 1-1/2" top spud bowls.

Inlet includes 1" I.P.S. angle stop with back-flow protection, vandal-resistant cap, sweat solder kit, cover tube and wall flange.

Outlet includes 1-1/2" vacuum breaker with adjustable tailpiece, spud coupling and flange.

**PRODUCT FEATURES:**

- Light flush (1.1 gpf: 30% water savings) if user is in detection zone for 60 seconds or less.
- Standard flush (1.28 gpf: 20% water savings) if user is in detection zone for more than 60 seconds.
- Electronic flush valve with Selectronic™ proximity system for "Hands Free" operation.
- Self-Cleaning Piston with integral wiper spring prevents clogging and reduces maintenance.
- Piston operation delivers superior flush accuracy and repeatability.
- Fully mechanical Manual Override Button can operate for an unlimited time without power.
- Valve remains closed and does not need to be reset after loss of power or water pressure.
- Sanitary Flush: Valve automatically flushes after 24 hours of non-use to clean fixture & maintain trap seal.
- Sensor & electronic controls are fully enclosed and water resistant.
- Range can be adjusted manually or with optional remote control.
- Chemical resistant EPDM seals are unaffected by chloramines & other chemicals.
- Adjustable tailpiece.
- Factory-installed CR-P2 lithium battery included.
- No external volume adjustment.
- Can be installed left or right-handed.

**MODEL NUMBER:**

- ❑ **6065.721.002** Dual Flush Toilet Flush Valve for 11-1/2" Supply C\L to top of bowl, 1.28/1.1 gpf
- ❑ **6065.521.002** Dual Flush Retrofit for Existing Flush Valves, 1.28/1.1 gpf. Replaces industry standard manual and electronic valves. Does not include the vacuum breaker assembly, angle stop or sweat solder kit.

**OPERATING PRESSURE:**

Overall Range: 20-125 psi\*\*

Recommended: 25 psi (flowing)-80 psi (static)

**FLOW REQUIREMENT:**

25gpm (94.6 L/min.)

\*\* Water pressure over 80 psi is not recommended for most plumbing fixtures.

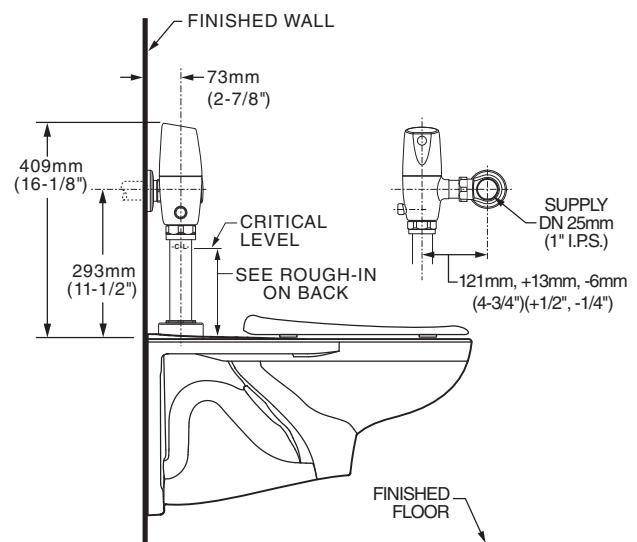
**BATTERY LIFE:**

200,000 cycles (4 years @ 4000 cycles per month)

**ACCESSORIES:**

- Cast wall flanges (1" & 1-1/2")
- Solid ring pipe supports (2-1/2" & 6" C-E)
- Split ring pipe supports (2-1/2" & 6" C-E)

**TYPICAL WATER CLOSET INSTALLATION:  
AFWALL™ TOILET SHOWN**



**RECOMMENDED SPECIFICATION:**

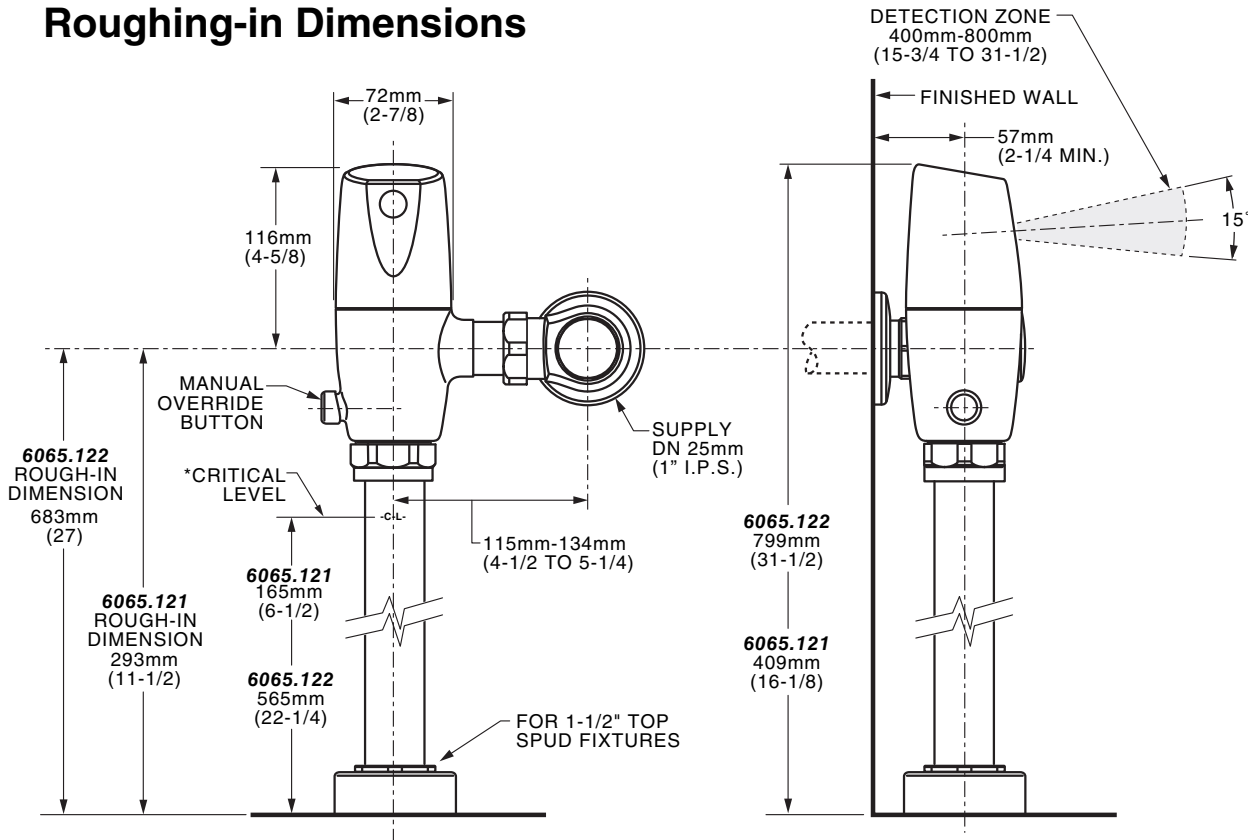
Electronic proximity infrared sensor activated toilet flush valve shall feature self-cleaning piston valve with integral wiper spring in refill orifice to prevent clogging. Flush volume is determined by amount of time user is in detection zone. 60 seconds or less: 1.1 gpf/4.2 Lpf. More than 60 seconds: 1.28 gpf/4.8 Lpf. Includes a fully mechanical manual over-ride that can provide a complete flush without battery power. Includes cast brass valve body and metal cover with chrome finish, vandal resistant stop cap and lithium battery. Angle stop with back-flow protection and vacuum breaker included. Flush valve shall be American Standard Model # 6065\_21.002.

**SELECTRONIC™ FloWise®  
DUAL FLUSH TOILET FLUSH VALVE  
BATTERY POWERED, SENSOR OPERATED, 1.28/1.1 GPF**

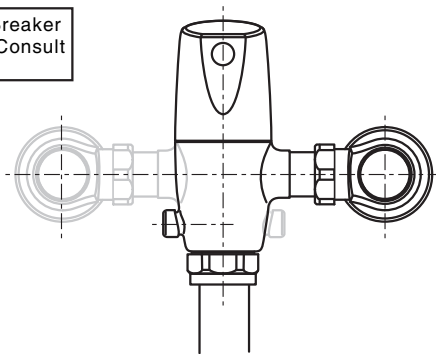
**LISTINGS:**

- ASSE 1037
- ANSI/ASME A112.19.2
- ADA Compliant

**Roughing-in Dimensions**



\*Note: The Critical Line (-C-L-) on Vacuum Breaker must typically be 6" (152mm) above fixture. Consult Codes for details.



**Right or Left Hand Installation**

This flushometer valve is intended to be used with listed/certified 1.28 gpf/1.1 gpf bowls only.

 MEETS THE AMERICANS WITH DISABILITIES ACT GUIDELINES AND ANSI A117.1 REQUIREMENTS FOR ACCESSIBLE AND USABLE BUILDING FACILITIES-CHECK LOCAL CODES