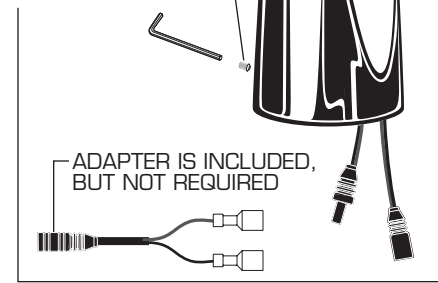


SELECTRONIC™ PROXIMITY URINAL FLUSH VALVE 0.25, 0.5 & 1.0 GPF (After June 2013)

MODEL NUMBERS

6063.025	6063.051
6063.510	6063.101
6063.505	7093.051
6062.601	

A917376-0070A
COVER SET SCREW



ADAPTER IS INCLUDED,
BUT NOT REQUIRED

M962665-0020300A
COVER ASSEMBLY FOR
FLUSH VALVE WITH 0.25 gpf
(BATTERY INCLUDED)

M962665-0020500A
COVER ASSEMBLY FOR
FLUSH VALVE WITH 0.5 gpf
(BATTERY INCLUDED)

M962665-0021000A
COVER ASSEMBLY FOR
FLUSH VALVE WITH 1.0 gpf
(BATTERY INCLUDED)

A923654-0070A
BATTERY 6VCR-P2



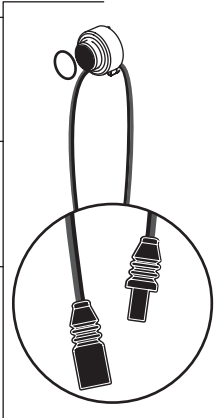
M950514-0070A
BATTERY HOLDER



M950319-0070300A
SENSOR ASSEMBLY
W/MTG. KIT.
FOR FLUSH VALVE
WITH 0.25 gpf

M950319-0070500A
SENSOR ASSEMBLY
W/MTG. KIT.
FOR FLUSH VALVE
WITH 0.5 gpf

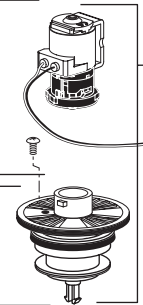
M950319-0071000A
SENSOR ASSEMBLY
W/MTG. KIT.
FOR FLUSH VALVE
WITH 1.0 gpf



A906680-0070A
BONNET NUT



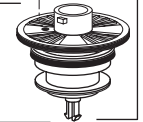
M964302-0070A
SOLENOID ASSEMBLY



M964311-0070A
SOLENOID & PISTON
SUBASSEMBLY



M962907-0070A
PISTON ASSEMBLY



A912809-0070A
O-RING



OPTIONAL ADJUSTABLE TAILPIECE
(Purchased Separately)

M962836-0020A (8-1/4" to 9-1/4" Rough-in)

M962835-0020A (7-1/4" to 8-1/4" Rough-in)

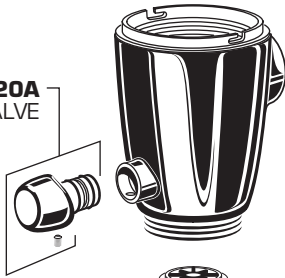
M962834-0020A (6-1/4" to 7-1/4" Rough-in)

M962833-0020A (5-1/4" to 6-1/4" Rough-in)

M962920-0020A
ADJUSTABLE TAILPIECE
(4-1/4" to 5-1/4" Rough-in)



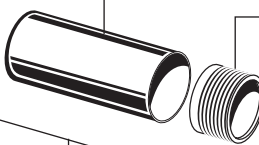
M962666-0020A
MANUAL VALVE



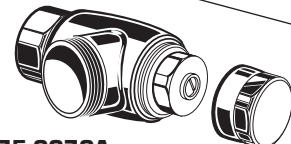
M962928-0020A
STAMPED FLANGE



M962927-0020A
COVER TUBE



M962926-0070A
SWEAT ADAPTER



A955056-0020A
1" SUPPLY STOP
FOR (6062.601)

M955058-0020A
3/4" SUPPLY STOP

M962801-0070A
FLOW REGULATOR

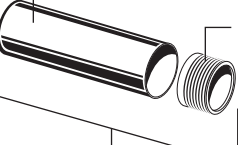


A955057-0020A
1" INLET PIPE ASSEMBLY
FOR (6062.601)

M964074-0020A
STAMPED FLANGE



M964076-0020A
COVER TUBE



M964075-0070A
SWEAT ADAPTER

M964059-0020A
CAP (1" SUPPLY STOP)

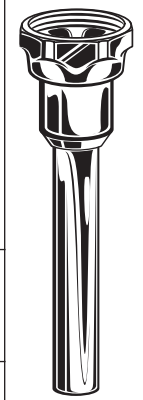
M964403-0020A
CAP (3/4" SUPPLY STOP)

M964402-0070A
VACUUM BREAKER KIT

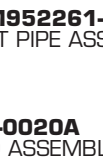


M952263-0020A
3/4" VACUUM
BREAKER ASSEMBLY

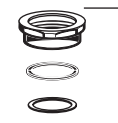
M955062-0020A
1-1/4" VACUUM
BREAKER ASSEMBLY
FOR (6062.601)



M952261-0020A
3/4" INLET PIPE ASSEMBLY



M952262-0020A
3/4" SPUD ASSEMBLY



M952208-0020A
1-1/4" SPUD ASSEMBLY
FOR (6062.601)



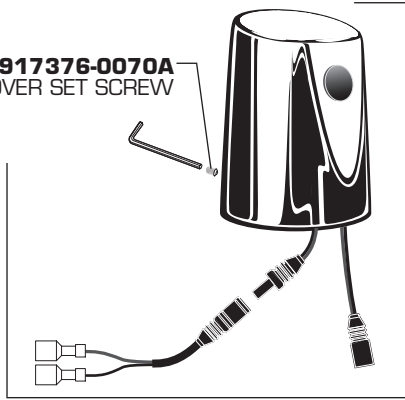
HOT LINE FOR HELP
For toll-free information and answers to your questions, call:
1 (800) 442-1902
Weekdays 8:00 a.m. to 6:00 p.m. EST
IN MEXICO 01-800-839-1200
IN CANADA 1-800-387-0369 (TORONTO 1-905-306-1093)
Weekdays 8:00 a.m. to 7:00 p.m. EST
Product names listed herein are trademarks of AS America, Inc.

SELECTRONIC™ PROXIMITY URINAL FLUSH VALVE 0.25, 0.5 & 1.0 GPF (Before June 2013)

MODEL NUMBERS

6063.510	6063.051
6063.505	6063.101
6062.601	7093.051

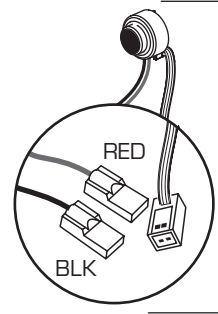
A917376-0070A
COVER SET SCREW



M962665-0020500A
COVER ASSEMBLY FOR
FLUSH VALVE WITH 0.5 gpf
(BATTERY INCLUDED)

M962665-0021000A
COVER ASSEMBLY FOR
FLUSH VALVE WITH 1.0 gpf
(BATTERY INCLUDED)

A923654-0070A
BATTERY 6VCR-P2



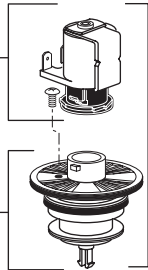
A950223-0070500A
SENSOR ASSEMBLY
W/MTG. KIT.
FOR FLUSH VALVE
WITH 0.5 gpf

A950223-0071000A
SENSOR ASSEMBLY
W/MTG. KIT.
FOR FLUSH VALVE
WITH 1.0 gpf

A906680-0070A
BONNET NUT

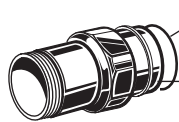


M962664-0070A
SOLENOID ASSEMBLY



M962955-0070A
SOLENOID & PISTON
SUBASSEMBLY

M962907-0070A
PISTON ASSEMBLY



A912809-0070A
O-RING

OPTIONAL ADJUSTABLE TAILPIECE
(Purchased Separately)

- M962836-0020A** (8-1/4" to 9-1/4" Rough-in)
- M962835-0020A** (7-1/4" to 8-1/4" Rough-in)
- M962834-0020A** (6-1/4" to 7-1/4" Rough-in)
- M962833-0020A** (5-1/4" to 6-1/4" Rough-in)



M962920-0020A
ADJUSTABLE TAILPIECE
(4-1/4" to 5-1/4" Rough-in)

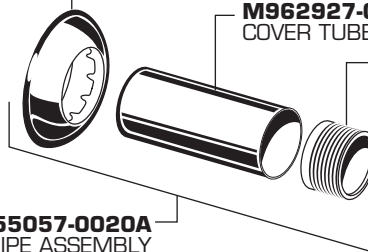
M962666-0020A
MANUAL VALVE



M962928-0020A
STAMPED FLANGE

M962927-0020A
COVER TUBE

M962926-0070A
SWEAT ADAPTER



A955057-0020A
1" INLET PIPE ASSEMBLY
FOR (6062.601)

A955056-0020A
1" SUPPLY STOP
FOR (6062.601)

M955058-0020A
3/4" SUPPLY STOP

M962801-0070A
FLOW REGULATOR

M964402-0070A
VACUUM BREAKER KIT



M952263-0020A
3/4" VACUUM
BREAKER ASSEMBLY

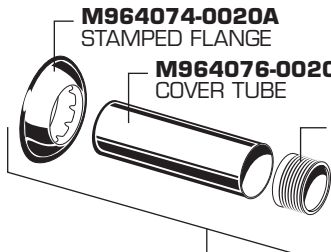
M955062-0020A
1-1/4" VACUUM
BREAKER ASSEMBLY
FOR (6062.601)



M964074-0020A
STAMPED FLANGE

M964076-0020A
COVER TUBE

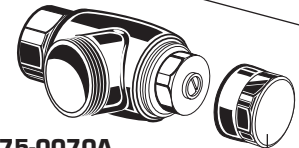
M964075-0070A
SWEAT ADAPTER



M952261-0020A
3/4" INLET PIPE ASSEMBLY

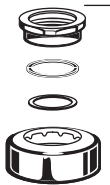
M964059-0020A
CAP (1" SUPPLY STOP)

M964403-0020A
CAP (3/4" SUPPLY STOP)



M952262-0020A
3/4" SPUD ASSEMBLY

M952208-0020A
1-1/4" SPUD ASSEMBLY
FOR (6062.601)



HOT LINE FOR HELP
For toll-free information and answers to your questions, call:
1 (800) 442-1902
Weekdays 8:00 a.m. to 6:00 p.m. EST
IN MEXICO 01-800-839-1200
IN CANADA 1-800-387-0369 (TORONTO 1-905-306-1093)
Weekdays 8:00 a.m. to 7:00 p.m. EST

Product names listed herein are trademarks of AS America, Inc.