

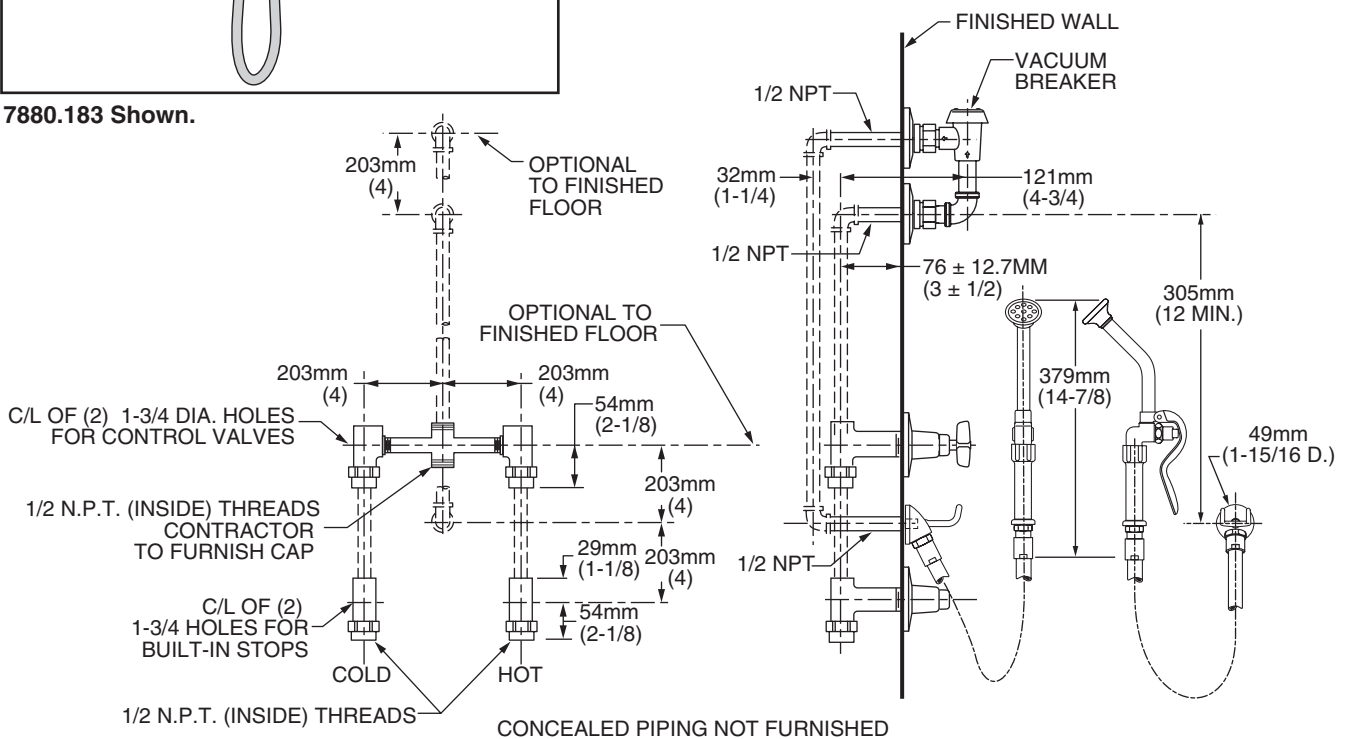
7880.183 Shown.

MODEL NUMBER:

□ **7880.183 Bedpan Cleanser Assembly**

Includes Component parts:

- 6024.000 By-Pass Valve with Heritage Cross Handles
- 7001.000 In wall supply w/009426 Metal Cross Handle
- 7866.115 Nozzle with hook
- 7837.124 Atmospheric vacuum breaker
- Self-closing handle



GENERAL DESCRIPTION:

Cast brass construction throughout. By-pass valve on 8" centers. Amaris washerless ceramic disc valve cartridge. Heritage Cross Handles. Screwdriver stops. Single supply nozzle with built-in wall mounted hook for spray end. 4' rubber hose. 10" spray end with self-closing hand valve. Atmospheric vacuum breaker with top outlet to provide back flow protection.

PRODUCT FEATURES:

Brass Construction: Durable - excellent in high use applications.

Ceramic Disc Valving: Assures a lifetime of drip free performance.

Supply Nozzle: Cast brass with built-in hook to hold spray end. Wall mounted.

Vacuum Breaker: Brass housing, ells and nipples with back flow preventer.

Polished Chrome Finish: Excellent in commercial applications.

SUGGESTED SPECIFICATION

Bedpan Cleanser Assembly shall feature a wall mounted single inlet supply nozzle with built-in hook. Shall feature a by-pass valve on 8" centers and Amaris washerless ceramic disc valving and screwdriver stops. Back flow protection to be provided by vacuum breaker with top outlet. Cast brass construction throughout. Fitting shall be American Standard Model# 7880.183.002.