



PRINCETON™ RECESS BATH

Americast® brand engineered material

- 2391.202** Right Hand Outlet
- 2391.202TC** Same as above w/tub cover
- 2390.202** Left Hand Outlet
- 2390.202TC** Same as above w/tub cover
 - Acid resistant porcelain finish
 - Recess bath with integral apron and tiling flange
 - Integral lumbar support
 - Beveled headrest
 - Full slip-resistant coverage
 - End drain outlet



**PRINCETON™ RECESS BATH
for Above Floor Rough Installation**

- 2392.202** Left Hand Outlet for above floor installation
- 2392.202TC** Same as above w/tub cover
- 2393.202** Right Hand Outlet for above floor installation
- 2393.202TC** Same as above w/tub cover

To Be Specified - Required:

- Color:
- Bath Faucet*:
- Faucet Finish:
- Drain:
- Drain Finish:

*See faucet section for additional models available

Nominal Dimensions:

1524 x 762 x 356mm
(445mm for above floor installation)
60" x 30" x 14"
(17-1/2" for above floor installation)

Bathing Well Dimensions:

1423 x 635 x 337mm
(56" x 25" x 13-1/4")

**Compliance Certifications -
Meets or Exceeds the Following Specifications:**

- ASME A112.19.4 for Americast Plumbing Fixtures
- ASTM F-462 for Slip-resistant Bathing Facilities
- ANSI Z124.1 Ignition Test
- ASTM E162 for Flammability
- NFPA 258 for Smoke Density

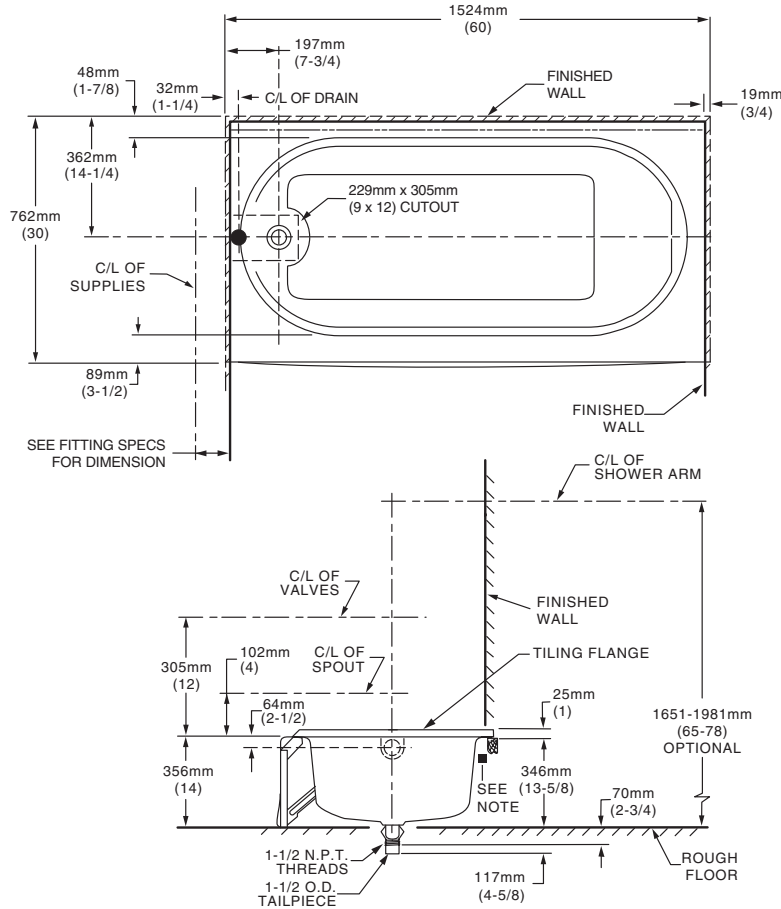
Americast® brand engineered material is a composition of porcelain bonded to enameling grade metal, bonded to a patented structural composite.



MEETS THE AMERICANS WITH DISABILITIES ACT GUIDELINES
AND ANSI A117.1 REQUIREMENTS FOR ACCESSIBLE AND
USEABLE BUILDING FACILITIES-CHECK LOCAL CODES.
INSTALL WITH SEAT AT HEAD END.

SEE REVERSE FOR ROUGHING-IN DIMENSIONS
AND PRODUCT SPECIFICATIONS

NOTE: Roughing-in shown for 2390/2391 only. Refer to installation instruction for 2392/2393 above floor installation.

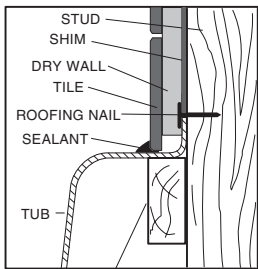


| GENERAL SPECIFICATIONS FOR 2390/2391 BATHING POOL | |
|---|---------------------------------------|
| INSTALLED SIZE | 60 x 30 x 14 In. (1524 x 762 x 356mm) |
| WEIGHT | 110 Lbs. (50 Kg.) |
| WEIGHT w/WATER | 460 Lbs. (209 Kg.) |
| GAL. TO OVERFLOW | 42 Gal. (159 L) |
| BATHING WELL AT SUMP | 42 x 19 In. (1067 x 483mm) |
| BATHING WELL AT RIM | 56 x 25 In. (1423 x 635mm) |
| WATER DEPTH TO OVERFLOW | 9-1/2 In. (241mm) |
| FLOOR LOADING (PROJECTED AREA) | 37 Lbs./Sq.Ft. (175 Kgs./Sq.m) |
| PTS. | 6.2 |
| CUBE (FT ³) | 18.1 |

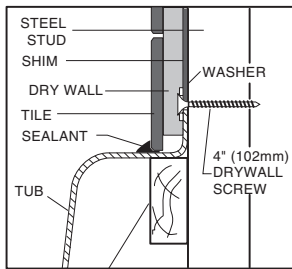
| GENERAL SPECIFICATIONS FOR 2392/2393 BATHING POOL | |
|---|---|
| INSTALLED SIZE | 60 x 30 x 17-1/2 In. (1524 x 762 x 445mm) |
| WEIGHT | 110 Lbs. (54 Kg.) |
| WEIGHT w/WATER | 469 Lbs. (213 Kg.) |
| GAL. TO OVERFLOW | 42 Gal. (159 L) |
| BATHING WELL AT SUMP | 42 x 19 In. (1067 x 483mm) |
| BATHING WELL AT RIM | 56 x 25 In. (1423 x 635mm) |
| WATER DEPTH TO OVERFLOW | 9-1/2 In. (241mm) |
| FLOOR LOADING (PROJECTED AREA) | 38 Lbs./Sq.Ft. (182 Kgs./Sq.m) |
| PTS. | 7.4 |
| CUBE (FT ³) | 21.2 |

Below is shown typical cross sections of the tub rim showing typical wall constructions.

WOOD STUDS



STEEL STUDS



NOTES:

LEFT HAND OUTLET SHOWN, RIGHT HAND REVERSE DIMENSIONS. (2391.202).

SHOWN WITH POP-UP C.D. & O.

REFER TO INSTALLATION INSTRUCTIONS SUPPLIED WITH FITTING.

CONCEALED PIPING NOT FURNISHED.

FITTINGS NOT INCLUDED AND MUST BE ORDERED SEPARATELY.

PROVIDE SUITABLE REINFORCEMENT FOR ALL WALL SUPPORTS.

■ REFER TO INSTALLATION INSTRUCTIONS SUPPLIED WITH BATH.

IMPORTANT: Dimensions of fixtures are nominal and may vary within the range of tolerances established by ANSI Standard A112.19.4 These measurements are subject to change or cancellation. No responsibility is assumed for use of superseded or voided leaflet.