

PRINCETON RECESS BATH

Americast® brand engineered material

- 2391.202** Right Hand Outlet
- 2391.202TC** Same as above w/tub cover
- 2390.202** Left Hand Outlet
- 2390.202TC** Same as above w/tub cover
 - Acid resistant porcelain finish
 - Recess bath with integral apron and tiling flange
 - Integral lumbar support
 - Beveled headrest
 - Full slip-resistant coverage
 - End drain outlet

**PRINCETON RECESS BATH for Above Floor
Rough Installation**

- 2392.202** Left Hand Outlet for above floor installation
- 2392.202TC** Same as above w/tub cover
- 2393.202** Right Hand Outlet for above floor installation
- 2393.202TC** Same as above w/tub cover

Nominal Dimensions: 1524 x 762 x 356mm
(445mm for above floor installation)
60" x 30" x 14" (17-1/2" for above floor installation)

Bathing Well Dimensions: 1423 x 635 x 337mm
(56" x 25" x 13-1/4")

Americast® brand engineered material is a composition of porcelain bonded to enameling grade metal, bonded to a patented structural composite.

Compliance Certifications -

Meets or Exceeds the Following Specifications:

- ASME A112.19.4 for Americast Plumbing Fixtures
- ASTM F-462 for Slip-resistant Bathing Facilities
- ANSI Z124.1 Ignition Test
- ASTM E162 for Flammability
- NFPA 258 for Smoke Density



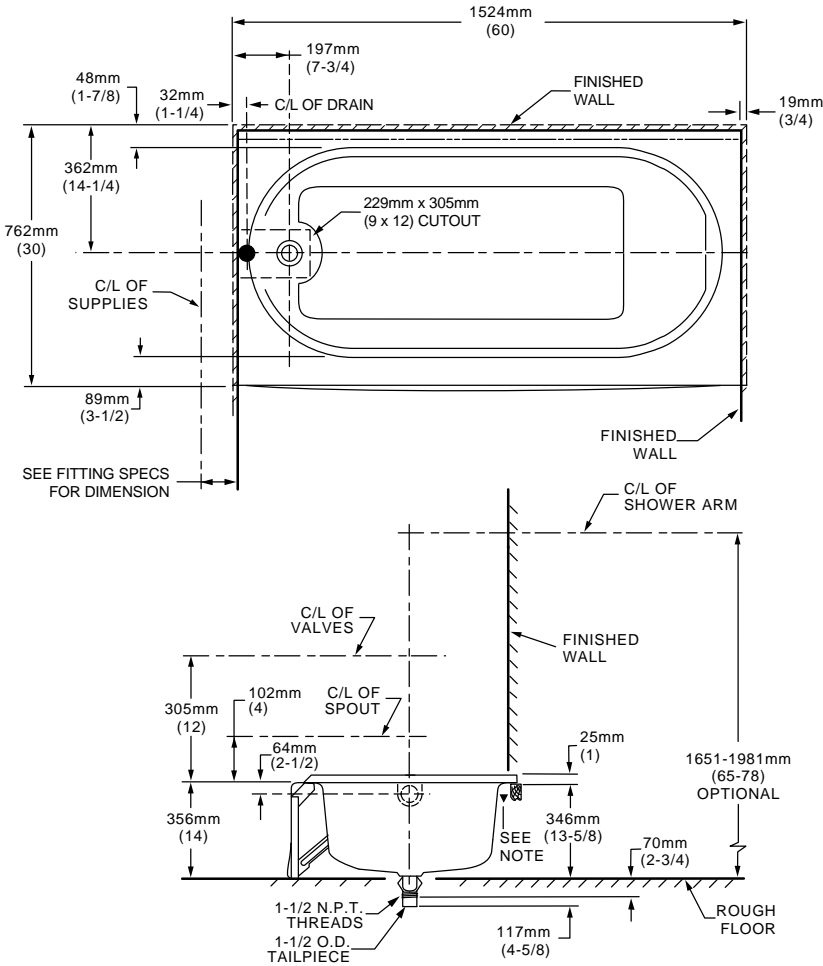
NOTE: Roughing-in dimensions shown on reverse side of page.

To Be Specified

- Color:
- Bath Faucet*:
- Faucet Finish:
- Drain:
- Drain Finish:

* See faucet section for additional models available

NOTE: Roughing-in shown for 2390/2391 only. Refer to installation instruction for 2392/2393 above-floor installation.



GENERAL SPECIFICATIONS FOR 2390/2391 BATHING POOL	
INSTALLED SIZE	1524 x 762 x 356mm (60 x 30 x 14 In.)
WEIGHT	50 Kg. (111 Lbs.)
WEIGHT w/WATER	207 Kg. (461 Lbs.)
GAL. TO OVERFLOW	159 L (42 Gal.)
BATHING WELL AT SUMP	1067 x 483mm (42 x 19 In.)
BATHING WELL AT RIM	1423 x 635mm (56 x 25 In.)
WATER DEPTH TO OVERFLOW	241mm (9-1/2 In.)
FLOOR LOADING (PROJECTED AREA)	179 Kgs./Sq.m (37 Lbs./Sq.Ft.)
PTS.	6.2
CUBE (FT³)	17.9

GENERAL SPECIFICATIONS FOR 2392/2393 BATHING POOL	
INSTALLED SIZE	1524 x 762 x 445mm (60 x 30 x 17-1/2 In.)
WEIGHT	54 Kg. (119 Lbs.)
WEIGHT w/WATER	211 Kg. (469 Lbs.)
GAL. TO OVERFLOW	159 L (42 Gal.)
BATHING WELL AT SUMP	1067 x 483mm (42 x 19 In.)
BATHING WELL AT RIM	1423 x 635mm (56 x 25 In.)
WATER DEPTH TO OVERFLOW	241mm (9-1/2 In.)
FLOOR LOADING (PROJECTED AREA)	182 Kgs./Sq.m (38 Lbs./Sq.Ft.)
PTS.	6.2
CUBE (FT³)	17.9

- NOTES:** LEFT HAND OUTLET SHOWN, RIGHT HAND REVERSE DIMENSIONS. (2391.202).
 SHOWN WITH POP-UP C.D. & O.
 REFER TO INSTALLATION INSTRUCTIONS SUPPLIED WITH FITTING.
 CONCEALED PIPING NOT FURNISHED.
 FITTINGS NOT INCLUDED AND MUST BE ORDERED SEPARATELY.
 PROVIDE SUITABLE REINFORCEMENT FOR ALL WALL SUPPORTS.
 ▼ REFER TO INSTALLATION INSTRUCTIONS SUPPLIED WITH BATH.

IMPORTANT: Dimensions of fixtures are nominal and may vary within the range of tolerances established by ANSI Standard A112.19.4
 These measurements are subject to change or cancellation. No responsibility is assumed for use of superseded or voided leaflet.

PRINCETON RECESS BATH W/ INTEGRAL OVERFLOW

Americast® brand engineered material

- 2390.202 ICH** (Chrome Trim)
Left Hand Outlet
- 2390.202 ICHTC** Same as above
with Tub Cover
- 2391.202 ICH** (Chrome Trim)
Right Hand Outlet
- 2391.202 ICHTC** Same as above
with Tub Cover
- 2390.202 IPB** (Polished Brass Trim)
Left Hand Outlet
- 2390.202 IPBTC** Same as above
with Tub Cover
- 2391.202 IPB** (Polished Brass Trim)
Right Hand Outlet
- 2391.202 IPBTC** Same as above
with Tub Cover

- Lift and turn drain stopper assembly included with bath
- Escutcheon included and installed on bath
- Acid resistant porcelain finish
- Recess bath with integral apron and tiling flange
- Integral lumbar support
- Beveled headrest
- Full slip-resistant coverage
- End drain outlet

Nominal Dimensions: 1524 x 762 x 356mm
(60" x 30" x 14")

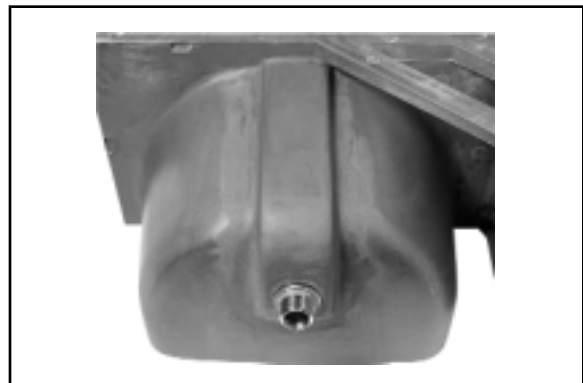
Bathing Well Dimensions: 1423 x 635 x 337mm
(56" x 25" x 13-1/4")

Americast® brand engineered material is a composition of porcelain bonded to enameling grade metal, bonded to a patented structural composite.

- Compliance Certifications - Meets or Exceeds the Following Specifications:**
- ASME A112.19.4 for Americast Plumbing Fixtures
 - ASTM F-462 for Slip-resistant Bathing Facilities
 - ANSI Z124.1 Ignition Test
 - ASTM E162 for Flammability
 - NFPA 258 for Smoke Density



NOTE: Roughing-in dimensions shown on reverse side of page.



Photograph details integral overflow and drain assembly. Drain assembly included with bath.

To Be Specified

- Color:
- Bath Faucet*:
- Faucet Finish:

* See faucet section for models available

SPS 2390 ICH /2391 ICH /2390 IPB /2391 IPB

**PRINCETON RECESS BATH W/ INTEGRAL
OVERFLOW for Above Floor Rough Installation**

Americast® brand engineered material

- 2392.202 ICH** (Chrome Trim) Left Hand
Outlet for above floor installation
- 2392.202 ICHTC** Same as above
with Tub Cover
- 2393.202 ICH** (Chrome Trim) Right Hand
Outlet for above floor installation
- 2393.202 ICHTC** Same as above
with Tub Cover
- 2392.202 ICH** (Polished Brass Trim)
Left Hand Outlet
- 2392.202 ICHTC** Same as above
with Tub Cover
- 2393.202 ICH** (Polished Brass Trim)
Right Hand Outlet
- 2393.202 ICHTC** Same as above
with Tub Cove

- Lift and turn drain stopper assembly
included with bath
- Escutcheon included and installed on bath
- Acid resistant porcelain finish
- Recess bath with integral apron and tiling
flange
- Integral lumbar support
- Beveled headrest
- Full slip-resistant coverage
- End drain outlet

Nominal Dimensions: 1524 x 762 x 445mm
(60" x 30" x 17-1/2")

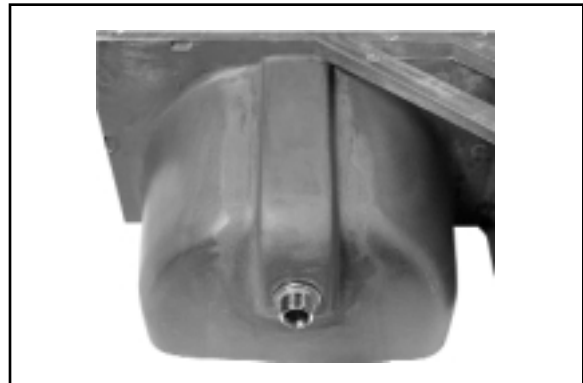
Bathing Well Dimensions: 1423 x 635 x 337mm
(56" x 25" x 13-1/4")

Americast® brand engineered material is a
composition of porcelain bonded to enameling
grade metal, bonded to a patented structural
composite.

- Compliance Certifications -
Meets or Exceeds the Following Specifications:**
- ASME A112.19.4 for Americast Plumbing Fixtures
 - ASTM F-462 for Slip-resistant Bathing Facilities
 - ANSI Z124.1 Ignition Test
 - ASTM E162 for Flammability
 - NFPA 258 for Smoke Density



NOTE: Roughing-in dimensions shown on reverse side of
page.

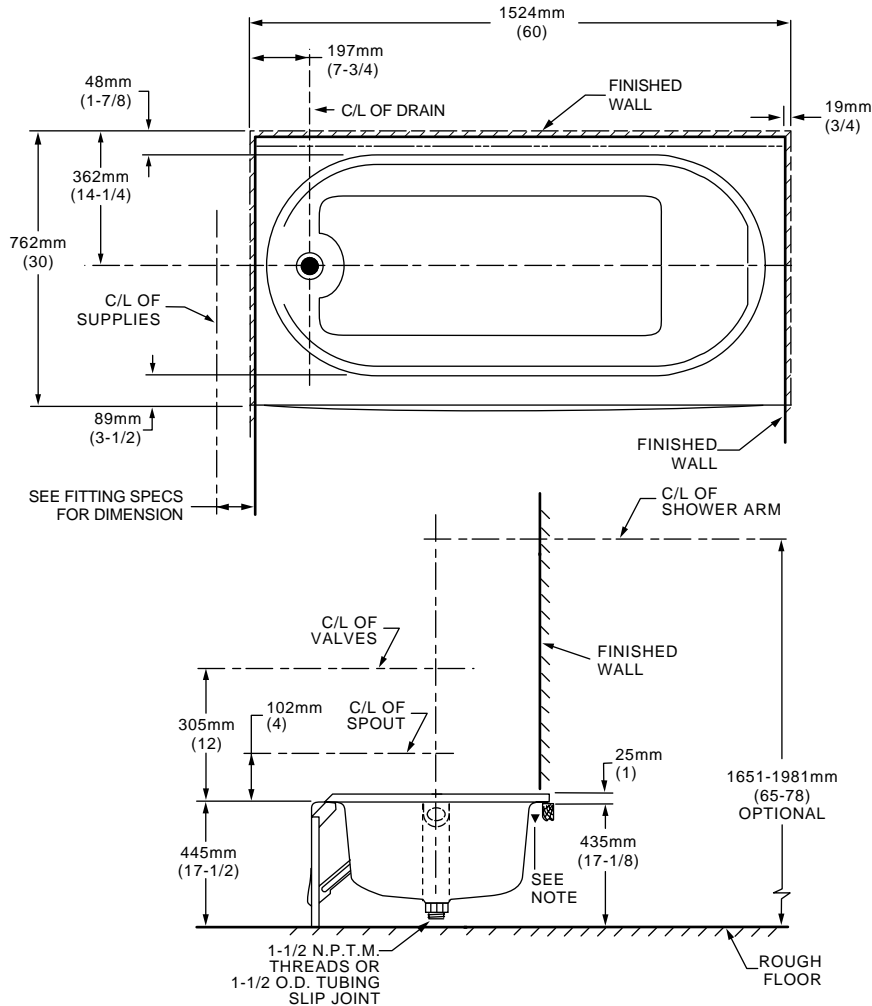


Photograph details integral overflow and drain
assembly. Drain assembly included with bath.

To Be Specified

- Color:
- Bath Faucet*:
- Faucet Finish:

* See faucet section for models available



GENERAL SPECIFICATIONS FOR 2392/2393ICH BATHING POOL	
INSTALLED SIZE	60 x 30 x 17-1/2 In. (1524 x 762 x 445mm)
WEIGHT	121 Lbs. (55 Kg.)
WEIGHT w/WATER	471 Lbs. (214 Kg.)
GAL. TO OVERFLOW	42 Gal. (159 L)
BATHING WELL AT SUMP	42 x 19 In. (1067 x 483mm)
BATHING WELL AT RIM	56 x 25 In. (1423 x 635mm)
WATER DEPTH TO OVERFLOW	9-1/2 In. (241mm)
FLOOR LOADING (PROJECTED AREA)	38 Lbs./Sq.Ft. (182 Kgs./Sq.m)
PTS.	7.4
CUBE (FT³)	21.2

- NOTES:** LEFT HAND OUTLET SHOWN, RIGHT HAND REVERSE DIMENSIONS. (2393.202.ICH).
 DRAIN AND OVERFLOW ESCUTCHEON INCLUDED WITH BATH. REFER TO INSTALLATION INSTRUCTIONS SUPPLIED WITH BATH FOR DRAIN INSTALLATION.
 BATH FAUCET NOT INCLUDED AND MUST BE ORDERED SEPARATELY.
 REFER TO INSTALLATION INSTRUCTIONS SUPPLIED WITH FITTING.
 CONCEALED PIPING NOT FURNISHED.
 PROVIDE SUITABLE REINFORCEMENT FOR ALL WALL SUPPORTS.
 ▼ REFER TO INSTALLATION INSTRUCTIONS SUPPLIED WITH BATH.

IMPORTANT: Dimensions of fixtures are nominal and may vary within the range of tolerances established by ANSI Standard A112.19.4
 These measurements are subject to change or cancellation. No responsibility is assumed for use of superseded or voided leaflet.