



**MODEL NUMBER:**

- **AC POWERED; single inlet**
  - 6058.105 with cast spout, 0.5 GPM vandal resistant aerator.
  - 6058.102 with cast spout, 2.2 GPM vandal resistant aerator.
  - 6058.103 with cast spout, 2.2 GPM vandal resistant laminar.
- **OPTIONAL 4" or 8" Deck plates**
  - 605P.400 4" brass deck plate with 1/4" fixation studs and quick spin nuts. (6-1/8" x 2-1/8" x 1/2")
  - 605P.800 8" brass deck plate with 1/4" fixation studs and quick spin nuts. (10-1/8" x 2-3/8" x 1/2")

**GENERAL DESCRIPTION:**

Electronic faucet with proximity operation. Colored LED's signal temperature change mode. Vandal resistant solid brass construction single post mounting. Operates on AC permanent power. Water pressure range from 20 to 125 psi. In-line strainer for solenoid is integral. Single inlet 3/8" compression, built-in checks, and flexible stainless steel 15" reach inlet hose for spout connection.

**PRODUCT FEATURES:**

**Vandal-Resistant Brass Body:** Durable - Excellent in high use applications.

**Power Options:**

- **Plug-In - Integral** low voltage transformer (115 VAC supply) with 5 foot power supply.

**Easy and flexible installation:**

Single post mounting with optional 4" and 8" Deck plate. Water resistant solenoid enclosure mounts to wall.

**Integrated; easy service Strainer:**

Patented integrated strainer enclosed in removable debris cup protects the solenoid valve and aerator from debris. Perforated stainless steel strainer is low maintenance and can be easily accessed.

**Temperature Mixing:**

The water temperature gradually decreases/increases to a desired setting through a cyclic mixing valve. After usage, the faucet reverts back to a pre-setting temperature.

**End Device:**

- Choice of 2.2 GPM 8.3 L/min Vandal resistant aerator or
- 0.5 GPM 1.9 L/min Vandal resistant aerator or
- 2.2 GPM 8.3 L/min Vandal resistant laminar.

**CODES AND STANDARDS:**

These products meet or exceed the following coded standards:

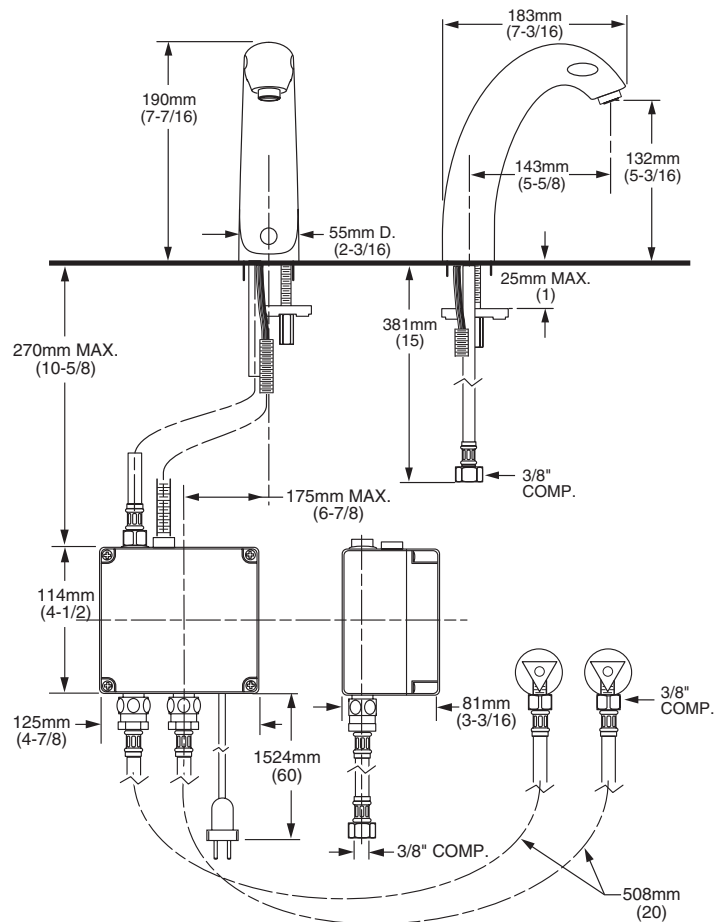
ANSI A117.1

ASME A112.18.1

CSA B 125



ADA Compliant



**RECOMMENDED SPECIFICATION**

Electronic Proximity Lavatory shall feature touch-free temperature control, vandal resistant all brass body with single inlet, built-in check valve, and in-line strainer. Shall also feature a low energy use electronically operated solenoid valve and microprocessor controlled proximity sensors. Shall meet ANSI A112.18.1M and ANSI 117.1 codes. Fitting shall be American Standard Model # 6058.\_\_\_\_\_.