

**PRINCETON RECESS BATH W/ LUXURY LEDGE**

Americast® brand engineered material

- 2395.202** Right Hand Outlet
- 2395.202TC** Same as above w/tub cover
- 2394.202** Left Hand Outlet
- 2394.202TC** Same as above w/tub cover
  - Acid resistant porcelain finish
  - Recess bath with integral apron and tiling flange
  - Integral lumbar support
  - Extra wide ledge for placement of toiletries
  - Beveled headrest
  - Full slip-resistant coverage
  - End drain outlet

**PRINCETON RECESS BATH W/ LUXURY LEDGE  
for Above Floor Rough Installations**

- 2396.202** Left Hand Outlet for above floor installation
- 2396.202TC** Same as above w/tub cover
- 2397.202** Right Hand Outlet for above floor installation
- 2397.202TC** Same as above w/tub cover

Nominal Dimensions: 1524 x 864 x 356mm  
(445mm for above floor installation)  
60" x 34" x 14" (17-1/2" for above floor installation )

Bathing Well Dimensions: 1423 x 635 x 337mm  
(56" x 25" x 13-1/4")

Americast® brand engineered material is a composition of porcelain bonded to enameling grade metal, bonded to a patented structural composite.

**Compliance Certifications -**

**Meets or Exceeds the Following Specifications:**

- ASME A112.19.4 for Americast Plumbing Fixtures
- ASTM F-462 for Slip-resistant Bathing Facilities
- ANSI Z124.1 Ignition Test
- ASTM E162 for Flammability
- NFPA 258 for Smoke Density



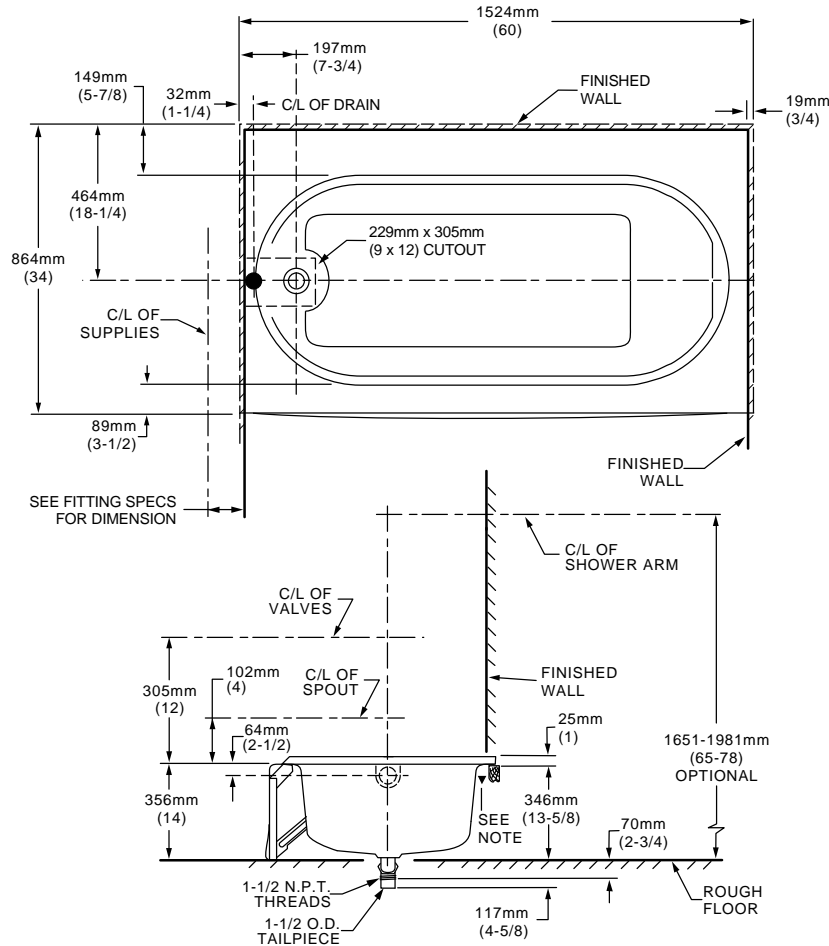
**NOTE:** Roughing-in dimensions shown on reverse side of page.

To Be Specified

- Color:
- Bath Faucet\*:
- Faucet Finish:
- Drain:
- Drain Finish:

\* See faucet section for additional models available

NOTE: Roughing-in shown for 2394/2395 only. Refer to installation instruction for 2396/2397 above-floor installation.



<b>GENERAL SPECIFICATIONS FOR 2394/2395 BATHING POOL</b>	
INSTALLED SIZE	1524 x 864 x 356mm (60 x 34 x 14 In.)
WEIGHT	54 Kg. (119 Lbs.)
WEIGHT w/WATER	211 Kg. (469 Lbs.)
GAL. TO OVERFLOW	159 L (42 Gal.)
BATHING WELL AT SUMP	1067 x 483mm (42 x 19 In.)
BATHING WELL AT RIM	1423 x 635mm (56 x 25 In.)
WATER DEPTH TO OVERFLOW	241mm (9-1/2 In.)
FLOOR LOADING (PROJECTED AREA)	160 Kgs./Sq.m (38 Lbs./Sq.Ft.)
PTS.	9.3
CUBE (FT <sup>3</sup> )	20.1

<b>GENERAL SPECIFICATIONS FOR 2396/2397 BATHING POOL</b>	
INSTALLED SIZE	1524 x 864 x 445mm (60 x 34 x 17-1/2 In.)
WEIGHT	57 Kg. (127 Lbs.)
WEIGHT w/WATER	215 Kg. (477 Lbs.)
GAL. TO OVERFLOW	159 L (42 Gal.)
BATHING WELL AT SUMP	1067 x 483mm (42 x 19 In.)
BATHING WELL AT RIM	1423 x 635mm (56 x 25 In.)
WATER DEPTH TO OVERFLOW	241mm (9-1/2 In.)
FLOOR LOADING (PROJECTED AREA)	163 Kgs./Sq.m (34 Lbs./Sq.Ft.)
PTS.	9.3
CUBE (FT <sup>3</sup> )	20.1

**NOTES:**

- LEFT HAND OUTLET SHOWN, RIGHT HAND REVERSE DIMENSIONS. (2395.202).
- SHOWN WITH POP-UP C.D. & O.
- REFER TO INSTALLATION INSTRUCTIONS SUPPLIED WITH FITTING.
- CONCEALED PIPING NOT FURNISHED.
- FITTINGS NOT INCLUDED AND MUST BE ORDERED SEPARATELY.
- PROVIDE SUITABLE REINFORCEMENT FOR ALL WALL SUPPORTS.
- ▼ REFER TO INSTALLATION INSTRUCTIONS SUPPLIED WITH BATH.

**IMPORTANT:** Dimensions of fixtures are nominal and may vary within the range of tolerances established by ANSI Standard A112.19.4. These measurements are subject to change or cancellation. No responsibility is assumed for use of superseded or voided leaflet.

**SPS 2395/2394/2396/2397**

**PRINCETON RECESS BATH W/ LUXURY LEDGE AND INTEGRAL OVERFLOW**

Americast® brand engineered material

- 2394.202 ICH** (Chrome Trim)  
Left Hand Outlet
- 2394.202 ICHTC** Same as above  
with Tub Cover
- 2395.202 ICH** (Chrome Trim)  
Right Hand Outlet
- 2395.202 ICHTC** Same as above  
with Tub Cover
- 2394.202 IPB** (Polished Brass Trim)  
Left Hand Outlet
- 2394.202 IPBTC** Same as above  
with Tub Cover
- 2395.202 IPB** (Polished Brass Trim)  
Right Hand Outlet
- 2395.202 IPBTC** Same as above  
with Tub Cover

- Lift and turn drain stopper assembly included with bath
- Escutcheon included and installed on bath
- Acid resistant porcelain finish
- Recess bath with integral apron and tiling flange
- Integral lumbar support
- Extra wide ledge for placement of toiletries
- Beveled headrest
- Full slip-resistant coverage
- End drain outlet

Nominal Dimensions: 1524 x 864 x 356mm  
(60" x 34" x 14")

Bathing Well Dimensions: 1423 x 635 x 337mm  
(56" x 25" x 13-1/4")

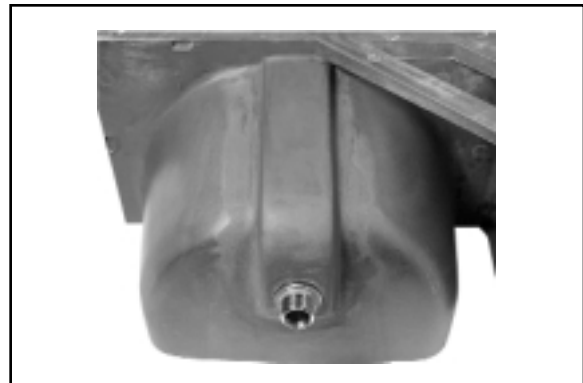
Americast® brand engineered material is a composition of porcelain bonded to enameling grade metal, bonded to a patented structural composite.

**Compliance Certifications -  
Meets or Exceeds the Following Specifications:**

- ASME A112.19.4 for Americast Plumbing Fixtures
- ASTM F-462 for Slip-resistant Bathing Facilities
- ANSI Z124.1 Ignition Test
- ASTM E162 for Flammability
- NFPA 258 for Smoke Density



**NOTE:** Roughing-in dimensions shown on reverse side of page.



Photograph details integral overflow and drain assembly. Drain assembly included with bath.

To Be Specified

- Color:
- Bath Faucet\*:
- Faucet Finish:

\* See faucet section for models available

**SPS 2394 ICH /2395 ICH /2394 IPB /2395 IPB**





**PRINCETON™ RECESS BATH  
w/LUXURY LEDGE AND INTEGRAL  
OVERFLOW** AMERICAST® BRAND ENGINEERED MATERIAL

**PRINCETON RECESS BATH W/ LUXURY  
LEDGE AND INTEGRAL OVERFLOW for Above  
Floor Rough Installation**

Americast® brand engineered material

- 2396.202 ICH** (Chrome Trim) Left Hand Outlet for above floor installation
- 2396.202 ICHTC** Same as above with Tub Cover
- 2397.202 ICH** (Chrome Trim) Right Hand Outlet for above floor installation
- 2397.202 ICHTC** Same as above with Tub Cover
- 2396.202 IPB** (Polished Brass Trim) Left Hand Outlet
- 2396.202 IPBTC** Same as above with Tub Cover
- 2397.202 IPB** (Polished Brass Trim) Right Hand Outlet
- 2397.202 IPBTC** Same as above with Tub Cover

- Lift and turn drain stopper assembly included with bath
- Escutcheon included and installed on bath
- Acid resistant porcelain finish
- Recess bath with integral apron and tiling flange
- Integral lumbar support
- Beveled headrest
- Full slip-resistant coverage
- End drain outlet

Nominal Dimensions: 1524 x 864 x 445mm  
(60" x 34" x 17-1/2")

Bathing Well Dimensions: 1423 x 635 x 337mm  
(56" x 25" x 13-1/4")

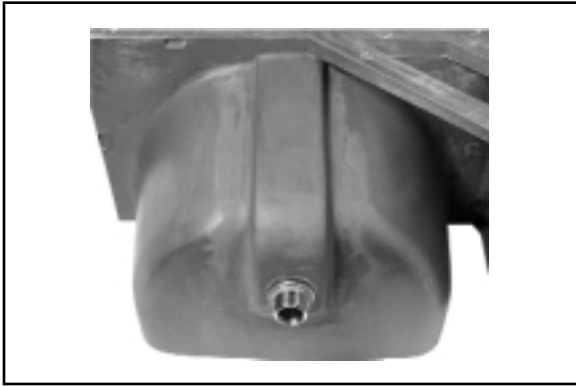
Americast® brand engineered material is a composition of porcelain bonded to enameling grade metal, bonded to a patented structural composite.

**Compliance Certifications -  
Meets or Exceeds the Following Specifications:**

- ASME A112.19.4 for Americast Plumbing Fixtures
- ASTM F-462 for Slip-resistant Bathing Facilities
- ANSI Z124.1 Ignition Test
- ASTM E162 for Flammability
- NFPA 258 for Smoke Density



**NOTE:** Roughing-in dimensions shown on reverse side of page.



Photograph details integral overflow and drain assembly. Drain assembly included with bath.

To Be Specified

- Color:
- Bath Faucet\*:
- Faucet Finish:

\* See faucet section for models available

**SPS 2396 ICH /2397 ICH /2396 IPB /2397 IPB**

