

**CADET™ ELONGATED PRESSURE-ASSISTED TOILET**

**2333.100**

- Vitreous china
- Low-consumption (6.0 Lpf/1.6 gpf)
- Elongated bowl
- Pressure-assisted siphon jet flush action
- Fully-glazed 2" ballpass trapway
- 10" x 12" water surface area
- Side-mounted chrome trip lever
- Close-coupled flushometer tank\*
- Speed Connect™ tank/bowl coupling system
- 2 bolt caps
- 100% factory flush tested

**3099.016 Bowl**

**4098.100 Tank**



Nominal Dimensions:  
31" x 19-1/2" x 29"  
(787 x 495 x 737mm)

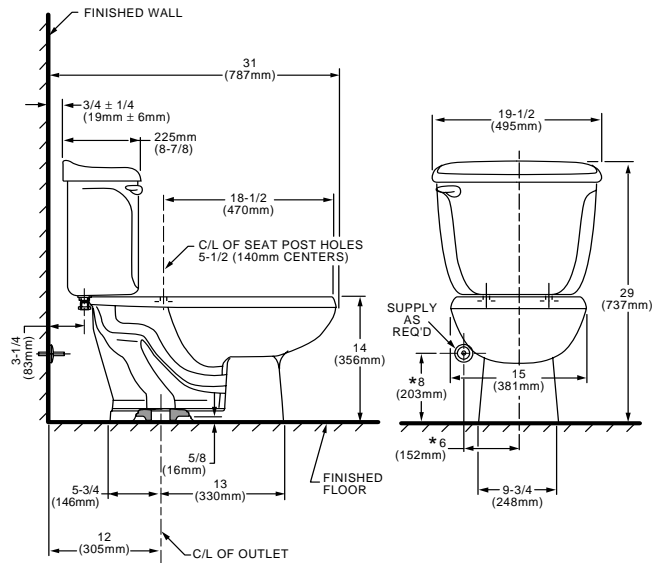
Fixture only, seat and supply by others  
Working pressure range 30 psi - 80 psi

Alternate Configurations Available

- 3099.203** Elongated bowl only w/slotted rim for bedpan holding
- 4098.700** Tank and tank cover only w/tank cover locking device
- 4098.800** Tank and tank cover only w/right hand trip lever

To Be Specified

- Color:
- Seat: American Standard #5324.019 "Rise and Shine" (with easy to clean lift-off hinge system) solid plastic closed front seat with cover. See page TB-001.
- Seat: American Standard #5311.012 "Laurel" molded closed front seat with cover. See page TB-001.
- Alternate Seat:
- Supply with stop:



**NOTES:**

THIS COMBINATION IS DESIGNED TO ROUGH-IN AT A MINIMUM DIMENSION OF 305MM (12") FROM FINISHED WALL TO C/L OF OUTLET.  
\* DIMENSION SHOWN FOR LOCATION OF SUPPLY IS SUGGESTED.  
SUPPLY NOT INCLUDED WITH FIXTURE AND MUST BE ORDERED SEPARATELY.  
FOR ADDITIONAL INFORMATION REFER TO INSTALLATION INSTRUCTIONS SUPPLIED.  
IMPORTANT: Dimensions of fixtures are nominal and may vary within the range of tolerance established by ANSI Standard A112.19.2  
These measurements are subject to change or cancellation. No responsibility is assumed for use of superseded or voided pages.

**Compliance Certifications -**

**Meets or Exceeds the Following Specifications:**

- ASME A112.19.2M (and 19.6M) for Vitreous China Fixtures - includes Flush Performance, Ball Pass Diameter, Trap Seal Depth and all Dimensions

\* Flushmate III tank system by Flushmate® Div. of Sloan Valve Co.