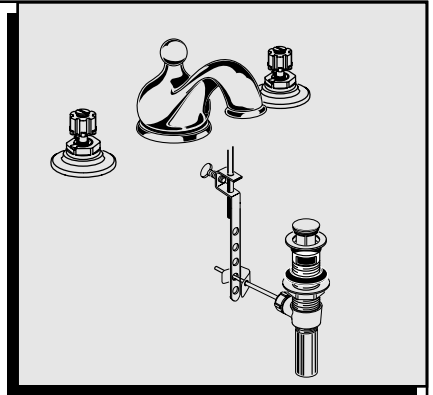


American Standard

# Installation Instructions

## AMARILIS

### 3801 SERIES 3841 SERIES



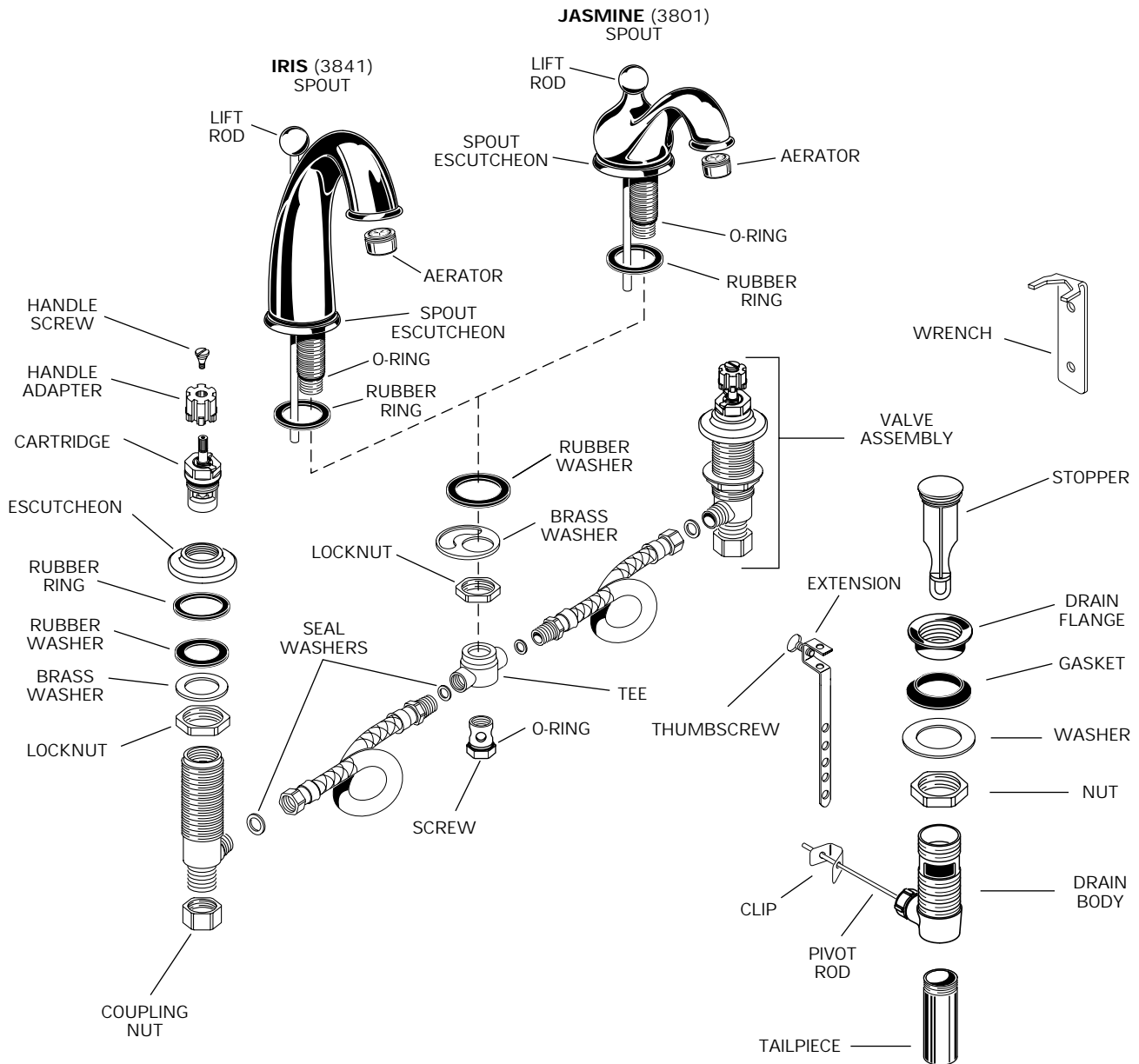
Certified to comply with ANSI A112.18.1M  
U.S. Patent No. 5,819,789

## SPREAD LAVATORY FAUCETS

Thank you for selecting American-Standard...the benchmark of fine quality for over 100 years.

To ensure that your installation proceeds smoothly-please read these instructions carefully before you begin.

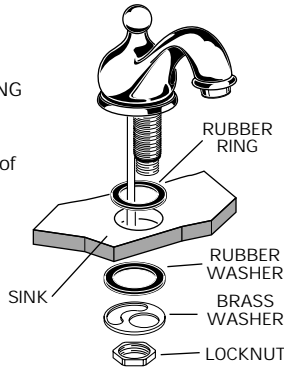
43167A



# 1 Turn off hot and cold water supplies before beginning.

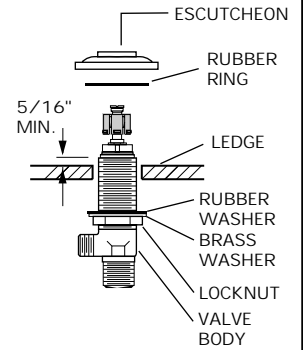
## SPOUT ASSEMBLY

- Insert SPOUT shank through center hole of SINK, making sure RUBBER RING is properly positioned.
- Assemble RUBBER WASHER, BRASS WASHER and LOCKNUT onto threads of SPOUT from underside of SINK.
- Insert LIFT ROD through SPOUT and slot of BRASS WASHER.
- Align SPOUT and tighten LOCKNUT. Be sure slot in BRASS WASHER is positioned to the rear as shown.



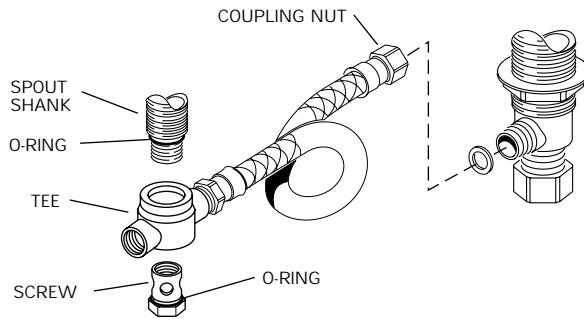
# 2 VALVE INSTALLATION

- Insert VALVE BODY through hole from underside of SINK. Thread of VALVE BODY should extend at least 5/16 inch above SINK top. If necessary, adjust LOCKNUT.
- Place RUBBER RING into ESCUTCHEON and screw ESCUTCHEON onto VALVE BODY until snug against internal stop.
- Set VALVE BODIES so that their outlets are facing toward center of SINK. Tighten LOCKNUT using wrench supplied with faucet.
- Refer to separate "Instruction Sheet" for assembly of handles.



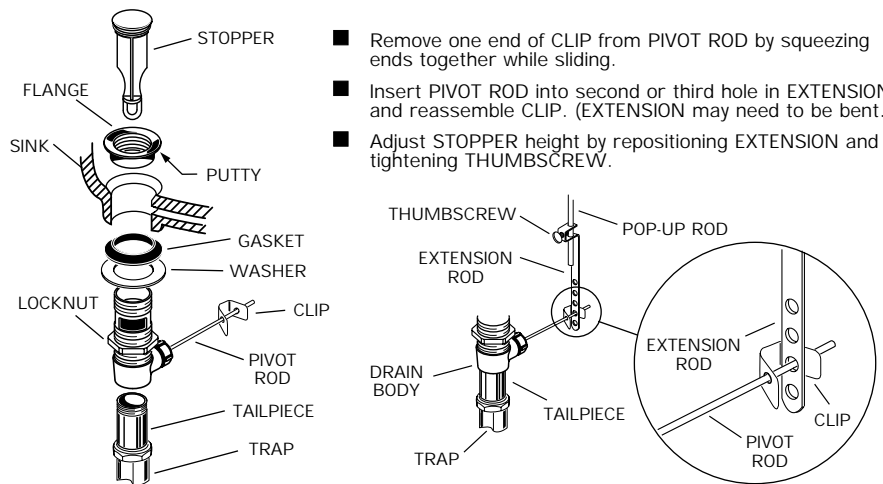
# 3 TEE AND HOSE INSTALLATION

- Before connecting TEE make certain that O-RINGS are properly seated on SPOUT SHANK and SCREW.
- Push SCREW into TEE and tighten SCREW onto SHANK to secure SPOUT connection.
- Place WASHERS inside COUPLING NUTS of HOSE and connect HOSE to each valve outlet. Tighten COUPLING NUTS.
- Connect HOT water supply to the left valve and the COLD water to the right valve using sealant and appropriate connectors and coupling nuts.



# 4 INSTALL POP-UP DRAIN

- Push TAILPIECE down into TRAP (threaded end up).
- Thread LOCKNUT, WASHER and GASKET onto DRAIN BODY.
- Apply a bead of PUTTY to underside of FLANGE.
- Feed DRAIN BODY up through SINK and thread FLANGE fully onto BODY.
- Tighten LOCKNUT firmly, keeping the PIVOT ROD pointed towards the back of the SINK.
- Drop STOPPER into DRAIN BODY.
- Pull TAILPIECE up and thread tightly into DRAIN BODY.
- Position EXTENSION ROD onto POP-UP ROD and tighten THUMBSCREW.



- Remove one end of CLIP from PIVOT ROD by squeezing ends together while sliding.
- Insert PIVOT ROD into second or third hole in EXTENSION and reassemble CLIP. (EXTENSION may need to be bent.)
- Adjust STOPPER height by repositioning EXTENSION and tightening THUMBSCREW.

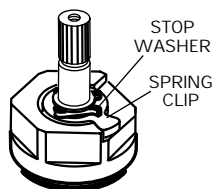
# 5 TEST INSTALLED FAUCET

- Remove AERATOR.
- With handle in OFF position, turn on water supplies and check all connections for leaks.

- Operate both handles to flush water lines thoroughly. Check spout mounting and hose connections for leaks.
- Operate LIFT ROD and check DRAIN for leaks.
- Turn handles into OFF position and replace AERATOR.

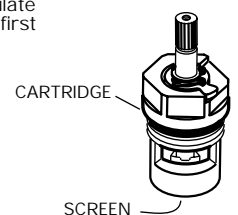
# 6 SERVICE

- To change direction of handle rotation, proceed as follows:
  - Turn valve to OFF position.
  - Remove INSERT and HANDLE SCREW.
  - Slip HANDLE with ADAPTER off.
  - Remove SPRING CLIP.
  - Lift STOP WASHER, turn 90° and replace.
  - Replace SPRING CLIP.
  - Replace ADAPTER, HANDLE, SCREW, and INSERT.
- AERATOR may accumulate dirt causing distorted and reduced water flow. Remove AERATOR and rinse clean.



- If spout drips, operate handles several times from OFF to ON position. Do not force - handles turn only 90°.

- Plastic SCREEN in CARTRIDGE may accumulate dirt causing reduced water flow. To clean, first turn off hot and cold water supplies, then:
  - Remove INSERT and HANDLE SCREW.
  - Slip HANDLE with ADAPTER off.
  - Unscrew CARTRIDGE with wrench.
  - Thoroughly rinse plastic SCREEN at base of CARTRIDGE.
  - Replace CARTRIDGE until flange is tight against valve body.
  - Turn valves OFF.
  - Replace ADAPTER, HANDLE, SCREW, and INSERT.



HOTLINE FOR HELP  
For toll-free information and answers to your questions, call:  
1 (800) 223-0068  
Weekdays 8:00 a.m. to 7:00 p.m. Eastern Time  
Saturdays 8:00 a.m. to 4:00 p.m. Eastern Time  
IN CANADA 1-800-387-0369 (TORONTO 1-416-536-5609)

Product names listed herein are trademarks of American Standard Inc.  
©American Standard Inc. 1999