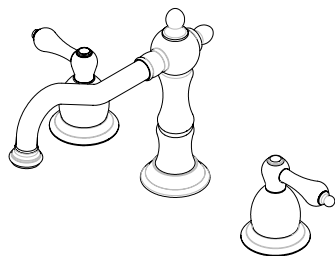




Belle Forêt
collection

N300

TWO HANDLE LAVATORY FAUCET

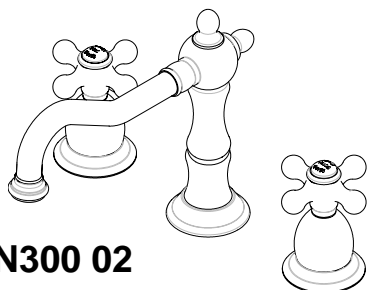


N300 01

Product Features

- 6-12" Widespread Installation
- 2.2 GPM @ 60PSI water saving aerator
- Brass body
- 1/2" 14 NPS Inlet
- Ceramic cartridge
- Handle:

- N300 01 Metal lever handle
- N300 02 Metal cross handle



N300 02

Standards/Approvals

- N300 meets or exceeds:
- ANSI/ASME A112.18.1
- ANSI/NSF 61 – Sec 9
- IAPMO/UPC
- California Proposition 65
- N300 01 meets ADA requirements

UPC®



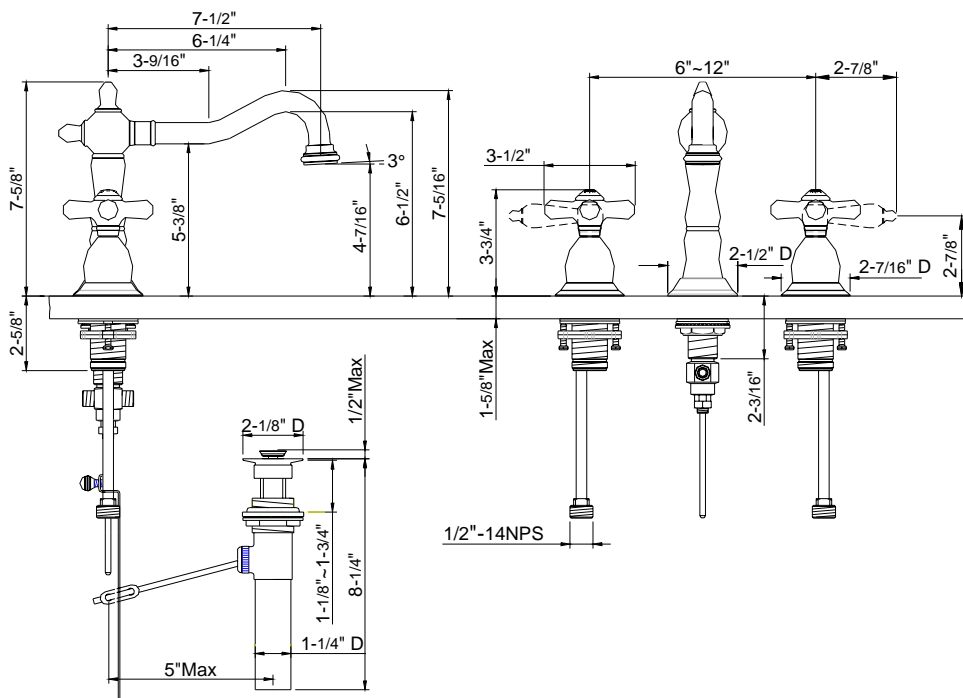
PRODUCT SPECIFICATION:

Two-handle lavatory faucet shall have a brass body, ceramic cartridge, 7-1/2" spout and metal lever or metal cross handle. Product shall be able to be installed in 6-12" widespread installation. Product shall be Belle Forêt model N300 _____.



Belle Forêt
collection

N300 TWO HANDLE LAVATORY FAUCET



Other Specifications

Faucet Hole diameter	1-1/2"
Max Deck Thickness	
Spout	1-5/8"
Valve Body	2"

Available Finishes

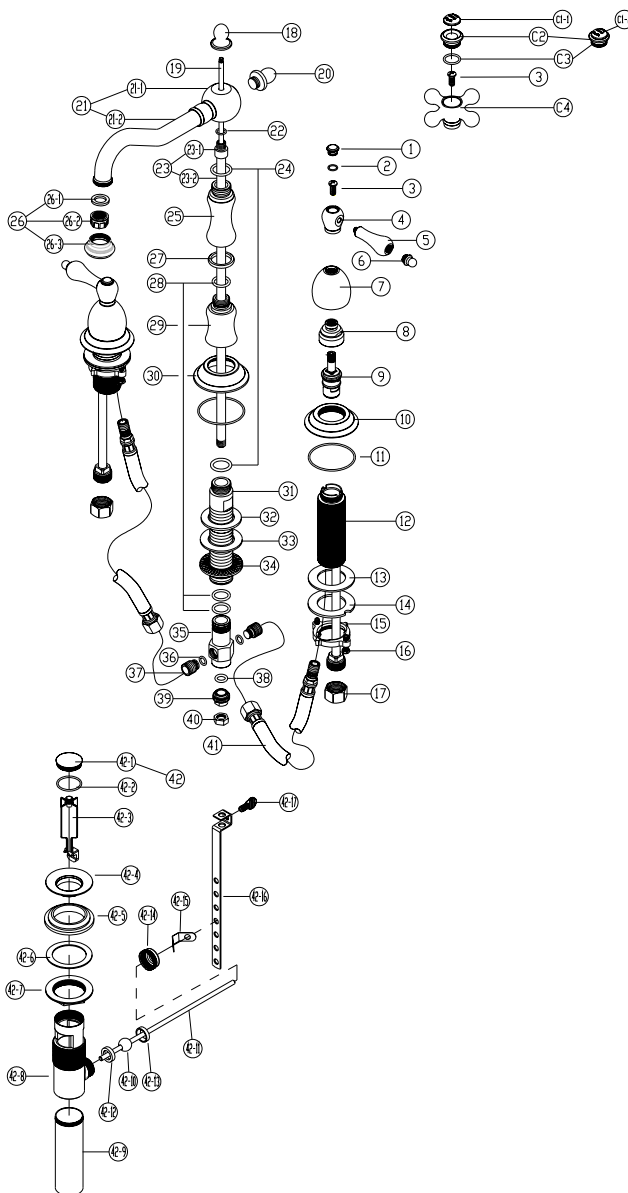
- Chrome
- Polished Brass
- Satin Nickel
- Oil Rubbed Bronze
- Matte Nickel
- Weathered Copper
- Polished Nickel



Belle Forêt
collection

N300 TWO HANDLE LAVATORY FAUCET

PARTS BREAKDOWN





Belle Forêt
collection

N300

TWO HANDLE LAVATORY FAUCET

PARTS LISTING

No	Name	Kit / Part #	Q'ty	No	Name	Kit / Part #	Q'ty
1	Index		1	25	Connector	N/A	1
2	O-ring	663292xx	1	26	Aerator		
3	Screw		1	26-1	Seal	500768Nxx	1
4	Handle hub		2	26-2	Insert		1
5	Lever	N/A	2	26-3	Shell		1
6	Handle knob		2	27	Ring		1
C1-1	Index-English		2	28	O-RING	N/A	3
C2	Handle cap		2	29	Connector		1
C3	O-ring		2	30	Trim ring	034750xx	1
C1-2	Index-French	663295xx	2	31	Body		1
C2	Handle cap		2	32	Seal		1
C3	O-ring		2	33	Washer		1
3	Screw		2	34	Nut		1
C4	Cross handle	N/A	2	35	Connector		1
7	Canopy		2	36	O-ring	N/A	2
8	Retainer nut	663998N	1	37	Connector		2
9	Cold Cartridge		1	38	O-ring		1
8	Retainer nut	663999N	1	39	Connector		1
9	Hot Cartridge		1	40	Nut		1
10	Trim ring		2	41	Connector	668210N	2
11	O-RING		3	42-1			1
12	Valve Body		2	42-2	Stopper		1
13	Washer	N/A	2	42-3			1
14	Washer		2	42-4	Trim Ring		1
15	Lock nut		2	42-5	Lower washer		1
16	Screw		4	42-6	metal washer		1
17	Supply nut		2	42-7	Locknut		1
18	Pop-up knob		1	42-8	Body		1
19	Pop-up rod	663109xx	1	42-9	Tailpiece	556200Lxx	1
20	Knob		1	42-10	Pivot rod gasket		1
21	Spout		1	42-11	Ball rod		1
21-1	Spout joint		1	42-12			1
21-2	Spout tube		1	42-13	Pivot rod gasket		1
22	O-RING	N/A	1	42-14	Locknut		1
23			1	42-15	Spring Clip		1
23-1	Sleeve		1	42-16	Strap		1
23-2			1	42-17	Thumbscrew		1
24	O-RING		2				

xx designates finish matched parts.