



# Specialty Tools



# Specialty Tools

## Tow Straps

Heavy-duty nylon web construction with reinforced stitching. Available with looped end or forged hooks. Abrasion and cut resistant. Strongest, longest-lasting webbing tow straps on the market. Meet or exceed all DOT specifications.

Styles and sizes available:

<b>KTI-73801</b> - Forged hooks	7,000 lb. capacity	2" width	10' length
<b>KTI-73802</b> - Forged hooks	10,000 lb. capacity	2" width	15' length
<b>KTI-73803</b> - Forged hooks	10,000 lb. capacity	2" width	25' length
<b>KTI-73810</b> - Looped ends	15,000 lb. capacity	2" width	20' length
<b>KTI-73811</b> - Looped ends	30,000 lb. capacity	3" width	20' length
<b>KTI-73812</b> - Looped ends	30,000 lb. capacity	3" width	30' length



## Heavy-duty Tow Straps

Heavy duty nylon web construction with reinforced stitching and looped ends. Abrasion and cut resistant. Strongest, longest-lasting webbing tow straps on the market. Meet or exceed all DOT specifications.

Sizes available:

<b>KTI-73813</b> - Looped ends	40,000 lb. capacity	6" width	30' length
<b>KTI-73814</b> - Looped ends	60,000 lb. capacity	6" width	30' length



## Stretch Cords

Braided cover prevents abrasions and provides added durability. Vinyl covered hooks prevents scratches. Designed for professional use.

Sizes available:

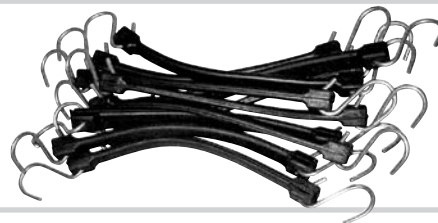
<b>KTI-73830</b> - General purpose	3/8" diameter	18" length	10-pack	Yellow
<b>KTI-73831</b> - General purpose	3/8" diameter	24" length	10-pack	Red
<b>KTI-73832</b> - General purpose	3/8" diameter	30" length	10-pack	Blue
<b>KTI-73833</b> - General purpose	13/32" diameter	40" length	10-pack	Yellow
<b>KTI-73834</b> - General purpose	13/32" diameter	48" length	10-pack	Multi



## Rubber Straps

Sizes available:

<b>KTI-73849</b> - EPDM Rubber Strap	14" length	10-pack
<b>KTI-73850</b> - EPDM Rubber Strap	21" length	10-pack
<b>KTI-73851</b> - EPDM Rubber Strap	31" length	10-pack



## Tie Downs & Straps

Styles and sizes available:

<b>KTI-73862</b> - Ratcheting Tie Down (endless loop)	900 lb. capacity	1" width	13' length	1-pack
<b>KTI-73861</b> - Ratcheting Tie Down (PVC-coated hooks)	900 lb. capacity	1" width	15' length	1-pack
<b>KTI-73870</b> - Ratcheting Tie Down (PVC-coated hooks) (each)	900 lb. capacity	1" width	15' length	4-pack
<b>KTI-73864</b> - Motorcycle Tie Down (1 chrome and 1 PVC-coated hook)	1,200 lb. capacity	1" width	6' length	1-pack
<b>KTI-73871</b> - Universal Tie Down (PVC-coated hooks)	900 lb. capacity	1" width	10' length	1-pack
<b>KTI-73873</b> - Cam Buckle Tie Down (Cam buckles)	900 lb. capacity	1" width	13' length	1-pack



KTI-73862



KTI-73861



KTI-73864



KTI-73871



KTI-73873

K-Tool International recommends that the working load never exceed 1/3 of the rated capacity. Any strap assembly is only as strong as its weakest component, including the point of attachment or anchor.

# Specialty Tools

## Utility Brushes

Wood handle brushes have natural bristles not affected by thinners or other solvents.

- Sold separately:  
**KTI-74005** - 1/2" width  
**KTI-74010** - 1" width  
**KTI-74015** - 1-1/2" width  
**KTI-74020** - 2" width  
**KTI-74025** - 2-1/2" width  
**KTI-74030** - 3" width



### KTI-74103

#### 3-piece Mini Brush Set

Set includes one brass, nylon and stainless steel brush. Features molded poly handles. Overall length: 7 inches.

- Set includes (also available individually):  
**KTI-74106** - Brass  
**KTI-74107** - Nylon  
**KTI-74108** - Steel



### KTI-73510

#### Black Electrical Tape



Roll measures 3/4" wide x 60'. Sold in sleeve of ten rolls.

### KTI-73550

#### Thread Sealing Tape



Each roll measures 1/2" wide x 260". Ideal for sealing threaded pipe. 5-pack.

### KTI-73560

#### Duct Tape



Multipurpose gray duct tape for numerous uses. Roll measures 2" wide x 60 yards. U.S.-made

#### Tape Measures



- Sold separately:  
**KTI-72612** - 1/2" x 12'(3.5M) Fractional/Metric Graduations  
**KTI-72625** - 3/4" x 25'(7.5M) Fractional/Metric Graduations





## KTI-70004

### 4-piece Putty Knife / Scraper Set

Four-piece set includes: 1" stiff edge; 1-1/2" stiff edge; 1-1/2" flex edge; and 3" flex edge. Use to apply adhesives, filler, compound, spackles and more. Ideal for removing paint, rust, gaskets, carbon, filler and undercoating. All blades are high carbon, heat-treated, tempered, polished to mirror finish and full tang. Tools fitted with grommeted brass, solvent-resistant, riveted wood handles. Features 15 degree sharp chisel edge on stiff scrapers.

Set includes (also available individually):

- KTI-70014** - Scraper Putty Knife 1" Stiff
- KTI-70015** - Scraper Putty Knife 1-1/2" Stiff

- KTI-70017** - Scraper Putty Knife 1-1/2" Flexible
- KTI-70018** - Scraper Putty Knife 3" Flexible



## KTI-70005

### 4-piece Putty Knife / Scraper Set

This 4-piece scraper set features a combination of flexible and stiff scrapers for the needs of any automotive body application or home improvement job. Constructed of stainless steel blades that taper at tip to provide great flexibility and blade action. Ergonomic, comfort-grip, non-slip handles. Contains an upholstery tucking tool, 2" flexible scraper, 1.25" flexible scraper and 1.25" stiff chisel.

Set includes (also available individually):

- KTI-70006** - Putty Knife, Upholstery Tucking Tool with Stainless Steel Blade and Comfort Grip Handle
- KTI-70007** - Putty Knife, 2" Flexible with Stainless Steel Blade and Comfort Grip Handle
- KTI-70008** - Putty Knife, 1.25" Flexible with Stainless Steel Blade and Comfort Grip Handle
- KTI-70009** - Putty Knife, 1.25" Stiff Chisel with Stainless Steel Blade and Comfort Grip Handle



## KTI-70023

### 4-piece Scraper Set

Set includes: stubby scraper; 1" carbon scraper; combination offset scraper; and 5/8" scraper. Also available individually. U.S.-made

Set includes (also available individually):

- KTI-70019** - Stubby Scraper
- KTI-70021** - 1" Carbon Scraper
- KTI-70022** - Combination Offset Scraper
- KTI-70027** - 5/8" Scraper



## KTI-70031

### 5-piece Upholstery Clip Remover Set

This set combines the most popular individual upholstery tools into one master set. Includes both "U" and "V" clip styles of tools as well as a reverse U-blade door panel clip removal tool. This is a complete set for anyone working on car upholstery or for removing panels from dash or door. Comes in a thermoformed tray for easy storage in any tool box. Available individually.

Set includes (also available individually):

- KTI-70032** - "V" Blade Door Panel Tool with Stainless Steel Blade
- KTI-70033** - "U" Blade Door Panel Tool with Stainless Steel Blade
- KTI-70034** - "U" Blade Mini Trim Panel Tool with Stainless Steel Blade
- KTI-70035** - "V" Blade Mini Trim Panel Tool with Stainless Steel Blade
- KTI-70036** - Reverse "U" Blade Door Panel Tool with Stainless Steel Blade



# Specialty Tools

## Scrapers

Professional quality and perfect for any application in the garage, shop or around the house. Multipurpose tool features stainless steel blade. High-quality wood handle for strength and durability. Lifetime warranty.

Sold separately:

- KTI-70024** - Scraper 3/4" Chisel - U.S.-made
- KTI-70026** - Scraper 1-1/2" Chisel - U.S.-made
- KTI-70025** - Scraper 1-1/2" Flexible - U.S.-made
- KTI-70028** - Putty Knife
- KTI-70029** - Scraper 3" Flexible - U.S.-made



except KTI-70028



**KTI-70016**

### Mini Scraper



Grip-coated handle for better comfort and control. Angled tip for increased accuracy. Blade locks securely in place. Quick and easy blade changes. Reversible blade for safe storage. Includes one (1) single edge blade. Length: 4 1/2". Assorted colors.

**KTI-73105**

### Utility Knife



Retractable 6" utility knife with extra blade storage in handle.

Replacement parts:

**KTI-70546** - Replacement blades 6-pack



**KTI-70020**

### Long Handled Scraper



Extra-long scraper with contoured handle to reduce fatigue. The 1" blade is ideal for removing gaskets. Lightweight, durable construction.

**KTI-70540**

### Windshield Removing Tool



Facilitates removal of windshields and backlights by cutting sealant around windows. Each tool includes an extra replacement blade.

Replacement parts:

**KTI-70541** - Replacement blade



**LIFETIME WARRANTY**

**LIFETIME WARRANTY**

**KTI-70545**

### Professional Heavy-duty Windshield Knife



Features professional-grade construction from heavy-duty steel and aluminum. Knife is lightweight and easy-to-use. Extra-long reach to cut hardened urethane all the way down to the dash line and offers increased leverage and greater control for a safer, smoother cut. The padded, ergonomic handle also features storage space for replacement blades. Blades can be easily changed by releasing a simple one-screw retaining clip.

**KTI-73104**

### Monster Utility Knife



This utility knife features a quick-change blade system equipped with six (6) snap-off blades. Always ready with a razor-sharp blade! Monster utility knife also features an extra-large, ergonomic grip for added control. Knife measures a whopping 8" x 2.5" x 1".

Replacement parts:

**KTI-73104-1** - Replacement blades 10-pack

Replacement parts:

**KTI-70546** - Replacement blades 6-pack



**LIFETIME WARRANTY**



**KTI-72355**

## Ratcheting Hose and Pipe Cutter

KTI's ratcheting hose and pipe cutting pliers accommodate a variety of materials up to 1-1/2" in diameter. The ratcheting action makes cutting smooth and easy. A one-touch, quick release lever opens pliers instantly. Built-in clasp securely locks handles when not in use for added safety. Cuts industrial air hose, multipurpose hose, heater and washer vacuum hose, non-metallic fuel line hose, PVC pipe, battery cables and much more. Lifetime warranty.

Replacement parts:

**KTI-72355-1** - Replacement blade



**LIFETIME WARRANTY** 

**KTI-72801**

## Hacksaw



12" top quality, sturdy hacksaw. Adjustable tensioner. Includes one (1) saw blade.

**LIFETIME WARRANTY**

**KTI-72802**

## Heavy-duty Hacksaw



Hacksaw features heavy-duty frame, high leverage tensioner and handle with blade storage compartment. Blade can be set vertically or at 45-degree angle.

**LIFETIME WARRANTY**

**KTI-57124**

## Bolt Cutter 24"



Tool features specially designed curved handles for more efficient strength application and comfortable rubber handles for firm and safe gripping. Chrome vanadium head is precisely heat treated and hardened for durability.

Replacement parts:

**KTI-57224** - Replacement head 24"

**LIFETIME WARRANTY** 

**KTI-57136**

## Bolt Cutter 36"



Tool features specially designed extra long curved handles for additional power and leverage and efficient strength application. Bolt cutter has comfortable rubber handles for firm and safe gripping. Chrome vanadium head is precisely heat treated and hardened for durability.

Replacement parts:

**KTI-57236** - Replacement head 36"

**LIFETIME WARRANTY** 

**KTI-79100**

## Heavy-duty Riveter



Features four different nose pieces to secure rivets: 3/32" (2.4 mm), 1/8" (3.2 mm), 5/32" (4.0 mm) and 3/16" (4.8 mm). Includes rivet samples.

**LIFETIME WARRANTY**

**KTI-79110**

## Super Heavy-duty Riveter



Tool's 17" handles provide the leverage needed to effortlessly secure five different rivets: 1/8" (3.2 mm), 5/32" (4.0 mm), 3/16" (4.8 mm), 7/32" (6.0 mm) and 1/4" (6.4 mm).

**LIFETIME WARRANTY**

# Specialty Tools

**KTI-72310**

**Tube Cutter Mini -  
Range 1/8" to 5/8" OD**



Cuts 1/8" to 5/8" OD tubing. Compact size for use in confined areas. Features rollers to ease operation.

**LIFETIME  
WARRANTY**

**KTI-72320**

**Tubing Bender -  
U.S.-made**



Bends 3/16", 1/4", 5/16" and 3/8" diameter tubing. Features aluminum mandrel.

**MADE IN  
USA** **LIFETIME  
WARRANTY**

**KTI-72330**

**Tubing Cutter  
Heavy-duty**



Cuts 1/8" to 1-1/8" OD tubing. Heavy-duty rollers smooth operation.

**LIFETIME  
WARRANTY**

**KTI-72340**

**Tubing Bender**



Bends 1/4", 5/16" and 3/8" OD aluminum, steel and copper tubing.

**LIFETIME  
WARRANTY**

**KTI-72345**

**Tubing Bender  
Heavy-duty Pliers**



Bends 3/16", 1/4", 5/16" and 3/8" diameter copper and steel tubing without collapsing or kinking.

**LIFETIME  
WARRANTY**

**KTI-70010**

**Tapered Scratch Awl**



High quality chrome vanadium steel. Ergonomic, contoured handle. Used for scribing, punching holes and lining up panels or holes.

**LIFETIME  
WARRANTY**

**KTI-70070**

**4-piece Pick Set  
with Neon Orange  
Handles**



Includes four picks for removing, installing, aligning, probing and piercing. Use to ease removal of O-rings, split pins, seals and bushes and loose parts. Set contains orange-handled straight, 45 degree, 90 degree and hook picks.

Set includes (also available individually):  
**KTI-70071** - Straight Neon Orange Pick  
**KTI-70072** - 45 Degree Neon Orange Pick  
**KTI-70073** - 90 Degree Neon Orange Pick  
**KTI-70074** - Hook Neon Orange Pick

**LIFETIME  
WARRANTY**

**KTI-70075**

**4-piece Pick Set  
with Neon Green  
Handles**



Includes four picks for removing, installing, aligning, probing and piercing. Use to ease removal of O-rings, split pins, seals and bushes and loose parts. Set contains green-handled straight, 45 degree, 90 degree and hook picks.

Set includes (also available individually):  
**KTI-70076** - Straight Neon Green Pick  
**KTI-70077** - 45 Degree Neon Green Pick  
**KTI-70078** - 90 Degree Neon Green Pick  
**KTI-70079** - Neon Green Hook Pick

**LIFETIME  
WARRANTY**



# Specialty Tools

**KTI-70040**

## 5-piece Spiral Extractor Set



Aggressive spiral design provides extra grip to remove stubborn broken bolts. Manufactured with high carbon steel for long wear and durability. Sizes range from 1/8"-3/4" and 3 mm-18 mm.

**LIFETIME  
WARRANTY**

**KTI-70045**

## 5-piece Fluted Extractor Set



Extractors quickly and easily remove broken screws, pipes, bolts and studs. Manufactured with heat-treated chrome-moly steel for long wear and durability. Sizes range from 1/8"-3/8" and 3 mm-9.5 mm.

**LIFETIME  
WARRANTY**

**KTI-70816**

## Digital Disc Brake Caliper 0-6"



Digital display from 0-6" (150 mm). Accuracy to plus/minus .001" (0.1 mm). Stainless steel construction and shockproof. Thumb wheel for accuracy and ease of use. English/metric readout.

**LIFETIME  
WARRANTY**

**KTI-70826**

## Digital Disc Brake Caliper 0-6"



Digital display from 0-6" (150 mm). Accuracy to .001" (0.1 mm) Stainless steel construction and shockproof. Zero position memory. English/metric readout.

**LIFETIME  
WARRANTY**

## Deluxe Fender Cover



Vinyl-backed foam cover is designed to protect/cover fenders to avoid scratching, marring or damaging vehicle finish. Available in black or red. U.S.-made.

Sold separately:  
KTI-73201 - Black  
KTI-73202 - Red

**MADE IN  
USA** **LIFETIME  
WARRANTY**

**KTI-70550**

## Sanding Pen



Over 20,000 glass fibers in a pen point reach where normal sand paper cannot. Includes one extra sanding point in rear cap. U.S.-made.

Replacement parts:  
KTI-70551 - 2-pack refill for sanding pen

**MADE IN  
USA** **r**

**KTI-73400**

## Number and Letter Stamp Set - Size 3/16"



Combination set includes 3/16" set of numbers and 3/16" set of letters. Includes convenient storage case.

**LIFETIME  
WARRANTY**

**KTI-70050**

## Butane Fuel



1.5 fl.oz. (42g) professional-grade butane fuel. Universal filling tip can be used with most refillable butane products. Adapters are not normally required when refilling tanks. Double scrubbed and triple filtered for trouble-free use. Use for pocket torches, lighters, lanterns, table torches and other butane-powered tools.

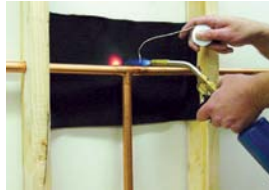
**MADE IN  
USA**



# Specialty Tools

## KTI-70440

### Torch Shield



Protect surfaces from sparks or open flame from gas torches. Even withstands the extreme heat of acetylene torches. Size: 10" X 18". U.S.-made



## KTI-70450

### Welding Blanket



A patented high-tech carbon fiber welding blanket that is lightweight, soft and flexible. Provides protection against direct contact with weld spatter. Will withstand temperatures to 3,000 degrees F. Size: 50" x 80". U.S.-made.



## KTI-70461

### Child Safety Blanket



PyroBlanket protects infants from flames and burns. Blanket boasts patented flame resistance and heat blocking protection. Soft and lightweight. TPP rating of 17. Size: 35" x 39". Weighs 7 oz. Machine washable.

### CARBON FIBER FEATURES:

- Lightweight, soft and flexible.
- Protection for direct contact with weld spatter.
- Withstands temperatures to 3,000°F, fire- and heat-resistant.
- Reduces the chance of sparks damaging fabric, pitting glass or marring paint .
- Will not scratch any painted surface.
- Can be used in emergencies to smother small fires in a car or anywhere in the shop.

**Warning:** Avoid contact with flammable liquids. Flammable liquids will ignite when exposed to sparks or flame. Always inspect welding blanket for damage before each use. Avoid sharp edges or other obstructions to prevent damage to blanket. Clean blanket after each use. To clean, shake the blanket and replace in the original bag. DO NOT clean with water or other liquids. Do not use if wet.

## KTD-77601

### GlassMaster Pro Kit

The GlassMaster Pro Kit includes the long-handled GlassMaster Pro wand, two interchangeable cleaning heads, three fitted bonnets, plus a bonus stow-and-go storage bag. The patented GlassMaster Pro effortlessly cleans hard-to-reach areas, including windshields, glass doors, dashboards and much more. Great for cars, SUVs, RVs, trucks, minivans, boats, home and office. Spray favorite cleaners directly on GlassMaster Pro, eliminating overspray on dashboards, sensitive electronics, furniture, etc. Wand boasts super-strong I-beam construction and premium grade ABS materials. Thick comfort grip handle. Use one detachable head for wet cleaning / scrubbing. Use second head for drying/polishing. Kit contains nylon bonnet for scrubbing; multipurpose bonnet for cleaning; and microfiber cloth for removing streaks.

- GlassMaster Pro Replacement Parts and Accessories:
- KTD-72002** - GlassMaster Pro Microfiber Bonnets 2-pack
  - KTD-72004** - GlassMaster Pro Microfiber Bonnets 3-pack
  - KTD-72502** - GlassMaster Pro Microfiber Cloth 2-pack
  - KTD-74003** - GlassMaster Pro Terry Cloth Bonnets 2-pack
  - KTD-74004** - GlassMaster Pro Terry Cloth Bonnets 3-pack
  - KTD-74503** - GlassMaster Pro Multipurpose Cloths 2-pack
  - KTD-76003** - GlassMaster Pro Assorted Bonnets 3-pack
  - KTD-76503** - GlassMaster Pro Assorted Cloths 3-pack
  - KTD-77610** - GlassMaster Pro Extension Handle

### Kit includes:

- One (1) nylon bonnet →
- One (1) microfiber bonnet →
- One (1) multipurpose bonnet →



KTD-72002



KTD-72502



KTD-74003



KTD-74503



KTD-76003



KTD-76503





# Specialty Tools

**KTI-70900**

**Magnet Wire Flex  
Retriever Tool  
8lb. Pull**



Retriever goes where human hands cannot. Extendable magnet easily picks up and retrieves dropped items. Tool features an ergonomic grip, a bendable shapeable wire flex shaft, powder-coated steel casings to reduce side pull, and a powerful, lightweight magnet to reach tight places. U.S.-made Length: 21". Pull: 8 lbs.



**KTI-70901**

**Magnet Swivel Head  
Telescopic Tool  
14lb. Pull**



Retriever goes where human hands cannot. Extendable magnet easily picks up and retrieves dropped items. Tool features an ergonomic grip, a 180 swivel head, a telescopic shaft, powder-coated steel casings to reduce side pull, and a powerful, lightweight magnet to reach tight places. U.S.-made Length: 6-1/2" to 32". Pull: 14 lbs.



**KTI-70903**

**Magnet Telescopic  
Tool Straight  
14lb. Pull**



Retriever goes where human hands cannot. Extendable magnet easily picks up and retrieves dropped items. Tool features an ergonomic grip, a telescopic shaft, powder-coated steel casings to reduce side pull, and a powerful, lightweight magnet to reach tight places. U.S.-made Length: 6-1/2" to 32". Pull: 14 lbs.



**KTI-70904**

**Magnet Telescopic  
Tool Straight  
5lb. Pull**



Retriever goes where human hands cannot. Extendable magnet easily picks up and retrieves dropped items. Tool features an ergonomic grip, a telescopic shaft, powder-coated steel casings to reduce side pull, and a powerful, lightweight magnet to reach tight places. U.S.-made Length: 6-1/2" to 32". Pull: 5 lbs.



**KTI-70905**

**Magnet Telescoping  
Pocket Retriever  
3.5lb. Pull**



Pocket size retriever features a telescoping shaft that extends from 5-1/4" to 24". Pull: 3-1/2 lbs. U.S.-made



**KTI-70909**

**Super-duty  
Magnet Telescoping  
Tool Straight 30lb.  
Pull**



Super-duty retriever goes where human hands cannot. Extendable magnet easily picks up and retrieves dropped items. Tool features an ergonomic grip, a telescopic shaft, powder-coated steel casings to reduce side pull, and a powerful, lightweight magnet to reach tight places. Length: 16" to 28". Pull: 30 lbs. U.S.-made



# Specialty Tools

**KTI-70910**

## Magnetic Pickup Tool



Magnetic telescoping pickup tool extends from 5-1/4" to 22-3/4". Handy pocket-clip keeps the tool right at your fingertips!

**KTI-70915**

## Telescoping Pocket Magnet



Extendable magnetic pickup tool extends from 13" to 20". Telescoping shaft is capable of lifting 3.5 pounds. There isn't a lost nut or bolt this tool can't pick up!

**KTI-70920**

## Mirror Glass Telescoping Tool Rectangular



Tool goes where human eyes cannot. Highly polished and protected mirror is attached to an expandable telescopic, ergonomic handle for user convenience. Rectangular mirror measures 1-1/4" x 2-1/4". Length: 6-1/2" to 32". U.S.-made



**KTI-70921**

## Mirror Glass Telescoping Tool Square



Tool goes where human eyes cannot. Highly polished and protected mirror is attached to an expandable telescopic, ergonomic handle for user convenience. Square mirror measures 1-1/4" x 1-1/4". Length: 6-1/2" to 32". U.S.-made



**KTI-70922**

## Mirror Glass Telescoping Tool Round



Tool goes where human eyes cannot. Highly polished and protected mirror is attached to an expandable telescopic, ergonomic handle for user convenience. Round mirror measures 3-3/4". Length: 20" to 31". U.S.-made



**KTI-70999**

## Magnetic Parts Dish Stainless Steel



Keeps small parts from spilling. Round, non-rusting stainless steel dish measures 5-3/4" diameter.

## C-clamps

Adjustable C-clamps manufactured from ductile iron.

Sold separately:

KTI-70182 - 2"

KTI-70183 - 3"

KTI-70184 - 4"

KTI-70186 - 6"

KTI-70188 - 8"



**LIFETIME WARRANTY**

### KTI-71103

#### 2-piece Flexible Line Clamp Set

Squeezes heater, radiator, vacuum or any flexible hose to assist with repairs or problem diagnosis. Clamps lock in place. Set includes one large and one small clamp.



Set includes (also available individually):

KTI-71105 - small

KTI-71106 - large

**LIFETIME WARRANTY**

### KTI-70600

#### Distributor Wrench

Wrench is 3/8" drive and 1/2" x 9/16".



**LIFETIME WARRANTY**

### KTI-71100

#### Hose Pinch-off Pliers

Eliminates the need to drain coolant when servicing cooling systems. Pliers squeeze shut heater or radiator hoses. Jaws swivel for parallel clamping. Tool features automatic locking ratchet and can also be used with vacuum and fuel lines.



**LIFETIME WARRANTY**

### KTI-71108

#### Specialty Hose Clamp Plier

This dual purpose plier, with side jaw design allows hose clamps to be applied or removed in confined areas. Pincers are held parallel to the hose.



**LIFETIME WARRANTY**

### KTI-70750

#### Spark Plug Boot Plier

Plier features insulated grips. Overall length: 8". U.S.-made



**MADE IN USA LIFETIME WARRANTY**

### KTI-73701

#### Universal Spark Plug Gap Tool

Measures in increments of one thousandth from .020 through .100.



KTI-73701-50 - 50-piece bulk pack

# Specialty Tools

## KTI-72765

### Mini Heavy-duty Circuit Tester

Tester is 5" long and includes 2" tempered probe and replaceable bulb. Works on 6 or 12 volt systems. Features 60" heavy-duty flexible wire lead with ground clip.

Replacement parts:

**KTI-72781** - Replacement bulb for models 72765, 72780, 72790, 72791 and 72792



## KTI-72770

### Circuit Tester

Tester features 48" extra long leads. Works on 6 or 12 volt systems.

Replacement parts:

**KTI-72771** - Replacement bulb for model 72770



## KTI-72780

### Heavy-duty Circuit Tester

Tester features 5' heavy-duty flexible wire, ground clips, tempered probe and replaceable bulb. Works on 6 or 12 volt systems. Spring strain relief on cord.

Replacement parts:

**KTI-72781** - Replacement bulb for models 72765, 72780, 72790, 72791 and 72792



## KTI-72782

### Heavy-duty Circuit Tester with 12' Retractable Wire and Clip

Can be used on cars, trucks, SUVs, boats, trailers, vans, RVs, motorcycles, snowmobiles and airplanes. Use the heavy-duty circuit tester to check electrical circuits and accessories on all 6 and 12 volt systems. Tester features a 12' retractable wire and battery clip, spring-supported strain relief, extra-sharp probe and a heavy-duty battery clip.



### Extra-long Circuit Testers

Specially designed to enable technicians to test hard to reach circuits that would not be accessible with standard testers. Features extra long, colored, insulated 7-1/2" probe and 60" heavy gauge flexible wire. Works on 6 or 12 volt systems.

Sold separately:

**KTI-72790** - Blue

**KTI-72791** - Red

**KTI-72792** - Yellow

**KTI-72781** - Replacement bulb for models 72765, 72780, 72790, 72791 and 72792





# Specialty Tools

**KTI-75310**

## 2-piece Universal Fuel Line Disconnect Set



2-piece universal fuel line disconnect set is designed to remove stubborn fuel lines from high-tech cars and trucks. Constructed of aircraft-grade aluminum for durability, yet makes them extremely lightweight and easy to use. The low-profile design provides access to the tightest spaces. The opening at the widest point is 3/4" and narrows to only 1/8". Set features a 90-degree fuel line disconnect tool and a straight fuel line disconnect tool.

Set includes (also available individually):

**KTI-75311** - 90 Degree Universal Tool, from 1/8" to 3/4"

**KTI-75312** - Straight Universal Tool, from 1/8" to 3/4"



**KTI-75320**

## 4-piece Radiator Disconnect Tool Set



4-piece set includes 4 sizes to depress clips ranging from 5/8" to 1". Contains a GM-, Ford-, large- and extra-large radiator disconnect tools. The tool is designed to completely fill the void in the connector to easily release the fastener. Unique 40-degree offset design allows users to work around obstructions in tight spaces.

Set includes (also available individually):

**KTI-75321** - Ford Disconnect Removal Tool

**KTI-75322** - GM Disconnect Removal Tool

**KTI-75323** - Large Disconnect Removal Tool

**KTI-75324** - X-Large Disconnect Removal Tool



**KTI-70720**

## Serpentine Belt Tool



Removes and installs serpentine belts. Releases tension on serpentine belts with spring loaded idler pulleys requiring a 15, 16 and 18 mm hex or 3/8 inch square drive. Provides extra coverage for most applications.

Set includes (also available individually):

**KTI-70721** - Long Wrench

**KTI-70726** - 15MM Socket

**KTI-70722** - Short Wrench

**KTI-70727** - 16MM Socket

**KTI-70723** - 13MM U-Type Wrench

**KTI-70728** - 18MM Socket

**KTI-70724** - 14MM U-Type Wrench

**KTI-70725** - 15MM U-Type Wrench



**KTI-70732**

## Tru-Grip Serpentine Belt Tool



Clamping jaw allows user to position serpentine belt without the belt slipping from the tool's grip. Tru-grip and long reach allows belt routing in limited-access areas. Constructed of lightweight alloy steel for durability and strength. Ergonomic handles for comfort and ease of use. Lifetime warranty.



**KTI-70730**

## Stretch Belt Installation Tool



Stretch belt installation tool is ideal for installing newer, patented Gates Micro-V Stretch Fit belts. Stretch belts are found on many models of vehicles with drive systems that do not require a tensioner (i.e. power steering, air conditioning, water pumps). Installs belts without twisting or breaking internal belt fibers. Durable construction features anodized aluminum body for corrosion resistance and a hardened steel pulley pivot.



**KTI-70731**

## European Stretch Belt Installation Tool



Stretch belt installation tool is ideal for installing stretch belts. For use on vehicles with larger pulleys primarily found on European vehicles. Stretch belts are found on many models of vehicles with drive systems that do not require a tensioner (i.e. power steering, air conditioning, water pumps). Installs belts without twisting or breaking internal belt fibers. Durable construction features anodized aluminum body for corrosion resistance and a hardened steel pulley pivot.



# Specialty Tools

**KTI-72200**

## Rotary-style Barrel Pump

Easy-to-operate crank handle rotary pumps are used as a siphon. Simply prime pump by turning crank handle several times: liquid automatically siphons to lower level. Rotary hand pumps fit 15-, 30- and 55-gallon drums. Cast iron rotary pump is ideal for heavy oil, machine oil and non-corrosive liquids. Barrel pump dispenses one gallon per 14 revolutions. Made with a cast iron body with steel inlet and outlet tubing. 2" bung adapter is perfect for drum openings.

Warranty information:  
90-day warranty.



**KTI-72205**

## Lever-style Barrel Pump

Two-piece, self-adjusting telescoping suction tube fits 15-, 30- or 55-gallon drums. Removable threaded spout. Pumps water based fluids, solvents, antifreeze, weak acids and all oil-based fluids. Pumps approximately 300cc liquid per stroke. Zinc plated for lasting quality. Features cushioned vinyl handle.

Warranty information:  
90-day warranty.



**KTI-72250**

## Siphon Pump

Multi-use pump transfers most liquids. Also pumps air for inflatables. Use for changing oil, siphoning gas, inflating sports balls and beach toys. Includes two 51" siphon hoses, 35" dipstick hose and adapter (for changing oil) and 17" air pressure hose.

Warranty information:  
90-day warranty.



**KTI-73900**

## Air-powered Piston Grip Grease Gun

Portable and nearly effortless to use, gun features rugged heavy-duty steel construction and 50-to-1 pressure ratio. Easily fill with 400cc bulk loading or standard 14 oz. cartridge. Air pressure ranges from 1,200 psi to 6,000 psi (with 30 to 160 psi air supply). Includes rigid and flexible extensions.

Warranty information:  
90-day warranty.



**KTI-74601-12**

## 12-pack Long Funnel - Rigid

Funnel Long Rigid - 4 1/2" Diameter x 19 1/2" Long  
Sold as a 12-pack. U.S.-made



**KTI-74602-12**

## 12-pack Long Funnel - Flexible

Deluxe flexible 2-piece funnel can be converted to a regular.  
Sold as a 12-pack. U.S.-made





# Specialty Tools

**KTI-74603**

## Funnel Pivoting "The Guzzler"



Large capacity funnel directs flow without spilling. Features ball pivot at base. U.S.-made



**KTI-74604**

## Funnel for 55-gallon Drum



Large capacity funnel screws directly onto 55 gallon drums. U.S.-made



**KTI-74630**

## 3-piece Funnel Set



KTI's "funnel for every job" set includes 3-1/2", 5-1/2" and 7-1/2" sizes.

**KTI-73730**

## Filter Wrench Nylon Strap



Fits all oil, air and fuel spin-on filters up to 6" diameter. Tool can be turned by a 1/2" square drive ratchet or a 3/4" open end wrench. U.S.-made



**KTI-73620**

## Oil Filter Pliers



Self adjusting spring action allows for a full range of filter applications. Heavy-duty forged handles with textured grip for strength and leverage. U.S.-made Use with 2-1/4" - 6" filters.



**KTI-73731**

## Heavy-duty Filter Wrench Nylon Strap



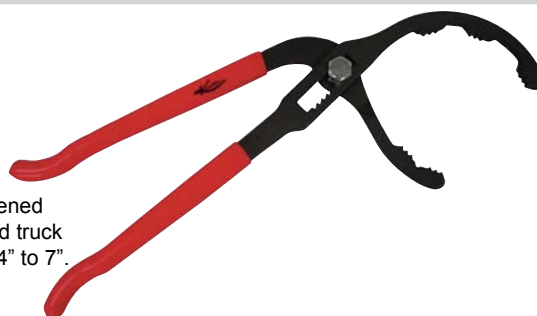
Designed for high torque requirements of truck filters, Forged steel handle, and extra length, sturdy strapping. A no-strip strap grips filters tightly. Wrench adapts to spin filters up to 9".



**KTI-73621**

## Truck Oil Filter Pliers

Truck and tractor filter pliers are capable of removing all agricultural and construction equipment and automotive canister-type filters. They are ideal for loosening over-tightened or seized filters, providing superior leverage for high-torque applications. Spring-loaded truck and tractor filter pliers work on auto filters as well as Cummins diesel filters. Range is 4" to 7". Boasts 17" extended-reach handles which allow users to access the toughest areas. Cushioned, ergonomic handle grips to reduce user fatigue.





# Specialty Tools

## Adjustable Oil Filter Wrenches

Removes oil filters in hard to reach areas. Tool features a swivel heat treated handle for easy access and durability and a unique yolk and link assembly for positive grip on filter. U.S.-made

- KTI-73601** - Oil Filter Wrench Adjustable from 2-7/8" to 3-1/4"
- KTI-73602** - Oil Filter Wrench Adjustable from 3-7/16" to 3-3/4"
- KTI-73603** - Oil Filter Wrench Adjustable from 4" to 4-3/8"
- KTI-73605** - Oil Filter Wrench for Trucks Adjustable from 4-5/16" to 4-3/4"
- KTI-73606** - Oil Filter Wrench for Trucks Adjustable from 5-1/4" to 5-3/4"



### KTI-73600

## 4-in-1 Oil Filter Wrench

This handy filter wrench boasts a vinyl handle to provide strength and better grip, and swivel movement to clear obstructions. A wide studded band prevents crushed filters. Mechanics who demand a tough and durable product can count on the 4-in-1's stainless, plated and easily interchangeable steel bands. Includes bands sized from 2-3/8"-4-3/8" (61 mm-111 mm).



## Cap-style Oil Filter Wrenches

Cap style design allows easy removal and installation from the end of the filter, even in tight locations.

- KTI-73613** - Cap Filter Wrench 65mm 14 Flute
- KTI-73614** - Cap Filter Wrench 74-76mm 15 Flute
- KTI-73615** - Cap Filter Wrench 76mm 14 Flute
- KTI-73616** - Cap Filter Wrench 93mm 15 Flute



## Oil Filter Cap Sockets

Designed to handle a variety of applications, oil filter cap socket is rugged, laser marked and works even in confined areas. Use to remove housings with cartridge-type oil filters.

- KTI-73618** - Oil Filter Cap Socket 32mm  
Applications: GM Ecotec 2.2L; Saturn: L-series (2001), Ion and Vue (2002-later); GM: Cavalier, Sunfire, Grand Am, Sonoma, S10, Allero (2002-later), Malibu (2002-2006); Pontiac: G6 and Solstice (2006); Chevrolet: HHR, Cobalt, Cobalt SS (2006); Saab: some models.

- KTI-73619** - Oil Filter Cap Socket 35/36mm  
Applications: 6.0L Ford diesel; F250, F350, F450 pickups; Excursion.





# Specialty Tools

**KTI-70060**

## Double Flaring Tool



Specially designed for double or single flare in copper, aluminum or soft steel brake line and brass tubing. Includes seven adapters in sizes ranging from 3/16"-5/8". Packaged in blow-molded case. Adapters available individually. Weight: 2.25 lbs.

- KTI-70060-1 - Wing Nut
- KTI-70061 - 3/16 Adapter
- KTI-70062 - 1/4 Adapter
- KTI-70063 - 5/16 Adapter
- KTI-70064 - 3/8 Adapter

- KTI-70065 - 7/16 Adapter
- KTI-70066 - 1/2 Adapter
- KTI-70067 - 5/8 Adapter
- KTI-70068 - Flaring Press
- KTI-70069 - Sizing Clamp



**KTI-70080**

## Double Flaring Tool U.S.-made



Professional double flare tool kit for fabricating double-compression lines (brake lines) or single-compression lines (fuel lines) in copper, steel, or aluminum. Kit features high-grade, alloy-steel center screw; plated, heat-treated, precision-ground swivel; and drop-forged, heat-treated yoke. Includes five adapters (3/16", 1/4", 5/16", 3/8" and 1/2"); each is laser engraved for easy identification. Packaged in blow-molded case. Adapters available individually. Weight: 2.3 lbs.



**KTI-70081**

## Professional Brake Flaring Tool

This tool will pay for itself with the first project, and it'll give you peace of mind knowing that your brake flares are of OE-precision quality and safety. Mounts in your vise to help you easily form 45-degree double, single and bubble flares in OE steel, stainless steel, and soft metal tubing. Use with 3/16", 1/4", 5/16" and 3/8" diameter lines...which means it will handle all your plumbing jobs from brake lines to transmission cooler lines and fuel lines. Turret-style design allows you to make those precision flares in minimal time. All the brake flaring forming dies you need are mounted right on the turret. T-handle screw clamp holds your line in place during forming.



**KTI-70085**

## ISO Flaring Tool

Kit allows mechanics to creates an ISO flare on brake lines without removing them from the vehicle. Although ISO flare is not the standard double flare, it is being installed on domestic and imported front-wheel drive cars and light trucks. Works on mild steel tubing (1.0 mm wall thickness). Kit includes yoke assembly, flaring bar, gauge/wrench and four adapters (4.75 mm 6 mm, 8 mm and 10 mm). Packaged in blow-molded case. Weight: 2.8 lbs.



# Specialty Tools

## KTI-70301

**Reversible Puller 3"**  
**2-jaw 2-ton**  
**4" Spread**  
**3-1/4" Reach**



Reversible jaws feature a wide face on one end and a narrow face on the other - it's like two tools in one. Grip tightens as pressure is applied. Tool manufactured with heat-treated, drop-forged, alloy steel. Spread: 4". Reach: 3-1/4".

**LIFETIME WARRANTY**

*\*Limited lifetime warranty on parts only.*

## KTI-70302

**Reversible Puller 3"**  
**2- or 3-jaw 2-ton**  
**4-3/4" Spread**  
**3-1/2" Reach**



Reversible jaws feature a wide face on one end and a narrow face on the other - it's like two tools in one. Grip tightens as pressure is applied. Tool manufactured with heat-treated, drop-forged, alloy steel. Spread: 4-3/4". Reach: 3-1/2".

**LIFETIME WARRANTY**

*\*Limited lifetime warranty on parts only.*

## KTI-70303

**Reversible Puller 4"**  
**2-jaw 4-ton**  
**6" Spread**  
**3-1/4" Reach**



Reversible jaws feature a wide face on one end and a narrow face on the other - it's like two tools in one. Grip tightens as pressure is applied. Tool manufactured with heat-treated, drop-forged, alloy steel. Spread: 6". Reach: 3-1/4".

**LIFETIME WARRANTY**

*\*Limited lifetime warranty on parts only.*

## KTI-70304

**Reversible Puller 4"**  
**2- or 3-jaw 5-ton**  
**7" Spread**  
**3-1/4" Reach**



Reversible jaws feature a wide face on one end and a narrow face on the other - it's like two tools in one. Grip tightens as pressure is applied. Tool manufactured with heat-treated, drop-forged, alloy steel. Spread: 7". Reach: 3-1/4".

**LIFETIME WARRANTY**

*\*Limited lifetime warranty on parts only.*

## KTI-70305

**Reversible Puller 6"**  
**2-jaw 5-ton**  
**6" Spread**  
**3-1/4" Reach**



Reversible jaws feature a wide face on one end and a narrow face on the other - it's like two tools in one. Grip tightens as pressure is applied. Tool manufactured with heat-treated, drop-forged, alloy steel. Spread: 6". Reach: 3-1/4".

**LIFETIME WARRANTY**

*\*Limited lifetime warranty on parts only.*

## KTI-70306

**Reversible Puller 6"**  
**2- or 3-jaw 5-ton**  
**6" Spread**  
**3-1/4" Reach**



Reversible jaws feature a wide face on one end and a narrow face on the other - it's like two tools in one. Grip tightens as pressure is applied. Tool manufactured with heat-treated, drop-forged, alloy steel. Spread: 6". Reach: 3-1/4".

**LIFETIME WARRANTY**

*\*Limited lifetime warranty on parts only.*



# Specialty Tools

## KTI-70311

**Adjustable Puller 4"**  
2-jaw 2-ton  
4" Spread  
3-1/2" Reach



Ideal for light duty gear pulling, such as electric motors and refrigeration applications. Spread: 4". Reach: 3-1/2". Capacity: 2 tons. U.S.-made.

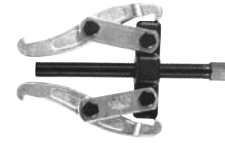
Replacement parts:	Qty Req.:
KTP-1204-1 - Yoke	1
KTP-1204-2 - Center Screw	1
KTP-1204-3 - Link	4
KTP-1204-4 - Bolt	4
KTP-1204-5 - Jaw	2
KTP-1204-6 - Nut	4



*\*Limited lifetime warranty on parts only.*

## KTI-70312

**Adjustable Puller 6"**  
2-jaw 5-ton  
6" Spread  
3-1/2" Reach



Ideal for most medium duty gear pulling tasks. Designed for maximum utility. Reversible jaws have a wide face on one end and a narrow face on the other. Spread: 6". Reach: 3-1/2". Capacity: 5 tons. U.S.-made.

Replacement parts:	Qty Req.:
KTP-1206-1 - Yoke	1
KTP-1206-2 - Center Screw	1
KTP-1206-3 - Link	4
KTP-1206-4 - Bolt	4
KTP-1206-5 - Jaw	2
KTP-1206-6 - Nut	4



*\*Limited lifetime warranty on parts only.*

## KTI-70313

**Adjustable Puller 7"**  
2-jaw 5-ton  
7" Spread  
5-1/2" Reach



Ideal for most medium duty gear pulling tasks. Offers a wide range of reach. Spread: 7". Reach: 5-1/2". Capacity: 5 tons. U.S.-made.

Replacement parts:	Qty Req.:
KTP-1206-1 - Yoke	1
KTP-1206-2 - Center Screw	1
KTP-1206-3 - Link	4
KTP-1206-4 - Bolt	4
KTP-1207-5 - Jaw	2
KTP-1204-6 - Nut	4



*\*Limited lifetime warranty on parts only.*

## KTI-70321

**Adjustable Puller 4"**  
3-jaw 2-ton  
4" Spread  
3-1/2" Reach



Three jaws provide extra stability, making this puller ideal for light duty gear pulling applications. Spread: 4". Reach: 3-1/2". Capacity: 2 tons. U.S.-made.

Replacement parts:	Qty Req.:
KTP-1304-1 - Yoke	1
KTP-1204-2 - Center Screw	1
KTP-1204-3 - Link	6
KTP-1204-4 - Bolt	6
KTP-1204-5 - Jaw	3
KTP-1204-6 - Nut	6



*\*Limited lifetime warranty on parts only.*

## KTI-70322

**Reversible Puller 7"**  
2- or 3-jaw 5-ton  
7" Spread  
3-1/2" Reach



Tool complete with versatile combination yoke that can be assembled to make either a 2-3 jaw puller. Reversible jaws for internal or external pulls. A 3-point pull provides extra power and stability when needed. Spread: 7". Reach: 3-1/2". Capacity: 5 tons. U.S.-made.

Replacement parts:	Qty Req.:
KTP-1407-1 - Yoke	1
KTP-1206-2 - Center Screw	1
KTP-1206-3 - Link	6
KTP-1206-4 - Bolt	6
KTP-1206-5 - Jaw	3
KTP-1204-6 - Nut	6



*\*Limited lifetime warranty on parts only.*

## KTI-70323

**Adjustable Puller 8"**  
2- or 3-jaw 5-ton  
8" Spread  
5-1/2" Reach



Tool complete with versatile combination yoke that can be assembled to make either a 2-3 jaw puller. A 3-point pull provides extra power and stability when needed. Spread: 8". Reach: 5-1/2". Capacity: 5 tons. U.S.-made.

Replacement parts:	Qty Req.:
KTP-1407-1 - Yoke	1
KTP-1206-2 - Center Screw	1
KTP-1206-3 - Link	6
KTP-1206-4 - Bolt	6
KTP-1207-5 - Jaw	3
KTP-1204-6 - Nut	6



*\*Limited lifetime warranty on parts only.*

# Specialty Tools

## KTI-70330

### Steering Wheel Puller U.S.-made



Pulls steering wheels on most common makes of automobiles and light/medium duty trucks. Tool designed to avoid damage to steering shaft threads. Includes five sets of side bolts. U.S.-made.

Replacement parts:

- KTP-187-1 - Cross Arm
- KTP-187-2 - Center Screw
- KTP-187-3 - Swivel and O-ring
- KTP-187-4 - Side Screw 5/16" - 18 x 4-1/2"
- KTP-187-5 - Side Screw 5/16" - 24 x 3-1/2"
- KTP-187-6 - Side Screw 3/8" - 16 x 4"
- KTP-187-7 - Side Screw M8 x 1.25 x 80mm
- KTP-187-9 - Bolts



*\*Limited lifetime warranty on parts only.*

## KTI-70300

### Pulley Puller and Installer Set



Complete set removes and installs most power steering and alternator pulleys on domestic vehicles. Works with traditional V-shaped pulleys and serpentine belt system pulleys. Packaged in blow-molded case. Weight: 1.85 lbs.

Replacement Parts:

- KTI-70300-1 - Puller body
- KTI-70300-2 - Washer
- KTI-70300-3 - Bearing
- KTI-70300-4 - Jaw & sleeve assembly
- KTI-70300-5 - Button
- KTI-70300-6 - Jack screw

- KTI-70300-7 - Screw
- KTI-70300-8 - Screw
- KTI-70300-9 - Screw
- KTI-70300-10 - Puller Pin
- KTI-70300-11 - Puller Pin
- KTI-70300-12 - Puller Pin



*\*Limited lifetime warranty on parts only.*

## KTI-70343

### Harmonic Balancer Installer



Easily installs balancers and drive pulleys that are pressed on the crankshaft. Includes eight threaded adapters: 7/16"-20; 1/2"-20; 9/16"-20; 5/8"-20; 3/4"-16; M12-1.5; M14-1.5; and M16-2.0. U.S.-made.

Replacement parts:

- KTP-188-1 - Center Screw
- KTP-188-2 - Forcing Nut
- KTP-188-3 - Thrust Bearing (old)
- KTP-188-3A - Thrust Bearing (new)
- KTP-188-4 - Cap Screw 3/8" - 24 x 5"
- KTP-188-5B - Adapter 7/16" - 20
- KTP-188-6B - Adapter 1/2" - 20
- KTP-188-7B - Adapter 9/16" - 18
- KTP-188-8B - Adapter 5/16" - 18
- KTP-188-9B - Adapter M12 x 1.5
- KTP-188-10B - Adapter M14 x 1.5
- KTP-188-11B - Adapter 3/4" x 16
- KTP-188-12B - Adapter M16 x 2
- KTP-188-13B - Adapter M10 x 1.5
- KTP-188-14 - Knurled Nut



*\*Limited lifetime warranty on parts only.*

## KTI-70344

### Harmonic Balancer Puller



Pulls harmonic balancers on most automobiles. Tool can be used on flywheels, gears, pulleys and other parts with tapped holes. Includes five sets of side bolts. U.S.-made.

Replacement parts:

- KTP-189-1 - Yoke
- KTP-189-2 - Center Screw
- KTP-189-3 - Swivel and O-ring
- KTP-189-4 - Side Screw 5/16" - 18 x 2"
- KTP-189-5 - Side Screw 3/8" - 24 x 2"
- KTP-189-6 - Side Screw 3/8" - 16 x 4"
- KTP-189-7 - Side Screw M8 x 1.25 x 80mm



*\*Limited lifetime warranty on parts only.*

## KTI-70348

### Steering Wheel Puller



Puller specially designed to prevent damage to steering shaft threads.



*\*Limited lifetime warranty on parts only.*

## KTI-70350

### Long-jaw Reversible Puller



Five-ton reversible puller easily removes and installs pressed-on power steering, alternator and air pump pulleys. Includes five-ton reversible puller that can be used as two- or three-jaw puller in eight different combinations.



*\*Limited lifetime warranty on parts only.*

## KTI-70355

### Pilot Bearing Puller



Use to remove fly wheel pilot bearings up to 7-1/2" long in tight spaces where a slide hammer just won't fit. Versatile tool also works as a bearing and bushing puller for generators and starters. Spread: 1/2" to 1-1/2" I.D. Weight: 2.3 lbs. U.S.-made.

Replacement parts:

KTP-14-1 - Yoke

KTP-14-2 - Body

KTP-14-3 - Pressure Screw Assembly

KTP-14-4 - Retaining Bar

KTP-14-5 - Jaw Screw

KTP-14-6 - Jaw (regular)

KTP-14-6A - Jaw (small)

KTP-14-7 - Pressure Nut

KTP-14-8 - Washer



*\*Limited lifetime warranty on parts only.*

## KTI-70356

### Pilot Bearing Slide Hammer



Center rod spreads forged steel jaws, pushing them out against the bearing for quick and easy removal of bearings and other parts located in tight spaces. Spread: 1/2" to 1-1/2". Weight: 3.7 lbs. U.S.-made.

Replacement parts:

KTP-15-1 - Center Rod Assembly

KTP-14-2 - Body

KTP-15-3 - Nut and Jaw Screw

KTP-15-4 - Hammer

KTP-14-5 - Jaw Screw

KTP-14-6 - Jaw (regular)

KTP-14-6A - Jaw (small)



## KTI-70360

### Pitman Arm Puller



Removes full-size Pitman arms from most cars and light trucks. Features drop-forged frame and carbon-steel drive screw. Opening: 1-5/16" (33 mm). Pull: 2-1/2" (64 mm). Weight: 1.85 lbs.



## KTI-70370

### MacPherson Strut Spring Compressor



Works with most MacPherson strut assemblies to quickly assist in replacement of bent struts, strut tubes and damaged filters while on or off the vehicle. Tool manufactured with Acme threaded screw for durability. Fits most automobiles, but should not be used on GM "A," "C," "J" or "X" body cars. Weight: 7 lbs.



## KTI-70365

### Pitman Arm Puller U.S.-made



Provides steady, smooth pull of a screw-type puller needed when tackling tougher, bigger jobs. Features heat-treated center screw and heat-treated, alloy steel, heavy-duty yoke. Weight: 2.1 lbs. U.S.-made



*\*Limited lifetime warranty on parts only.*

## KTI-70371

### MacPherson Heavy-duty Strut Spring Compressor



Works with most MacPherson strut assemblies to quickly assist in replacement of bent struts, strut tubes and damaged filters while on or off the vehicle. Tool manufactured with Acme threaded screw for durability. Fits most automobiles, but should not be used on GM "A," "C," "J" or "X" body cars. Weight: 7 lbs.



# Specialty Tools

**KTI-70372**

## Universal Strut Spring Compressor



Serves a wide range of MacPherson struts without the need to use special adapter shoes. Jaws are held in place by safety lock pins. Tool can be driven by hand or with an impact wrench. Compresses springs ranging from 4"-9" O.D. with wire diameters of 7/16"-11/16". Packaged in blow-molded storage case. Weight: 21 lbs.

**LIFETIME WARRANTY**

**KTI-70375**

## Coil Spring Compressor



Single action tool boasts strong, steel jaws that securely hook into coil springs for their removal and installation. Works with most domestic and some imported vehicles. Should not be used on MacPherson struts. Weight: 3.5 lbs. U.S.-made

**MADE IN USA LIFETIME WARRANTY**

**KTI-70380**

## Rear Axle Bearing Puller Kit



Make easy work of removing semifloating rear axle bearings. Set includes three sizes to service most domestic cars. Use with standard slide hammer.

Replacement parts:

- KTI-70380-1 - Bearing puller 1 7/8" max
- KTI-70380-2 - Bearing puller 2 3/8" max
- KTI-70380-3 - Bearing puller 2 7/8" max

**LIFETIME WARRANTY**

**KTI-70382**

## Bearing Separator 0 to 4-1/4"



Removes generator gears, bearing cones, bearings and similar parts that puller jaws cannot reach. Designed to reduce risk of damage to part. Flush knife-edge blades get behind work where most puller jaws cannot fit or grip. Manufactured with high quality, heat treated steel. Spread: 0"-4-1/4". Threaded holes: 5/8"-18".

- Replacement parts:
- KTP-503-1 - Body (pair)
  - KTP-503-2 - Side Screw
  - KTP-503-3 - Nut

**MADE IN USA LIFETIME WARRANTY**

**KTI-70383**

## Puller and Bearing Separator 0 to 2-1/4"



Removes generator gears, bearing cones, bearings and similar parts that puller jaws cannot reach. Designed to reduce risk of damage to part. Flush knife-edge blades get behind work where most puller jaws cannot fit or grip. Manufactured with high quality, heat treated steel. Spread: 0"-2-1/4". Threaded holes: 3/8"-16".

**LIFETIME WARRANTY**

**KTI-70384**

## Puller and Bearing Separator 0 to 4-1/4"



Removes generator gears, bearing cones, bearings and similar parts that puller jaws cannot reach. Designed to reduce risk of damage to part. Flush knife-edge blades get behind work where most puller jaws cannot fit or grip. Manufactured with high quality, heat treated steel. Spread: 0"-4-1/4". Threaded holes: 5/8"-18".

**LIFETIME WARRANTY**

## KTI-75201

### Ford Triton Spark Plug Extractor Set

KTI's spark plug extractor set is a must-have for servicing Ford Triton engines model year 2004 and later. This set easily extracts frozen and broken off spark plug sleeves from cylinder heads without removing the actual heads. A specially machined guide works with extra-long tap and extractor to ensure the job is done right. Avoid engine damage by using the KTI spark plug porcelain extractor set (KTI-75202) to remove broken porcelain before extracting spark plug sleeve. Lifetime warranty.



**LIFETIME WARRANTY**

## KTI-75202

### Ford Porcelain Spark Plug Extractor Set

KTI's spark plug porcelain extractor set works in conjunction with the KTI spark plug extractor set (KTI-75201). It is a must-have set for servicing Ford Triton engines model year 2004 and later. This set easily extracts broken porcelain from spark plug sleeves. Set uses a special bonding agent to extract porcelain from spark plug sleeve without pushing on the broken plug and potentially pushing it into the cylinder causing engine damage. Meets Ford TSB specifications. Lifetime warranty.



**LIFETIME WARRANTY**

## KTI-71519

### Tie Rod End Tool

Inexpensive and effective way to turn smooth tie rod ends. Able to remove the inner tie rod without removing the outer tie rod. Excellent for repairing rack seals. Simply slide the tool over the end and tighten the collar to allow access with a 3/8" drive extension. Fits most inner tie rods. Lifetime warranty.



**LIFETIME WARRANTY**

### Tie Rod and Ball Joint Separators

#### KTI-71501

Use to replace worn out tie rods and separate shock absorber links.  
Tine opening: 11/16". Overall length: 15-3/4".



#### KTI-71502

Use to replace worn out ball joints and remove CV drive shafts on FWD vehicles.  
Tine opening: 15/16". Overall length: 11-3/4".



**LIFETIME WARRANTY**



# Specialty Tools

## KTI-71550

### 4-in-1 Ball Joint Service Set

Removes and installs press fit parts, such as ball joints, universal joints and truck anchor pins without makeshift techniques. Takes out even rusted and corroded parts. Includes three receiver tubes (2-3/4" ID x 3" OD, 2-1/4" ID x 2-1/2" OD and 1-3/4" ID x 2" OD).

Replacement parts:

**KTI-71550-1** - Screw

**KTI-71550-2** - C-frame

**KTI-71550-3** - Removal adapter (right)

**KTI-71550-4** - Removal adapter (right)

**KTI-71550-5** - Installing cup adapter

**KTI-71550-6** - Receiving cup

**KTI-71550-7** - Installing cup adapter

**KTI-71550-8** - Pipe 1 3/4" x 2"

**KTI-71550-9** - Pipe 2 1/4" x 3"

**KTI-71550-10** - Pipe 1 3/4" x 2 1/2"



## KTI-71555

### Ball Joint Master Service Adapter Set

Kit includes all receiver tubes and removing/installing adapters needed to work on most GM, Ford and Dodge 2WD and 4WD pick-ups, vans and sport utility vehicles through 1997. Works on press fit upper and lower ball joints. Packaged with application chart.

Replacement parts:

**KTI-71555-1** - Receiving tube 3" OD x 2 3/4" ID

**KTI-71555-2** - Receiving tube 2 3/4" OD x 2 1/4" ID

**KTI-71555-3** - Receiving tube 2 1/2" OD x 2 1/4" ID

**KTI-71555-4** - Receiving tube 2 1/2" OD x 2 3/8" ID

**KTI-71555-5** - Receiving tube 2 1/4" OD x 2 1/4" ID

**KTI-71555-6** - Receiving tube 2 1/2" OD x 2 1/4" ID

**KTI-71555-7** - Receiving cup 2 1/4" OD x 1 3/8" ID

**KTI-71555-8** - Receiving cup 2 1/2" OD x 1 3/4" ID

**KTI-71555-9** - Installing tube 2" OD x 1 3/4" ID

**KTI-71555-10** - Installing tube 2" OD x 1 3/4" ID

**KTI-71555-11** - Receiving tube 2 1/4" OD x 2" ID

**KTI-71555-12** - Receiving tube 2 1/2" OD x 2 1/4" ID

**KTI-71555-13** - Remover/installer 1 1/4" OD x 3/4" ID

**KTI-71555-14** - Plug 3/8" OD



## KTI-70500

### Heavy-duty 10 lb. Dent Puller Kit

Kit contains 10 lb. slide hammer, two pipes (two-hole and hex nut), and chain with hook and five-plate puller attachments. Packaged in blow-molded case.

Replacement parts:

**KTI-70500-1** - Pipe 22.5mm x 590mm

**KTI-70500-2** - Hammer

**KTI-70500-3** - Pipe 22.5mm x 200mm

**KTI-70500-4** - Plate 6mm x 170mm

**KTI-70500-5** - Plate 6mm x 120mm

**KTI-70500-6** - Plate 6mm x 120mm

**KTI-70500-7** - Plate 6mm x 200mm

**KTI-70500-8** - Plate 3mm x 100mm

**KTI-70500-9** - Pipe - 2 hole 29mm x 40mm

**KTI-70500-10** - Chain and hook

**KTI-70500-11** - Hex nut

**KTI-70500-12** - Washer 3mm x 5mm x 24mm



## KTI-70510

### Slide Hammer Puller Kit

Easily removes flange-type axles, oil seals, bearings and other press fit parts. Includes: 5 lb. slide hammer; 8-function/3-jaw puller; 2-jaw puller; puller hook; rear axle puller; dent puller; and grip wrench adapter.

Replacement parts:

**KTI-70510-1** - T-bar

**KTI-70510-2** - Hammer

**KTI-70510-3** - Axle puller

**KTI-70510-4** - Grip wrench adapter

**KTI-70510-5** - Nut

**KTI-70510-6** - 2-jaw head

**KTI-70510-7** - 3-jaw head

**KTI-70510-8** - Screw and nut

**KTI-70510-9** - Attachment

**KTI-70510-10** - 4" jaw

**KTI-70510-11** - Tapping screw

**KTI-70510-12** - Hook



## MEGAHAMMER® KTI-70390 (3-piece set)



Removes seized bearing assemblies and associated components from a vehicle chassis for maintenance and repair. Minimizes cost and potential damage. Compatible with 3/4- and 1-ton American made trucks with 4-, 6- or 8-bolt patterns. Complete MEGAHAMMER™ kit includes 4-, 6-, 8-bolt head (KTI-70394), slide and stop assembly (KTI-70395) and hammer assembly (KTI-70396). 38" length, 65 lbs. Additional optional heads available.

Replacement parts:

**KTI-70395** - Replacement Slide and Stop Assembly

**KTI-70396** - Replacement Hammer Assembly

Warranty information:

1-year warranty.



### KTI-70391

## MEGAHAMMER® 5-bolt Head



Serves 1/2-ton Ford, GM and Dodge trucks. 8" diameter, 17½ lbs.

Warranty information:

1-year warranty.

**CAUTION:** Lock nut on hub removal tool must be tight to protect against thread damage. Slide shaft thread to be engaged into base plate thread so it is flush with inside edge of base plate thread. Use countersunk holes ONLY for proper grip on studs. Use outboard support to help prevent tool and wheel assembly from dropping to floor. Do not stand behind tool when in use. Tool is heavy. Use extreme caution when lifting. Keep extremities clear of pinch points. Always wear eye protection when using hub removal tool. Locking pin must be in place when not in use. Not responsible for damage to vehicle.

**WARNING:** Please follow instructions carefully to reduce risk of personal injury or possible damage to the vehicle.

### KTI-70392

## MEGAHAMMER® 8-bolt Head



Serves Ford Super Duty F250/F350 4x4 trucks. 8" diameter, 28½ lbs.

Warranty information:

1-year warranty.

### KTI-70393

## MEGAHAMMER® 6-bolt Head



For use primarily with Dodge Durango and Chevy Trailblazer. It will, however, accommodate any 6-bolt patterns with bolt circle diameters from 4" up to 6.75".

Warranty information:

1-year warranty.

### KTI-70394

## MEGAHAMMER® 4-, 6-, 8-bolt Head



Serves 3/4- and 1-ton American made trucks with 4-, 6- or 8-bolt patterns. 8" diameter, 17½ lbs.

Warranty information:

1-year warranty.

### KTI-70397

## MEGAHAMMER® 4-bolt Head



Primarily for use with Honda vehicles with 4-bolt patterns. It will fit 4-bolt patterns with bolt circle diameters from 4.2" up to 5.26".

Warranty information:

1-year warranty.