

CATALOG

EQUIPMENT AND PARTS

EFFECTIVE: 1 AUGUST 1999

- **AUTOMATIC PARTS WASHERS**
- **AUTOMATIC SPRAY GUN CLEANERS**
- **SOLVENT RECYCLERS**
- **SAND BLASTERS**
- **VACUUM EQUIPMENT**
- **PAPER / PLASTIC COMPACTORS**
- **OIL FILTER CRUSHERS**
- **OIL EXTRACTORS**

IN USA CALL TOLL FREE: 1-877-874-8890
IN CANADA CALL TOLL FREE: 1-800-417-9133

USA

171 COOPER AVE • TONAWANDA • NEW YORK • 14150
TEL. 716-874-8890 FAX 716-874-8893 E-mail: salesusa@uniram.com

CANADA

381 BENTLEY STREET • MARKHAM • ONTARIO • L3R 9T2
TEL. 905-477-5911 FAX 905-477-8922 E-mail: salescan@uniram.com

UNI-RAM CORPORATION

CONTENTS

	PAGE
"CASCADE" AUTOMATIC SPRAY GUN CLEANERS	3-5
AUTOMATIC PARTS WASHERS	6
SOLVENT RECYCLERS	7-8
RECLAIMING SAND BLASTERS	9
PORTABLE DUST/FUME EXTRACTORS	10
PRESSURE SAND BLASTERS	11-12
PORTABLE OIL EXTRACTORS	13
SPRAY GUNS	13
OIL FILTER CRUSHERS	14
PAPER COMPACTOR	14
PORTABLE SYPHON SAND BLASTERS	15
BLAST CABINETS	15

"CASCADE" AUTOMATIC SPRAY GUN CLEANERS plus SPECIAL UNITS FOR CLEANING CANS, POTS and MORE

Uni-ram has an automatic spray gun cleaner to clean both the interior and exterior of most types of spray guns as well as cups, pots, hoses and other mixing vessels. Some models have two separate tanks for cleaning with two different solvents at the same time. Syphon, pressure, HVLP and gravity spray guns can all be cleaned.

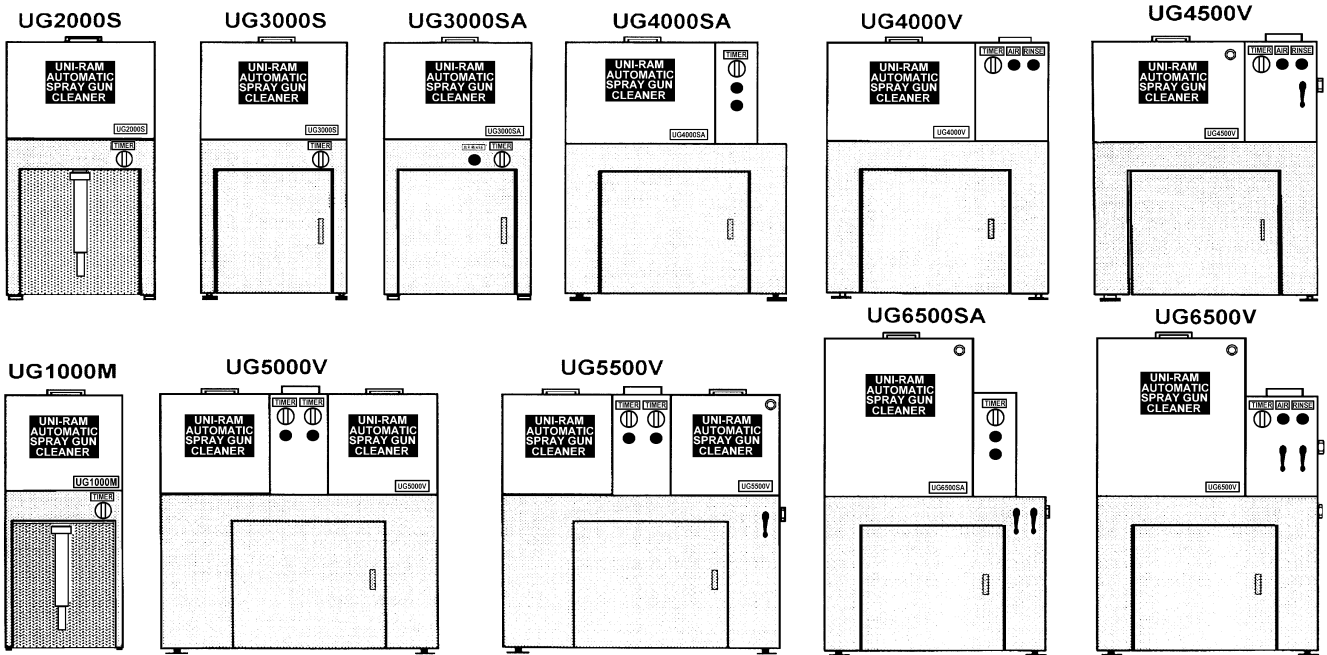
MAIN FEATURES – ALL MODELS

- REDUCE SOLVENT USAGE BY UP TO 90% COMPARED TO MANUAL CLEANING
- AUTOMATIC CLEANING, INSIDE AND OUTSIDE, IN LESS THAN 60 SECONDS
- SAFE, NON-ELECTRIC OPERATION WITH PATENTED AIR-TIMER AND PUMP
- SAFETY LID SWITCH FOR AUTOMATIC SHUT OFF WHEN OPENED
- RAISED PUMP FOR LONGER LIFE
- STAINLESS STEEL TANK
- PATENTED CLOSED CABINET DESIGN
- EASY TO REPAIR AND MAINTAIN

SPECIAL UNITS

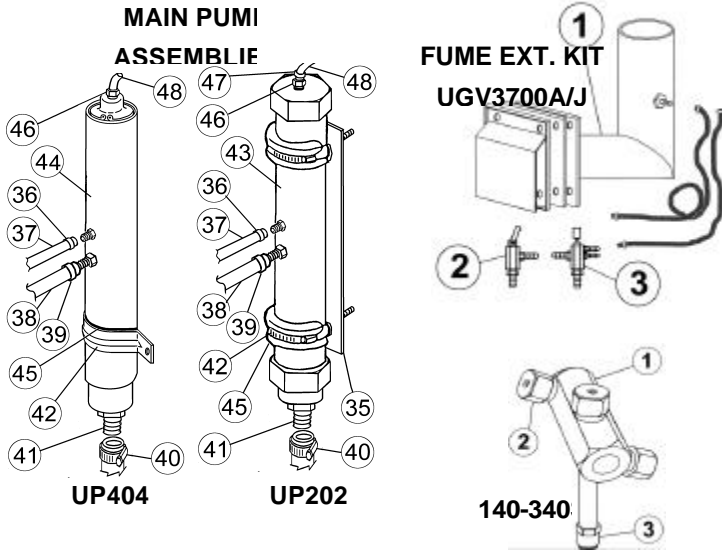
- FOR CLEANING PAINT CANS AND PRESSURE POTS AS WELL AS SPRAY GUNS AND HOSES

MODELS: UG	1000M	2000S	3000S	3000SA	4000SA	4000V	4500V	5000V	5500V	6500SA	6500V
SPECIAL FEATURES											
CABINET DOOR			X	X	X	X	X	X	X	X	X
S. STEEL LID			X	X	X	X	X	X	X	X	X
AIR RINSE				X	X	X	X	X	X	X	X
SOLVENT RINSE					X	X	X	X	X	X	X
FUME VENT						X	X	X	X		X
HOSE CLEANING							X		X	X	X
DUAL TANKS								X	X		
22" H TANK										X	X
ROTATING JETS (140-340S)	OPTIONAL	OPTIONAL	OPTIONAL	OPTIONAL	OPTIONAL	OPTIONAL	OPTIONAL	OPTIONAL	OPTIONAL	X	X
SPECIFICATIONS											
ITEMS CLEANED	1 GUN	2 GUNS	2 GUNS	2 GUNS	2 GUNS	2 GUNS	2 GUNS	4 GUNS	4 GUNS	1 POT, 1 GUN	1 POT, 1 GUN
NO. OF JETS	9	12	14	14	14	14	14	28	28	28	28
SHIP SIZE W X D X H"	18X17X41	19X19X42	19X19X42	19X19X42	28X17X42	28X17X42	28X17X42	35X19X42	35X19X42	28X17X50	28X17X50
SHIP WEIGHT LB/KG	42/19	47/21.4	54/24.5	56/25.5	70/31.8	77/35	80/36.4	110/50	124/56.4	92/42	92/42



FM FACTORY MUTUAL CERTIFI

PUMPS AND ACCESSORIES FOR "CASCADE" SYSTEMS



	ITEM	DESCRIPTION
FUME EXTR. KITS	1	UGV3700A Fume Extraction Kit, Auto
		UGV3700J Fume Extraction Kit, Manu
	2	140-880 Toggle Switch Assembly
	3	114-800V Lid Switch Assembly

PUMPS and PARTS

35	110-560	Mounting Assy, UG4/5000
	110-560N	Mounting Assy, UG1-3000
36	100-252	Hose Clamp 7mm
37	PET316X14	Hose, PE, 3/16" ID, 1/4" O
38	120-853	Solvent Hose, Pump - Tan
39	100-261S	Hose Clamp #4, 1/2" ID
40	110-261	Hose Clamp, #5, 3/4" ID
41	Z9125-6B	Hose Barb 3/8" x 1/4" NPT
42	100-561	Pump Clamp, "U" Type
	110-561	Pump Clamp, UP404-3C

MAIN PUMPS

NEW	43	UP202-4C	New, 2 Seals, Old Body
		UP404-4C	New, 2 Seals
		UP404-3C	New, 1 Seal
REBUILT		UP202-4CR	Rebuilt, 2 Seals, Old Body
		UP202-3CR	Rebuilt, 1 Seal, Old Body
DISCONTINUED		UP202-4A & UP202-4AR	

	45	110-565	Rubber Cushion, 202-3C/4
	46	Z9125-4B	Hose Barb 1/4"H - 1/4"MD
	48	222-227	Exhaust Silencer Tube
RINSE PUMP	58*	URP100-C	Rinsing Pump Assembly

TIMER	19*	115-200/K	Mechanical Timer Assemb
-------	-----	-----------	-------------------------

ROTATING	1	140-340S	Rotating Spray Jet Assy
SPRAY JETS	2	100-350	Spray Jet Assembly
	3	100-459	Extension Adapter

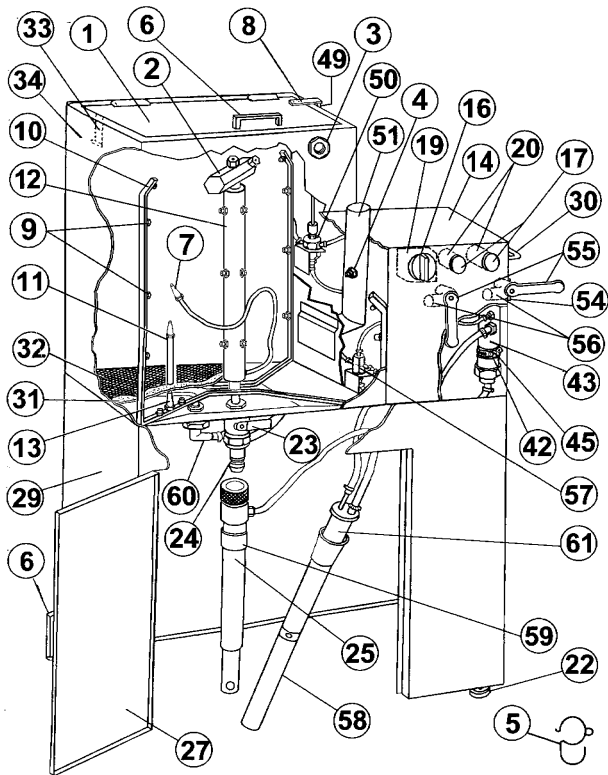
REPAIR KITS		222-100-3A	Rep. Kit w/o Shaft, 202-3C
		222-100-4A	Rep. Kit w/o Shaft, 202-4C
		444-100-4A	Rep. Kit w/o Shaft, 404-4C
		444-100-4B	Rep. Kit w. Shaft, 404-4C

LIFT KIT		PMPLIFTKIT	Pump Lift Kit
TRIGGER CLAMPS		120-350	Trigger Clamp (Pkg of 3)

FILTER PADS	REG	100-380	Filter Pad, Reg, Pkg of 10
		100-383	Filter Pad, Reg, Pkg of 3

MINI*		110-380M	Filter Pad, Mini, Pkg of 10
		110-383M	Filter Pad, Mini, Pkg of 3

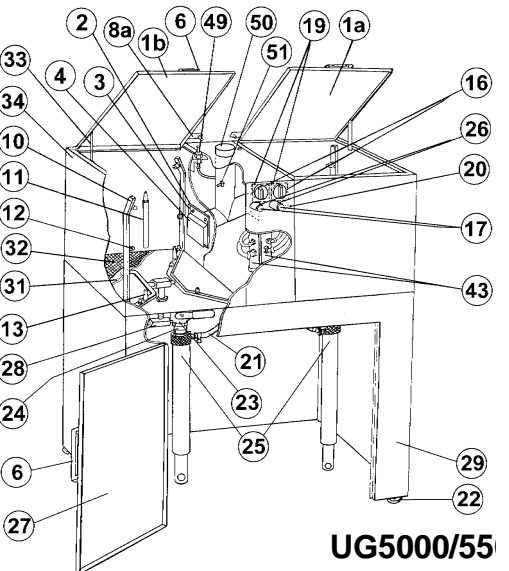
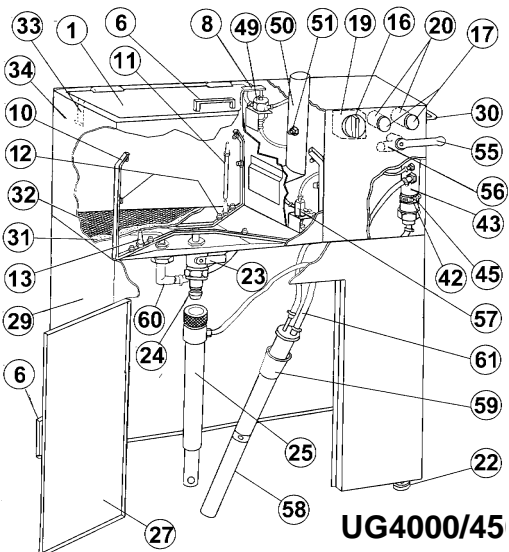
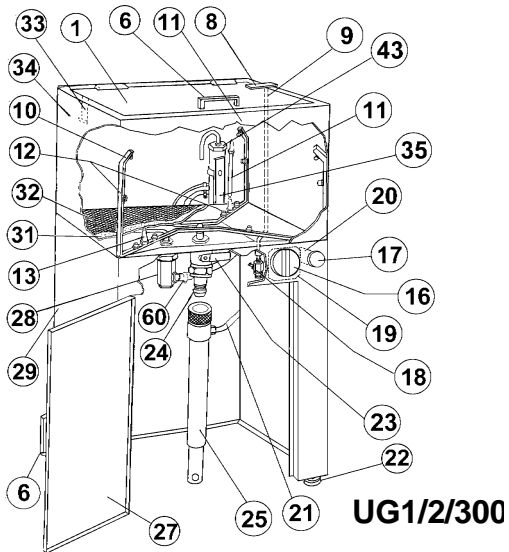
LARGE (O.D)**		100-380S	Filter Pad, Large, Pkg of 1
		100-383S	Filter Pad, Large, Pkg of 3



UG6500V

ITEM	DESCRIPTION
2	140-340S Rotating Spray Jet Assy
10	160-360AS Delivery Tube, Complete
12	160-460A Centre Delivery Tube
14	160-400 Side Control Box, Complete
34	165-100V Tank, Complete
54	160-170 Ball Valve Assembly
56	160-171 Ball Valve, 3 Way

PARTS FOR "CASCADE" SYSTEMS



	ITEM	PART NO.	DESCRIPTION
LIDS	1	110-320N	Lid Assembly fits UG1000M
		120-320N	Lid Assembly fits UG2000S
		130-320N	Lid Assembly fits UG3000S
		140-320N	Lid Assembly fits UG4000/4500
		150-320NR	Lid Assembly, RHS, fits UG5000/5500
		150-320NL	Lid Assembly, LHS, fits UG5000/5500
	2	36-031	Air Vent Hole Gasket, UG5000
	3	36-023S	Air Vent Cover Plate, UG5000
	5	110-565	Pump Clamp Cushion Rubber
D. TUBES	6	120-318	Lid or Door Handle
	7	120-627S	Lid Closure Spring Catch
	8	100-811	Lid Switch Plate, UG1/2/3000
		100-810A	Lid Switch Plate, Adjustable, UG4/5000
	9	100-820	Lid Switch Push Rod Set, UG1/2/3000
	10	W. JETS	Delivery Tubes, Set, with jets
		NO JETS	Delivery Tubes, Set, without jets
	12	100-350	Spray Jet Assembly
	13	110-356	Gun Cleaner Taper Nozzle
	14	100-450	Delivery Tube Centre Connector
S. PIPES	15	120-020H	Air Inlet Fitting with Screen
	16	115-260	Mechanical Timer Control Knob
	17	140-731	Air Rinse Control Knob
	20	115-400B	Rinse Valve Assy, 2-Way, Big Stem
	21	120-851	Solvent (Pump) Pick-up Hose
	22	110-531N	Adj. Leveler Foot, Short, UG2/3000
		110-531L	Adj. Leveler Foot, Long, UG4/5000
	23	10-171	Tank Drain Valve Assy (UG/UFC/PB)
	24	120-421	Quick Coupling Nipple (male)
	25	120-500	Solvent Suction Pipe Assy, UG1/2000
		130-500	Solvent Suction Pipe Assy, UG3000
		140-500	Solvent Suction Pipe Assy, UG4-6000
	26	115-320	Air Valve Assembly for Timer
	27	130-630N-Y	Door Assembly Complete, UG3000
		150-630N-Y	Door Assembly Complete, UG4,5000
	28	140-440	Triple Check Valve, 1/2/3/5000/5500
	29	110-620-Y	Base Cabinet, UG1000M
		130-620N-Y	Base Cabinet, UG2,3000S
		140-620N-Y	Base Cabinet, UG4000SA
	140-620V-Y	Base Cabinet, UG4000V	
	150-620V-Y	Base Cabinet, UG5000V	
SCREENS	30	130-681	Spray Gun Hanger Bar
	32	110-332	Flame Retardant Screen, UG1000M
		100-332N	Flame Retard. Screen, UG2,3,5
		140-332N	Flame Retard. Screen, UG4,6
TANKS	33	120-337S	Lid Opening Stop Arm
	34	110-300N	S. Steel Tank Assy, UG1000M
		130-300C	S. Steel Tank Assy, UG2000/3000
		140-300C	S. Steel Tank Assy, UG4000SA
		140-300CV	S. Steel Tank Assy, UG4000/4500
		150-300NL	S. Steel Tank Assy, UG5000/5500-L
	150-300NR	S. Steel Tank Assy, UG5000/5500-R	
LID SWITCHES	49	113-800	Lid Switch Assy: UG3000S
		113-800N	Lid Switch Assy: UG3000SA
		114-800	Lid Switch Assy, UG4000SA
		114-800V	Lid Switch Assy UG4000V

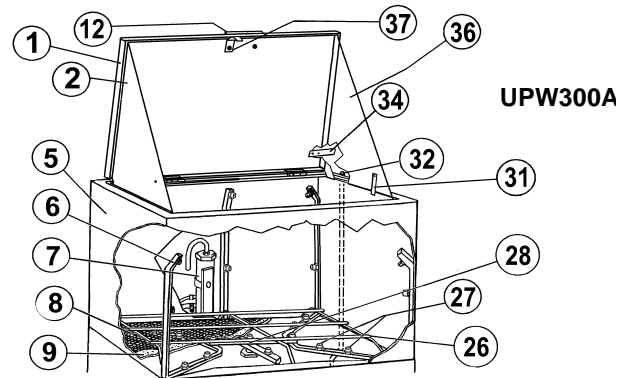
AUTOMATIC PARTS WASHERS

Uni-ram Parts Washers are high-quality units designed for automatic cleaning of industrial and automotive parts. All models have stainless steel tanks and a large number of high pressure spray jets in a staggered formation. A safety lid switch halts the spraying action when the lid is opened. Model UPW450A also has a flow-through brush for manual pre-washing or after-cycle touch-ups.

MAIN FEATURES – ALL MODELS

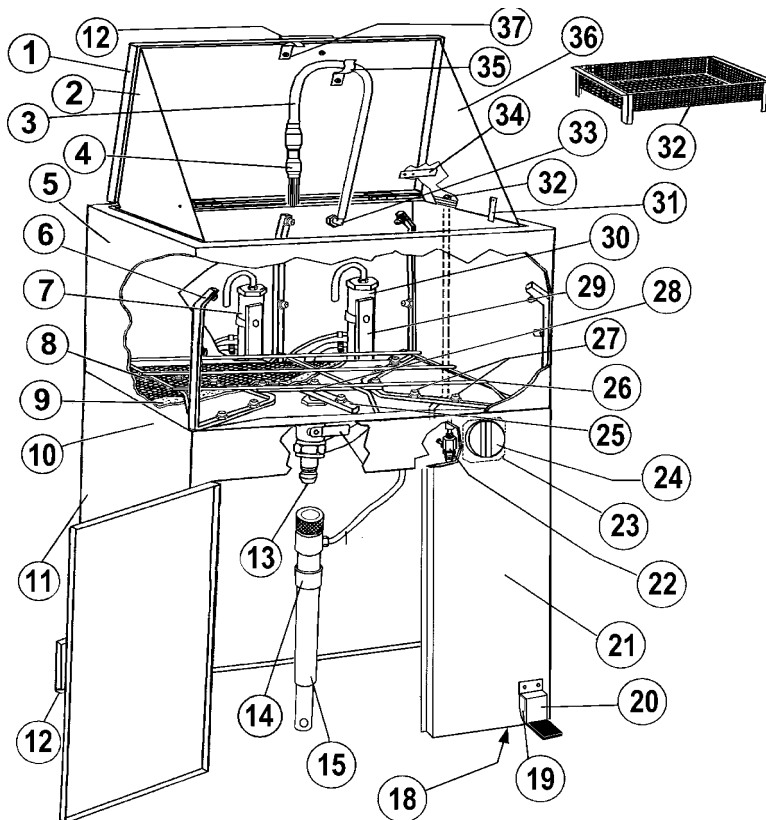
- STAINLESS STEEL TANK
- LID SAFETY SWITCH
- SAFE, AIR OPERATION ONLY
- OPTIONAL DIAPHRAGM PUMP
- USE WITH AQUEOUS or ORGANIC SOLVENTS
- WASHABLE FILTER PAD
- REMOVABLE SCREEN
- STANDARD PISTON PUMP
- 5 US GAL SOLVENT PAIL(S), 7 GAL OPTIONAL
- SMALL-PARTS BASKET
- REQUIRED AIR PRESSURE: 75-85 PSI
- AIR VOLUME: 2.0 CFM

MODEL UPW:	300A	400A	450A
TANK SIZE (W X D X H")	15.5X11X11.5	24X11X11.5	24X11X11.5
NO. OF SPRAY JETS	31	33	33
FLOW-THROUGH BRUSH	NO	NO	YES
NO. OF SOLVENT PAILS	1	2	2
NO. OF PUMPS	1	1	2
WEIGHT CAP. (LB/KG)	80/36	100/45	100/45
SHIP SIZE (W X D X H")	19X17X42	28X17X42	28X17X42
SHIP WEIGHT (LB/KG)	54/25	65/30	72/33



ITEM PART NO. DESCRIPTION

ITEM	PART NO.	DESCRIPTION
1	144-320	Lid Assembly
2	144-391	Side Shroud, Left
3	144-397	Hose for flow-through brush
4	144-399	Flow-through Brush
5	144-100C	Tank, Complete
6	133-360	Delivery Tube w. jets, Side
7,30	UP404-3C	Main Pump, 1 Seal
8	144-332	Work Screen (Flame Retard.)
9	144-381	Filter Pad
10	140-600N-Y	Cabinet, Complete
11	150-630N-Y	Door Assembly Complete
12	120-318	Lid or Door Handle
13	120-421	Quick Coupling Nipple (Male)
14	120-572F	Plug, Tapered, Suction Pipe
15	140-500	Solvent Suction Pipe Assy
16	120-853	Solvent Hose, Pump - Tank
17	110-531L	Adj. Leveler Foot, Long
18	112-500F	Rinse Valve Assy, Foot
19	100-768	Spring, Pedal Plate
20	100-750	Pedal Assembly
21	10-171	Tank Drain Valve Assy
22	113-800N	Lid Switch Valve Assy
23	115-200/K	Mechanical Timer Assy
24	115-261F	Timer Knob
25	133-370	Delivery Tube w. jets, Centre
26	144-369	Parts Support Rack
27	100-350	Spray Jet Assembly
28	144-365	Delivery Tube Cross
29	110-560	Pump Mounting Bracket
31	120-337S	Lid Opening Stop Arm
32	100-820	Lid Switch Push Rod



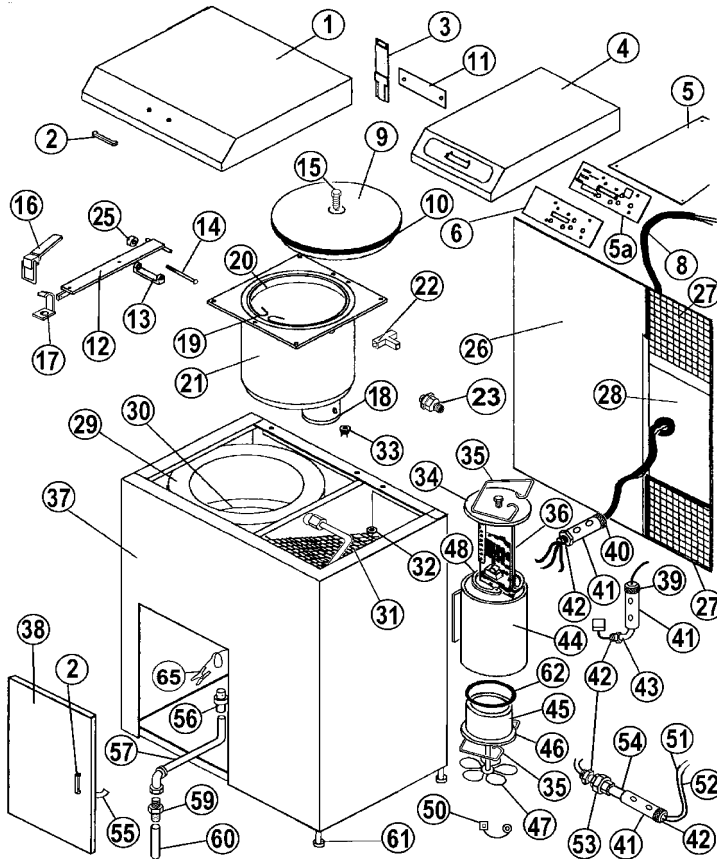
UPW450A

URS900 / URS950 SOLVENT RECYCLERS - 25 LITRE / 6.5 US GAL

- URS900 IS FULLY CERTIFIED FOR **CLASS 1, DIV 1, GROUP D** LOCATIONS
- URS950 IS DESIGNED FOR PARTS WASHER SOLVENTS WITH BPs UP TO 230°C (446°F)

• RECOVER ABOUT 95% OF CONTAMINATED SOLVENT

MODEL	URS900	URS950
APPLICABLE SOLVENTS	PAINT	PARTS WASHERS
INTRINSICALLY SAFE	YES	YES
MAX. TEMP. (°C/°F)	200/392	230/446
EXPLOSION PROOF	YES	YES
CERTIFIED - USA - UL	2208	PENDING
CERTIFIED - CANADA - CSA	C22.2 NO. 30	PENDING
POWER SUPPLY (VOLTS)	220/240	220/240
HEATER POWER (WATTS)	2100	2100
PROCESS SP. (US GAL PER HR)	2.0	2.0
SHIP SIZE (WDXH")	31X30X44	31X30X44
SHIP WEIGHT (LB/KG)	165/75	165/75



ITEM	PART NO.	DESCRIPTION
1	770-3310	Outer Safety Cover Assy
2	120-318	Pull Handle, Door & Lid
3	770-3370	Stay, Safety Cover
4	900-3411	Side Cover Assy
5	770-3450	Computer Board Assembly
6	770-3460	Switch Panel
8	700-4710	Power Cord Assy
9	770-2100	Tank, Lid Assy
9A	770-2110	Tank Lid, Top Plate
9B	770-2120	Tank Lid, Inner Plate
10	770-2150N	Tank Gasket, Black
11	770-3730	Friction Plate, Lid Stay
12	770-2230	Lid Holder Bar Assy
13	770-2251	Lower Hinge Bracket
14	99-436HH	Hinge Pin Bolt, 3/8" - 16
15	99-406SS	Hex bolt, 1/4"-20, 3/4"L, SS
16	900-2220	Lid Clamp Assy
17	770-2261	Front Clamp Catch
18	770-1365	Cover, Heater Terminal Box
19	770-9110	Retainer Frame, S. Steel

LINER BAGS		
20	770-9170	Liner Bags, Pkg of 10
	770-9130	Liner Bags, Pkg of 100
	770-9150	Liner Bags, Pkg of 250

21	770-1000	Tank & Heater Assy
22	770-1151	Vapor Outlet "T"
23	Z48-8B	Flare Connector, 1/2"
25	99-543DH	Lock Nut, Nylon, 3/8" Hex
26	770-3710	Back Panel
27	770-3740	Protective Screen
28	900-3751	Rear Access Screen
29	770-1210	Side Insulator Pad
30	770-1220	Bottom Insulator Pad
31	900-5110	Condenser Assy
32	770-5150	Condenser Thermostat
33	770-1810	Heater Thermostat
34	600-4113	End Cover, Body Tube
35	600-4131	Snap Ring, 3.75"OD
36	770-4310	Power Board, 240V
37	900-3000	Main Cabinet Assembly
38	770-3200	Door Assembly
39	600-4283	Cable Connector, Comp. Cable
40	770-4284	Cable Connector, Power Cable
41	770-4286	Seal Fitting
42	770-4281S	Nipple, 1/2" NPSx3/4" - 24
43	770-4282	Elbow, 90°, 1/2"
44	900-4110	Motor Housing Tube
45	770-4210	Fan Motor Assembly, 240V
46	600-4115	Motor Cover
47	770-4220	Fan Blade Assembly
48	600-4133	Snap Ring, Motor Support, 3.5"
50	770-4850	Wire, Heater - Thermostat
51	770-4820	Wire, Thermostat-PW Board
52	770-4810	Wire, Heater - PW Board
53	100-261S	Hose Clamp #4
54	600-4282	Street Nipple, 1/2"Mx1/2"F
55	120-627	Plate Spring

URS500 / URS550 SOLVENT RECYCLERS - 20 LITRE / 5 US GAL

- TESTED ACCORDING TO: UL STANDARD 2208 & CSA C22.2 NO. 30
- RECOVER ABOUT 95% OF CONTAMINATED SOLVENT

- COMPUTER CONTROLLED
- AIR COOLED, NO OIL
- WATER COOLED VERSION ALSO AVAILABLE

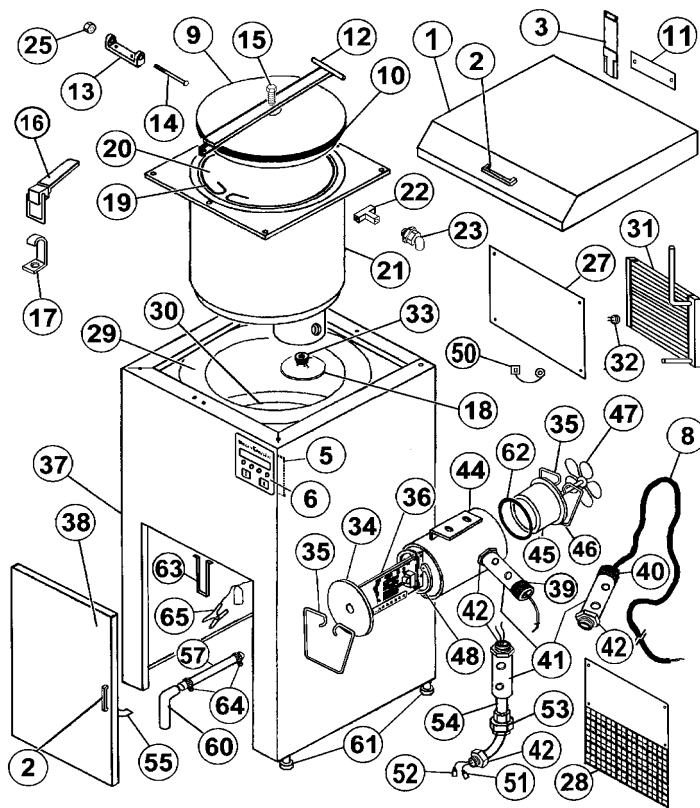
MODEL	URS500	URS550
APPLICABLE SOLVENTS	PAINT	PARTS WASHERS
INTRINSICALLY SAFE	YES	YES
MAX. TEMP. (°C/°F)	200/392	230/446
EXPLOSION PROOF	YES	YES
CERTIFIED - USA - UL	2208	PENDING
CERTIFIED - CANADA - CSA	C22.2 NO. 30	PENDING
POWER SUPPLY (VOLTS)	110/120	110/120
HEATER POWER (WATTS)	1500	1500
PROCESS SP. (US GAL PER HR)	1.5	1.5
SHIP SIZE (WDXH")	20X20X44	20X20X44
SHIP WEIGHT (LB/KG)	90/41	90/41

ITEM PART NO. DESCRIPTION

1	770-3310	Outer Safety Cover Assy
2	120-318	Pull Handle, Door & Lid
3	770-3370	Stay, Safety Cover
5	600-3460	Computer Board Assy, 5/600
6	600-3461	Switch Panel
8	700-4710	Power Cord Assy
9	770-2100	Tank, Lid Assy
9A	770-2110	Tank Lid, Top Plate
9B	770-2120	Tank Lid, Inner Plate
10	770-2150N	Tank Gasket, Black
11	770-3730	Friction Plate, Lid Stay
12	770-2230	Lid Holder Bar Assy
13	770-2251	Lower Hinge Bracket
14	99-436HH	Hinge Pin Bolt, 3/8" - 16
15	99-406SS	Hex bolt, 1/4"-20, 3/4"L, SS
16	900-2220	Lid Clamp Assy
17	770-2261	Front Clamp Catch
18	770-1365	Cover, Heater Terminal Box
19	770-9110	Retainer Frame, S. Steel

LINER BAGS

20	770-9170	Liner Bags, Pkg of 10
	770-9130	Liner Bags, Pkg of 100
	770-9150	Liner Bags, Pkg of 250



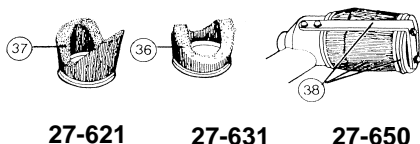
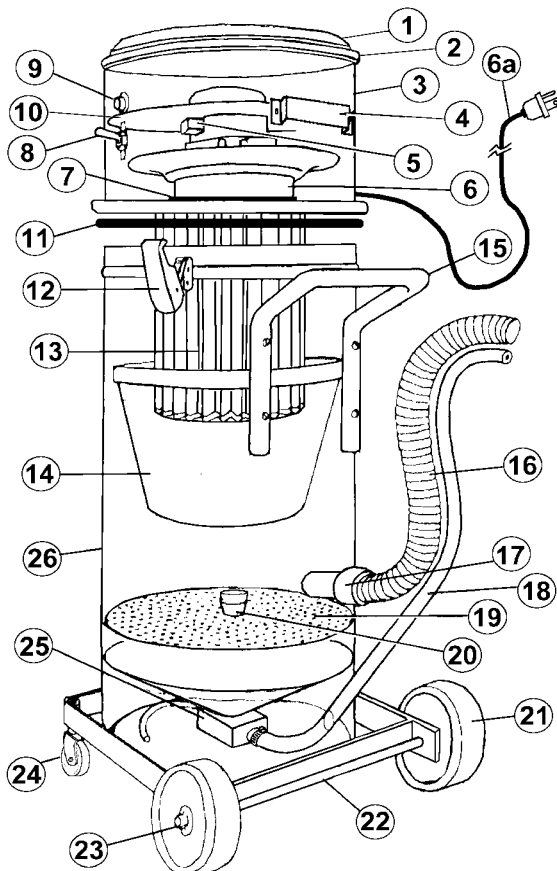
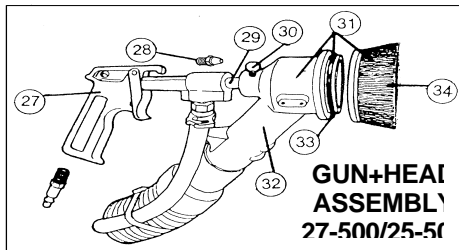
21	500-1100	Tank & Heater Assy
22	770-1151	Vapor Outlet "T"
23	600-1150	Elbow Fitting, Tank Outlet
25	99-543DH	Lock Nut, Nylon, 3/8" Hex
27	600-3131	Back Panel
28	600-3140	Rear Screen
29	600-1210	Side Insulator Pad
30	770-1220	Bottom Insulator Pad
31	500-5110	Condenser Assy
32	770-5150	Condenser Thermostat
33	770-1810	Heater Thermostat
34	600-4113	End Cover, Body Tube
35	600-4131	Snap Ring, 3.75" OD
36	500-4310	Power Board, 120V, 500/550
37	600-3000	Main Cabinet Assembly
38	600-3210	Door Assembly
39	600-4283	Cable Connector, Comp. Cable
40	770-4284	Cable Connector, Power Cable
41	770-4286	Seal Fitting
42	770-4281S	Nipple, 1/2" NPSx3/4" - 24
44	600-4110	Motor Housing Tube
45	500-4220	Fan Motor Assy, 120V, 500/550
46	600-4115	Motor Cover
47	600-4220	Fan Blade Assembly
48	600-4133	Snap Ring, Motor Support, 3.5"
50	770-4850	Wire, Heater - Thermostat
51	770-4820	Wire, Thermostat-PW Board
52	770-4810	Wire, Heater - PW Board
53	100-261S	Hose Clamp #4
54	600-4282	Street Nipple, 1/2"Mx1/2"F
55	120-627	Plate Spring
56	Z662-8	Tube Union, 1/2"x2
57	600-8121	Outlet Tube, Condenser
58	70125-8P	Hose Barb, 3/8" ID Hose

"BLAST VAC" RECLAIMING SAND BLASTERS

- REDUCE ABRASIVE CONSUMPTION BY 92%
- ELIMINATE NEED FOR PROTECTIVE CLOTHING and SEPARATE DUST REMOVAL

- CAN BE USED WITH MOST ABRASIVES INCLUDING GLASS BEADS, METAL SHOT, ALUMINUM OXIDE, NUT SHELLS, PLASTIC PEARLS, BAKING SODA ETC
- MOTOR SPEED: 19,600 RPM
- AIR FLOW: 8-22 CFM

MODEL	UR007-Y	UR005-Y
POWER	1000W, 120V	800W, 120V
ABRASIVE CAPACITY (LB)	15-40	10-30
NOZZLE/GUN (OD")	3/4"	5/8"
SYSTEM SIZE (ID")	1/4"	1/4"
HOSE LENGTH (FT)	8	8
SHIP SIZE (WXDXH")	20X18X44	20X18X36
SHIP WEIGHT (LB/KG)	69/31.4	64/29.1



ITEM	PART NO.	DESCRIPTION
	27-911	Abrasive, #6080, 25 LB Pail
	27-415	Blast Nozzle 1/2"OD, Threaded
	51-270	Valve Stem Assy for U5037 & U5047

UR007-Y		
	27-642	Spare Parts Kit
	3	27-100S Vac. Head Assy, Complete
	6	27-121 Motor Assy 1000W 110/120V
B. GUN	27	U5047 Blast Gun Assembly
	29	52-055 Steel Blast Nozzle
		52-020 Ceramic Blast Nozzle
		52-010 Carbide Blast Nozzle
B. HEAD	31	27-570 Blast Head Assembly
	32	27-571 Same as above without a brush
GUN+HEAD	27+31	27-500 Gun + Head Assy (U5047 + 27-570)

UR005-Y		
	25-642	Spare Parts Kit, 5/8"
	3	25-100 Vac. Head Assy, Complete
	6	25-121 Motor Assy 800W 110/120V
B. GUN	27	U5037 Blaster Gun Assembly
	29	51-055 Steel Blast Nozzle
		51-020 Ceramic Blast Nozzle
		51-010 Carbide Blast Nozzle
B. HEAD	31	25-560 Blast Head Assembly
	32	25-561 Same as above without a brush
GUN+HEAD	27+31	25-500 Gun + Head Assy (U5037 + 25-560)

MISCELLANEOUS		
	1	20-109 Moulding, Head Cover
	2	20-101-Y Head Cover
	4	110-313 Pull Handle
	5	27-129PS Brush Assembly
	6	27-122 Vacuum Motor Assy 1000W 220/240
		27-124 Vacuum Motor Assy 1000W 100V
	6A	27-151 Power Cord Assembly, 16', CSA
	7	27-103 Gasket Motor Mount
	8	27-131 Power Switch 120V
	9	27-141 Neon Lamp 100-120V
		27-142 Neon Lamp 220V
	10	27-112 Thermal Separator Plate
	11	27-193 Vacuum Head Seal Gasket
	12	27-218 Rim Clamp
FILTER	13	27-171 Cartridge Filter
	14	25-215 Debris Container
	15	27-217 Tubular Handle
HOSES	16+18	27-700 Complete Hose Assembly, 8'
	16	27-710 Vacuum Hose Assy (1-1/2"x8')
		27-712 Vacuum Hose Assy (1-1/2"x10')
	17	27-721 Hose End Cuff, 1.5"
	18	27-731 Abrasive Feeder Hose (1/21IDx8')
		27-732 Abrasive Feeder Hose (1/2IDx10')
MISC.	19	27-231 Abrasive Screen
	20	Z123 Abrasive Screen Knob
	21	11-161 Wheel, 6" Heavy Duty Industrial
	22	27-381 Axle Shaft 1/2" x 18" ZP
	23	27-384 Wheel Cap, High Impact, 1/2" Axle
	24	27-378 Swivel Caster, 2" Wheel

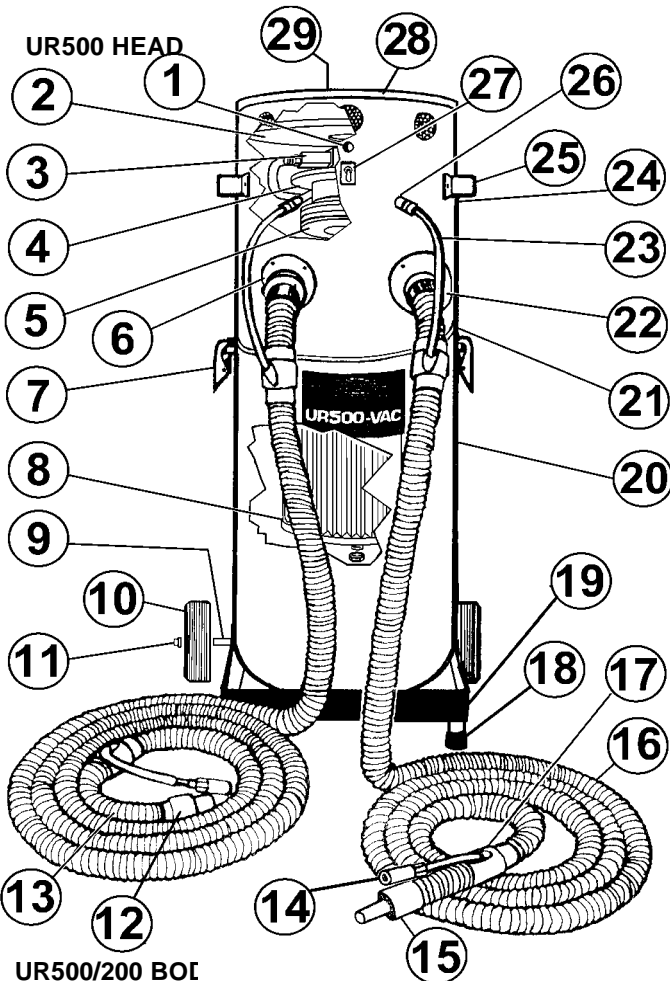
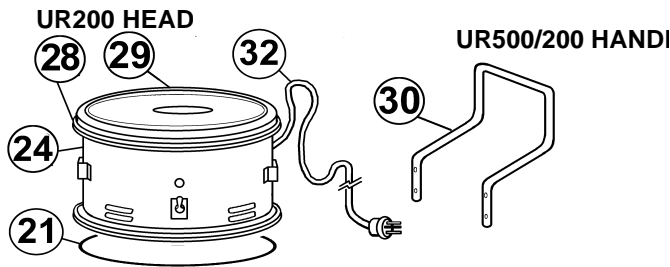
PORTABLE DUST/FUME EXTRACTORS

- AUTOMATIC ACTIVATION BY AIR TOOL
- TWO STATIONS OR OPERATORS (UR200/500)
- PORTABLE and VERSATILE

- POWER: 1350W, 110-120V
- MOTOR SPEED: 21000 RPM
- FUME GRADE FILTER

- AIR PRESSURE MAXIMUM: 150 PSI
- AIR FLOW: 100 CFM

MODEL UR:	500VAC	480VAC	200VAC
STATIONS/OPERATORS	2	1	2
HOSE LENGTH (FT)	16' X 2	16' X 1	16' X 2
BODY TYPE	S. STEEL	S. STEEL	PWD PAINT
USES DUST BAGS	YES	NO	YES
SHIPPING SIZE W X D X H "	19X19X44	19X19X44	19X19X44
SHIPPING WEIGHT LB/KG	54/24.5	50/22.7	64/29.1



	ITEM	PART NO.	DESCRIPTION
UR200	2	27-114	Separator Plate
	18	27-378	Swivel Caster, 2" Wheel
	19	27-300-BK	Base Assembly
	20	26-200-Y	Main Body Assembly
	21	27-193	Seal Ring
	24	27-010	Vacuum Head Assy
	28	20-109	Moulding, Vacuum Head
	29	20-101-Y	Vacuum Head Cover
UR500	2	26-114	Separator Plate
	4	27-102	Motor Mounting Plate
	18	10-168	Leg Support Ferrule
	19	26-300-BK	Base Assembly
	20	26-200S	Main Body Assy, S. Steel
	21	PEC14	Seal Ring
	24	26-111S	Vacuum Head S. Steel
	28	26-109	Moulding, Vacuum Head
	29	26-101	Vacuum Head Cover
		50-970	Clear Plastic Dust Bags (Pkg of

COMMON	ITEM	PART NO.	DESCRIPTION
	1	27-141	Neon Lamp 100-120V
		27-142	Neon Lamp 220V
	3	UFS25V-KIT	Flow Switch Assembly
	3A	22-200	Micro Switch Complete
	4	26-102	Motor Mounting Plate
	5	26-123	Vacuum Motor - 120V - 1350 W
		26-127	Vacuum Motor 240V - 1350 Wa
		26-125	Vacuum Motor - 100V - 1350 W
	6	26-270	Vacuum Outlet Assembly, Left
	6A	27-103	Gasket Outlet Mount
	7	27-218	Rim Clamp
FILTERS	8	27-175	Cartridge Filter, Large
		27-177	HEPA Filter, Optional
	9	27-381	Axle Shaft 1/2" x 18" ZP
	10	11-161	Wheel, 6" Heavy Duty Industrial
	11	27-384	Wheel Cap, High Impact, 1/2" A

HOSES & PARTS	ITEM	PART NO.	DESCRIPTION
	12	26-721	Hose Cuff 1.25"
	13	26-718	Vacuum Hose, 1.25" ID, Short F
	14	QCM14MT	Quick Coupling, 1/4", MPT
	15	26-726	Hose Cuff Reducer, 1.5" - 1.0" (
HOSE ASSEMB.	16	26-700	Hose Assembly, Complete, 16'
		26-700/24	Hose Assembly, Complete, 24'
		26-700/32	Hose Assembly, Complete, 32'
	16A	26-711	Vacuum Hose, 1.25" ID, Long F
	16B	26-701	Vacuum Hose, 1.25" ID, Per Fo
	17	26-725	Hose Connector
	22	26-260	Vacuum Outlet Assembly, Right
	23	26-751	Air Hose, 3/8" ID
	23A	PET14X38	Hose 3/8" OD, Per Foot

MISC	ITEM	PART NO.	DESCRIPTION
	25	NP-HAND572	Handle, Chrome Plated
	26	QCE28LB	Quick Coupling, 3/8" Female

PRESSURE SAND BLASTERS

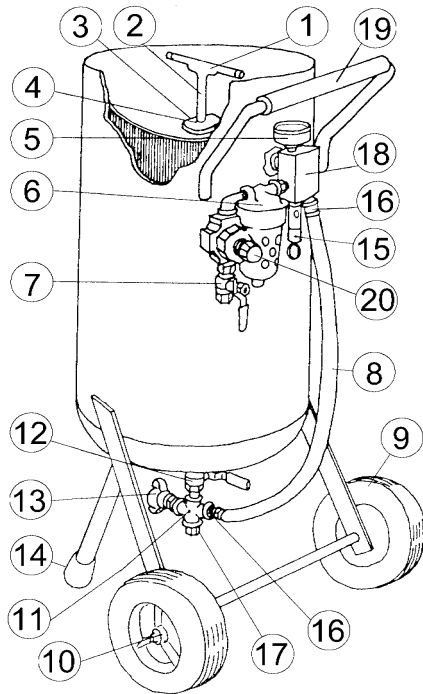
Uni-ram Pressure Sand Blasters are portable, rugged, efficient tools for removing dirt, rust, paint and other materials from all kinds of surfaces.

MAIN FEATURES – ALL MODELS

- SUITABLE FOR USE WITH MANY ABRASIVES INCLUDING: SILICA SAND, GLASS BEADS, METALSHOT, ALUMINUM OXIDE, NUT SHELLS, BAKING SODA
- MAINTENANCE-FREE REMOVEABLE FILLER PLUG
- ABRASIVE FLOW CONTROL VALVE
- HEAVY DUTY 4-PLY HOSE
- WORKING PRESSURE: 125 PSI
- AIR INLET SHUT OFF VALVE
- PORTABLE WITH HEAVY DUTY WHEELS
- PRESSURE RELEASE VALVE (140 PSI)
- PRESSURE GAUGE
- DURABLE POWDER PAINT
- FUNNEL TOP DESIGN

MODEL	U100-0	U100-S	U103-0	U103-S	U200-0	U200-S	U300-0	U300-S
SPECIAL FEATURES								
NOZZLE END SHUT OFF	NONE	U5000*	1/2" STEEL	U5000*	1" BRASS	U5000*	1" BRASS	U5000*
MOISTURE FILTER			X	X	X	X	X	X
QUICK COUPLINGS			X	X	X	X	X	X
PRESSURE REGULATOR					X	X	X	X
SPECIFICATIONS								
CAPACITY (LB)	90-100	90-100	100-110	100-110	195-205	195-205	260-305	260-305
HOSE LENGTH (FT)	8	8	10	10	15	15	20	20
SHIPPING SIZE W X D X H "	17X17X35	17X17X35	17X17X35	17X17X35	24X22X46	24X22X46	24X22X46	24X22X46
SHIPPING WEIGHT LB/KG	55/25	55/25	58/26.4	58/26.4	98/44.5	98/44.5	138/62.7	138/62.7
NO. OF NOZZLES (10-260)	2	2	3	3	4	4	4	4

*U5000 Safety Shut Off; also called "safety blast hand control", "dead man switch", "squeezer gun"



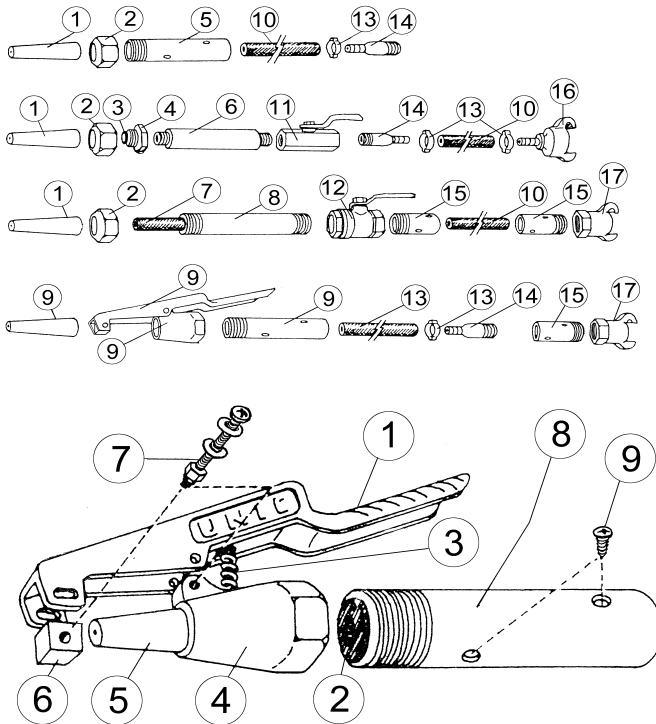
ITEM PART NO. DESCRIPTION

1	10-120	T-Handle Stem Filler Valve Complete
2	10-125	T-Handle Only
3	10-121	O-Ring Gasket, Filler Plug
4	10-128	Filler Valve Plug Block
5	10-131	Heavy Duty Pressure Gauge
6	10-220	Moisture Filter (U103)
6	12-220	Moisture Filter (U200, U300)
7	10-231	Air Shut Off Ball Valve 3/8"
8	11-241	Air Pressure Input Hose (U100)
8	12-241	Air Pressure Input Hose (U200)
8	13-241	Air Pressure Input Hose (U300)
9	11-161	Wheel, 6" Heavy Duty Industrial, U100
9	12-162	Wheel, 8" Heavy Duty, 5/8" Axle, U200
9	13-161	Wheel, 10" Heavy Duty, 1/2" Axle, U300
10	27-384	Wheel Cap, High Impact, 1/2" Axle
11	10-176	Cross Union Connector
12	10-171	Sand Flow Control Valve with Fitting
13	10-180	Tank Coupling, QC, Male, 1/2"
14	10-168	Leg Support Ferrule
15	10-251	Pressure Release Valve (140 PSI)

PRESSURE SAND BLASTERS - U100, U200, U300

REPLACEMENT HOSE ASSEMBLIES

PART NUMBER	10-150	10-151	10-152	10-153	10-154	10-155
HOSE LENGTH (FT)	8	10	15	20	10	15
CONNECTORS	THREADED	QUICK	QUICK	QUICK	QUICK	QUICK
NOZZLE END ON/OFF CONTROL	NONE	1/2" STEEL	1" BRASS	1" BRASS	U5000*	U5000*
MODEL	U100-0/S**	U103-0	U200/300-0	U200/300-0	U200/300-S	U200/300-S



U5000 SAFETY SHUT OFF

ITEM PART NO. DESCRIPTION

	UBN100-0	Blast Nozzle Assembly, U100
	UBN103-0	Blast Nozzle Assembly, U103
	UBN300-0	Blast Nozzle Assembly, U300
1	10-260	Ceramic Nozzles (see below)
2	10-501	Nozzle Retainer Nut
3	10-516	Bushing, Rubber, Short
4	10-511	Reducer Holding Nut
5	50-401	Handle Tube, Plated
6	10-420	Handle Tube, Plastic Cover
7	10-517	Bushing, Rubber, Long
8	10-431	Handle Tube, Threaded
9	U5000	Safety Shut Off (Hand Control)*
10	10-159	Hose per Foot, 1/2" ID/1" OD
11	10-230	On/Off Control, 1/2" Carbon Steel
12	10-233	On/Off Control, 1" Brass
13	10-246	Hose Clamp, Crimp Type, 1/2"
14	10-281	Hose Connector, Male, Barb

ITEM PART NO. DESCRIPTION

	U5000	Safety Shut Off, Complete
1	50-101	Lever Handle
2	50-501	Seal Washer
3	50-301	Return Spring
4	50-201	Retainer Nut
5		Ceramic Nozzles (see below)
6	50-002	Seal Block
7	50-590	Bolt, Nut and Washer Assy

EXTENSION HOSES

PART NO.	LENGTH	CONNECT
10-157	10'	QUICK
10-158	20'	QUICK

CERAMIC NOZZLES

PART NO.	ID (")	CFM @ 125 psi
#1 - 10-263	3/32	10
#1 - 10-260†	1/8	28
#1 - 10-264	5/32	47
#1 - 10-261	3/16	70
#1 - 10-262	1/4	125
#1 - 10-265	5/16	187

HOODS and LENSES

PART NO.	DESCRIPTION
10-300	Cotton hood with 4 lens
10-301	Cotton hood, 4 lens, h. hat
10-305	Lens for hood, 5x6.5", one
10-306	Lens, 5x6.5", Pkg of 10
10-400	Vinyl hood with back vent

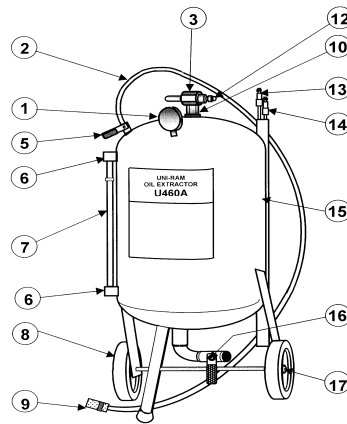
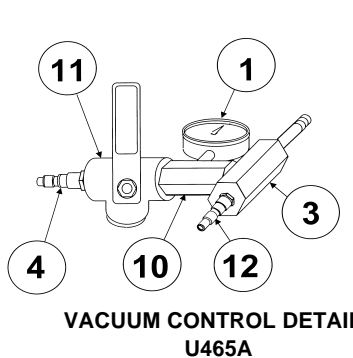
TUNGSTEN CARBIDE NOZZLES

PART NO.	DESCRIPTION and ID (")
10-020S	Short Nozzle, 1/8
10-030S	Short Nozzle, 3/16
10-040	Long Nozzle, 1/4

PORTABLE OIL EXTRACTORS - U460A, U465A, U480A

- REMOVE OIL, WATER OR AIR FROM CRANK CASES, GEARS, TRANSMISSIONS, AIR CONDITIONERS ETC
- PORTABLE and SELF-CONTAINED
- SUITABLE FOR MARINE USE
- NON-ELECTRIC, AIR OPERATED ONLY
- PRESSURIZED DRAINAGE (U465A ONLY)

MODEL	U460A	U465A	U485A
CAPACITY (GAL)	7	7	15
TANK DRAINAGE	GRAVITY	PRESSURE	PRESSURE
SHIP SIZE (W X D X H")	18X16.5X41	18X16.5X41	
SHIP WEIGHT (LB/KG)	43/19.5	54/24.5	77/35



ITEM PART NO. DESCRIPTION

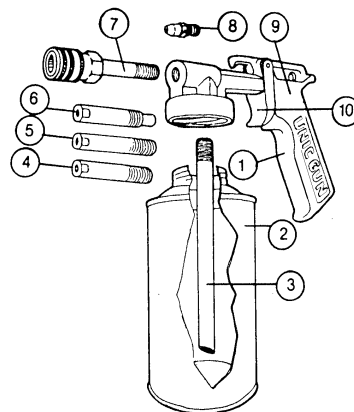
1	40-301	Vacuum Gauge
2	40-560	Hose Assy, 6', Standard
	40-570	Hose Assy, 10'
	40-580	Hose Assy, 15'
3	40-200N	Vacuum Generator Assy
4	ZDCP-21	Male Nipple, Quick Coupling
5	10-231	Intake Valve Assembly
6	ZB669-8B	Elbow, Oil Level Gauge
7	46-711	Oil Level Gauge Tube
8	11-161	Wheel, Heavy Duty, 6"
9	51-060	Quick Connect Coupling, Female
10	46-400	Check Valve Assy, U465A
11	145-170	3-Way Valve Assy, U465A
12	ZDCP-21	Male Nipple, Quick Coupling
13	40-610	Wand Assy, 1/4" X 29", Standard
	40-630	Wand Assy, 1/4" X 48"
	40-640	Wand Assy, 1/4" X 60"
14	40-600	Wand Assy, 1/4" X 87"

SPRAY GUNS FOR PAINTING and SAND BLASTING

MODEL	U5020	U5030	U5025	U5027	U5035	U5036	U5037
DESCRIPTION	"SCHUTZ" SYPHON GUN	"L'L SANDY" SAND BLASTER (U5020+51-206)	CAVITY SPRAY GUN, LOW VISCOSITY	CAVITY SPRAY GUN, HIGH VISCOSITY	GUN FOR PORT-A-BLAST KIT	GUN FOR SYPHON BLASTERS	GUN FOR UR005-Y
NOZZLE PART #	27-415	27-415	51-043	51-044	27-415	51-035	51-055
NOZZLE SIZE (OD")	1/2	1/2	1/4	1/4	1/2	1/2	5/8
NOZZLE TYPE	THREADED	THREADED	THREADED	THREADED	THREADED	SLIP-IN	SLIP-IN
JET PART #	51-252	51-252	51-253	51-257	51-252	51-252	51-252
JET SIZE (ID")	1/8	1/8	7/128	3/32	1/8	1/8	1/8



U5030, U5025, U5027

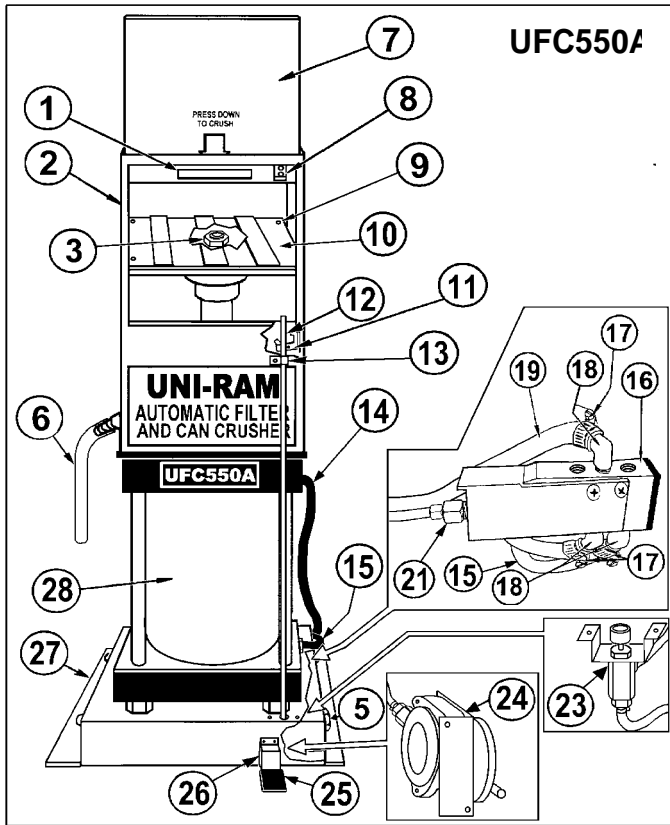


ITEM PART NO. DESCRIPTION

1	50-210	Gun Body Assy with Screw Cap
2	51-206	Canister, 1 Litre, Metal
3	51-241	Suction Pipe
4	51-055	Steel Nozzle, 5/8"OD, Push In
5	27-415	Nozzle, 1/2"OD, Threaded
6	51-035	Nozzle, 1/2"OD, Slip In
7	51-043	Nozzle with Insert for U5025
	51-044	Nozzle with Insert for U5027
8	51-252	Air Jet, 1/8" ID for U5020/30
	51-253	Air Jet, 7/128" ID for U5027
	51-257	Air Jet, 3/32" ID for U5025
9	51-310	Air Valve Kit, U5020/30/35/37
	52-310	Air Valve Kit, U5047
10	51-221	Trigger Set
	51-270	Valve Stem Assy for U5035/37/47
	U5025-12	Long Wand, 5/16 x 48"
	U5025-16	Short Hook Wand, Flexible, 5/16"
	U5025-20	Short Straight Wand, Flexible, 5/16"
	U5025-24	Short Wand, 5/16 x 24"
	U5027-12	Long Wand, 3/8 x 48"

OIL FILTER CRUSHERS - UFC550A and UFC850A

- REDUCE FILTER SIZE BY 75%
- RECOVER ABOUT 95% OF OIL
- SAFETY VALVE PREVENTS OVERLOAD
- OPERATING PRESSURE: 160-175 PSI
- AIR OPERATED, NON-ELECTRIC
- SUITABLE FOR AUTOMOBILES AND LIGHT TRUCKS
- FILL RAM, NO PISTON ROD
- SELF LUBRICATING
- SAFETY DOOR LOCK



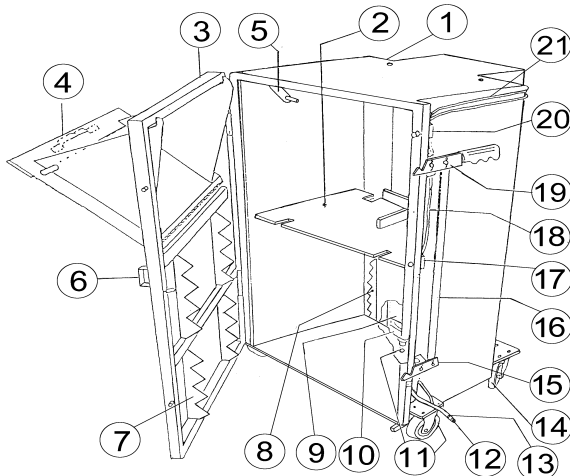
PART NO	UFC550A	UFC850A
CAPACITY	5 TONS	10
MAX FILTER (DIA" X H")	9.8 X 8.0	13.75
SHIP SIZE (WXDXH")	15X15X38	15)
SHIP WEIGHT (LB/KG)	350/159.1	7)

ITEM	PART NO.	DESCRIPTION
1	950-1139	Handle, Sliding Door
2	950-1110	Main Body Assy
3	950-1129	Nut, Cylinder Shaft, 42mm-2
4	950-1120	Compact Plate Assy
5	110-472	Union Nipple Hex, Brass
6	950-1107	Hose, Oil Drain, 5/8"x16'
7	950-1130	Sliding Door Assy
8	950-1135	Safety Lever
9	99-403DT	Screw, Pan HD, 1/4"x3/8"L
10	950-1123	Unloading Plate
11	950-1150	Door Locking Bracket Assy
12	950-1180	Push Rod Set, Safety SW
13	100-836	Guide Clamp. Push Rod.
14	950-1148	Hose, A-Cylinder Down, 3'
15	950-1149	Hose, B-Cylinder Up, 2'
16	950-1141	4-Way Valve, 5-port, SMC
17	110-261	Hose Clamp, Liquid Hose
18	Z9125-6B	Hose Barb, 3/8H-1/4MP.BRAS
19	950-1147	Hose, Inlet-Switch, 6"
21	HBM-316A	Hose Barb, 3/16"H-1/8"MNPT
22	100-252	Hose Clamp, 7mm
23	113-800V	Lid Switch Assy 4-W, 1-Out
24	950-1170	Mesh, Timer Assy

PAPER COMPACTOR - UTC900R

- COMPACTS PAPER, PLASTIC AND CARD BY UP TO 95%
- AIR OPERATED, LOW PROFILE, DOUBLE RAM ACTION
- OPERATES WITH 120-150 PSI
- DUAL SAFETY SWITCHES
- COMPACTING FORCE: 3000 LB
- FRONT ENTRY FOR EASE OF USE

PART NO	UTC900R	TWN-2500
DESCRIPTION	COMPACTOR	TWINE (2500')
SHIP SIZE (WXDXH")	34X24X46	6X6X8
SHIP WEIGHT (LB/KG)	325/147.7	-



ITEM	PART NO.	DESCRIPTION
1	70-8100	Main Body Assembly
2	70-8040	Compactor Plate Assembly
3	70-8090	Door Assembly
4	110-313	Hopper Handle
5	70-8150	Locking Arm Assembly
6	110-313	Door Handle
7	70-8092	Alligator Plate
7a	70-8093	Side Frame
8	70-8046	Slide Plate
9	70-301	Cylinder, Double Acting
9a	70-8131	Bolt, Plate Connector
10	70-8133	Bolt Cylinder Mounting
10a	70-8135	Washer
11	70-8051	Caster, Rigid Type
12	ZDCP-2142	Hose Connector
13	RBH14X12	Rubber Hose
14	70-8061	Caster, Swivel Type
15	70-8315	Door Lock, Lower Arm
15a	99-614F	Flat Washer
15b	65-855	Cotter Pin
15c	70-8317	Pin, Connector Rod
16	70-8313	Connecting Rod, Door Lock
17	70-8413	2-Way Control Valve

PORTABLE SYPHON SAND BLASTERS and BLAST CABINETS

SAND BLASTERS - U5040-S, U5041-S, U5042-S

- ECONOMICAL
- PORTABLE
- EASY TO USE
- CYCLO-IMPELLOR ACCELERATION SYSTEM USED IN THE U5041-S and U5042-S MODELS
- NON-ELECTRIC, AIR-OPERATED ONLY

BLAST CABINETS

- HEAVY-DUTY POLYETHYLENE CABINET
- HEAVY-DUTY NEOPRENE GLOVES
- NON-ELECTRIC, AIR-OPERATED FOOT CONTROL

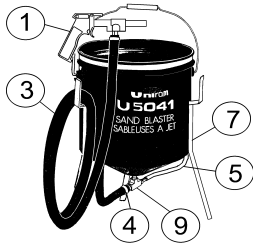
MODEL	U5040-S	U5041-S	U5042-S
DESCRIPTION	PORT-A-BLAST KIT	SYPHON BLASTER	SYPHON BLASTER
CAPACITY (LB)	-	50	95
HOSE LENGTH (FT)	8	8	10
SHIP SIZE (W X D X H")	18X12X2	12X12X16	13X14X33
SHIPPING WEIGHT (LB/KG)	5/11	10/22	18/39.6
CFM @ 100 PSI	12	10	10
NUMBER OF NOZZLES	2 STEEL	2 STEEL	2 STEEL
GUN TYPE	U5035	U5036	U5036

MODEL	UC2400	UC2400E
CABINET SIZE (WXDXH")	22X17.5X13	22X17.5X13
FOOT PEDAL	X	X
SHIP SIZE (W X D X H")	24X21X33	24X21X33
SHIPPING WEIGHT (LB/KG)	82/37.3	55/25
ABRASIVE INCLUDED	12.5 LB	NONE
NUMBER OF NOZZLES	1 CARBIDE	2 STEEL
GUN TYPE	U2437	U2437

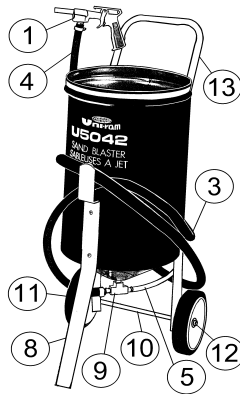
SYPHON BLASTER PART



U5040-S

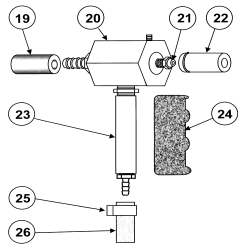


U5041-S

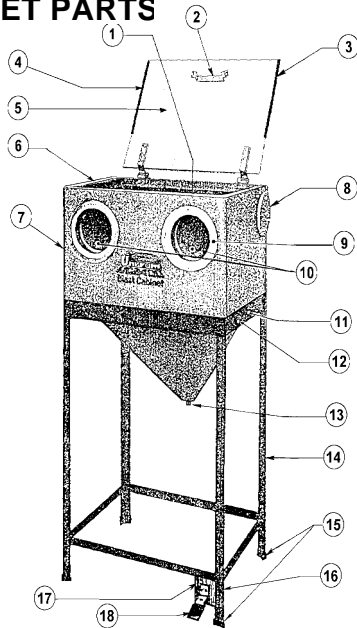


U5042-S

BLAST CABINET PARTS



**U2437
BLAST GUN**



**UC2400(E)
BLAST CABINE**

ITEM PART NO. DESCRIPTION

1A	U5035	Gun Assy, 1/2"OD Nozzle, Threaded
1	U5036	Gun Assy, 1/2"OD Nozzle, Push In
2	27-731	Abrasive Hose (1/2"IDx8'), U5041
3	27-732	Abrasive Hose (1/2"IDx10'), U5042
4	50-261	Hose Clamp
5	50-262	Air Inlet Tube
6	50-246	Abrasive Pick Up Tube
7	50-317	Leg with Hose Attachment, U5041
8	50-319	Front Support Leg, U5042
9	50-250	Abrasive Mixer Assembly
10	50-383	Axle, 1/2"
11	27-384	Wheel Cap, High Impact, 1/2" Axle

ITEM PART NO. DESCRIPTION

1	U2437	Gun Assembly, 5/8" Push In Nozzle
2	110-313	Pull Handle
3	32-323	Clear Plastic Lid
4	32-326	Film Holder
5	32-407	Window Protector Film, 12" x 20' Roll
6	32-417	Plug for Hose Hole
7	32-201-Y	Cabinet
8	32-281	Exhaust Deflector Plate
9	32-411	Glove Hole Flange
10	32-002	Gloves, Left and Right, 18" Arm
10a	32-015	Glove Clamp, 5", Either Hand
11	99-403EH	Hex Head Bolt
12	110-475	Air Inlet Fitting
13	10-173	Drain Plug
14	32-610	Support Frame Assembly
15	32-617	Leg Ferruel
16	113-400	Air Valve Assembly
17	32-710	Pedal Bracket
18	100-750	Pedal Assembly
19	PVH14X38	Air Hose
20	U2437	Gun Assembly, 5/8" Push In Nozzle
21	51-252	Air Jet, 1/8" ID for U5020-30
22	51-055	Steel Nozzle, 5/8"OD, Push In
	51-010	Carbide Nozzle, 5/8" OD
	51-020	Ceramic Nozzle, 5/8" OD
23	51-410	Handle Assembly, U2437
24	40-127	Handle Cover

CONDITIONS OF SALE

GENERAL

1. UNI-RAM RESERVES THE RIGHT TO:
 - MAKE CHANGES IN DESIGN AND/OR CONSTRUCTION WITHOUT OBLIGATION TO INCORPORATE SUCH CHANGES IN PREVIOUSLY SOLD PRODUCTS
 - CHANGE PRICES WITHOUT NOTICE
 - REQUIRE A NUMBERED PURCHASE ORDER SIGNED BY AN AUTHORIZED REPRESENTATIVE
2. THIS CATALOG SUPERCEDES AND INVALIDATES ALL OTHER CATALOGS
3. DISCOUNTS AGREED UPON AT THE TIME OF PURCHASE CANNOT BE CHANGED AFTER THE GOODS ARE RECEIVED

RETURNS

4. ALL SALES ARE FINAL AND NO RETURNS WILL BE ACCEPTED WITHOUT PRIOR AUTHORIZATION FROM AN AUTHORIZED UNI-RAM STAFF MEMBER
5. A RETURNED GOODS AUTHORIZATION (RGA) NUMBER IS REQUIRED
6. UNI-RAM MAY CHARGE A RE-STOCKING FEE
7. ALL FREIGHT CHARGES WILL BE PAID BY THE CUSTOMER
8. OTHER ARRANGEMENTS MUST BE AGREED TO IN WRITING

FREIGHT TERMS

9. ALL ORDERS ARE **EX WORKS** UNLESS OTHERWISE ARRANGED
10. SHIPMENTS ARE SHIPPED FREIGHT COLLECT USING OUR CHOICE OF CARRIER UNLESS OTHERWISE SPECIFIED
11. SMALLER SHIPMENTS MAY BE SENT BY COURIER OR MAIL, PREPAID AND CHARGED
12. UNI-RAM WILL PAY THE FREIGHT ON ORDERS OF \$3500.00 NET OR MORE – **EXCLUDING** THE FOLLOWING PRODUCTS: **UTC900R, UFC500R and ABRASIVE MEDIA** THESE ITEMS **DO NOT COUNT** TOWARD THE \$3500.00 TOTAL FOR NO-CHARGE FREIGHT
13. THE FREIGHT PREPAYMENT TERMS DO NOT APPLY TO ALASKA, HAWAII OR OTHER OFF-CONTINENT LOCATIONS

PAYMENT TERMS and BILLING POLICY

14. PAYMENT TERMS ARE NET 30 DAYS FROM DATE OF SHIPMENT. IF PAYMENT IS NOT RECEIVED WITHIN 45 DAYS, PAYMENT TERMS MAY BE CHANGED TO COD.
15. A 2% DISCOUNT IS ALLOWED ON PAYMENTS MADE WITHIN 10 DAYS OF THE SHIP DATE
16. BILLING IS BY INVOICE ONLY. NO STATEMENTS WILL BE SENT.

MINIMUM ORDER

17. ORDERS BELOW \$50.00 NET PER SHIPPING POINT WILL BE CHARGED AT TRADE PRICES.

DAMAGE CLAIMS

18. CLAIMS FOR LOSS OR DAMAGE DURING TRANSPORT MUST BE MADE DIRECTLY TO THE CARRIER BY THE CONSIGNEE

BACKORDERS

19. UNSHIPED ITEMS ARE BACKORDERED AND FREIGHT IS CHARGED ON BACKORDERS UNLESS OTHER ARRANGEMENTS ARE REQUESTED BY THE CUSTOMER AND AGREED TO BY UNI-RAM.