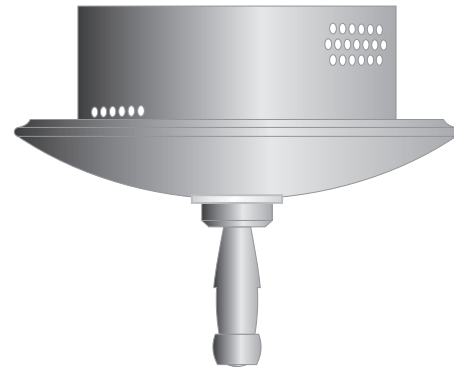


12 Volt 150 & 300 Watt Single Direct Power Feed Electronic Surface Mount Transformers

TRANSDIR-SFE_
1.2


CAUTION - RISK OF FIRE

This product requires installation by a qualified electrician. Before installing be sure to read all instructions and **DISCONNECT POWER TO THE ELECTRICAL BOX.**

GENERAL PRODUCT INFORMATION:



This instruction is for the following models:

- 150 Watt Single Direct Power Feed Electronic Surface Mount Transformer (**TRANSDIR-SFE150-**)
- 300 Watt Single Direct Power Feed Electronic Surface Mount Transformer (**TRANSDIR-SFE300-**)

This product is ETL listed only when all the products used are supplied by LBL Lighting, is suitable only for indoor dry locations and approved for use at any height above the finished floor.

A typical installation is shown. Specific installation must be in accordance with local electrical codes.

This product may be dimmed only with a low voltage electronic dimmer. Using a dimmer not designed for low voltage electronic applications may cause undesirable noise and potentially shorten the life of the transformer.

This product is intended for use with LBL Lighting low voltage lighting systems only.

Read all instructions thoroughly. Read "Important Safety Information" on next column before proceeding with the installation.

Important Safety Information

Do not conceal or extend bus bar conductors through a building wall.

Do not install this lighting system in a damp or wet location.

To reduce the risk of fire and burns, do not install this lighting system where the uninsulated open bus bar conductors can be shorted or contact any conductive materials.

To reduce the risk of the system overheating and possibly causing a fire, make sure all the connections are tight.

Do not install fixture assemblies closer than six inches to curtains or similarly combustible materials.

Turn the electrical power off before modifying the lighting system in any way.

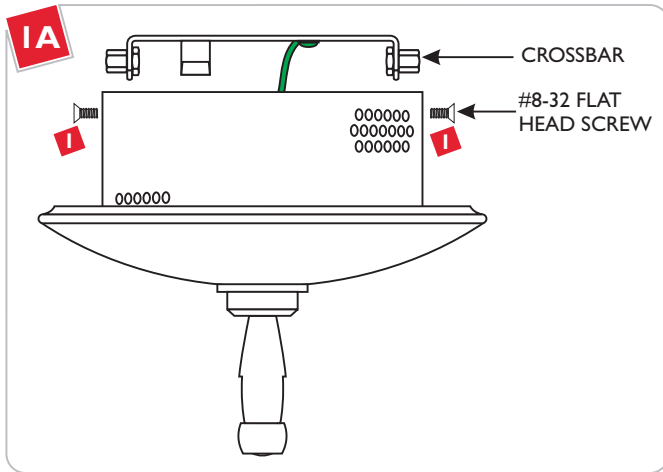
The fixtures used with the system must be identified to be used with the corresponding system.

Minimum volume of the electrical box must be 6 cubic inches (98 cubic centimeters).

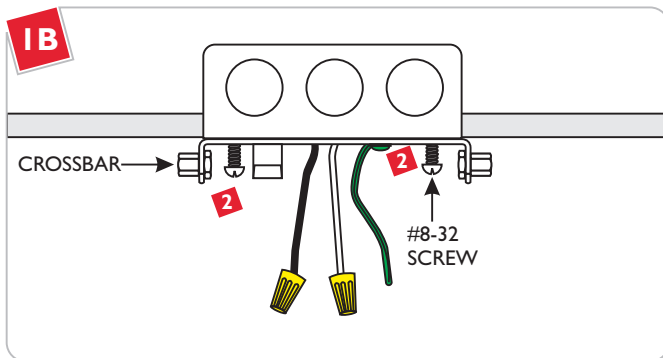
Load the circuit of the surface mount transformer to no more than the maximum rated capacity as specified.

To reset the electronic surface mount transformer, turn the power off then on (main power, breaker panel, or wall switch).

Install the Transformer

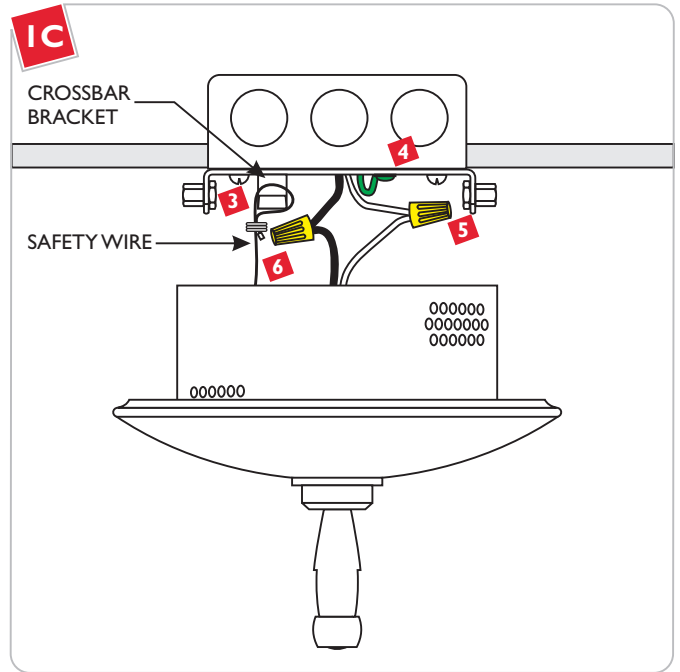


- 1 Remove the two #8-32 flat head screws to remove the crossbar.

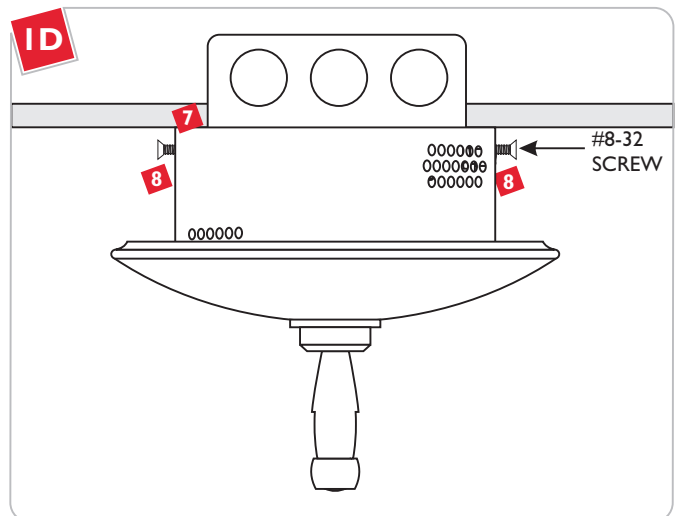


CAUTION: Turn the power to electrical box off!

- 2 Mount the crossbar to the electrical box with the provided two #8-32 screws.

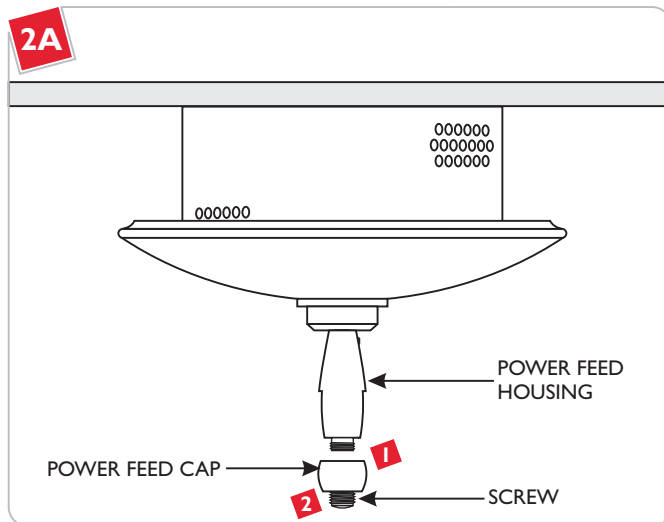


- 3 Hook the transformer safety wire onto the crossbar bracket.
- 4 Connect the crossbar green wire to the ground in accordance with local electrical codes.
- 5 Connect the transformer white wire to the neutral power line wire with a wire nut.
- 6 Connect the transformer black wire to the hot power line wire with a wire nut.



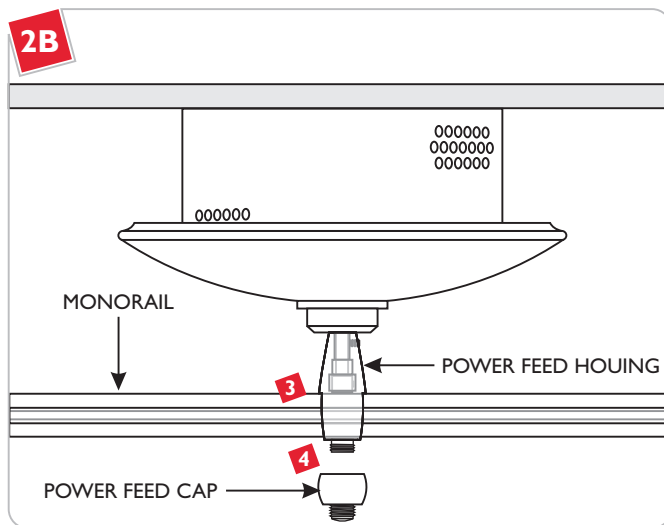
- 7 Slide the transformer onto the crossbar.
- 8 Align the transformer holes with the crossbar holes; replace and tighten the two #8-32 flat head screws.

Connect the Monorail to Transformer

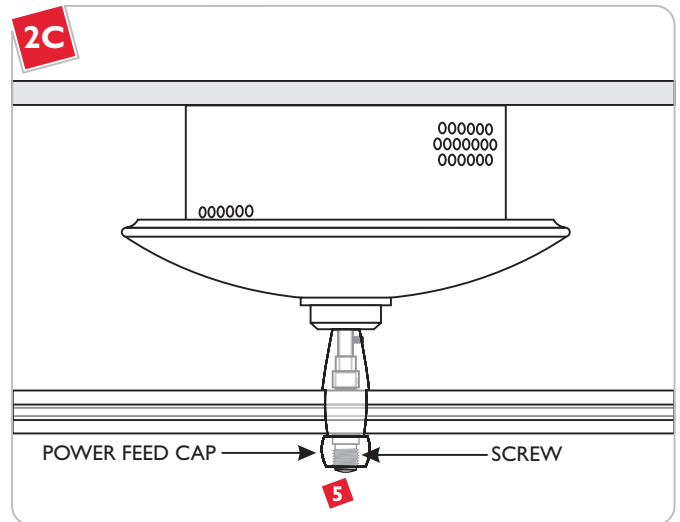


NOTE: The standoffs should be installed to support the Monorail while connecting Monorail to the surface mount transformer. Refer to the instruction provided with the standoffs.

- 1 Remove the power feed cap from the power feed housing.
- 2 Completely back out the screw on the power feed cap.



- 3 Place a Monorail section into the standoffs and power feed housings.
- 4 Screw the power feed cap completely to the power feed housing. **Make sure that the power feed cap is not cross threaded.**



- 5 Tighten the screw on the power feed cap for proper power connection.

SAVE THESE INSTRUCTIONS!



LBL Lighting

7400 Linder Ave, Skokie, IL 60077

800.323.3226 - 847.626.6300

www.lblighting.com

© 2008 LBL Lighting. All rights reserved. The "LBL Lighting" graphic is a registered trademark of LBL Lighting. LBL Lighting reserves the right to change specifications for product improvements without notification.

A Generation Brands Company