

Superdelta Oval

170_, 171_ 1.0



GENERAL PRODUCT INFORMATION:

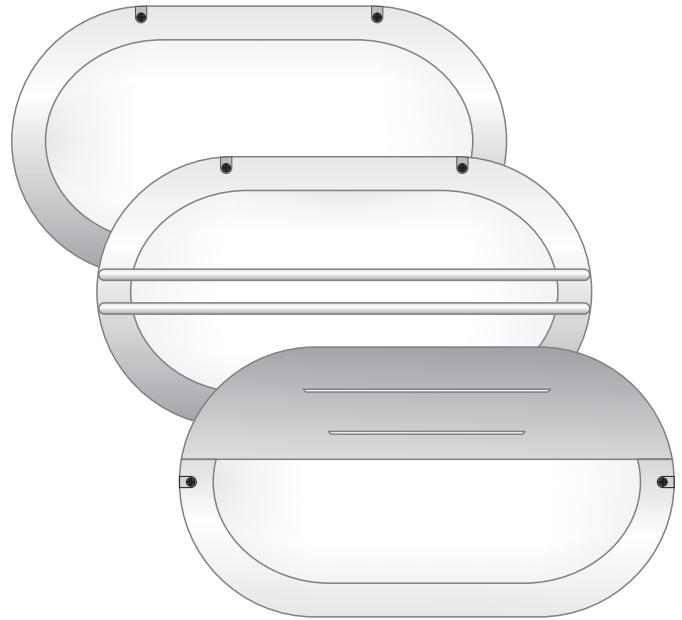
This product is suitable for wet locations.



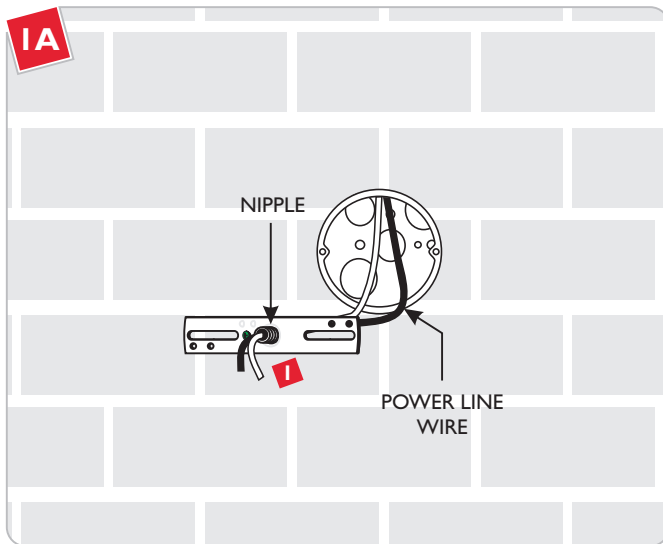
This product can be dimmed with a standard incandescent dimmer.

This instruction shows a typical installation.

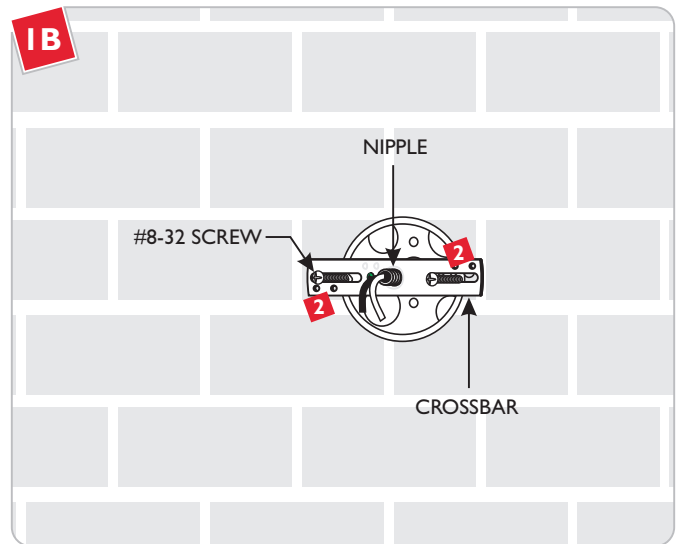
CAUTION - RISK OF FIRE
This product requires installation by a qualified electrician. Before installing be sure to read all instructions and **DISCONNECT POWER TO THE ELECTRICAL BOX.**



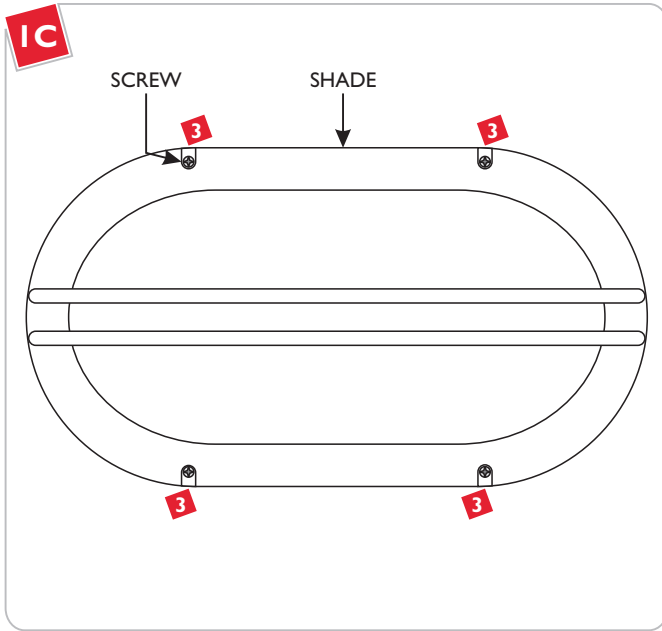
Install the Fixture



1 Feed the power line wires through the crossbar nipple.

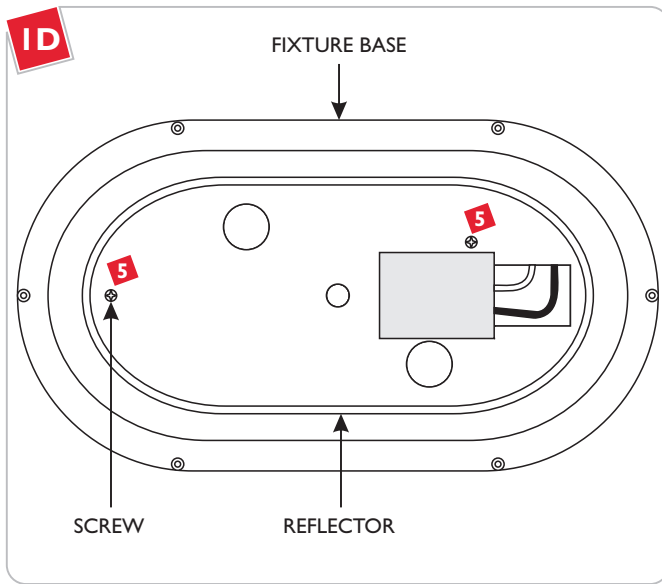


2 Attach the crossbar to the electrical box using two #8-32 screws provided.



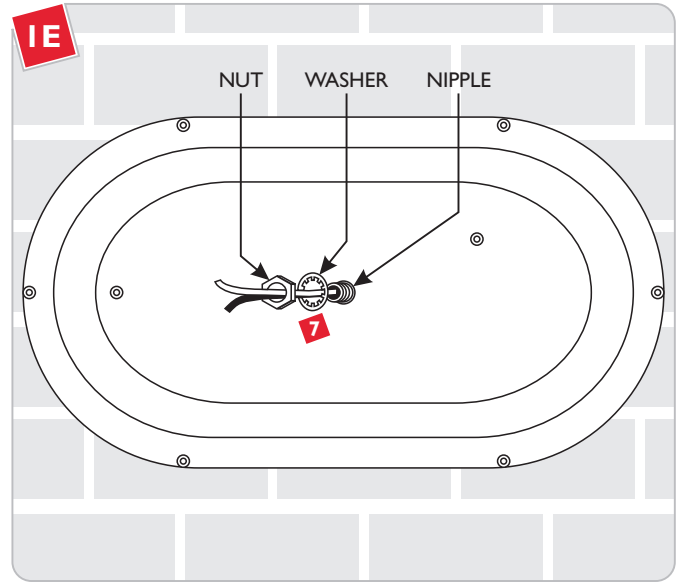
3 Remove all the screws from the front of the fixture.

4 Lift the shade off of the fixture.

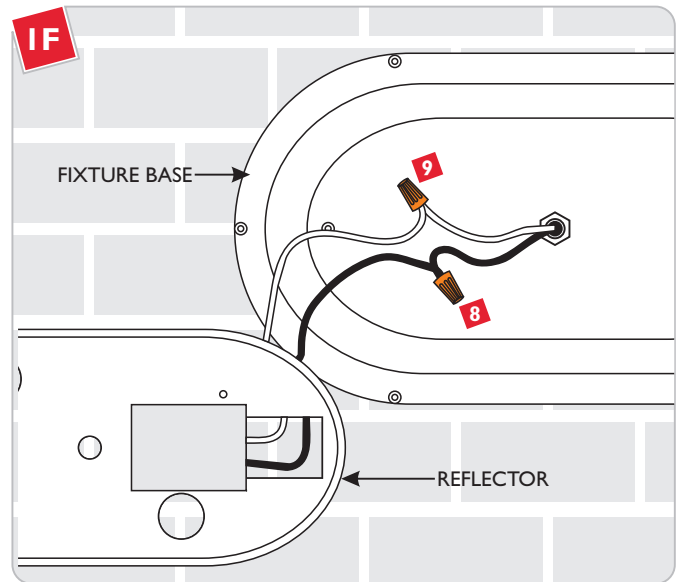


5 Remove the two screws on the reflector.

6 Lift the reflector out of the fixture base.



7 Make sure the fixture is level, and secure the fixture to the nipple with a lock washer and nut.



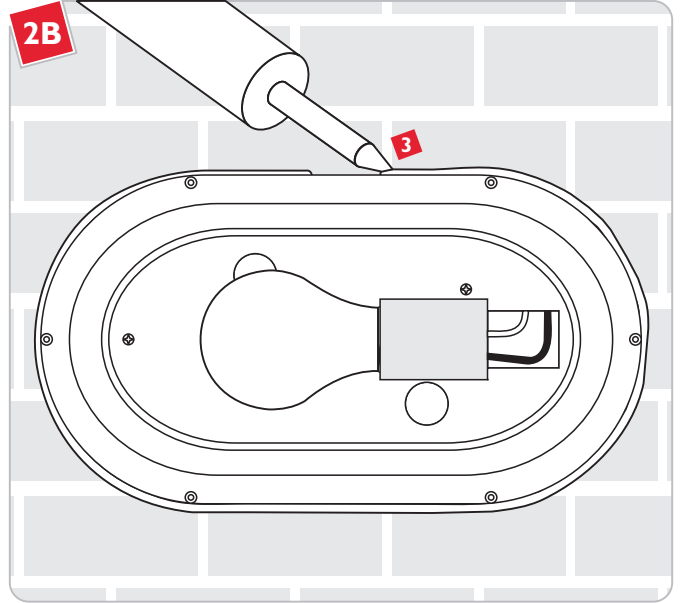
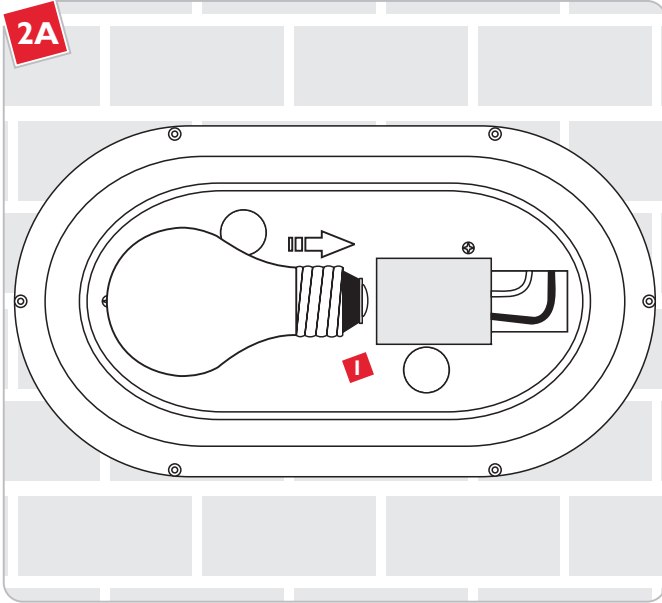
8 Connect the hot power line wire to the black fixture wire with a wire nut.

9 Connect the neutral power line wire to the white fixture wire with a wire nut.

10 Connect the fixture to a suitable ground according to local electrical codes.

11 Reattach the reflector to the fixture base.

Install the Lamp and Shade



CAUTION: To reduce the risk of a burn or electric shock during relamping, disconnect the power to the fixture.

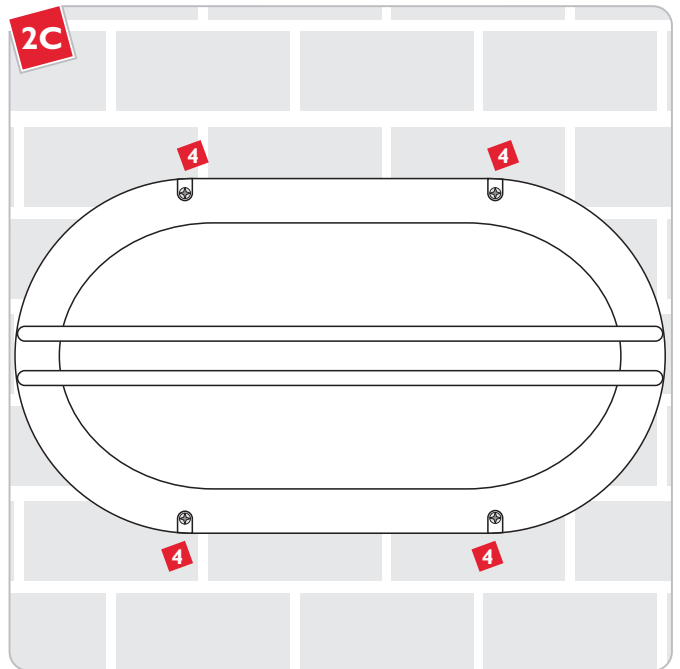
For Oval and Oval/G fixtures, use **MAX 60 Watt** Type A19 Medium Base Lamp.

For Oval Visa fixtures, use **MAX 40 Watt** type A19 Medium Base Lamp.



- 1** Screw the lamp completely into the socket.
- 2** Before continuing, turn on power to the fixture to verify all connections are good.

- 3** If installing in a wet location, caulk around the base with waterproof construction sealant.



- 4** Replace the shade and reattach the screws to secure the shade to the fixture.

SAVE THESE INSTRUCTIONS!



7400 Linder Ave, Skokie, IL 60077

800.323.3226 - 847.626.6300

www.lblighting.com

© 2008 LBL Lighting. All rights reserved. The "LBL Lighting" graphic is a registered trademark of LBL Lighting. LBL Lighting reserves the right to change specifications for product improvements without notification.

A Generation Brands Company