

LBL Lighting

Wall Sconces

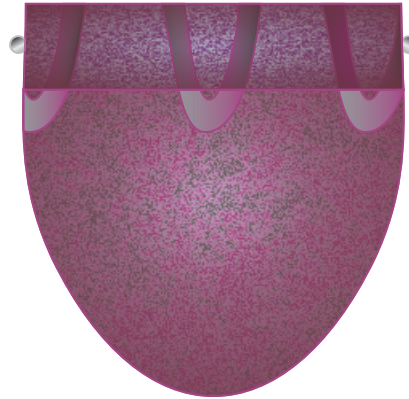
GENERAL PRODUCT INFORMATION:



This product can mount to either a 4" square electrical box with round plaster ring or an octagon electrical box.

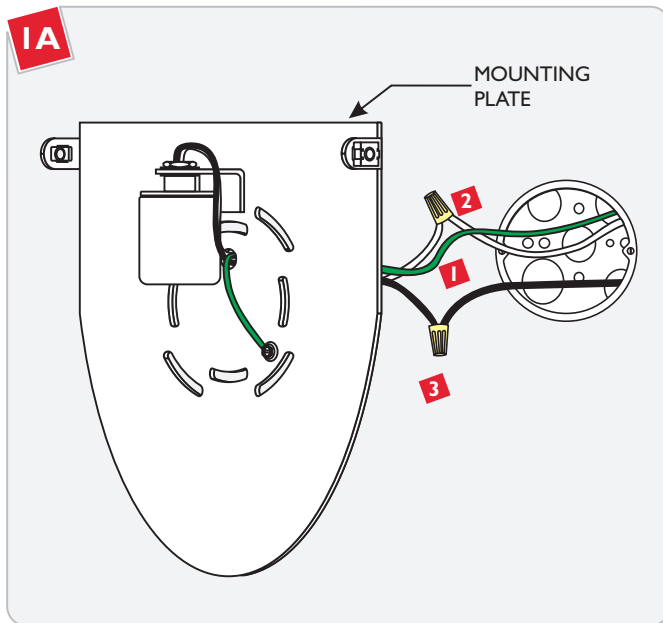
This product is suitable for damp locations.

This product can be dimmed with a standard incandescent dimmer.

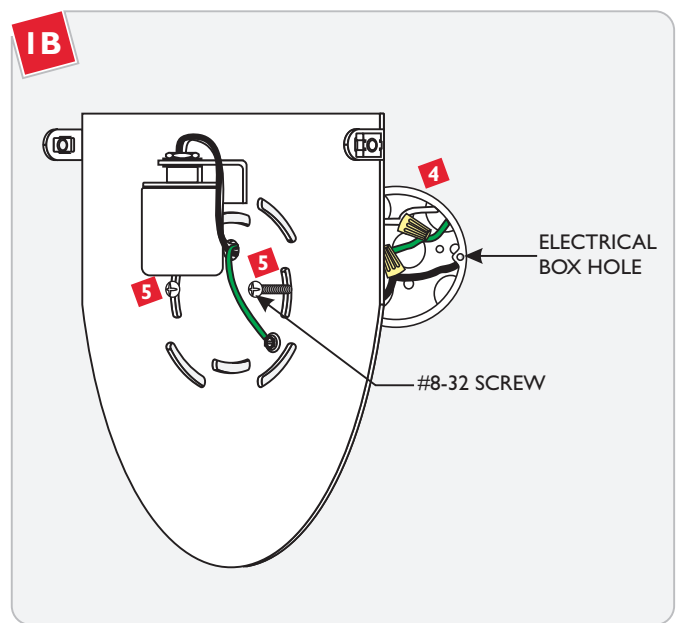


CAUTION - RISK OF FIRE
 This product requires installation by a qualified electrician. Before installing be sure to read all instructions and **TURN THE POWER TO THE ELECTRICAL BOX OFF.**

Install the Fixture

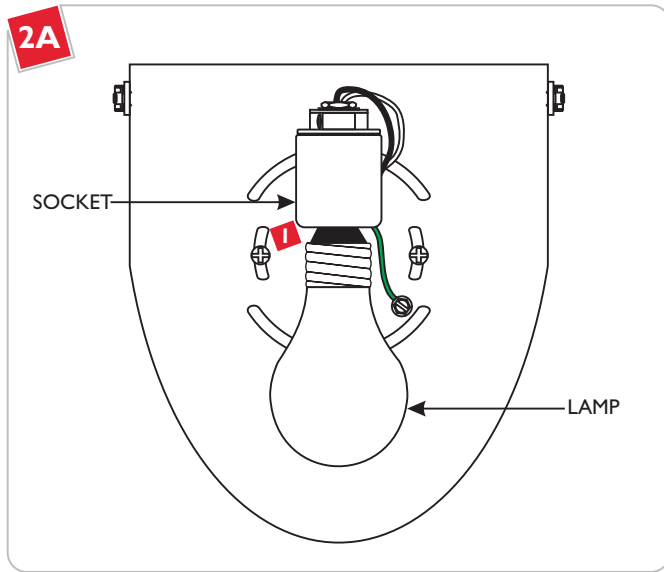


- 1** In accordance with local electrical codes, make sure that the mounting plate is grounded.
- 2** Connect the fixture white wire to the neutral power line wire with a wire nut.
- 3** Connect the fixture black wire to the hot power line wire with a wire nut.



- 4** Place all wires and wire nut connections properly inside the electrical box.
- 5** Align the mounting plate holes with electrical box holes and tighten with two #8-32 screws to secure the fixture in place.

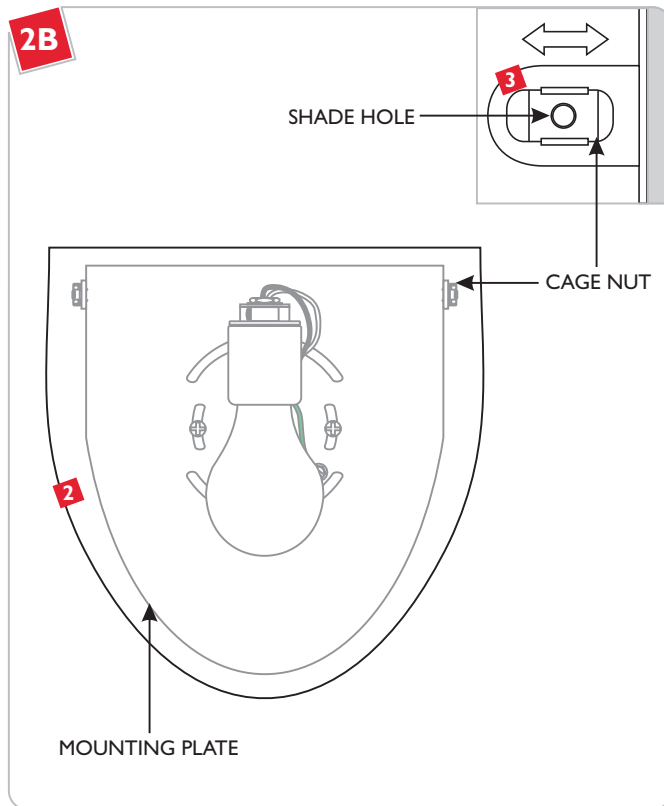
Install the Lamp & Shade



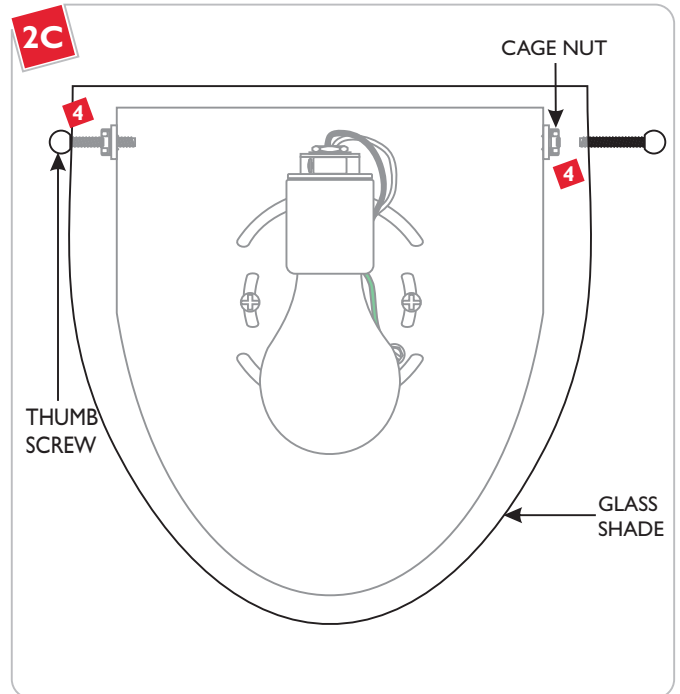
Use **MAX 120 Volt, 100 Watt** Type A19 Medium Base Lamp.



- 1 Screw the lamp into the socket.



- 2 Place the glass shade over the mounting plate against the wall.
- 3 Slide the cage nuts to align them with the holes in the shade.



- 4 Tighten the thumb screws through the glass shade holes into the cage nut holes.

NOTE: Do not over tighten the thumb screws which may cause the glass shade to break.

SAVE THESE INSTRUCTIONS!

 **LBL Lighting**

7400 Linder Ave, Skokie, IL 60077

800.323.3226 - 847.626.6300

www.lblighting.com

© 2008 LBL Lighting. All rights reserved. The "LBL Lighting" graphic is a registered trademark of LBL Lighting. LBL Lighting reserves the right to change specifications for product improvements without notification.

A Generation Brands Company