



Wall Sconces

GENERAL PRODUCT INFORMATION:



This product can mount to either a 4" square electrical box with round plaster ring or an octagon electrical box.

This product is suitable for damp locations.

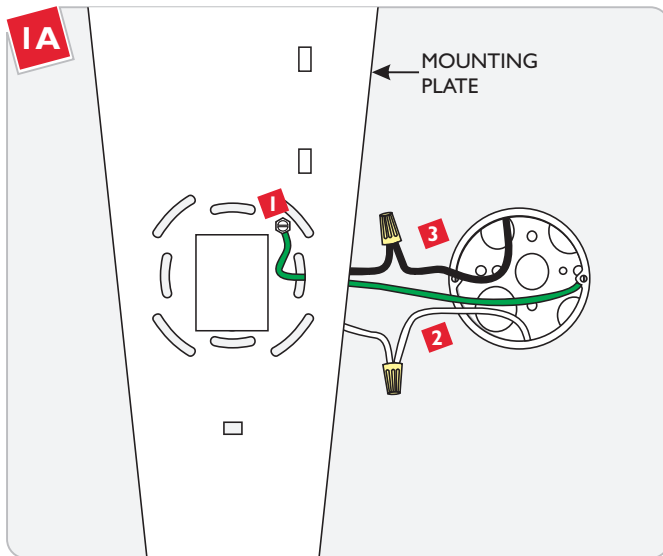
This product can be dimmed with a standard incandescent dimmer.

CAUTION - RISK OF FIRE

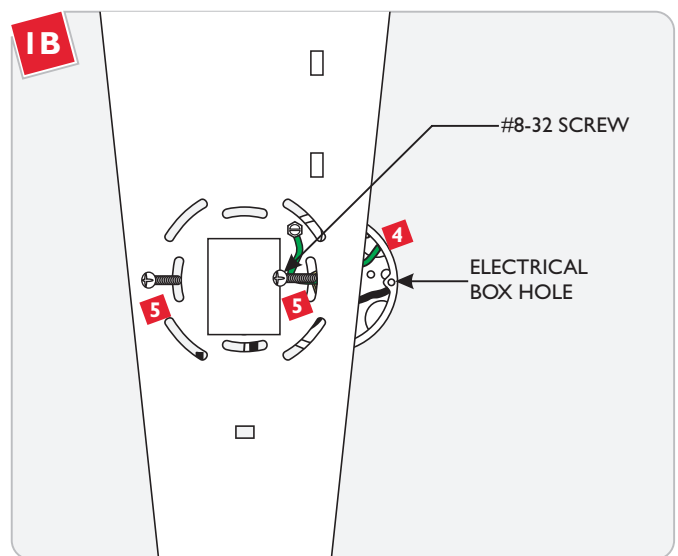
This product requires installation by a qualified electrician. Before installing be sure to read all instructions and **TURN THE POWER TO THE ELECTRICAL BOX OFF.**



Install the Fixture

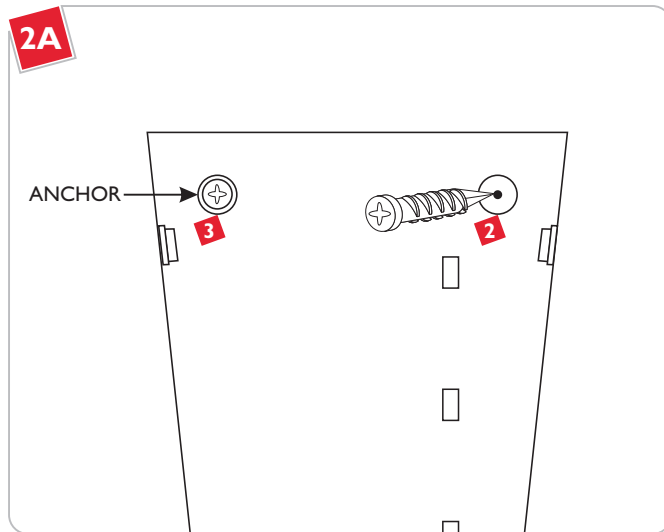


- 1** Connect the braided copper wire to a suitable ground in accordance with local electrical codes.
- 2** Connect the fixture white wire to the neutral power line wire with a wire nut.
- 3** Connect the fixture black wire to the hot power line wire with a wire nut.

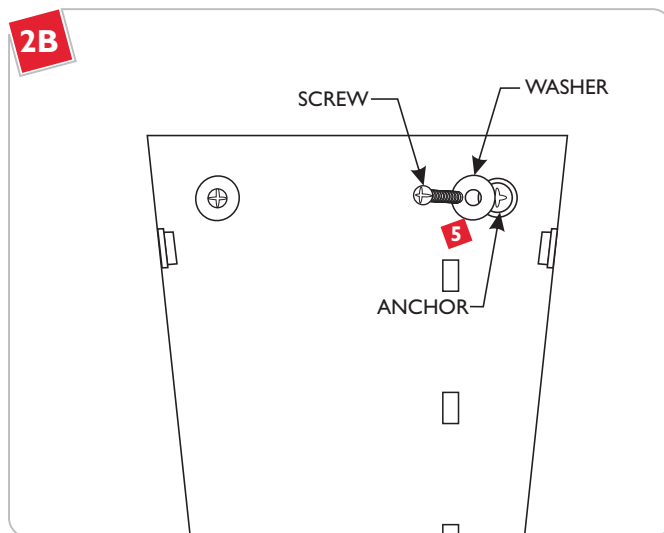


- 4** Place all wires and wire nut connections properly inside the electrical box.
- 5** Align the mounting plate holes with electrical box holes and tighten with two #8-32 screws to secure the fixture in place.

Anchor the Fixture

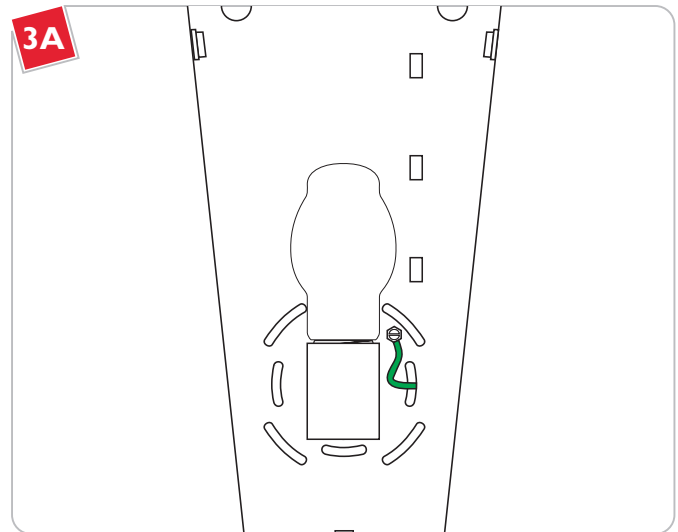


- 1 Verify that the fixture is level before continuing.
- 2 Line up an anchor tip with the center a mounting plate hole, and push the anchor into the wall up to the threads.
- 3 Screw the anchors in the rest of the way with a Phillips-head screwdriver.
- 4 Repeat steps 2-3 for all 3 anchors.



- 5 Slide a #8 screw through a washer and screw it into an anchor. Repeat for all 3 anchors to secure the fixture base to the wall.

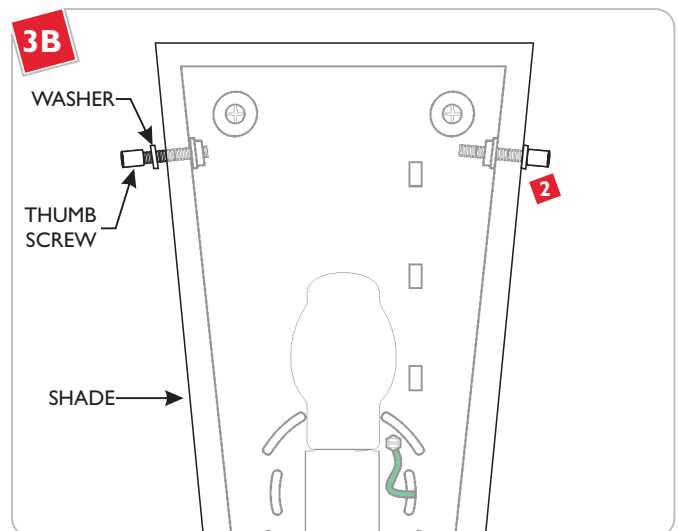
Install the Lamp and Shade



Use **MAX** 120 Volt, **60 Watt** Type BT15 Medium Base Lamp.



- 1 Screw the lamp into the socket.



NOTE: Do not over tighten the thumb screws. Overtightening may break the glass and result in injury.

- 2 Slide the thumb screws into the nylon washers and through the holes in the shade, and screw them into the nuts on the mounting plate.

SAVE THESE INSTRUCTIONS!

 **LBL Lighting**

7400 Linder Ave, Skokie, IL 60077

800.323.3226 - 847.626.6300

www.lblighting.com

© 2008 LBL Lighting. All rights reserved. The "LBL Lighting" graphic is a registered trademark of LBL Lighting. LBL Lighting reserves the right to change specifications for product improvements without notification.

A Generation Brands Company