

CATALOG NUMBER	TYPE
PROJECT	

SINGLE CIRCUIT

"H" TRACK ACCESSORIES

3 Wire Live End Connector Model HLE

Description: Supplies power through the end of a track. Accepts wires from above the ceiling, with knock out for trade size connector.

Finish: Available in White or Black.

Listing: UL & CUL Listed, New York City Approved.

Dimensions: 4 1/4"L



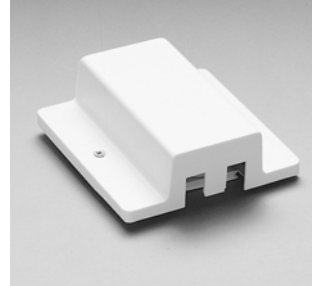
3 Wire Floating Canopy Connector Model HFC

Description: Connects to a junction box, allows track to be powered anywhere along the length of track.

Finish: Available in White or Black.

Listing: UL & CUL Listed, New York City Approved.

Dimensions: 4 1/4" x 4 1/4"



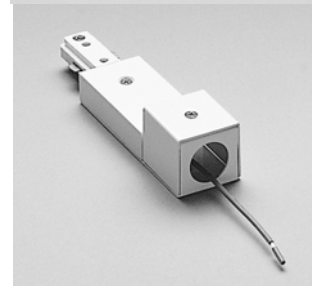
3 Wire BX Connector Model HBXLE

Description: Live end connector with knockouts above and on the side. To accept trade size BX or non-metallic sheathed cable connectors.

Finish: Available in White or Black.

Listing: UL & CUL Listed, New York City Approved.

Dimensions: 5 3/4"L



2 Wire 15' Cord , Male Plug Model HCORD

Description: Used with a live end connector to wire a section of track as a portable unit. Maximum Capacity 7 amp – 800 watts, 120volt.

Finish: Available in White or Black.

Listing: New York City Approved.

Dimensions: 15'L



W.A.C. reserves the right to change details that do not affect overall function and performance.

CATALOG NUMBER	TYPE
PROJECT	

SINGLE CIRCUIT

"L" TRACK ACCESSORIES

2 Wire Live End Connector Model LLE

Description: Supplies power through the end of a track. Accepts wires from above the ceiling, with knock out for trade size connector.

Finish: Available in White or Black.

Listing: UL & CUL Listed, New York City Approved.

Dimensions: 4 1/4"L

2 Wire Floating Canopy Model LFC

Description: Connects to a junction box, allows track to be powered anywhere along the length of track.

Finish: Available in White or Black.

Listing: UL & CUL Listed, New York City Approved.

Dimensions: 4 1/2" x 4 1/2"

2 Wire BX Connector Model LBXLE

Description: Live end connector with knockouts above and on the side. To accept trade size BX or non-metallic sheathed cable connectors.

Finish: Available in White or Black.

Listing: UL & CUL Listed, New York City Approved.

Dimensions: 6"L

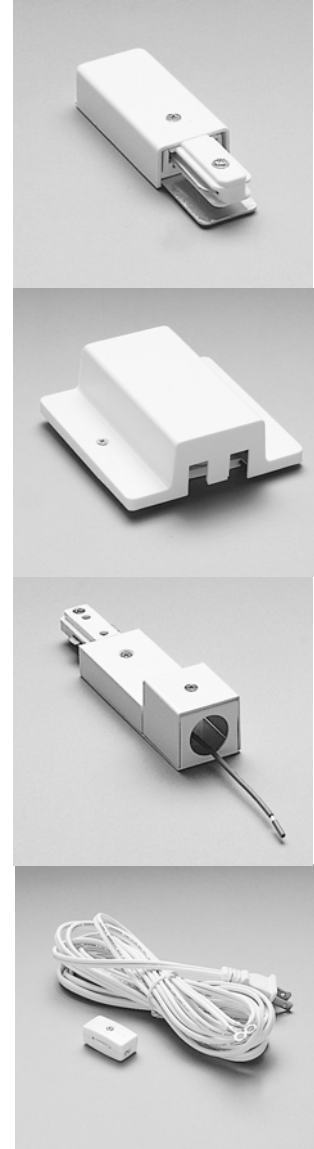
2 Wire 15' Cord, Male Plug & Switch Model LCORDSET

Description: Used with a live end connector to wire a section of track as a portable unit. Maximum Capacity 7 amp – 800 watts, 120volt.

Finish: Available in White or Black.

Listing: New York City Approved.

Dimensions: 15'L



W.A.C. reserves the right to change details that do not affect overall function and performance.

CATALOG NUMBER	TYPE
PROJECT	

SINGLE CIRCUIT

"J" TRACK ACCESSORIES

Wide 2-Wire Live End Connector Model JLE

Description: Supplies power through the end of a track. Accepts wires from above the ceiling, with knock out for trade size connector.

Finish: Available in White or Black.

Listing: UL & CUL Listed, New York City Approved.

Dimensions: 4 3/4"L

Wide 2-Wire Floating Model JFC

Description: Connects to a junction box, allows track to be powered anywhere along the track.

Finish: Available in White or Black.

Listing: UL & CUL Listed, New York City Approved.

Dimensions: 4 5/8" x 4 5/8"

Wide 2-Wire BX Connector Model JBXLE

Description: Live end connector with knockouts above and on the side. To accept trade size BX or non-metallic sheathed cable connectors.

Finish: Available in White or Black.

Listing: UL & CUL Listed, New York City Approved.

Dimensions: 6 1/4"L

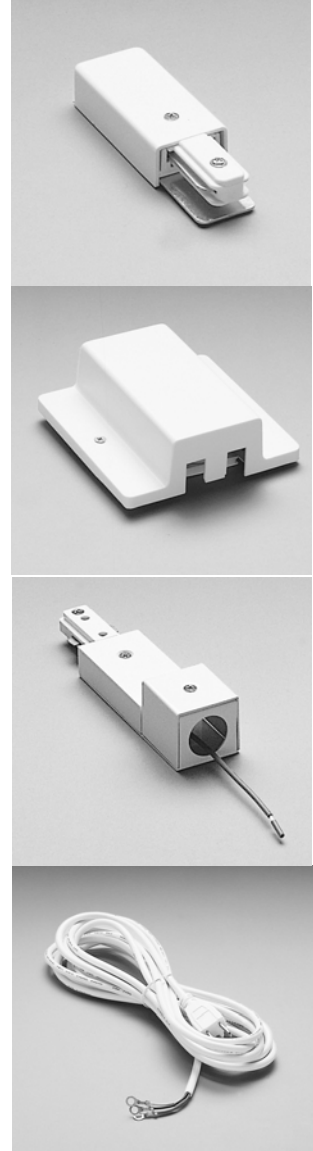
Wide 2-Wire 15' Cord, Male Plug Model HCORD

Description: Used with a live end connector to wire a section of track as a portable unit. Maximum Capacity 7amp – 800 watts, 120volt.

Finish: Available in White or Black.

Listing: New York City Approved.

Dimensions: 15'L



W.A.C. reserves the right to change details that do not affect overall function and performance.