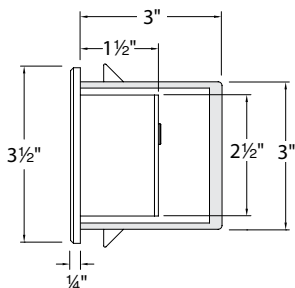
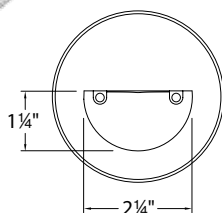


# Model: WL-LED300-C

## LEDme® Step Light

# WAC LIGHTING

Responsible Lighting®



Fixture Type:

Catalog Number:

Project: \_\_\_\_\_

Location: \_\_\_\_\_

### PRODUCT DESCRIPTION

Circular scoop LEDme® Step Light. Designed for safety and style on stairways, patios, decks, balcony areas, walkways and building perimeters. Features an architectural design. Energy efficient for long-lasting indoor and outdoor lighting solutions. Creates an attractive, romantic impression at night.

### FEATURES

- Direct wiring, no driver needed
- Low profile, flush to wall aesthetics with no visible hardware
- 40,000 hour rated life
- Balanced lighting, free of shadows with minimum glare
- Up to 200 fixtures can be connected in parallel
- Replaceable LED module
- High Color Rendering Index (CRI) for true color
- 5 year WAC Lighting product warranty

### SPECIFICATIONS

**Construction:** Die-cast aluminum.

**Power:** Direct wiring, no remote driver needed.  
Input voltage: 120VAC 50/60Hz.

**Light Source:** 3000K Samsung HV-AC High Power LED, CRI: 83.  
Total power consumption of 3.9W.

**Mounting:** Supplied with junction box for recessed installation. Suitable for new construction or retrofit installations. See next page for spacing recommendations.

**Dimming:** Dim to 10% with electronic low voltage (ELV) dimmer. Approved dimmers: Lutron Skylark SELV-300P-WH and Leviton Vizia VPE04.

**Finish:** Brushed Nickel (BN), Bronze (BZ) and White (WT) powder coat paint.

**Standards:** UL Listed, meets IP66 standards for wet locations.

### FIXTURE PERFORMANCE

Model #	Lumens	Efficacy
<b>WL-LED300-C-BZ</b>	30	7.7 Lm/W
<b>WL-LED300-C-BN</b>	33	8.5 Lm/W
<b>WL-LED300-C-WT</b>	74	19.0 Lm/W

### ORDER NUMBER

Model #	Finish
<b>WL-LED300-C</b>	<b>BN</b> <i>Brushed Nickel</i>
	<b>BZ</b> <i>Bronze</i>
	<b>WT</b> <i>White</i>

### FINISHES

**BN**



**BZ**



**WT**



**WL-LED300-C** -

Example: **WL-LED300-C-WT**

WAC Lighting  
www.waclighting.com  
Phone (800) 526.2588 • Fax (800) 526.2585

Headquarters/Eastern Distribution Center  
44 Harbor Park Drive • Port Washington, NY 11050  
Phone (516) 515.5000 • Fax (516) 515.5050

Western Distribution Center  
1750 Archibald Avenue • Ontario, CA 91760  
Phone (800) 526.2588 • Fax (800) 526.2585

# Model: WL-LED300-C

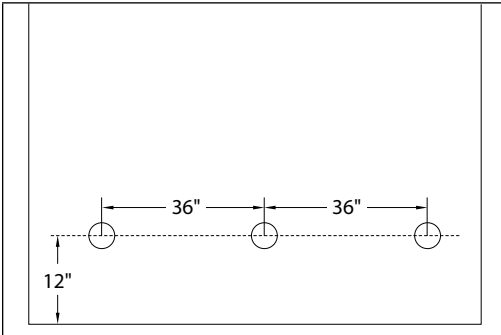
## LEDme® Step Light

# WAC LIGHTING

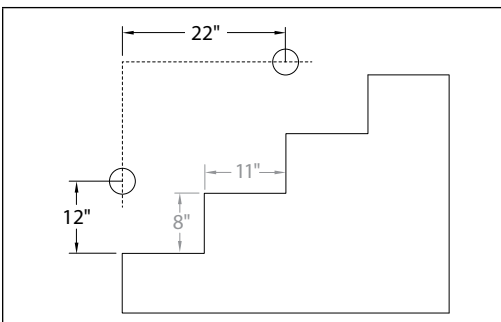
Responsible Lighting®

### SPACING RECOMMENDATIONS FOR OPTIMAL LIGHT DISTRIBUTION

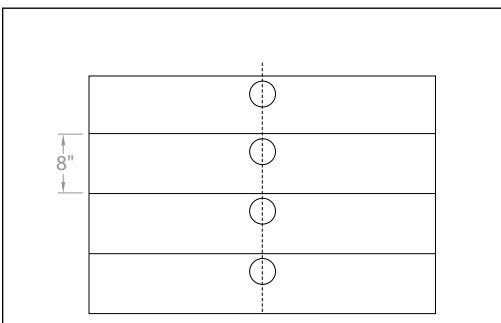
#### Corridors/Hallways etc.



#### Stairs – Wall Mount (side view)



#### Stairs – Step Mount (front view)



Mount in center of stair as close to the next tread as possible.  
For best results use one light for every step.

**WAC Lighting**  
www.waclighting.com  
Phone (800) 526.2588 • Fax (800) 526.2585

**Headquarters/Eastern Distribution Center**  
44 Harbor Park Drive • Port Washington, NY 11050  
Phone (516) 515.5000 • Fax (516) 515.5050

**Western Distribution Center**  
1750 Archibald Avenue • Ontario, CA 91760  
Phone (800) 526.2588 • Fax (800) 526.2585