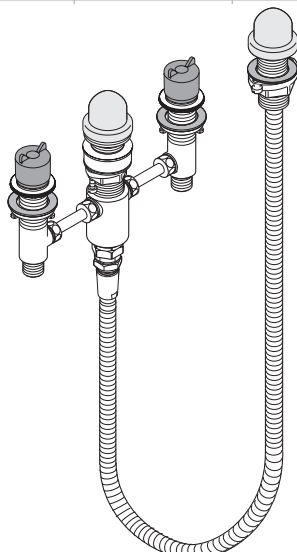


Installation Instructions / Warranty

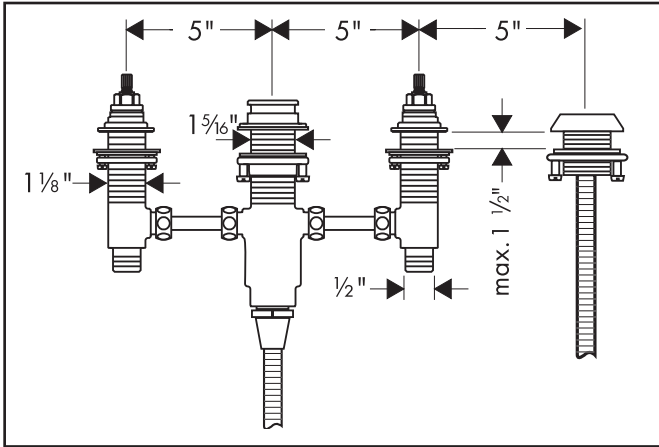


Interaktiv
06646000

hansgrohe

4-Hole Roman Tub Rough

06646000



Recommended operating pressure	45 - 80 psi
Recommended hot water temperature	120° - 140° F*
Flow rate - valves	approx. 6 gpm each
Hole sizes	
Valves	1 1/4"
Spout	1 3/8"
Spout Adapter Pin	3/16"
Handshower holder	1 1/2"
Maximum mounting surface thickness	1 1/2"
Protection against back siphonage provided by check valve included with the trim kit	

*Please know and follow all applicable local plumbing codes when setting the temperature on the water heater. In Massachusetts, the water heater may be set no higher than 112°F.

Installation Considerations

Hansgrohe recommends installation by a licensed professional plumber. Installation must be completed with a Hansgrohe Interaktiv or Retroaktiv 4-hole roman tub trim kit.

Requires 1/2" supply lines (not included).

Thoroughly flush the hot and cold supplies before installation of this valve.

To insure proper fit of the trim, the mounting surface must be complete before installation of this rough.

The included connecting tubes are type "K" copper tubing. If a non-standard installation is desired, the plumber may provide his own copper tubing.

Installation

Install the connecting tubes to the valves and spout tee with the enclosed 3/8" compression fittings.

The hot valve is marked with a red dot.

Remove the plaster shields, escutcheon adapters and stop rings from the valves; the plaster shield, spout adapter and sealing ring from the spout tee. Unless the mounting surface is unusually thin, remove the white plastic spacer from the spout tee as well.

Insert the valves and spout tee through the corresponding holes in the mounting surface. The hot valve should be on the left, the cold on the right.

From above, slide the stop rings onto the valves. Thread on the escutcheon adapters until they are stopped by the stop rings. Rest the unit on the countertop.

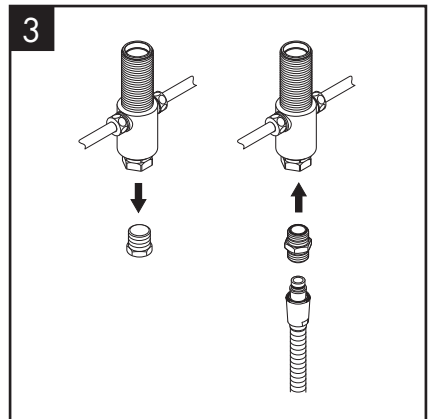
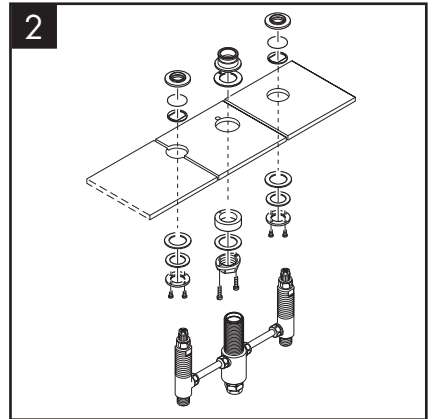
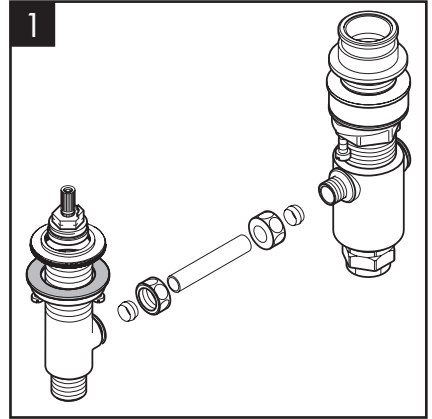
From above, slide the sealing ring onto the spout tee. Thread on the spout adapter. Rest on the countertop, with the pin on the spout adapter inserted in the corresponding hole on the countertop.

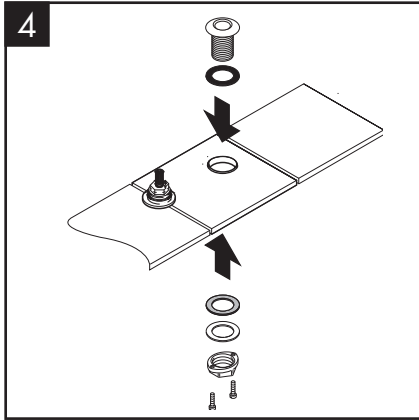
Tighten the retaining nuts and tensioning screws.

Remove the plug from the bottom of the spout tee.

Screw the adapter to the spout tee.

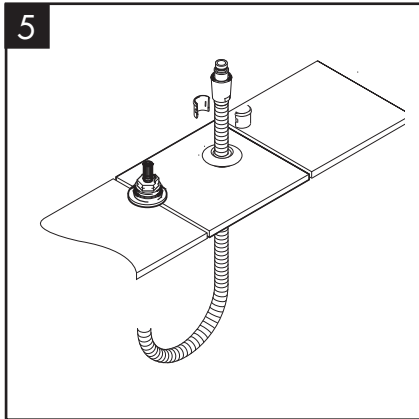
Screw one end of the handshower hose to the adapter.





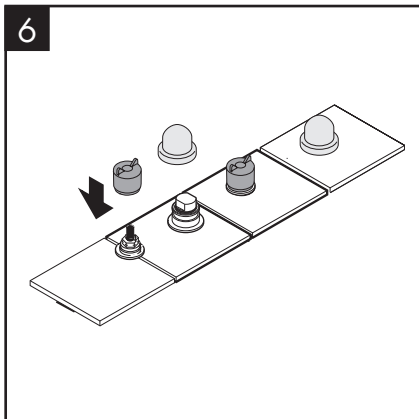
Sit the handshower holder and sealing ring in the hole on the deck.

Install the friction washer, metal washer and mounting nut. Tighten the tensioning screws.



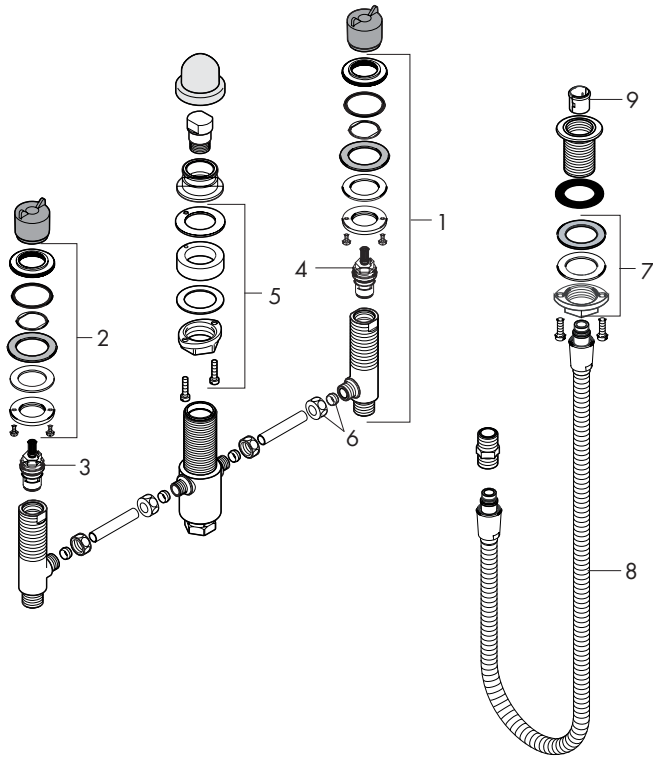
Push the hose up through the handshower holder.

Snap the two halves of the hose feeder around the hose.



If the trim is not to be installed immediately, replace the plaster shields.

Replacement Parts



1	deck valve set	88503000
2	valve mount kit	88511000
3	hot cartridge	94009000
4	cold cartridge	94008000
5	spout tee mounting kit	88540000
6	3/8" compression fitting	88513000
7	handshower holder mounting kit	13961000
8	handshower hose	97161000
9	insert for handshower holder	96942000

Cleaning Recommendation for Hansgrohe Products

Modern faucetry and shower products utilize a combination of materials to comply with the needs of the market with regard to design and functionality.

To avoid damage, it is necessary to use some caution when cleaning. Damage caused by improper treatment is not covered under the Hansgrohe warranty.

Cleaning Materials for Faucets and Showers

- To remove lime scale, use only products made specifically for that purpose. Always follow the manufacturer's instructions when using.
- Do not use cleaners that contain hydrochloric, formic, acetic, or phosphoric acids, as these will cause considerable damage to finishes and to plastic components.
- Never mix cleaning materials.
- Never use cleaners containing abrasives. Do not use abrasive cleaning cloths, pads, or sponges.

Cleaning Procedures

- Clean your faucets and shower products as and when required. Regular cleaning will prevent scale buildup and water spotting.
- Follow the label instructions. Do not allow any cleaner to remain on the product for longer than necessary.
- When using spray cleaners, spray first onto a sponge or cloth – do not spray directly onto the product.
- After cleaning, rinse thoroughly with clear water to remove any cleaner residue.

Important

- Soap and shampoo residue can also cause damage to the product. Rinse well with clean water after use.
- If the surface is already damaged, harsh cleaning materials will cause further damage.

Limited Lifetime Consumer Warranty

This product has been manufactured and tested to the highest quality standards by Hansgrohe, Inc. ("Hansgrohe"). This warranty is limited to Hansgrohe products which are purchased by a consumer in the United States after March 1, 1996 and installed in either the United States or Canada.

WHO IS COVERED BY THE WARRANTY

This warranty extends to the original consumer purchaser only.

WHAT IS COVERED BY THE WARRANTY

This warranty covers only your Hansgrohe manufactured product. Hansgrohe warrants this product against defects in material or workmanship as follows: Hansgrohe will repair at no charge for parts only or, at its option, replace any product or part of the product which proves defective because of improper workmanship and/or material, under normal installation, use, service and maintenance. If Hansgrohe is unable to provide a replacement and repair is not practical or cannot be timely made, Hansgrohe may elect to refund the purchase price in exchange for the return of the product.

LENGTH OF WARRANTY

Replacement or repaired parts of products will be covered for the term of this warranty as stated in the following two sentences. If you are a consumer who purchased the product for use primarily for personal, family, or household purposes, this warranty extends for as long as you own the product and the home in which the product is installed. If you purchased the product for use primarily for any other purpose, including, without limitation, a commercial purpose, this warranty extends only (i) for 1 year, with respect to Interaktiv and Retroaktiv products and (ii) for 5 years, with respect to AXOR, ShowerPower and Pharo products.

THIS WARRANTY DOES NOT COVER and HANSGROHE WILL NOT PAY FOR:

- A. Conditions, malfunctions or damage not resulting from defects in material or workmanship.
- B. Conditions, malfunctions or damage resulting from (1) improper installation, improper maintenance, misuse, abuse, negligence, accident or alteration, or (2) the use of abrasive or caustic cleaning agents or "no rinse" cleaning products, or the use of the product in any manner contrary to the product instructions.
- C. Labor or other expenses for the disconnection or return of the product for warranty service, or for installation or reinstallation of the product.
- D. Accessories or related products not manufactured by Hansgrohe.

TO OBTAIN WARRANTY SERVICE

Contact your Hansgrohe retailer, or write to Technical Service at:

Hansgrohe Inc.
1492 Bluegrass Lakes Parkway
Alpharetta GA 30004

Or, call Hansgrohe toll-free at (800) 334-0455.

In requesting warranty service, you will need to provide

- 1. The sales receipt or other evidence of the date and place of purchase.
- 2. A description of the problem.
- 3. Delivery of the product or the defective part, postage prepaid and carefully packed and insured, to Hansgrohe Inc. 1492 Bluegrass Lakes Parkway, Alpharetta, Georgia 30004, Attention: Technical Service, if required by Hansgrohe.

When warranty service is completed, any repaired or replacement product or part will be returned to you postage prepaid.

EXCLUSIONS AND LIMITATIONS

REPAIR OR REPLACEMENT (OR, IN LIMITED CIRCUMSTANCES, REFUND OF THE PURCHASE PRICE) AS PROVIDED UNDER THIS WARRANTY IS THE EXCLUSIVE REMEDY OF THE PURCHASER. HANSGROHE NEITHER ASSUMES NOR AUTHORIZES ANY PERSON TO CREATE FOR IT ANY OBLIGATION OR LIABILITY IN CONNECTION WITH THIS PRODUCT.

HANSGROHE SHALL NOT BE LIABLE TO PURCHASER OR ANY PERSON FOR ANY INCIDENTAL, SPECIAL, OR CONSEQUENTIAL DAMAGES, ARISING OUT OF BREACH OF THIS WARRANTY OR ANY IMPLIED WARRANTY (INCLUDING MERCHANTABILITY).

Some States do not allow the exclusion or limitation of incidental or consequential damages, so the above limitation or exclusion may not apply to you.

This warranty gives you specific legal rights and you may have other rights which vary from State to State.

You may be required by law to give us a reasonable opportunity to correct or cure any failure to comply before you can bring any action in court against us under the Magnuson-Moss Warranty Act.

PRODUCT INSTRUCTIONS AND QUESTIONS

Upon purchase or prior to installation, please carefully inspect your Hansgrohe product for any damage or visible defect. Prior to installing, always carefully study the enclosed instructions on the proper installation and the care and maintenance of the product. If you have questions at any time about the use, installation, or performance of your Hansgrohe product, or this warranty, please call or write to us at the toll-free number and address printed above.

hansgrohe

Hansgrohe, Inc. • 1490 Bluegrass Lakes Parkway • Alpharetta, GA 30004
Tel. 770 360-9880 • Fax 770 360 9887

www.hansgrohe-USA.com