

## FAUCET DESCRIPTION

- Metal construction with chrome plated, glacier, ivory, platinum or LifeShine® stainless finish
- 1/2" IPS connections
- Lever style handles
- Handle inserts include hot (red) and cold (blue) color indicators
- Includes Protégé® side spray

## OPERATION

- Hot side counterclockwise to open (clockwise to close)
- Cold side clockwise to open (counterclockwise to close)

## FLOW

- Aerator is limited to 2.2 gpm (8.3 L/min).

## CARTRIDGE

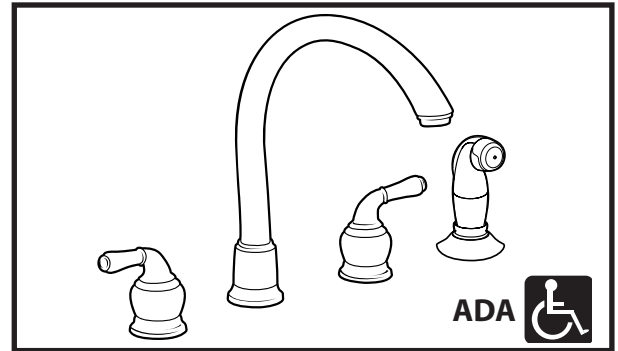
- 1224 cartridge design
- Nonmetallic, nonferrous and stainless steel material

## STANDARDS

- Designed and manufactured to comply with the requirements of: CSA B-125, ASME A112.18.1M, and all applicable requirements referenced therein and complies with the applicable requirements of ANSI A117.1.
- Certified to ANSI/NSF 61/9
- Complies with California Proposition 65 and with the Federal Safe Water Drinking Act

## WARRANTY

- Lifetime limited warranty against leaks, drips and finish defects to the original consumer purchaser
- 5 year warranty if used in commercial installations

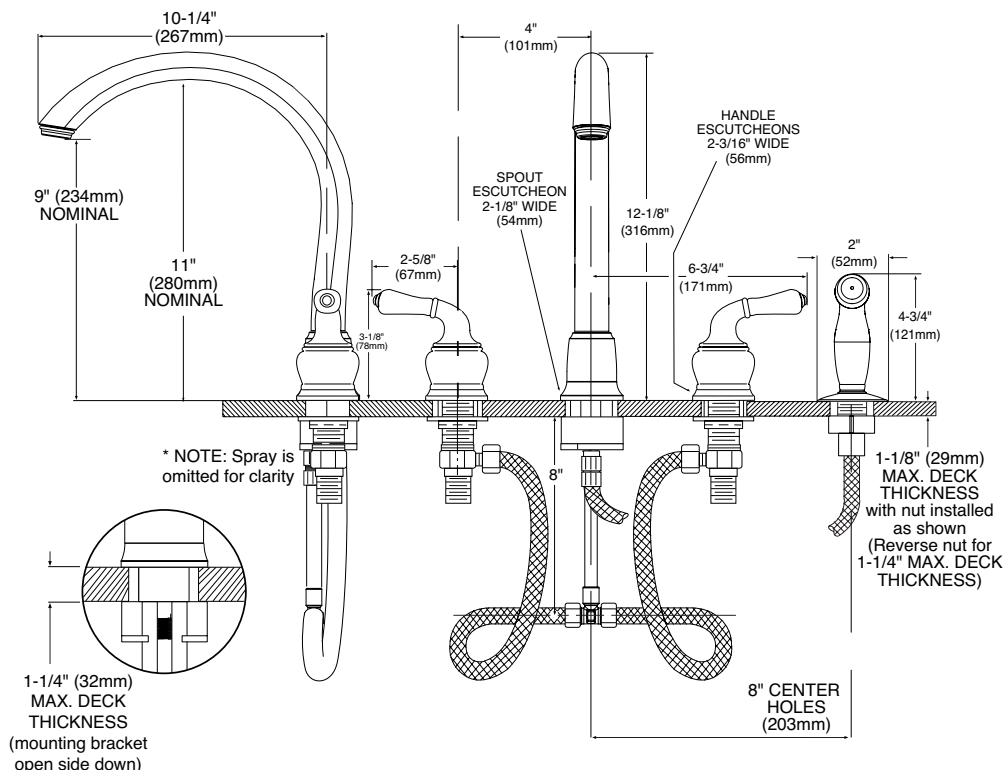


### Monticello® with Cathedral™ Spout Two Handle Kitchen Faucet with Protégé Side Spray

(less handle inserts on 7000 series,  
handle inserts included on 80000 series)

**Models:** 7786, 7786PM, 7786SL,  
7786W, 7786V,  
87786, 87786SL

Spout installs through deck holes a minimum of  
1-1/4" (32mm) in diameter. Valves install through  
1-1/8" (28mm) min. diameter hole.



## CRITICAL DIMENSIONS

(DO NOT SCALE)