

Installation Guide

Two-Handle Bath/Shower Faucet

K-8253, K-8254, K-8256

1031377-2-A

THE BOLD LOOK
OF **KOHLER**®

Tools and Materials



Adjustable
Wrench



Assorted
Screwdrivers



Strap
Wrench



Drill



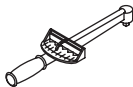
Tube Cutter



Propane
Torch



Hex
Wrench



Torque
Wrench



Solder



Thread
Sealant



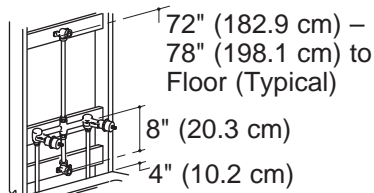
Plumbers
Putty

Thank You For Choosing Kohler Company

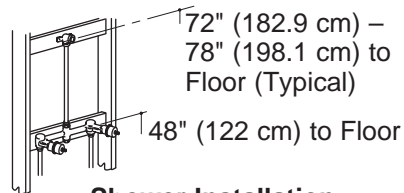
We appreciate your commitment to Kohler quality. Please take a few minutes to review this manual before you start installation. If you encounter any installation or performance problems, please don't hesitate to contact us. Our phone numbers and web site are listed on the back cover. Thanks again for choosing Kohler Company.

Before You Begin

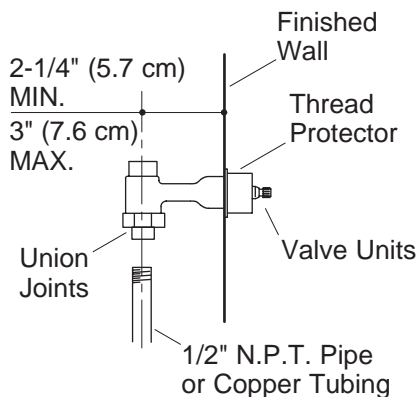
- Please read all instructions before you begin.
- Observe all local plumbing and building codes.
- Before installation, unpack the new faucet and inspect it for damage. Return the faucet to the carton until you are ready to install.
- Shut off the main water supply.
- Kohler Co. reserves the right to make revisions in the design of faucets without notice, as specified in the Price Book.



Bath/Shower Installation



Shower Installation

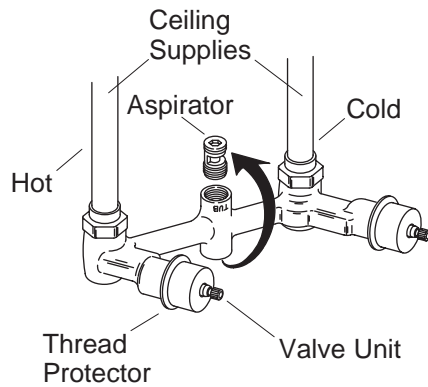


1. Install the Valve



CAUTION: Risk of product damage. Remove the thread protectors, valve units, and aspirator before applying heat to the yoke.

- Determine the location of the support framing for the yoke, spout, and the showerhead.
- Install the support framing as needed.
- The yoke has two union joints that can be used with either 1/2" N.P.T. pipe or copper tubing.
- Connect the hot and cold supplies to the yoke. They should be 2-1/4" (5.7 cm) minimum and 3" (7.6 cm) maximum from the finished wall.
- Reinstall everything that was removed before soldering.



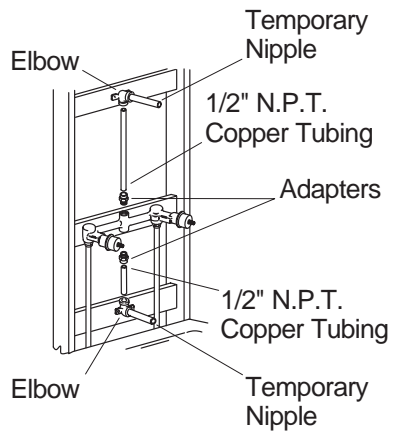
2. Install the Valve - Ceiling Installations

NOTE: This section applies to ceiling installations only.

- Remove the aspirator with a 3/8" hex wrench.
- Turn the yoke over so that the supplies connect from the top of yoke.
- Reinstall the aspirator at the top of yoke. Do not overtighten.

NOTE: Reversing the yoke will reverse the direction the lever handles close. For proper lever handle operation, reverse the valve units.

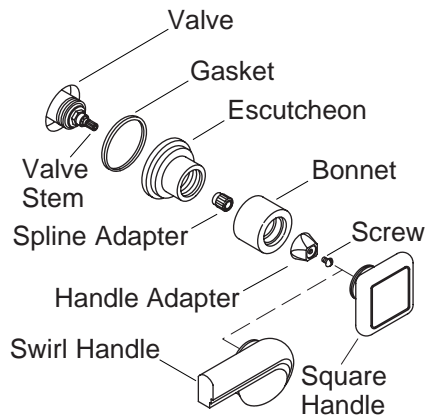
- Before removing the valves, make sure they are in the open position.
- Turn the hot valve counterclockwise and the cold valve clockwise. Remove the thread protectors and reverse the valves.
- Torque the valves to 23-30 ft. lbs. (31-40.6 Newton/m) and turn to the closed position.
- Replace the thread protectors.



3. Complete the Valve Installation

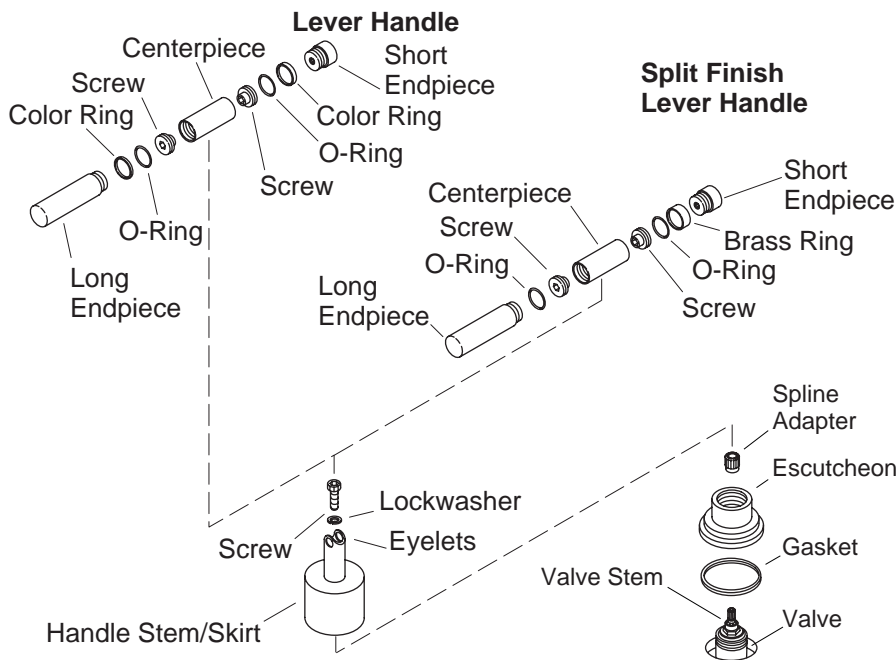
NOTE: This section applies to all valve installation styles.

- Plumb using 1/2" N.P.T. copper tubing, elbows, and adapters.
- Use thread sealant on all threaded connections.
- Secure the bath and shower piping to the support framing and install temporary nipples.
- Make sure the valves are closed.
- Turn on the main water supply.
- Turn on the water to flush debris from valve and check for leaks.
- Turn off water.
- Complete the finished wall.



4. Install Square and Swirl Handles

- Discard the thread protectors and install a gasket on the bottom of the escutcheon.
- Turn the escutcheon clockwise onto the valve until it contacts the finished wall.
- Place the spline adapter onto valve stem.
- Place the bonnet over the valve.
- Place the handle adapter onto the spline adapter. Align the side so it is parallel with the faucet body. This can be done by careful adjustment of the spline adapter and handle adapter.
- Secure the handle adapter with the screw.
- Position the handle onto the handle adapter and thread the bonnet onto the handle threads until tight.

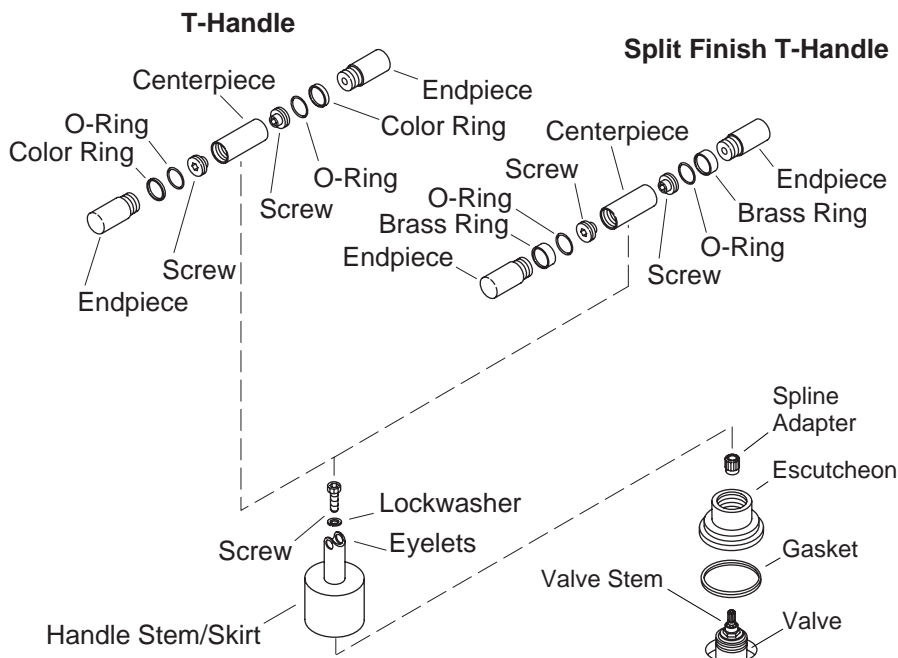


5. Install Lever Handles

- ❑ Discard the thread protectors and install the gasket on the bottom of the escutcheon.
- ❑ Turn the escutcheon clockwise onto the valve until it contacts the finished wall.
- ❑ Place the spline adapter onto the valve stem.
- ❑ Place the handle stem/skirt over the valve and fasten it to the valve stem using the provided lockwasher and screw. Make sure to align the eyelets in the handle stem/skirt so they point to the other handle.
- ❑ Tighten using a 5/32" hex key.
- ❑ Place the centerpiece onto the handle stem/skirt so that the eyelet holes are clearly visible.
- ❑ Fasten the centerpiece in place by inserting two screws (flat surface facing out). Place one screw into each end of the centerpiece and tighten using a 5/32" hex key.
- ❑ Slip each color ring over the endpiece threads and onto the shoulder of each endpiece.

Install Lever Handles (cont.)

- Slip O-rings over the endpiece threads and onto the shoulder of each endpiece.
- Screw the endpieces into the centerpiece until tight. Short endpieces should be situated on the inside of the lever.

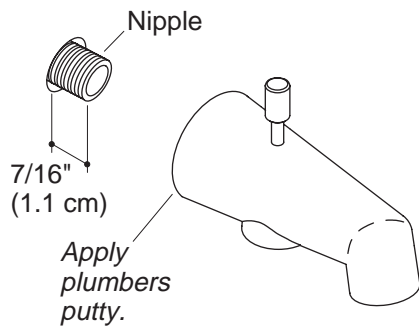


6. Install "T" Handles

- ❑ Discard the thread protectors and install the gasket on the bottom of the escutcheon.
- ❑ Turn the escutcheon clockwise onto the valve until it contacts the finished wall.
- ❑ Place the spline adapter onto the valve stem.
- ❑ Place the handle stem/skirt over the valve and fasten it to the valve stem using the provided lockwasher and screw. Make sure to align the eyelets in the handle stem/skirt so they point to other handle.
- ❑ Tighten using a 5/32" hex key.
- ❑ Place the centerpiece onto the handle stem/skirt situated with the eyelet holes clearly visible.
- ❑ Fasten the centerpiece in place by inserting two screws (flat surface facing out). Place one screw into each end of the centerpiece and tighten using the 5/32" hex key.
- ❑ Slip each color ring over the endpiece threads and onto the shoulder of each endpiece.

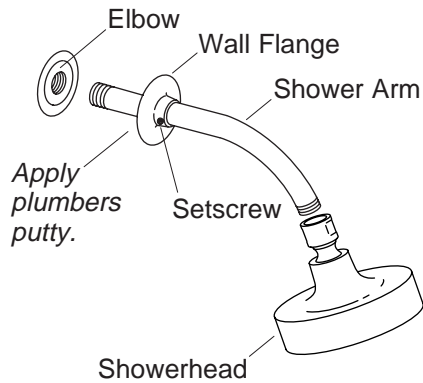
Install "T" Handles (cont.)

- Slip O-rings over the endpiece threads and onto shoulder of each endpiece.
- Screw the endpieces into the centerpiece until tight.



7. Install the Spout

- Remove the temporary nipple.
- Install a 1/2" N.P.T. nipple to extend 7/16" (1.1cm) beyond the finished wall.
- Apply thread sealant to the nipple threads.
- Apply a bead of plumbers putty or other sealant around the inlet of the spout according to the putty manufacturer's instructions.
- Carefully tighten the spout with a clean strap wrench.
- Remove all excess putty.



8. Install the Showerhead

⚠ CAUTION: Risk of product damage. To avoid plugging the showerhead spray outlets, use thread sealant tape on the shower arm threads. Do not use thread sealant compound (pipe dope).

- Remove the temporary nipple.
- Loosen the setscrew and apply a bead of plumbers putty or other sealant around the wall flange according to putty manufacturer's instructions.
- Slip the wall flange over the shower arm.
- Place thread sealant on the shower arm threads and thread the shower arm into the elbow.
- Tighten with a clean strap wrench.
- Flush out the system with the showerhead removed. Apply thread sealant to the threads, and thread the showerhead onto the shower arm.
- Apply thread sealant to the threads, and thread the showerhead onto the shower arm.
- Press the wall flange tight against the wall and secure with the setscrew.

9. Complete the Installation

- Open the hot and cold valves and check for leaks.
- Run the water for about a minute.

Complete the Installation (cont.)

- Turn the hot and cold water valves off.

1031377-2-A

1031377-2-A

USA:1-800-4-KOHLER

kohler.com

THE BOLD LOOK
OF **KOHLER**®

©2004 Kohler Co.

1031377-2-A