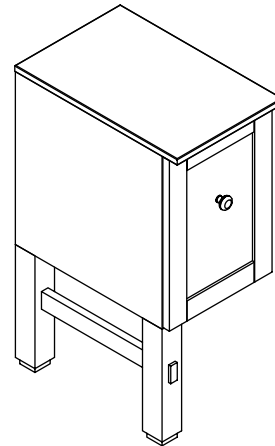




## Features

- Ash solids and veneers
- Easy glide drawer
- 12-1/8" (308 mm) x 18-11/16" (475 mm) x 29-3/4" (756 mm)

## VANITY BRIDGE WITH MARBLE TOP K-2607



## Codes/Standards Applicable

Specified model meets or exceeds the following:

- ANSI/KCMA A 161.1
- ATCM Sec. 93120-93120.12, Title 17, CA. Code of Regulations
- CARB P2

## Colors/Finishes

- F69: Woodland

## Accessories

- F69: Woodland

## Specified Model

Model	Description	Colors/Finishes
K-2607	Vanity bridge with marble top	<input type="checkbox"/> F69
<b>Recommended Accessories</b>		
K-2604	Vanity – 23-3/4" (603 mm)	<input type="checkbox"/> F69
K-2684	Tall storage	<input type="checkbox"/> F69

## Product Specification

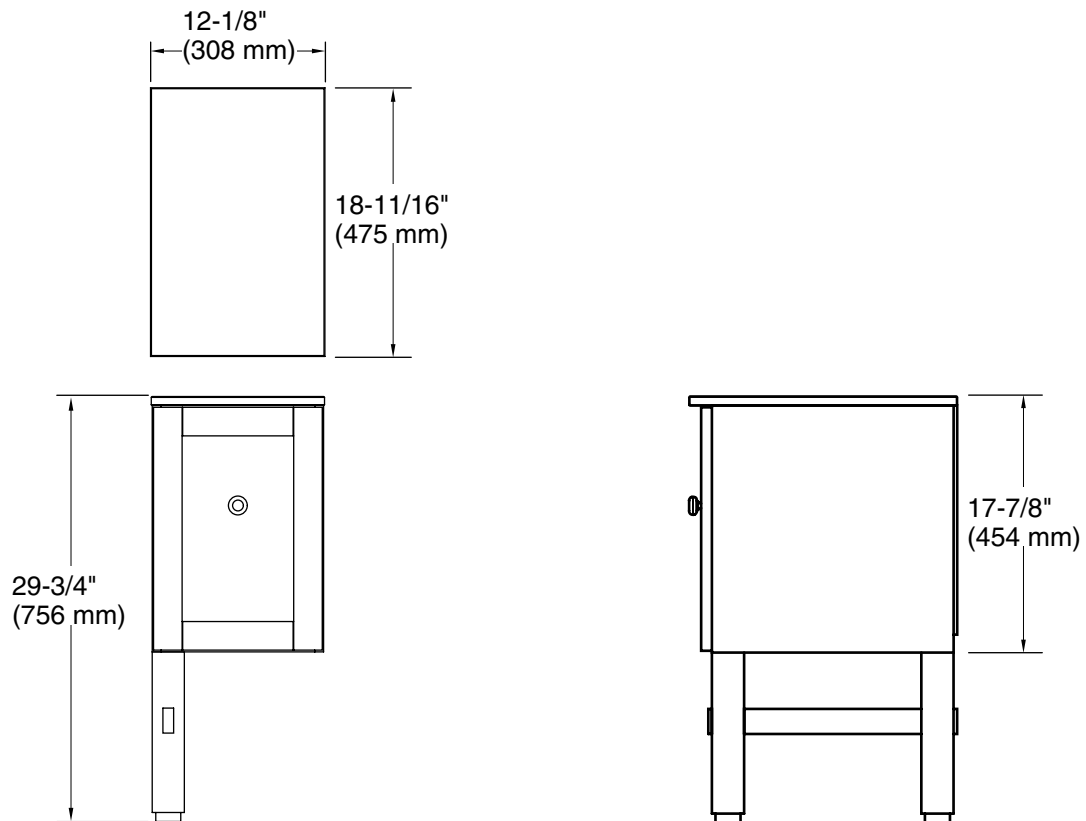
The vanity bridge shall be 12-1/8" (308 mm) in width, 18-11/16" (475 mm) in depth, and 29-3/4" (756 mm) in height. Vanity bridge shall be made of ash solids and veneers. Vanity bridge shall have easy glide drawer. Vanity bridge shall be Kohler Model K-2607-\_\_\_\_\_.

## Installation Notes

Install this product according to the installation guide.

Decorative cabinet hardware is supplied. Refer to the Kohler bath accessories line for additional decorative cabinet hardware to complement your vanity bridge.

Select the type of fastener based on the wall material. A minimum 500 lb (227 kg) load bearing fastener is recommended.



**Product Diagram**