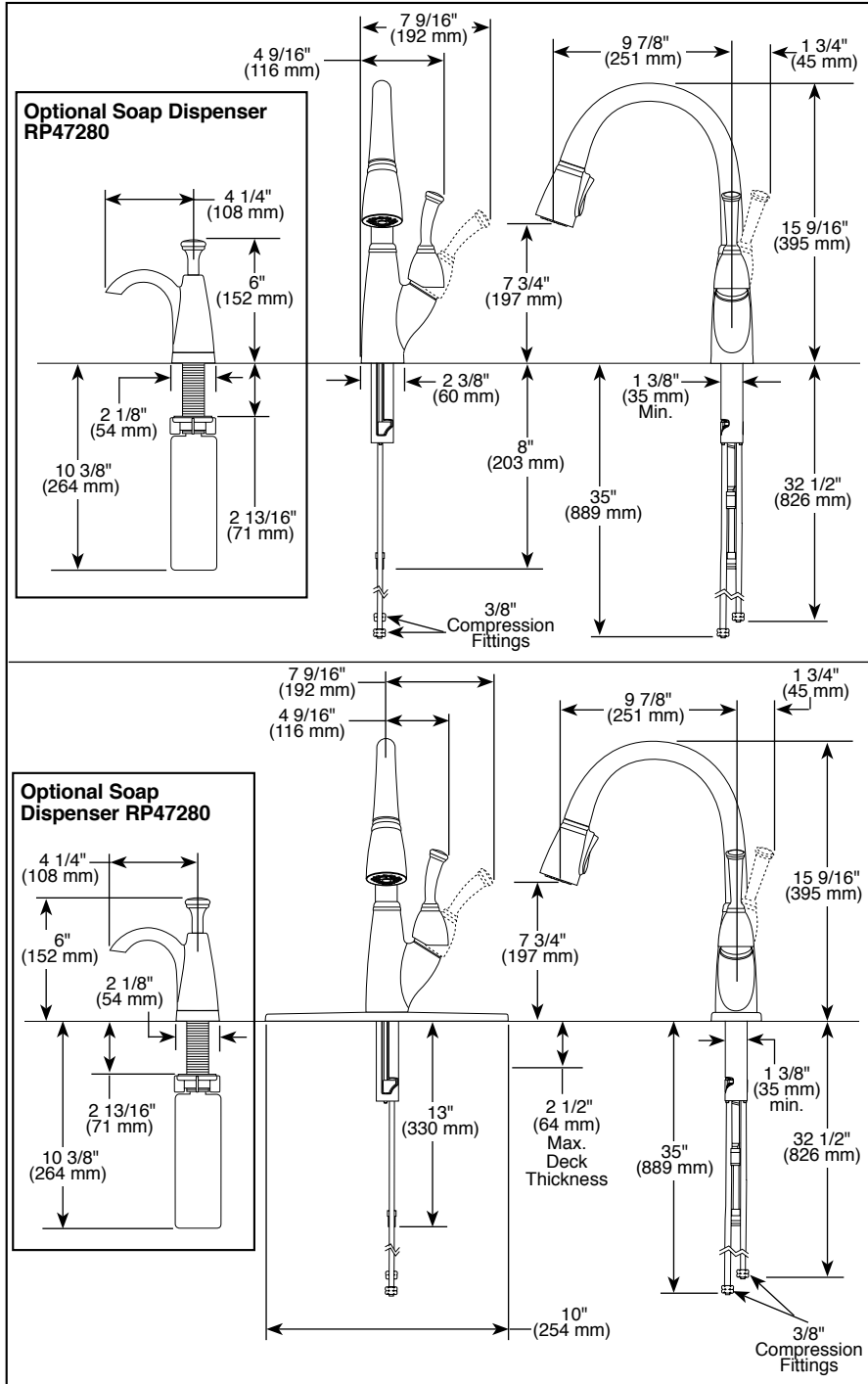


Submitted Model No.: \_\_\_\_\_  
 Specific Features: \_\_\_\_\_



## KITCHEN FAUCETS

- Allora® Pull-Down Collection
- Single Handle Deck Mount
- Single, 2, 3 or 4 Hole Sink Applications
- EZ Anchor™ Top Down Mounting
- Optional Soap Dispenser
- Diamond™ Seal Technology
- Integrated Supply Tubes
- 2-Function Pull-Down
- MagnaTite™ Docking System

### STANDARD SPECIFICATIONS:

- EZ Anchor™ top down mounting.
- EZ Bar included to assist during installation.
- Centermount or 8" (203 mm) centers with optional 10" (254 mm) escutcheon.
- 15 9/16" (395 mm) high, 9 7/8" (251 mm) long, spout swings 360°.
- Lever handle. Control mechanism is the diamond embedded ceramic disc cartridge.
- Control shall return to neutral position when faucet is turned off.
- Touch-Clean® 2 function (stream/spray) sprayhead.
- Quick connect hoses.
- Pull-down wand operates in an aerated or spray mode via an ergonomic toggle diverter.
- Red/blue graphics on handle button to indicate hot/cold temperature.
- Magnetic docking system secures sprayer to spout.
- Integral double check valves in sprayer assembly.
- Integrated removable debris screen in sprayer assembly.
- Integral hose lead to aid installation.
- Hose travels inside mounting shank so it will not interfere with deck edges.
- 3/8" O.D. straight, staggered PEX supply tubes, 32 1/2" (826 mm) and 35" (889 mm).
- RP61607 clip available with flow rate of 1.5 gpm max. @ 60 PSI.

**Note:** See model 999\* for matching bar/prep.

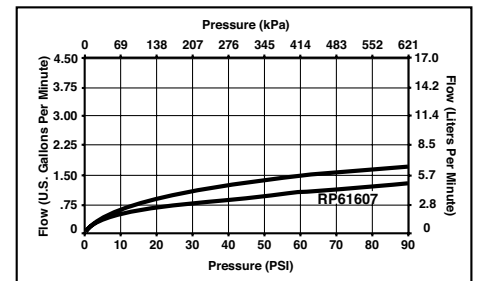
### WARRANTY

- Lifetime Faucet and Finish Limited Warranty to the original consumer purchaser to be free from defects in material and workmanship.
- 5 Year Limited Warranty for usage in all industrial, commercial and business applications.



### COMPLIES WITH:

- ASME A112.18.1 / CSA B125.1
- Indicates compliance to ICC/ANSI A17.1



Delta reserves the right (1) to make changes in specifications and materials, and (2) to change or discontinue models, both without notice or obligation. Dimensions are for reference only. See current full-line price book or [www.specselect.com](http://www.specselect.com) for finish options and product availability.